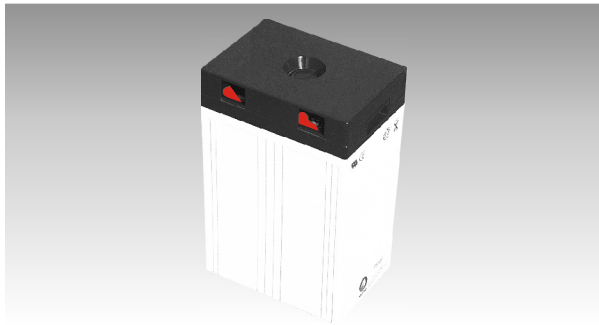
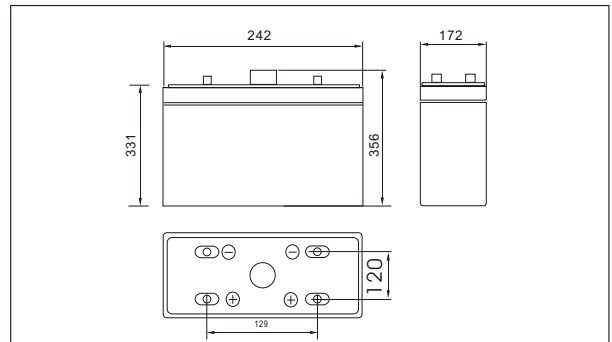




## SW25000(2V500AH)



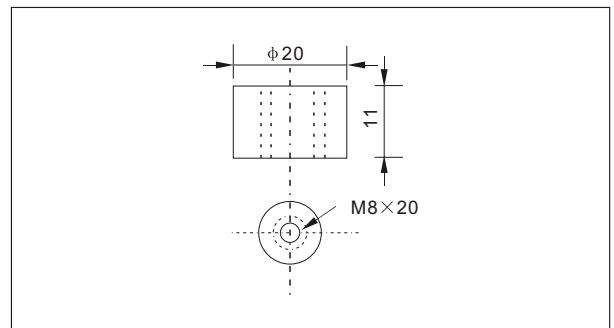
### Outer dimensions (mm)



### Specifications

|                               |                  |                      |
|-------------------------------|------------------|----------------------|
| Nominal Voltage               | 2 V              |                      |
| Rated capacity (10 hour rate) | 500 Ah           |                      |
| Dimensions                    | Total Height     | 356 mm (14.0 inches) |
|                               | Height           | 331 mm (13.0 inches) |
|                               | Length           | 242 mm (9.5 inches)  |
|                               | Width            | 172 mm (6.8 inches)  |
| Weight Approx                 | 32.3 Kg (71 lbs) |                      |

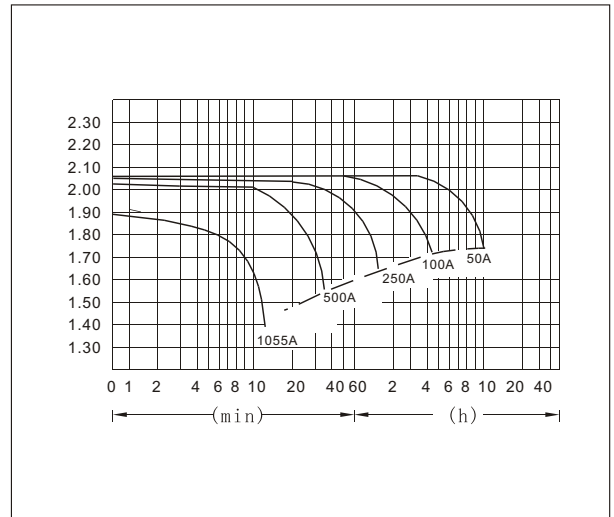
### Terminal Type (mm)



### Characteristics

|  |                                    |  |
|--|------------------------------------|--|
| Capacity<br>25°C(77°F)                         | 10 hour rate(50 A)                 | 500 AH   |
|  | 5 hour rate(80 A)                  | 400 AH   |
|  | 1 hour rate(300 A)                 | 300 AH   |
| Internal Resistance                            | Full charged Battery at 25°C(77°F) | Approx 0.38 mΩ   |
| Capacity affected by Temperature (10hour rate) | 40°C(104°F)                        | 102%   |
|  | 25°C(77°F)                         | 100%   |
|  | 0°C(32°F)                          | 85%  |
|  | -15°C(5°F)                         | 65%  |
| Self-Discharge at 25°C(77°F)                   | Capacity after 3 month storage     | 91%  |
|  | Capacity after 6 month storage     | 82%  |
|  | Capacity after 12 month storage    | 64%  |
| Terminal                                       | T20                                |  |
| Charge (constant Voltage)                      | Cycle                              | Initial Charging Current less than 200 A<br>Voltage 2.35-2.40V |
|  | Float                              | Voltage 2.25-2.30V   |

### Discharge Curves 25°C(77°F)



### Constant Current(Amp) and Constant Power(Watt) Discharge Table at 25°C(77°F)

| Time  | 5min | 10min | 15min | 30min | 1h   | 2h  | 3h    | 4h    | 5h    | 8h    | 10h   | 20h  |
|-------|------|-------|-------|-------|------|-----|-------|-------|-------|-------|-------|------|
| 1.60V | A    | 1602  | 1055  | 851   | 570  | 300 | 175.0 | 128.5 | 100.0 | 82.5  | 58.5  | 28   |
|       | W    | 2755  | 1878  | 1520  | 1021 | 540 | 320   | 238.4 | 187.5 | 156.3 | 111.7 | 55   |
| 1.70V | A    | 1551  | 952   | 801   | 545  | 282 | 167.0 | 125.0 | 97.5  | 81.0  | 57.0  | 27.5 |
|       | W    | 2761  | 1772  | 1494  | 1020 | 532 | 321   | 241.3 | 189.0 | 157.4 | 111.2 | 53.8 |
| 1.75V | A    | 1501  | 852   | 701   | 510  | 273 | 163.0 | 122.0 | 96.0  | 80.0  | 56.5  | 27.5 |
|       | W    | 2731  | 1614  | 1332  | 978  | 527 | 315   | 236.9 | 187.2 | 156.3 | 110.7 | 54.2 |
| 1.80V | A    | 1446  | 803   | 651   | 470  | 264 | 159.0 | 119.0 | 94.5  | 78.0  | 55.0  | 27.0 |
|       | W    | 2704  | 1542  | 1250  | 908  | 512 | 310   | 233.8 | 186.0 | 153.7 | 108.6 | 53.6 |
| 1.85V | A    | 1398  | 752   | 601   | 420  | 255 | 155.0 | 115.0 | 92.0  | 76.0  | 53.5  | 25.5 |
|       | W    | 2641  | 1451  | 1166  | 819  | 500 | 305   | 227.7 | 182.6 | 151.2 | 106.8 | 51.5 |