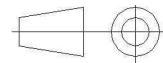
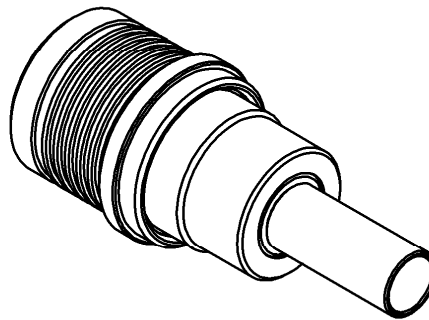
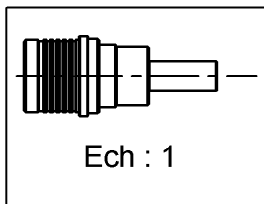
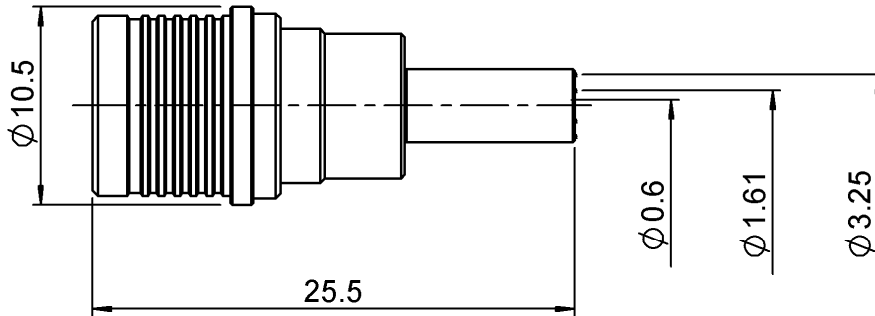


STRAIGHT PLUG FULL CRIMP

R123.071.000

CABLE 2.6/50 S

Series : QMA



All dimensions are in mm.

| COMPONENTS | MATERIALS | PLATINGS (µm) |
|----------------|-----------|---------------|
| BODY | BRASS | BBR 2 |
| CENTER CONTACT | BRASS | NPGR |
| OUTER CONTACT | BRASS | BBR 2 |
| INSULATOR | PTFE | |
| GASKET | - | |
| OTHERS PARTS | BRASS | BBR 2 |
| - | - | - |
| - | - | - |

Issue : 0923 F

In the effort to improve our products, we reserve the right to make changes judged to be necessary.



RADIALL®

STRAIGHT PLUG FULL CRIMP

R123.071.000

CABLE 2.6/50 S

Series : QMA

PACKAGING

| Standard | Unit | Other |
|------------|-------------------|-------------------|
| 100 | 'W' option | Contact us |

SPECIFICATION

ELECTRICAL CHARACTERISTICS

| | | |
|---------------------------------|-----------------|--------------------------|
| Impedance | 50 | Ω |
| Frequency | 0-6 | GHz |
| VSWR | + 0,0000 | x F(GHz) Maxi |
| Insertion loss | .05 | \sqrt{F} (GHz) dB Maxi |
| RF leakage | - (80) | - F(GHz)) dB Maxi |
| Voltage rating | 250 | Veff Maxi |
| Dielectric withstanding voltage | 750 | Veff mini |
| Insulation resistance | 5000 | M Ω mini |

CABLE ASSEMBLY

| Stripping | a | b | c | d | e | f |
|-----------|------|------|------|------|------|------|
| mm | 3,00 | 6,30 | 10,8 | 0,00 | 7,80 | 0,00 |

Assembly instruction : **Crimp 02**

Recommended cable(s)

RG 188
RG 316
KX 22A

Characteristics indicated on this data sheet are those that can be achieved with the highest performance cable. Intrinsic limitations of the cable may diminish the performance of the assembly

Cable retention

- pull off **90** N mini
- torque **NA** N.cm

MECHANICAL CHARACTERISTICS

| | | |
|----------------------------|-----------|-----------|
| Center contact retention | | |
| Axial force – Mating end | 18 | N mini |
| Axial force – Opposite end | 18 | N mini |
| Torque | NA | N.cm mini |

TOOLING

| Part Number | Description | Hexagon |
|--------------|---------------------------------|------------------|
| . | . | . |
| R282.211.000 | CRIMPING TOOL | 3.25 |
| R282.235.003 | CRIMPING DIES M22520/5-03 | 3.25 |
| R282.281.000 | CRIMPING TOOL | 2x4 (pos. 5) |
| R282.293.000 | CRIMPING TOOL M22520/5-01 | |
| R282.967.015 | POSITIONER FOR CRIMPING TOOL | |
| R299.511.016 | STRIPPING CASSETTE .059/.248 | denudage B, E |

| | | |
|--------------------|---------------|------|
| Recommended torque | | |
| Mating | NA | N.cm |
| Panel nut | NA | N.cm |
| Clamp nut | NA | N.cm |
| A/F clamp nut | 0,0000 | mm |

| | | |
|-------------|---------------|-------------|
| Mating life | 100 | Cycles mini |
| Weight | 5,7800 | g |

ENVIRONMENTAL

| | | |
|-----------------------|-----------------|--------------|
| Operating temperature | -40/+105 | $^{\circ}$ C |
| Hermetic seal | NA | Atm.cm3/s |
| Panel leakage | NA | |

OTHERS CHARACTERISTICS

VSWR : 1.12 max from 0 to 3GHz
Intermod.: -120 dBc at 1.8GHz (2x20W)
RF leakage(interf.): 3<F<6GHz: >70dB

Issue : 0923 F

In the effort to improve our products, we reserve the right to make changes judged to be necessary.

