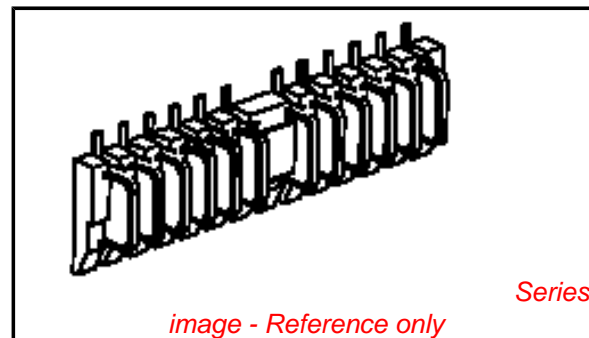


**PLEASE CHECK WWW.MOLEX.COM FOR LATEST PART INFORMATION**

**Part Number:** [0876021191](#)  
**Status:** **Active**  
**Description:** 2.50mm(.098") Pitch Panel Detachable Connector, PCB Header, Vertical, 12 Circuits, 0.5µm (20µ") Gold (Au) Selective Plating, with Locating Pegs, Tube Packaging, Lead-free

**Documents:**

[Drawing \(PDF\)](#) [RoHS Certificate of Compliance \(PDF\)](#)  
[Product Specification PS-87601-001 \(PDF\)](#)



**General**

Product Family	PCB Headers
Series	<a href="#">87602</a>
Application	Board-to-Board
Comments	Panel Detachable
Product Name	N/A

**Physical**

Breakaway	No
Circuits (Loaded)	12
Circuits (maximum)	12
Durability (mating cycles max)	10,000
First Mate / Last Break	No
Glow-Wire Compliant	No
Guide to Mating Part	No
Keying to Mating Part	None
Lock to Mating Part	None
Mated Height (in)	0.594 In
Mated Height (mm)	15.09 mm
Material - Plating Mating	Gold
Material - Plating Termination	Tin
Number of Rows	1
Orientation	Vertical
PCB Retention	None
PCB Thickness Recommended (in)	0.062 In
PCB Thickness Recommended (mm)	1.60 mm
Packaging Type	Tube
Pitch - Mating Interface (in)	0.098 In
Pitch - Mating Interface (mm)	2.50 mm
Polarized to Mating Part	Yes
Polarized to PCB	Yes
Shrouded	No
Stackable	No
Temperature Range - Operating	-40°C to +85°C
Termination Interface: Style	Surface Mount

**Electrical**

Current - Maximum per Contact	1A
Voltage - Maximum	125V

**Material Info**

**Reference - Drawing Numbers**

Product Specification	PS-87601-001
Sales Drawing	SD-87602-011

**EU RoHS**

**ELV and RoHS Compliant**  
**REACH SVHC**  
**Contains SVHC: No**  
**Halogen-Free**  
**Status**  
**Not Reviewed**

**China RoHS**



**Need more information on product environmental compliance?**

Email [productcompliance@molex.com](mailto:productcompliance@molex.com)  
 For a multiple part number RoHS Certificate of Compliance, [click here](#)

Please visit the [Contact Us](#) section for any non-product compliance questions.

**Search Parts in this Series**

[87602Series](#)

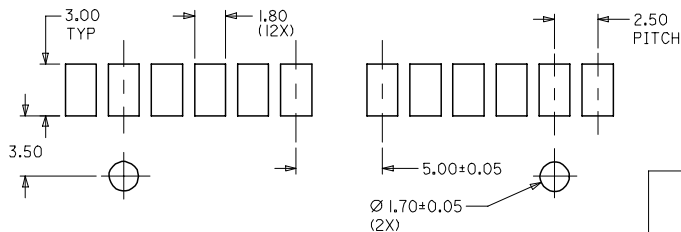
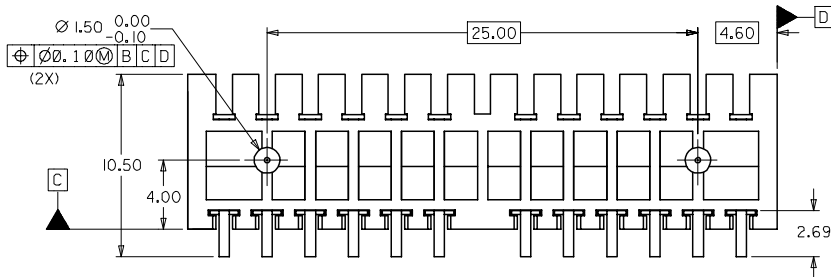
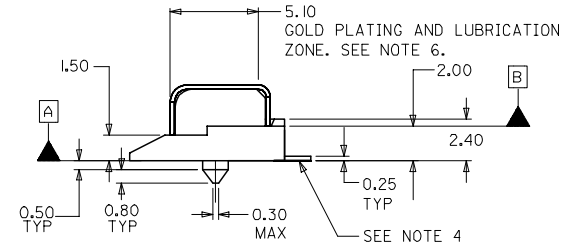
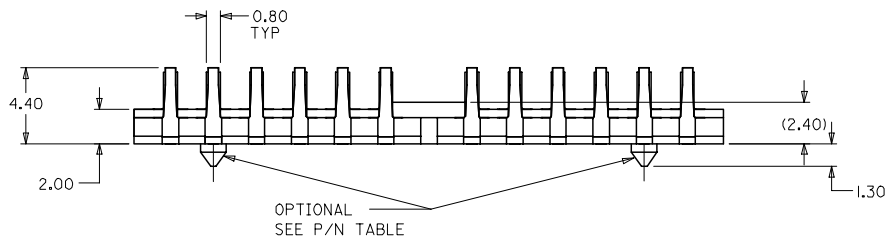
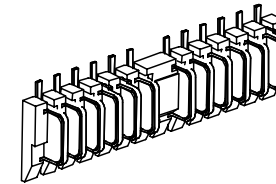
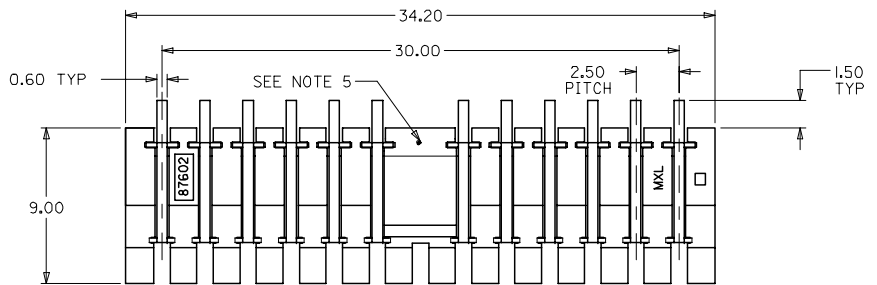
**Mates With**

[87601 PCB Receptacle](#)

This document was generated on 04/19/2010

**PLEASE CHECK [WWW.MOLEX.COM](http://WWW.MOLEX.COM) FOR LATEST PART INFORMATION**

LEAD-FREE



RECOMMENDED PCB LAYOUT  
PCB THICKNESS = 1.60 ± 0.20 MM

NOTES:

- MATERIALS : HOUSING - NYLON, GLASS-FILLED, UL 94V-0 OR EQUIVALENT, COLOUR : BLACK  
TERMINAL - COPPER ALLOY  
COVER - NYLON, GLASS-FILLED, UL 94V-0, COLOUR : NATURAL
- FINISHES : SELECTIVE GOLD (Au) IN THE CONTACT AREA:  
THICKNESS=0.5 MICROMETER MINIMUM;  
SELECTIVE TIN (Sn) ALLOY IN THE PC TAIL AREA:  
THICKNESS= 5.0 MICROMETER MINIMUM;  
NICKEL (Ni) OVERALL
- PRODUCT SPECIFICATIONS : PS-87601-010
- COPLANARITY OF THE SOLDER TAILS TO BE CONTROLLED AT 0.15 MAX WITH REFERENCE TO DATUM A.  
COPLANARITY OF SOLDER TAILS IS MEASURED BY RESTING THE PART ON A FLAT GAUGE SURFACE.
- MARKING FOR LUBRICATED PARTS.
- 3 LAYERS OF LUBRICANT TO BE APPLIED.
- RETENTION FORCE BETWEEN COVER AND CONNECTOR TO BE 350 gF MIN.
- CONTACT FACTORY ON DETAILS OF THIS PART NO.

EWR #973 EC NO: S2006-0871 DRWN:CGOH CHKD:BLW APPR:PTL/M	2006/02/24	DESCRIPTION
	2006/02/24	
	2006/02/24	
	2006/02/24	
A1	REV	

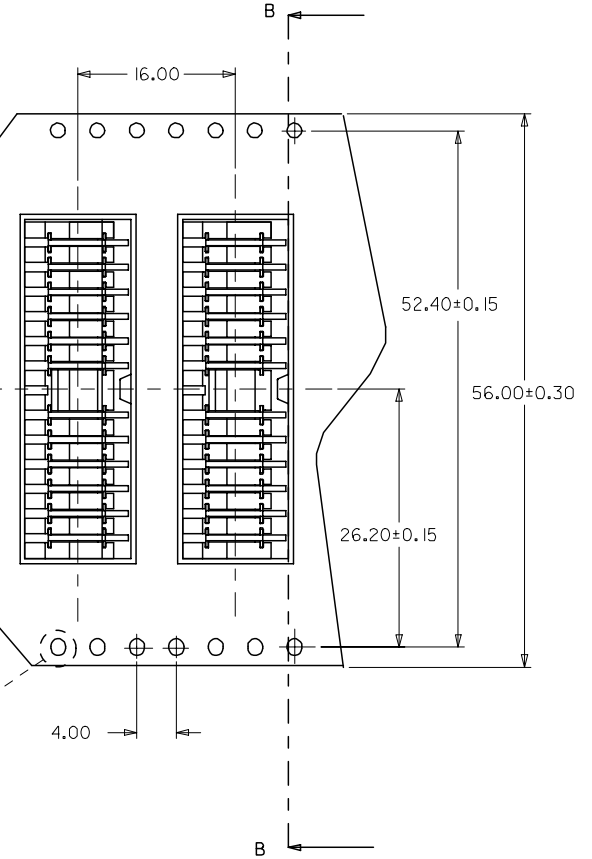
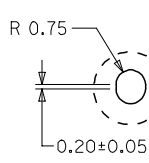
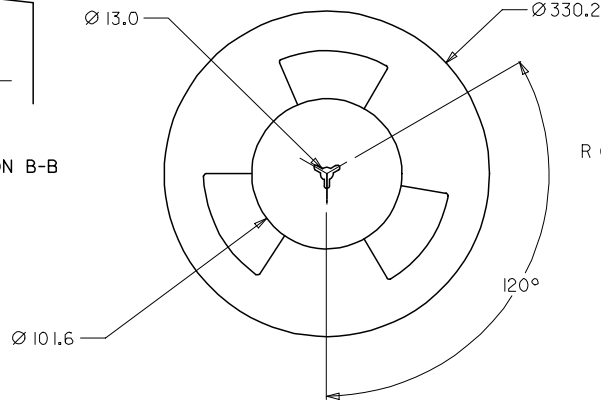
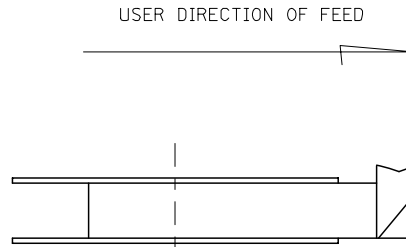
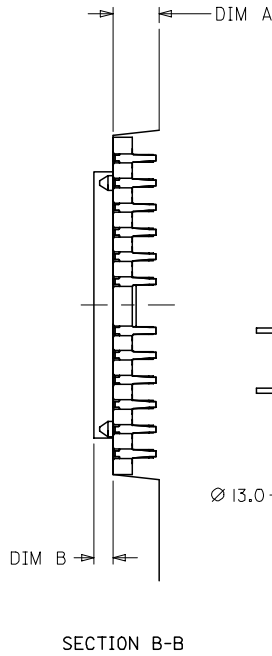
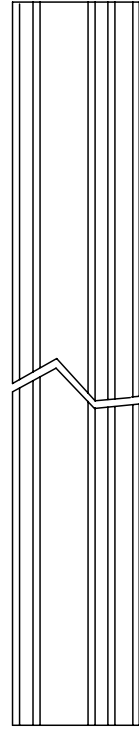
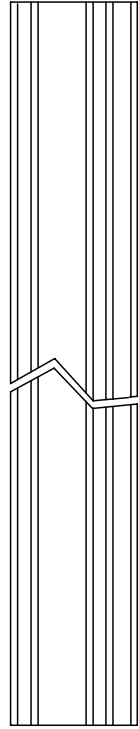
QUALITY SYMBOLS	▽=0
	▽=0

GENERAL TOLERANCES (UNLESS SPECIFIED)	
mm	INCH
4 PLACES ± ---	± ---
3 PLACES ± ---	± ---
2 PLACES ± 0.20	± ---
1 PLACE ± ---	± ---
ANGULAR ± 5 °	
DRAFT WHERE APPLICABLE MUST REMAIN WITHIN DIMENSIONS	

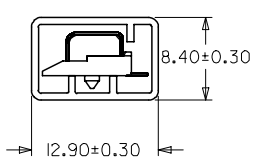
DIMENSION STYLE	
MM ONLY	
DRAWN BY	DATE
ATSEE	2004/06/07
CHECKED BY	DATE
SHONG	2004/06/15
APPROVED BY	DATE
KCLING	2004/06/15
MATERIAL NO.	SEE TABLE
SIZE	A3

SCALE	DESIGN UNITS	THIRD ANGLE PROJECTION
NTS	METRIC	
TITLE		
2.50MM PITCH, 12 CKTS DETACHABLE CONN. ( HDR )		
MOLEX MOLEX INCORPORATED		
DOCUMENT NO.	SHEET NO.	
SD-87602-011	1 OF 3	
THIS DRAWING CONTAINS INFORMATION THAT IS PROPRIETARY TO MOLEX INCORPORATED AND SHOULD NOT BE USED WITHOUT WRITTEN PERMISSION		

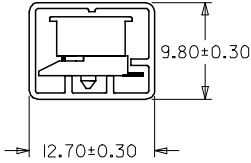
LEAD-FREE



DOUBLE SPROCKET HOLE T/REEL ( PER EIA STANDARD )  
ONLY PART NO : 87602-1101 SHOWN



PART NO : 87602-1191



PART NO : 87602-1291

EWR #973 EC NO: S2006-0871 DRWN:CGOH CHKD:BLW APPR:PTL:IM	2006/02/24	DESCRIPTION
	2006/02/24	
	2006/02/24	
	2006/02/24	
A1	REV	

QUALITY SYMBOLS	▽=0
	∇=0

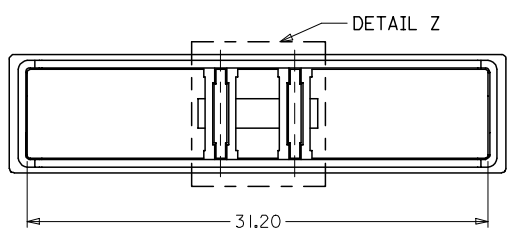
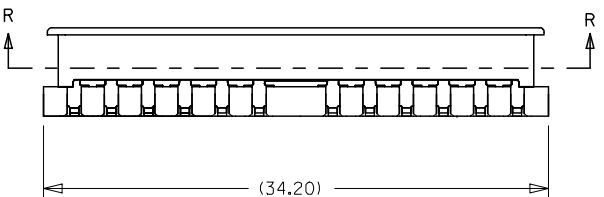
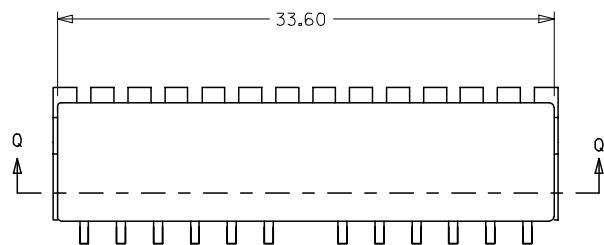
GENERAL TOLERANCES (UNLESS SPECIFIED)		
	mm	INCH
4 PLACES	± ---	± ---
3 PLACES	± ---	± ---
2 PLACES	± 0.2	± ---
1 PLACE	± ---	± ---
ANGULAR ± 5 °		
DRAFT WHERE APPLICABLE MUST REMAIN WITHIN DIMENSIONS		

DIMENSION STYLE MM ONLY	
DRAWN BY	DATE
ATSEE	2004/06/07
CHECKED BY	DATE
SHONG	2004/06/15
APPROVED BY	DATE
KCLING	2004/06/15
MATERIAL NO.	
SEE TABLE	
SIZE	A3

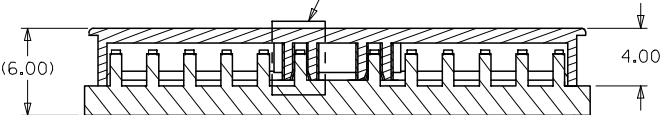
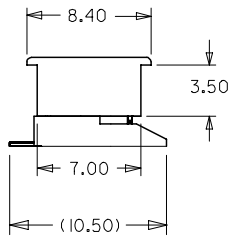
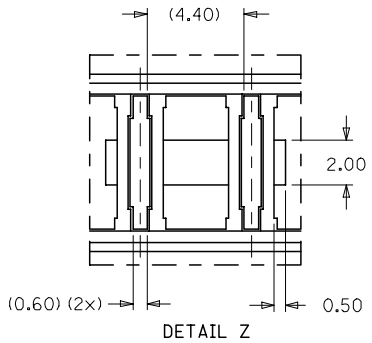
SCALE NTS	DESIGN UNITS METRIC	THIRD ANGLE PROJECTION
TITLE 2.50MM PITCH, 12 CKTS DETACHABLE CONN.( HDR )		
MOLEX INCORPORATED		
MATERIAL NO.	DOCUMENT NO. SD-87602-011	SHEET NO. 2 OF 3
THIS DRAWING CONTAINS INFORMATION THAT IS PROPRIETARY TO MOLEX INCORPORATED AND SHOULD NOT BE USED WITHOUT WRITTEN PERMISSION		

LEAD-FREE

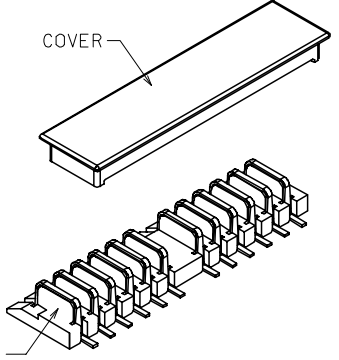
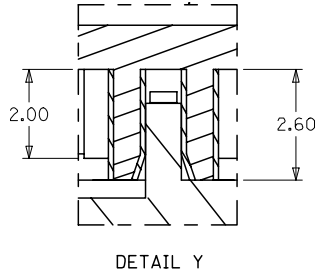
LUBRICATION AT CONTACT	PLASTIC PEG	MOLEX P/N WITHOUT CAP IN EMBOSSED TAPE PACKAGING			MOLEX P/N WITH CAP IN EMBOSSED TAPE PACKAGING			MOLEX P/N WITHOUT CAP IN TUBE PACKAGING	MOLEX P/N WITH CAP IN TUBE PACKAGING
			DIM A	DIM B		DIM A	DIM B		
NO	NO	87602-1001	4.70	1.90	SEE NOTE 8	N/A	N/A	87602-1091	SEE NOTE 8
YES	NO	87602-1002	4.70	1.90	SEE NOTE 8	N/A	N/A	87602-1092	SEE NOTE 8
NO	YES	87602-1101	4.70	1.90	87602-1201	6.80	1.60	87602-1191	87602-1291
YES	YES	87602-1102	4.70	1.90	87602-1202	6.80	1.60	87602-1192	87602-1292



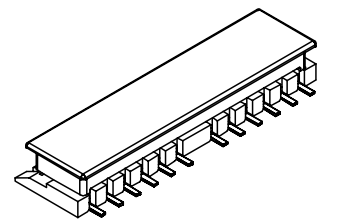
SECTION R-R (COVER ONLY)



SECTION Q-Q



P/N: 87602-1001  
12 CKTS DETACHABLE CONNECTOR (HEADER)



<b>EWR #973</b> EC NO: S2006-0871 DRWN: CGOH CHKD: BLOW APPR: PTLIM 2006/02/24 2006/02/24 2006/02/24	QUALITY SYMBOLS ▽=0 ▽=0	GENERAL TOLERANCES (UNLESS SPECIFIED) mm INCH 4 PLACES ± --- ± --- 3 PLACES ± --- ± --- 2 PLACES ± 0.20 ± --- 1 PLACE ± --- ± --- ANGULAR ± 5 °	DIMENSION STYLE MM ONLY DRAWN BY DATE ATSEE 2004/06/08 CHECKED BY DATE SHONG 2004/06/15 APPROVED BY DATE KCLING 2004/06/15	SCALE NTS DESIGN UNITS METRIC THIRD ANGLE PROJECTION	TITLE 2.50MM PITCH, 12 CKTS DETACHABLE CONN. (HDR)	
	MATERIAL NO. SEE TABLE	DOCUMENT NO. SD-87602-011	SHEET NO. 3 OF 3	MOLEX INCORPORATED		
	DRAFT WHERE APPLICABLE MUST REMAIN WITHIN DIMENSIONS			THIS DRAWING CONTAINS INFORMATION THAT IS PROPRIETARY TO MOLEX INCORPORATED AND SHOULD NOT BE USED WITHOUT WRITTEN PERMISSION		
	A1	REV				