

IEC Appliance Inlet C20, Snap-in Mounting, Front Side, Solder or Quick-connect Terminal



C20



70 °C



Description

- Panel Mount:
Snap-in, from front side
- Appliance Inlet, Pin temperature 70 °C, Protection class I
- Solder terminals or quick connect terminals

Approvals

- VDE Certificate Number: 40030341
- UL File Number: E96454

Other versions on request

- Types for enhanced glow wire test requirements acc. IEC 60695-2-11 to -13 for the use in unattended household equipment acc. IEC 60335-1
- Variant with notch for V-Lock mating Cordsets

References

Alternative: protection class II version [4794](#)

Weblinks

[pdf](#), [General Product Information](#), [Approvals](#), [RoHS](#), [CHINA-RoHS](#), [Mating Connectors](#), [e-Store](#), [SCHURTER-Stock-Check](#), [Distributor-Stock-Check](#), [Accessories](#), [Wire Harness](#)

Newly available variants corresponding to V-Lock mating cordset. The connector is equipped with a notch intended for use with the latching cordset. The cord latching system prevents against accidental removal of the cordset.

Technical Data

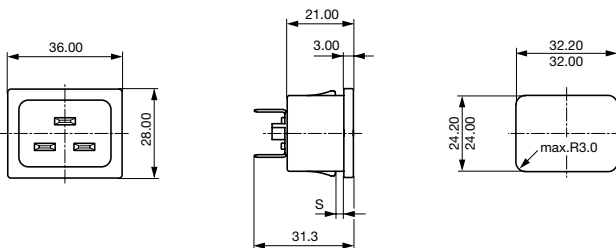
Ratings IEC	16A / 250VAC; 50Hz
Ratings UL/CSA	20A / 250VAC; 60Hz
Dielectric Strength	> 2 kVAC between L-N > 2 kVAC between L/N-PE (1 min/50Hz)
Allowable Operation Temp.	-25 °C to 70 °C
Degree of Protection	from front side IP 30 acc. to IEC 60529
Protection Class	Suitable for appliances with protection class 1 acc. to IEC 61140
Terminal	Solder terminals or quick connect terminals
Panel Thickness s	Snap-in: 1/1.2/1.5/2/2.5/3 mm
Material: Housing	Thermoplastic, black, UL 94V-0

Appliance Inlet	C20 acc. to IEC/EN 60320-1, UL 498, CSA C22.2 no. 42 (for cold conditions) pin-temperature 70 °C, 16A, Protection Class 1
-----------------	--

Dimensions

4793

36 mm



Variants

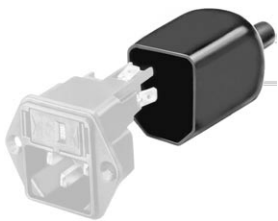
Panel mounting	Panel Thickness s [mm]	Terminal	Order Number
Snap-in	1	Quick connect terminals 6.3 x 0.8 mm	4793.3000
Snap-in	1.2	Quick connect terminals 6.3 x 0.8 mm	4793.8000
Snap-in	1.5	Quick connect terminals 6.3 x 0.8 mm	4793.4000
Snap-in	2	Quick connect terminals 6.3 x 0.8 mm	4793.5000
Snap-in	2.5	Quick connect terminals 6.3 x 0.8 mm	4793.6000
Snap-in	3	Quick connect terminals 6.3 x 0.8 mm	4793.7000
Snap-in	1	Solder terminals 3.8 x 0.8 mm	4793.3200
Snap-in	1.2	Solder terminals 3.8 x 0.8 mm	4793.8200
Snap-in	1.5	Solder terminals 3.8 x 0.8 mm	4793.4200
Snap-in	2	Solder terminals 3.8 x 0.8 mm	4793.5200
Snap-in	2.5	Solder terminals 3.8 x 0.8 mm	4793.6200
Snap-in	3	Solder terminals 3.8 x 0.8 mm	4793.7200

Articles for enhanced glow wire test requirements acc. IEC 60695-2-11 to -13 can be ordered with ending ".15" (xxxx.xxxx.15). They are suitable for the use in unattended household equipment acc. IEC 60335-1.

Packaging unit 100 Pcs

Accessories

Description



Assorted Covers
Rear Cover

0859.0047



Wire Harness
Wire harness for SCHURTER products



Cord retaining kits
Cord retaining strain relief

Flat head, L

4700.0011

Mating Outlets/Connectors

Category / Description

[Connector Overview complete](#)



IEC Connector C19, Rewireable, Straight	0104
IEC Connector C19, Rewireable, Angled	1651
IEC Connector C19, Rewireable, Straight	1652
IEC Connector C19, Rewireable, Angled	4790
IEC Connector C19, Rewireable, Straight	4795

[Connector further types to 4793](#)



[Power Cord Overview complete](#)

[Power Cord with IEC Connector C19, Straight](#)

[1654](#)

[Power Cord further types to 4793](#)

[Power Supply or Interconnection Cord Overview complete](#)

[Divers Power Supply and Interconnection Cords 16 A](#)

[Kabelverbindung/16 A](#)

[Power Supply or Interconnection Cord further types to 4793](#)