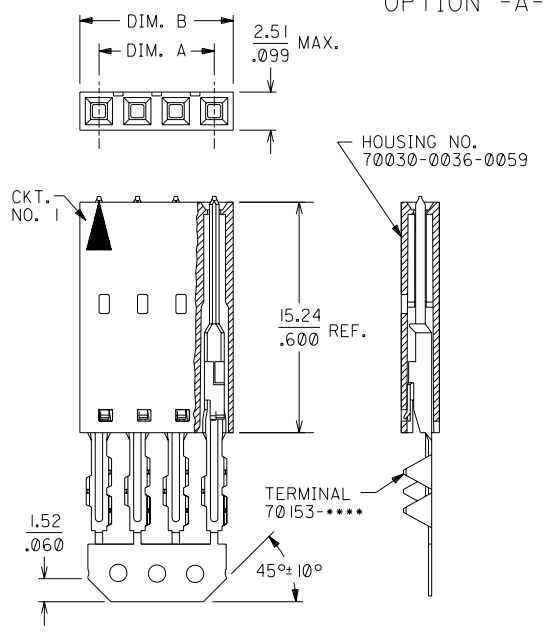
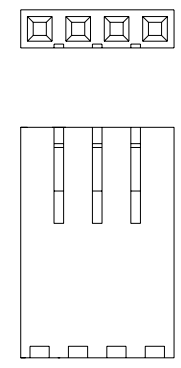
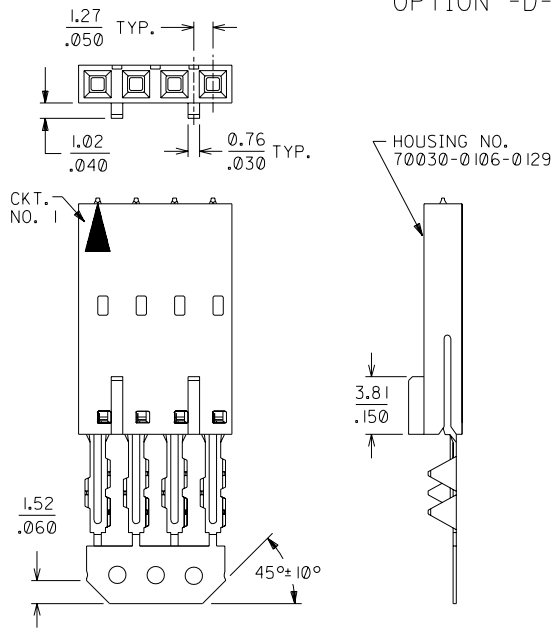


OPTION -A-

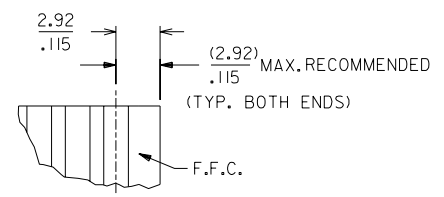
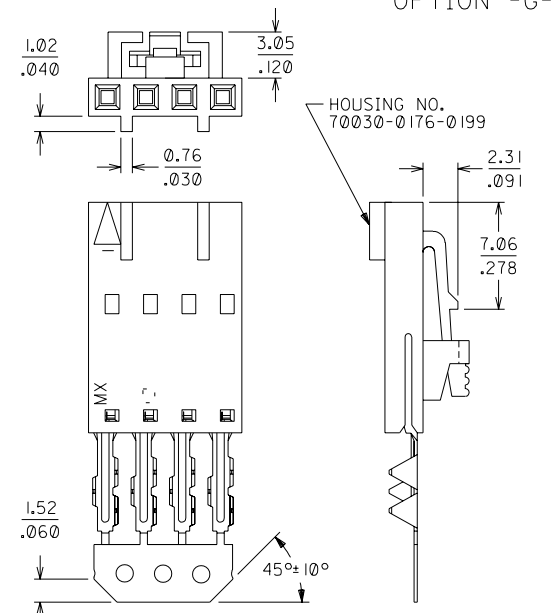


OPTION -D-



OPTIONAL CORE-OUT FOR HOUSING OPTIONS A & D  
 CKT. SIZES 2-25  
 (FOR CONTROL OF BOW)

OPTION -G-



- NOTES:
- HOUSING: POLYESTER (PBT), UL94 V-0  
 COLOR: BLACK  
 TERMINAL: PHOSPHOR-BRONZE
  - FINISHES:  
 SEE PAGE 2 FOR PLATING FINISHES
  - PRODUCT SPECIFICATION: PS-70431
  - PACKAGING SPECIFICATION: PK-70873-0001
  - SEE CHART FOR CIRCUIT SIZES.
  - TERMINALS ARE SHOWN PRE-LOADED INTO HOUSING AND LOCKED INTO FIRST ROW OF LOCKING TANG WINDOWS.
  - ALL DIMENSIONS ARE FOR REFERENCE ONLY
  - SEE SHEET 2 FOR PART NUMBERS AND PLATINGS.

CKT. SIZE	DIM. "A" DIM. A	DIM. "B" DIM. B (MAX.)
2	(2.54) .100	(5.05) .199
3	(5.08) .200	(7.59) .299
4	(7.62) .300	(10.13) .399
5	(10.16) .400	(12.67) .499
6	(12.70) .500	(15.21) .599
7	(15.24) .600	(17.75) .699
8	(17.78) .700	(20.29) .799
9	(20.32) .800	(22.83) .899
10	(22.86) .900	(25.37) .999
11	(25.40) 1.000	(27.91) 1.099
12	(27.94) 1.100	(30.45) 1.199
13	(30.48) 1.200	(32.99) 1.299
14	(33.02) 1.300	(35.53) 1.399
15	(35.56) 1.400	(38.07) 1.499
16	(38.10) 1.500	(40.61) 1.599
17	(40.64) 1.600	(43.15) 1.699
18	(43.18) 1.700	(45.69) 1.799
19	(45.72) 1.800	(48.23) 1.899
20	(48.26) 1.900	(50.77) 1.999
21	(50.80) 2.000	(53.31) 2.099
22	(53.34) 2.100	(55.85) 2.199
23	(55.88) 2.200	(58.39) 2.299
24	(58.42) 2.300	(60.93) 2.399
25	(60.96) 2.400	(63.47) 2.499

MM INCH  
 2 E  
 1 E  
 MFG. SH. REV.

E	LEAD FREE LCP2004-1769 RWHITE 04/03/24	B2	ADD CARRIER CHAMF ECN #UDT1998-0280 05/20/98 LMCGRATH	UNLESS OTHERWISE SPECIFIED TOLERANCES: ANGULAR ± 1/2°		▽ = 0 ▼ = 0 REVISE ONLY ON CAD SYSTEM																			
D	ADD OPTION G ASSY ECN UDT2001-1260 BSMART 01/05/09	B1	REVISED PER ECR# U40643 05-20-94 WGM	<table border="1"> <tr><td>3 PLACE</td><td>±</td><td>INCH</td><td>±</td><td>METRIC</td><td>±</td></tr> <tr><td>2 PLACE</td><td>±</td><td></td><td>±</td><td></td><td>±</td></tr> <tr><td>1 PLACE</td><td>±</td><td></td><td>±</td><td></td><td>±</td></tr> </table>		3 PLACE	±	INCH	±	METRIC	±	2 PLACE	±		±		±	1 PLACE	±		±		±	TITLE ASSEMBLY, SL CONNECTOR, FFC MALE, SINGLE ROW (2.54)X.100 GRID	
3 PLACE	±	INCH	±	METRIC	±																				
2 PLACE	±		±		±																				
1 PLACE	±		±		±																				
C	ADD 2 & 3 CKT ASY'S ECN UDT1999-0512 M. MINK 98/1/5	B	REDRAWN ON CAD PER ECR# U82221 12/19/88 MGB	DRAWING WHERE APPLICABLE MUST REMAIN WITHIN DIMENSIONS		MOLEX INCORPORATED SHEET NO. DATE LISLE, ILL. 60532 U.S.A. 1 OF 2 12/21/88																			
LTR. REVISIONS		LTR. REVISIONS		DRAWN BY: MGB CHK'D BY: MGB APPROV. BY: WAZ SCALE: 4:1		SEE CHARTS SDA-70431-**** FILE NAME: S70431X1.DWG. DIV. SIZE: DA C																			

CKT. SIZE	TIN PLATE OPTION -A-		TIN PLATE OPTION -D-		15 GOLD PLATE OPTION -A-		15 GOLD PLATE OPTION -D-		30 GOLD PLATE OPTION -A-		30 GOLD PLATE OPTION -D-		TIN PLATE OPTION -G-	
	EDP. NO.	ENG. NO.	EDP. NO.	ENG. NO.	EDP. NO.	ENG. NO.	EDP. NO.	ENG. NO.	EDP. NO.	ENG. NO.	EDP. NO.	ENG. NO.	EDP. NO.	ENG. NO.
2	15-38-9020	A-70431-0001	15-38-9022	A-70431-0071	15-47-4028	A-70431-0176	15-47-5020	A-70431-0246	15-47-5022	A-70431-0351	15-47-5024	A-70431-0421		
3	-9030	-0002	-9032	-0072	-4038	-0177	-5030	-0247	-5032	-0352	-5034	-0422		
4	-9040	-0003	-9042	-0073	-4048	-0178	-5040	-0248	-5042	-0353	-5044	-0423		
5	-9050	-0004	-9052	-0074	-4058	-0179	-5050	-0249	-5052	-0354	-5054	-0424		
6	-9060	-0005	-9062	-0075	-4068	-0180	-5060	-0250	-5062	-0355	-5064	-0425		
7	-9070	-0006	-9072	-0076	-4078	-0181	-5070	-0251	-5072	-0356	-5074	-0426		
8	-9080	-0007	-9082	-0077	-4088	-0182	-5080	-0252	-5082	-0357	-5084	-0427		
9	-9090	-0008	-9092	-0078	-4098	-0183	-5090	-0253	-5092	-0358	-5094	-0428		
10	-9100	-0009	-9102	-0079	-4108	-0184	-5100	-0254	-5102	-0359	-5104	-0429	15-38-9103	A-70431-0149
11	-9110	-0010	-9112	-0080	-4118	-0185	-5110	-0255	-5112	-0360	-5114	-0430		
12	-9120	-0011	-9122	-0081	-4128	-0186	-5120	-0256	-5122	-0361	-5124	-0431		
13	-9130	-0012	-9132	-0082	-4138	-0187	-5130	-0257	-5132	-0362	-5134	-0432		
14	-9140	-0013	-9142	-0083	-4148	-0188	-5140	-0258	-5142	-0363	-5144	-0433		
15	-9150	-0014	-9152	-0084	-4158	-0189	-5150	-0259	-5152	-0364	-5154	-0434		
16	-9160	-0015	-9162	-0085	-4168	-0190	-5160	-0260	-5162	-0365	-5164	-0435		
17	-9170	-0016	-9172	-0086	-4178	-0191	-5170	-0261	-5172	-0366	-5174	-0436		
18	-9180	-0017	-9182	-0087	-4188	-0192	-5180	-0262	-5182	-0367	-5184	-0437		
19	-9190	-0018	-9192	-0088	-4198	-0193	-5190	-0263	-5192	-0368	-5194	-0438		
20	-9200	-0019	-9202	-0089	-4208	-0194	-5200	-0264	-5202	-0369	-5204	-0439		
21	-9210	-0020	-9212	-0090	-4218	-0195	-5210	-0265	-5212	-0370	-5214	-0440		
22	-9220	-0021	-9222	-0091	-4228	-0196	-5220	-0266	-5222	-0371	-5224	-0441		
23	-9230	-0022	-9232	-0092	-4238	-0197	-5230	-0267	-5232	-0372	-5234	-0442		
24	-9240	-0023	-9242	-0093	-4248	-0198	-5240	-0268	-5242	-0373	-5244	-0443		
25	15-38-9250	A-70431-0024	15-38-9252	A-70431-0094	15-47-4258	A-70431-0199	15-47-5250	A-70431-0269	15-47-5252	A-70431-0374	15-47-5254	A-70431-0444		

PLATING PER ES-88:	CARRIER STRIP COLOR CODE
TIN	NONE
15 GOLD	YELLOW
30 GOLD	RED

PLATING CHART PER ES-88-\*\*\*

TIN: TIN OVERALL  
THICKNESS: 3.81 MICROMETERS (150 MICROINCHES) MINIMUM  
ALL OVER A NICKEL UNDERPLATE.

15 GOLD: SELECTIVE GOLD (Au) WITH SELECTIVE TIN  
THICKNESS: 0.38 MICROMETERS (15 MICROINCHES) MINIMUM GOLD (Au) IN SELECT AREA  
1.90 MICROMETERS (75 MICROINCHES) MINIMUM TIN IN SELECT AREA  
ALL OVER A NICKEL UNDERPLATE.

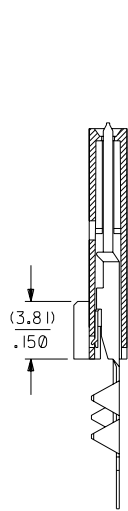
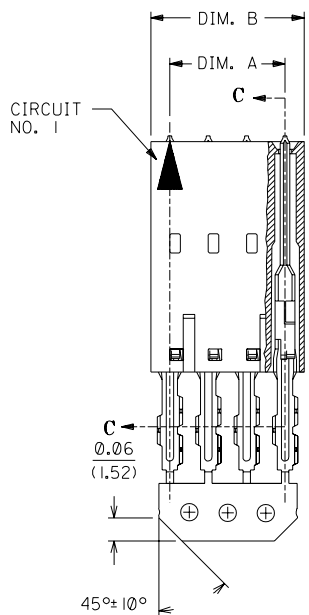
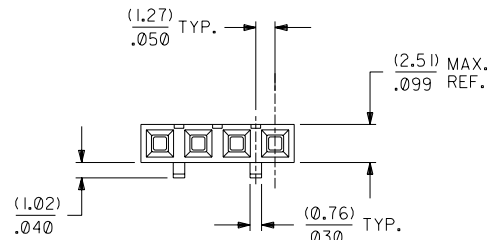
30 GOLD: SELECTIVE GOLD (Au) WITH SELECTIVE TIN  
THICKNESS: 0.76 MICROMETERS (30 MICROINCHES) MINIMUM GOLD (Au) IN SELECT AREA  
1.90 MICROMETERS (75 MICROINCHES) MINIMUM TIN IN SELECT AREA  
ALL OVER A NICKEL UNDERPLATE.

\*THE PRIMARY SHIPPING CARTON WILL BE LABELED "COMPLIANT TO RoHS DIRECTIVE 2002/95/EC AND ELV ANNEX II OF DIRECTIVE 2000/53/EC".  
CARTONS WITHOUT THIS LABEL MAY CONTAIN PRODUCT WITH LEAD.

MM  
INCH

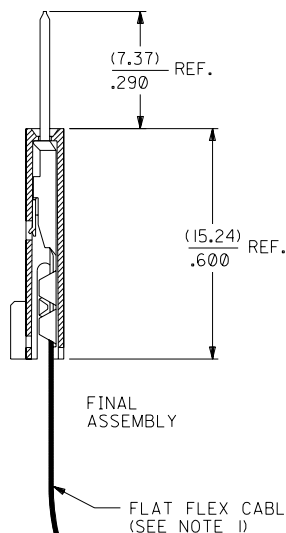
UNLESS OTHERWISE SPECIFIED TOLERANCES: ANGULAR ± 1/2°		REVISIONS		REVISIONS		REVISIONS		REVISIONS		REVISIONS		REVISIONS		REVISIONS	
E SEE SHEET I		D SEE SHEET I		C SEE SHEET I		BI SEE SHEET I		LTR.		LTR.		LTR.		LTR.	
DRWG. BY: MGB		CHK'D. BY: MJM		APP'D. BY: WAZ		SCALE: --:--		FILE NAME: S70431K2.DGN		THIS DRAWING CONTAINS INFORMATION THAT IS PROPRIETARY TO MOLEX INC. AND SHOULD NOT BE USED WITHOUT WRITTEN PERMISSION.		DATE: 12/21/88		SHEET NO.: 2	
TITLE: ASSY, SL CONNECTOR, FFC MALE, SINGLE ROW, (2.54) x .100 GRID		PART NO.: SDA-70431-****		DRWG. NO.: SEE CHARTS		MATERIAL: MOLEX INCORPORATED U.S.A. 68532		DRAWN BY: DA		CHECKED BY: IC		DATE: 12/21/88		SHEET NO.: 2	

"D" - OPTION



PRE-LOAD ASSEMBLY

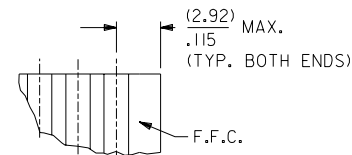
SECTION C-C



FINAL ASSEMBLY  
FLAT FLEX CABLE (F.F.C.)  
(SEE NOTE 1)

- NOTES:
- 1) PRE LOADED ASSEMBLY TO BE USED WITH (0.30)/.012 MAX. THICK FLAT FLEX CABLE WITH (1.57)/.062 WIDE COPPER CONDUCTORS ON (2.54)/.100 CENTERS OR, (0.13)/.005 - (0.28)/.011 THICK MYLAR WITH (1.02)/.040 - (1.65)/.065 WIDE SILVER INK CONDUCTORS ON (2.54)/.100 CENTERS.
  - 2) STANDARD PACKAGING PER PK70873-0001 SHALL BE USED.
  - 3) SEE CHART FOR CIRCUIT SIZES, "A" AND "B" DIMENSIONS.
  - 4) ALL DIMENSIONS ARE FOR REFERENCE ONLY.
  - 5) PARTS ARE STACKABLE SIDE TO SIDE AT (2.54)/.100 CENTERS.
  - 6) SEE DETAIL I FOR MAXIMUM END DIMENSION OF F.F. CABLE. (RECOMMENDED WHEN USED WITH PANEL MOUNT CLIPS)
  - 7) REFER TO PRODUCT SPECIFICATION PS-70431.

CKT. SIZE	A	B	EDP. NO.	ENG. NO.
2	( 2.54 ) .100	( 5.05 ) .199	NOT TOOLED	AX-70431-0421
3	( 5.08 ) .200	( 7.59 ) .299	NOT TOOLED	AX-70431-0422
4	( 7.62 ) .300	( 10.13 ) .399	15-47-5044	A-70431-0423
5	( 10.16 ) .400	( 12.67 ) .499	15-47-5054	A-70431-0424
6	( 12.70 ) .500	( 15.21 ) .599	15-47-5064	A-70431-0425
7	( 15.24 ) .600	( 17.75 ) .699	15-47-5074	A-70431-0426
8	( 17.78 ) .700	( 20.29 ) .799	15-47-5084	A-70431-0427
9	( 20.32 ) .800	( 22.83 ) .899	15-47-5094	A-70431-0428
10	( 22.86 ) .900	( 25.37 ) .999	15-47-5104	A-70431-0429
11	( 25.54 ) 1.000	( 27.91 ) 1.099	15-47-5114	A-70431-0430
12	( 27.94 ) 1.100	( 30.45 ) 1.199	15-47-5124	A-70431-0431
13	( 30.48 ) 1.200	( 32.99 ) 1.299	15-47-5134	A-70431-0432
14	( 33.02 ) 1.300	( 35.53 ) 1.399	15-47-5144	A-70431-0433
15	( 35.56 ) 1.400	( 38.07 ) 1.499	15-47-5154	A-70431-0434
16	( 38.01 ) 1.500	( 40.61 ) 1.599	15-47-5TIN	A-70431-0435
17	( 40.64 ) 1.600	( 43.15 ) 1.699	15-47-5174	A-70431-0436
18	( 43.18 ) 1.700	( 45.69 ) 1.799	15-47-5184	A-70431-0437
19	( 45.72 ) 1.800	( 48.23 ) 1.899	15-47-5194	A-70431-0438
20	( 48.26 ) 1.900	( 50.77 ) 1.999	15-47-5204	A-70431-0439
21	( 50.80 ) 2.000	( 53.31 ) 2.099	15-47-5214	A-70431-0440
22	( 53.34 ) 2.100	( 55.85 ) 2.199	15-47-5224	A-70431-0441
23	( 55.88 ) 2.200	( 58.39 ) 2.299	15-47-5234	A-70431-0442
24	( 58.42 ) 2.300	( 60.93 ) 2.399	15-47-5244	A-70431-0443
25	( 60.96 ) 2.400	( 63.47 ) 2.499	15-47-5254	A-70431-0444



DETAIL - I  
(SEE NOTE 7)

PLATING PER ES-88:	COLOR CODE
TIN	NONE
15 GOLD	YELLOW
30 GOLD	RED

HOUSING MATERIAL : G.F. POLYESTER, 94V-0  
TERMINAL MATERIAL : PHOSPHOR BRONZE

PLATING PER E.S. -88-\*\*\*  
30 GOLD - .000030 MINIMUM GOLD PLATE IN SELECT AREA WITH  
.000075 MINIMUM TIN PLATE IN SELECT AREA  
OVER .000050 MINIMUM NICKEL PLATE OVERALL.

\*THE PRIMARY SHIPPING CARTON WILL BE LABELED "COMPLIANT TO  
RoHS DIRECTIVE 2002/95/EC AND ELV ANNEX II OF DIRECTIVE 2000/53/EC".  
CARTONS WITHOUT THIS LABEL MAY CONTAIN PRODUCT WITH LEAD.

MFG. SH. REV.		REVISE ONLY ON CAD SYSTEM	
B2		ADD CARRIER CHAMF ECN #UDT1998-0280 05/20/98 LMCCRATH	
B1		REVISED PER ECR# U40643 05-20-94 WGM	
C		REDRAWN ON CAD PER ECR# U82221 12/28/88 MGB	
LTR.	REVISIONS	LTR.	REVISIONS

DIMENSIONS SHOWN (METRIC) INCH UNLESS OTHERWISE SPECIFIED TOLERANCES: ANGULAR $\pm 1/2^\circ$		TITLE ASSEMBLY, CONNECTOR F.F.C. MALE SINGLE ROW (2.54)/.100 GRID	
5 PLACE $\pm$	INCH	METRIC	
2 PLACE $\pm$			
1 PLACE $\pm$			
DRAFT WHERE APPLICABLE MUST REMAIN WITHIN DIMENSIONS		MOLEX INCORPORATED LISLE, ILL. 60532 U.S.A.	
DRG. BY: MGB		SHEET NO. 1	
CHK'D. BY: MJM		DATE 12/28/88	
APP'D. BY: WAZ		PART NO. SDA-70431-0421-0444	
SCALE 4:1		DRG. NO. SDA-70431-0421-0444	
		FILE NAME S70431AX7.DGN	
		THIS DRAWING CONTAINS INFORMATION THAT IS PROPRIETARY TO MOLEX INC. AND SHOULD NOT BE USED WITHOUT WRITTEN PERMISSION.	
		DA C	