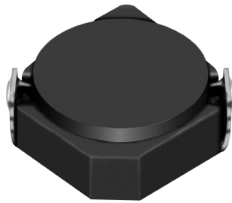


SMD Power Inductor CDRH3D18



Description

- Ferrite drum core construction.
- Magnetically shielded.
- L × W × H: 4.0 × 4.0 × 2.0 mm Max.
- Product weight: 0.1g(Ref.)
- Moisture Sensitivity Level: 1
- RoHS compliance.

Environmental Data

- Operating temperature range: -40°C~+105°C (including coil's self temperature rise)
- Storage temperature range: -40°C~+105°C
- Solder reflow temperature: 260 °C peak.

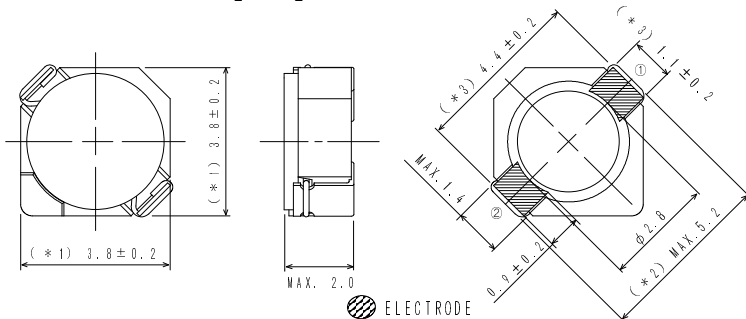
Packaging

- Carrier tape and reel packaging
- 7.0" diameter reel
- 1000pcs per reel

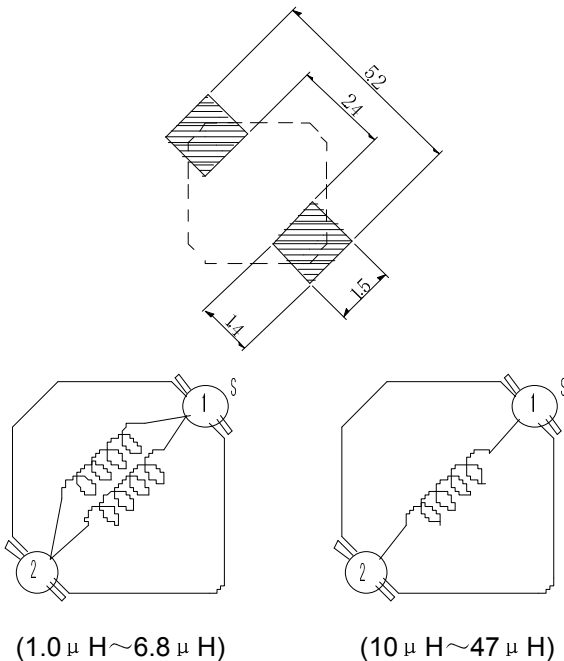
Applications

- Ideally used in Mobilephone, PDA, MP3, DSC/DVC, etc as DC-DC converter inductors.

Dimension - [mm]



Land pattern and Schematics - [mm]



SMD Power Inductor CDRH3D18



Electrical Characteristics

| Part Name | Stamp | Inductance (μ H) [within] ※1 | D.C.R. (m Ω) Max. (Typ.) (at 20°C) | Saturation Current (A) ※2 | | Temperature Rise Current (A) ※3 |
|------------------|-------|---|--|------------------------------|----------|---------------------------------------|
| | | | | at 20°C | at 100°C | |
| CDRH3D18NP-1R0NC | A | 1.0 \pm 30% | 50(40) | 2.80 | 2.00 | 2.40 |
| CDRH3D18NP-2R2NC | B | 2.2 \pm 30% | 63(50) | 1.80 | 1.30 | 2.00 |
| CDRH3D18NP-3R0NC | C | 3.0 \pm 30% | 69(55) | 1.60 | 1.20 | 1.80 |
| CDRH3D18NP-4R7NC | D | 4.7 \pm 30% | 107.5(86) | 1.35 | 0.95 | 1.35 |
| CDRH3D18NP-6R8NC | E | 6.8 \pm 30% | 150(120) | 1.10 | 0.80 | 1.10 |
| CDRH3D18NP-100NC | F | 10.0 \pm 30% | 205(164) | 0.90 | 0.65 | 0.90 |
| CDRH3D18NP-120NC | G | 12.0 \pm 30% | 275(220) | 0.80 | 0.60 | 0.80 |
| CDRH3D18NP-150NC | H | 15.0 \pm 30% | 302(241) | 0.75 | 0.55 | 0.75 |
| CDRH3D18NP-220NC | I | 22.0 \pm 30% | 424(339) | 0.60 | 0.45 | 0.60 |
| CDRH3D18NP-330NC | J | 33.0 \pm 30% | 640(512) | 0.50 | 0.35 | 0.45 |
| CDRH3D18NP-470NC | K | 47.0 \pm 30% | 964(771) | 0.40 | 0.30 | 0.35 |

※1. Inductance measuring condition: at 100kHz.

※2. Saturation current: The value of D.C. current when the inductance decreases to 65% of it's nominal value.

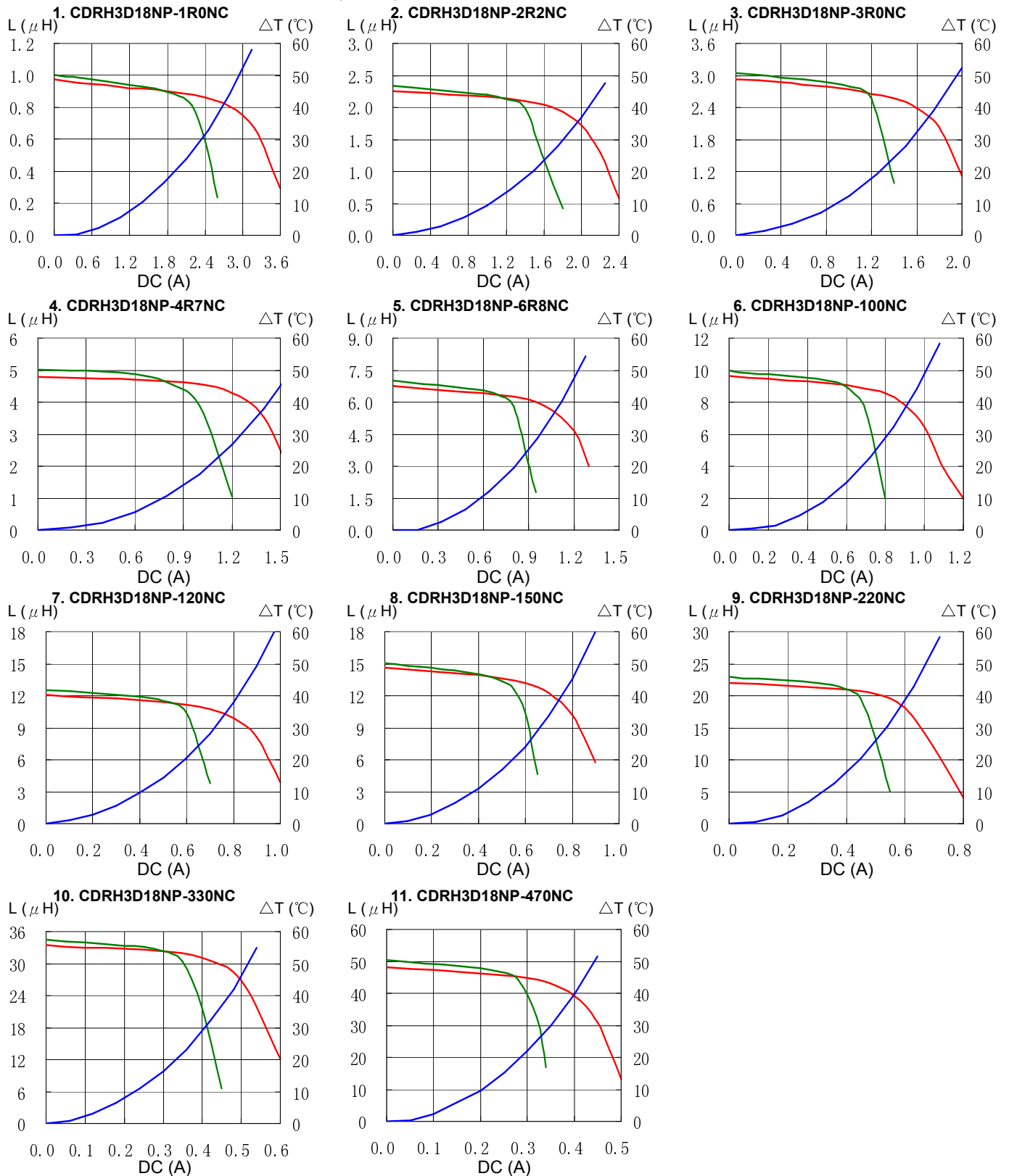
※3. Temperature rise current: The value of D.C. current when the temperature rise is $\Delta t=40^{\circ}\text{C}$ ($T_a=20^{\circ}\text{C}$).

SMD Power Inductor CDRH3D18



Saturation Current & Temperature Rise Graph

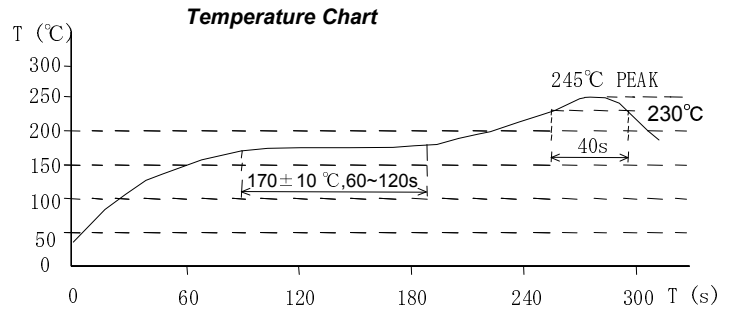
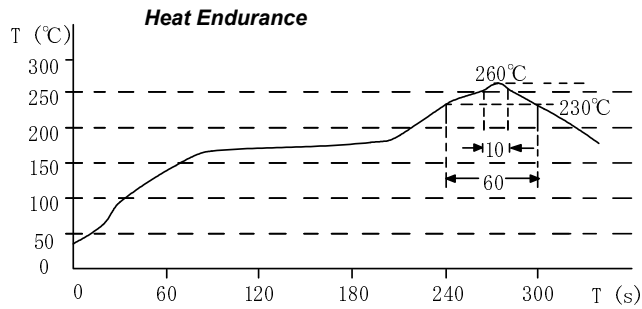
— L (20°C) — L (100°C) — ΔT



SMD Power Inductor CDRH3D18



Solder Reflow Condition



Please refer to the sales offices on our website - <http://www.sumida.com>

Hong Kong

Tel.+852-2880-6688
FAX.+852-2565-9600
sales@hk.sumida.com

Tokyo

Tel.+81-3-5202-7112
FAX.+81-3-5202-7105
sales@jp.sumida.com

Chicago

Tel.+1-847-545-6700
FAX. +1-847-545-6720
sales@us.sumida.com

Shanghai

Tel.+86-021-5836-3299
FAX.+86-021-5836-3266
shanghai.sales@cn.sumida.com

Seoul

Tel.+82-2-6237-0777
FAX.+82-2-6237-0778
sales@kr.sumida.com

Oberzell

Tel.+49-8591-937-0
FAX. +49-8591-937-103
contact@sumida-eu.com

Shenzhen

Tel.+86-755-8291-0228
FAX.+86-755-8291-0338
shenzhen.sales@cn.sumida.com

Singapore

Tel.+65-6296-3388
FAX.+65-6296-3390
sales@sg.sumida.com

Neumarkt

Tel.+49-9181-4509-110
FAX. +49-9181-4509-310
infocomp@eu.sumida.com

Taipei

Tel.+886-2-8751-2737
FAX.+886-2-8751-2738
sales@tw.sumida.com

San Jose

Tel.+1-408-321-9660
FAX.+1-408-321-9308
sales@us.sumida.com

Mouser Electronics

Authorized Distributor

Click to View Pricing, Inventory, Delivery & Lifecycle Information:

Sumida:

[CDRH3D18NP-100NC](#) [CDRH3D18NP-220NC](#) [CDRH3D18NP-330NC](#) [CDRH3D18NP-3R0NC](#) [CDRH3D18NP-470NC](#) [CDRH3D18NP-150NC](#) [CDRH3D18NP-4R7NC](#) [CDRH3D18NP-120NC](#) [CDRH3D18NP-1R0NC](#) [CDRH3D18NP-2R2NC](#) [CDRH3D18NP-6R8NC](#)