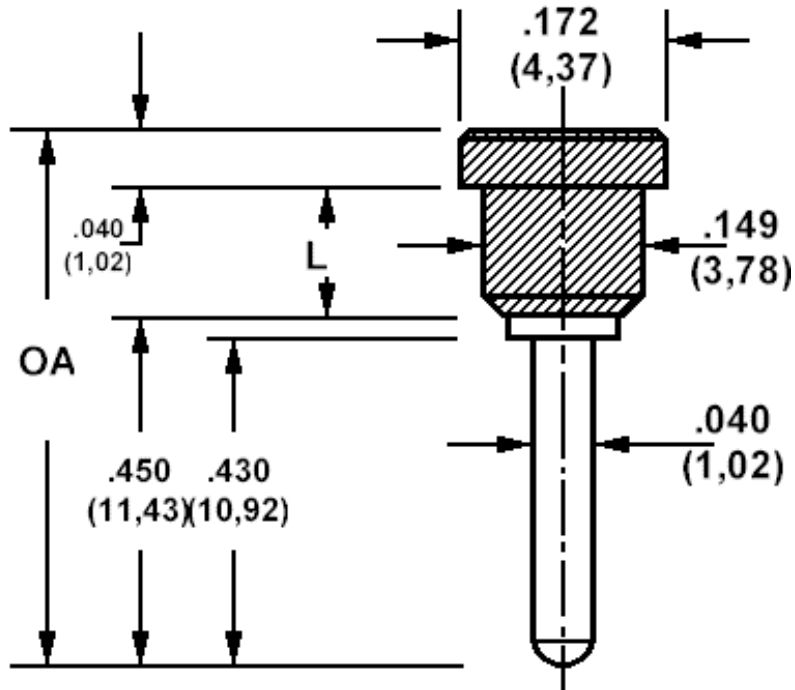


## 571-4046 Insulated solder terminal, Pin type

Recommended mounting hole .136 (3,45)



### How to order code

**571-4046-XX-YY-19**

Basic Part No (XX = Panel thickness, YY = plating finish. See tables for options)

Basic Part No.		OA(ref)	L	Panel Thickness (XX)
571-4046	-01	.590 (14,99)	.100 (2,54)	.031 (0,79) to .062 (1,59)
	-02	.615 (15,62)	.125 (3,18)	.031 (0,79) to .085 (2,16)

Component	Material	Finish (YY)	
		-01	-05
Terminal	Brass	Silver	Electro Solder
Insulator	Teflon - white		

Additional Specifications	Panel thickness	
	-01	-02
Flashover VRMS at Sea Level	3000	3500
Capacitance (pF)	0.5	0.5

Teflon is a registered trademark of Dupont