

**Low Cost Two-Way SMT Power  
Divider, 1700 - 1900 MHz**

**MAPDCC0004  
V2**

**Features**

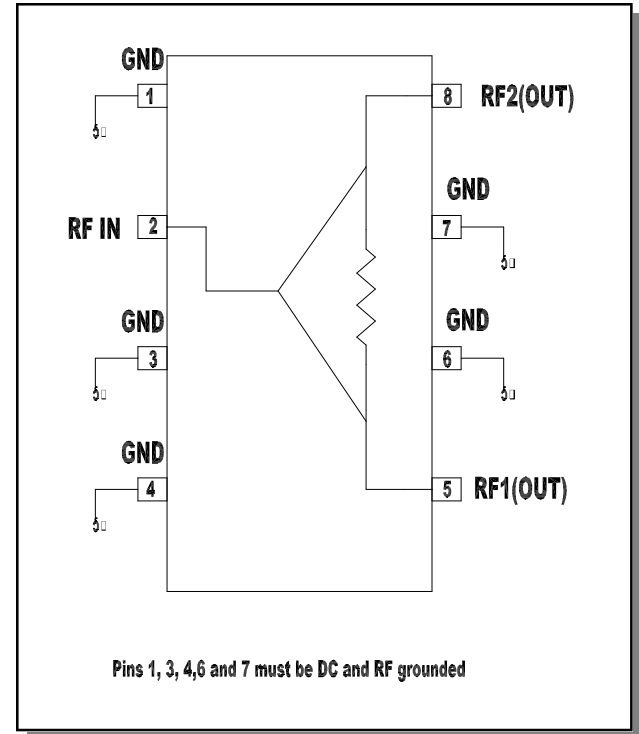
- Small Size and Low Profile
- Industry Standard SOIC-8 SMT Plastic Package
- Superior Repeatability
- Excellent Amplitude Balance: 0.05 dB Typical
- Excellent Insertion Loss: 0.3 dB Typical
- Low Cost
- DCS-1800 Frequency Coverage
- Lead-Free SOIC-8 Package
- 100% Matte Tin Plating over Copper
- Halogen-Free "Green" Mold Compound
- 260°C Reflow Compatible
- RoHS\* Compliant Version of DS52-0005

**Description**

M/A-COM's MAPDCC0004 is an IC-based monolithic power divider in a low cost SOIC-8 plastic package. This 2-way power splitter is ideally suited for applications where small size, low profile and low cost, without sacrificing performance are required. Typical applications include base station, portables and PCMCIA cards for DCS-1800 European applications. Available in tape and reel.

The MAPDCC0004 is fabricated using a passive-integrated circuit process. The process features full-chip passivation for increased performance and reliability.

**Functional Block Diagram**



**Ordering Information**

Part Number	Package
MAPDCC0004	Bulk Packaging
MAPDCC0004TR	1000 piece reel
MAPDCC0004-TB	Sample Test Board

Note: Reference Application Note M513 for reel size information.  
Note: Die quantity varies.

**Pin Configuration**

Pin No.	Function
1	GND
2	RF-IN
3	GND
4	GND
5	RF-1 (out)
6	GND
7	GND
8	RF-2 (out)

\* Restrictions on Hazardous Substances, European Union Directive 2002/95/EC.

**Low Cost Two-Way SMT Power  
Divider, 1700 - 1900 MHz**

**MAPDCC0004  
V2**

**Electrical Specifications<sup>1</sup>: T<sub>A</sub> = 25°C**

Parameter	Test Conditions	Frequency	Units	Min	Typ	Max
Insertion Loss	Above 3.0 dB	1700 - 1900	dB	—	0.3	0.5
Isolation	—	1700 - 1900	dB	15	20	—
VSWR	—	1700 - 1900	Ratio	—	1.3:1	1.5:1
Amplitude Balance	—	1700 - 1900	dB	—	0.1	0.15
Phase Balance	—	1700 - 1900	Deg	—	2	4

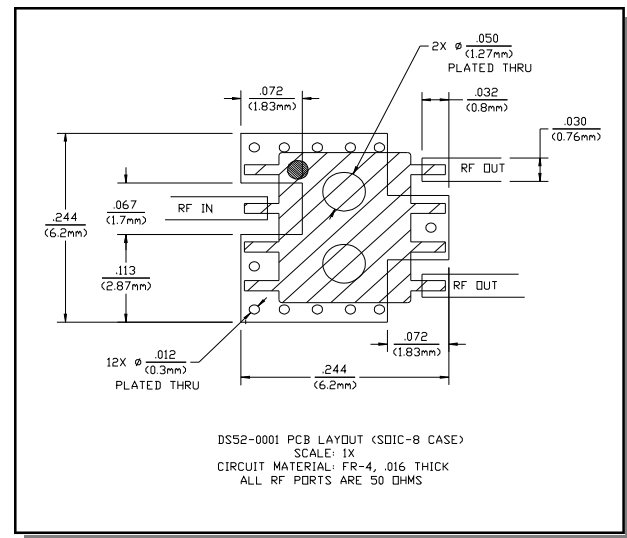
1. All specifications apply with a 50-ohm source and load impedance.

**Absolute Maximum Ratings<sup>2,3</sup>**

Parameter	Absolute Maximum
Input Power <sup>4</sup>	1W CW
Operating Temperature	-40°C to +85°C
Storage Temperature	-65°C to +150°C

- Exceeding any one or combination of these limits may cause permanent damage to this device.
- M/A-COM does not recommend sustained operation near these survivability limits.
- With internal load dissipation of 0.125W maximum

**Recommended PCB Configuration**



**Handling Procedures**

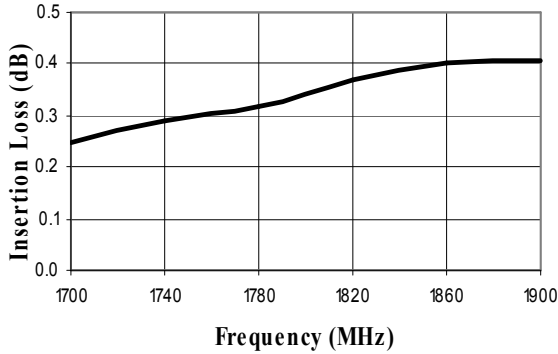
Please observe the following precautions to avoid damage:

**Static Sensitivity**

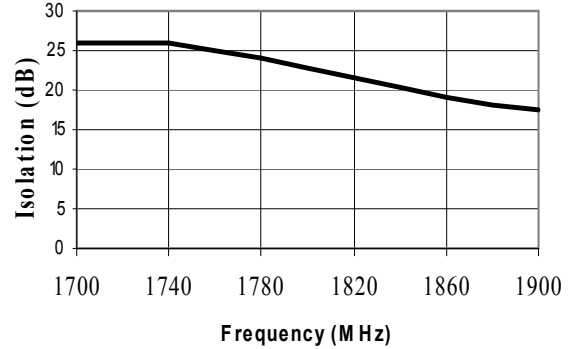
GMIC Circuits are sensitive to electrostatic discharge (ESD) and can be damaged by static electricity. Proper ESD control techniques should be used when handling these devices.

**Typical Performance Curves**

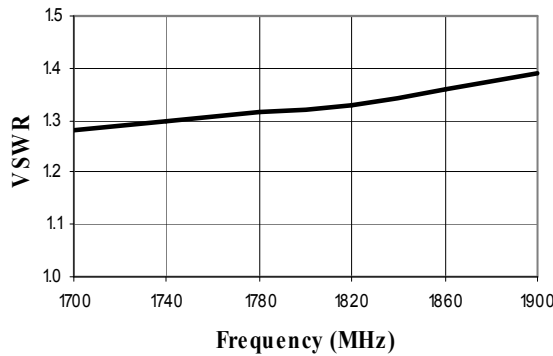
**Insertion Loss vs. Frequency**  
(above theoretical split loss)



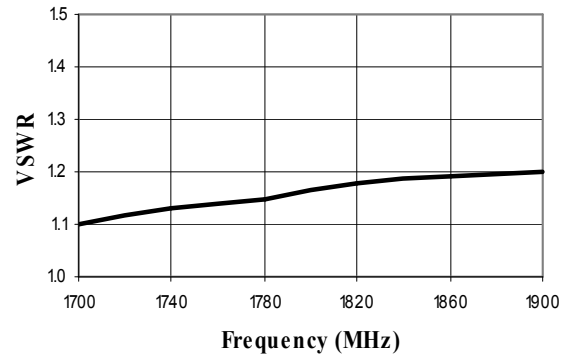
**Isolation vs. Frequency**



**Input VSWR vs. Frequency**



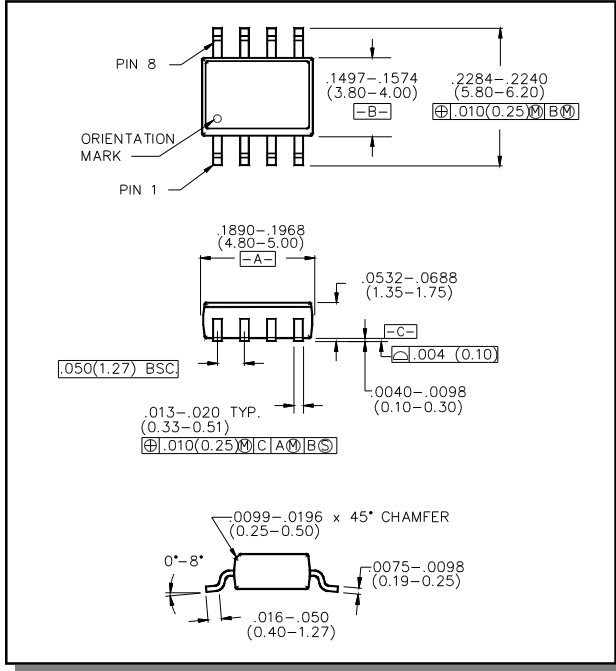
**Output VSWR vs. Frequency**



**Low Cost Two-Way SMT Power  
Divider, 1700 - 1900 MHz**

**MAPDCC0004  
V2**

**Lead-Free, SOIC-8<sup>†</sup>**



<sup>†</sup> Reference Application Note M538 for lead-free solder reflow recommendations.