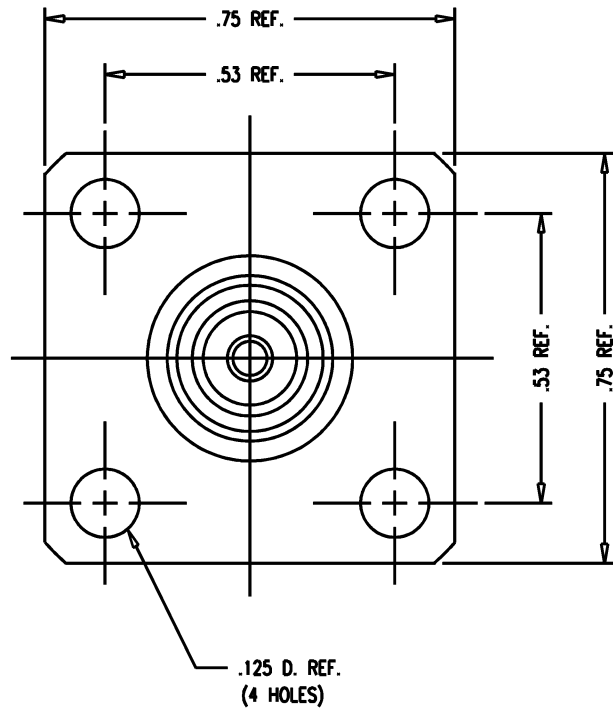
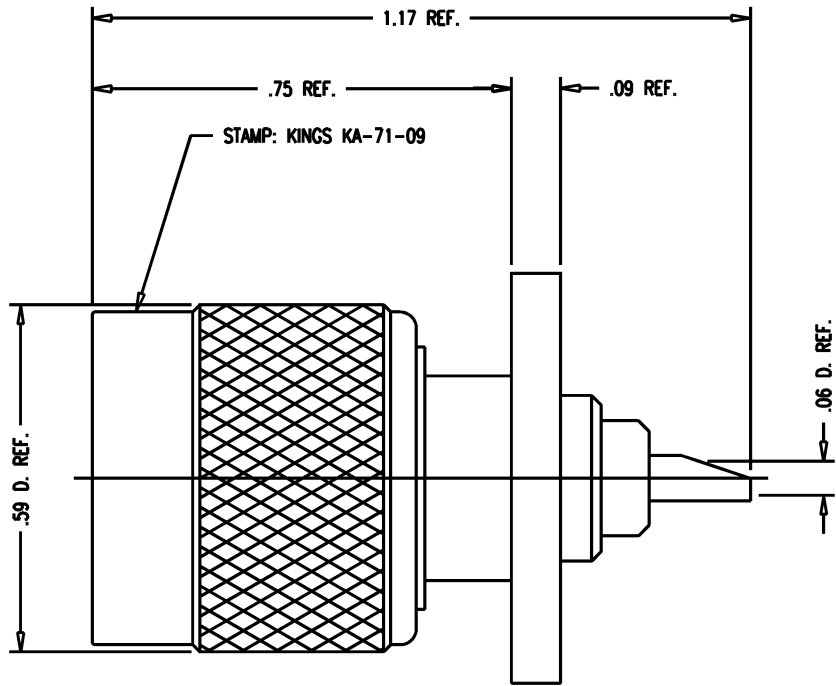


GSD

KA-71-09



NOTES:

1. INTERFACE PER MIL-STD-348, FIG. 313-1.

2. MATERIALS:

- INSULATOR: TEFLON, ASTM-D-1457
- GASKET: SILICONE RUBBER, ZZ-R-765
- OUTER CONTACT } BER. COP., ASTM-B-196
- SPRING WASHER }
- ALL OTHER METAL PARTS: BRASS, ASTM-B16

3. FINISHES:

ALL METAL PARTS: SILVER PLATE PER QQ-S-365

4. ELECTRICAL CHARACTERISTICS:

- NOMINAL IMPEDANCE: 50 OHMS
- FREQUENCY RANGE: DC TO 11 GHZ
- WORKING VOLTAGE: 500 VRMS

REVISIONS

ISSUE	CHANGES
5	CN 34372 C REDRAWN KH 01/06/93

KAM2499

SCALE 4:1

APPROX SURFACE AREA

USED ON

REF:

RECEPTACL, PANEL, TNC

DRAWN KH DATE 01/06/93

DESIGN LI DATE 01/06/93

APPR. DATE

KINGS
ELECTRONICS CO., INC.
TUCKAHOE, NEW YORK 10707

GSD

KA-71-09