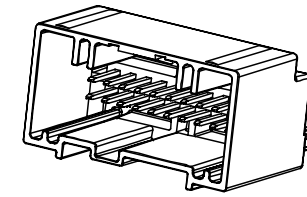
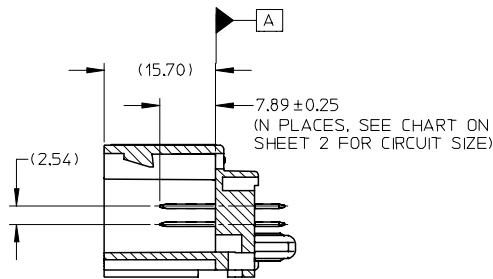
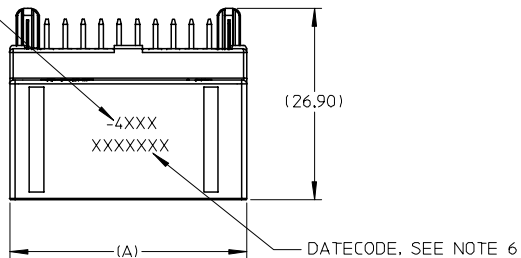


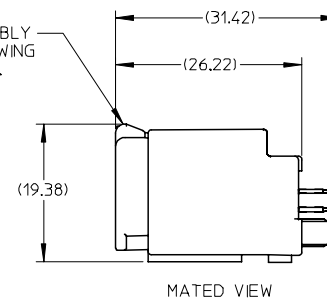
THESE VIEWS APPLY TO 30700-4XXX PART NUMBERS

LAST FOUR (4) DIGITS OF MOLEX ASSEMBLY P/N



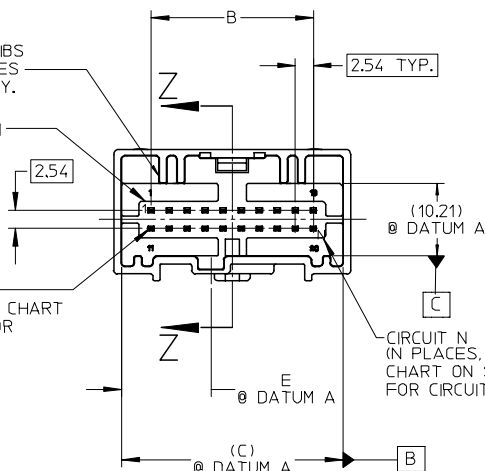
SECTION Z-Z

HARNESS ASSEMBLY SEE SALES DRAWING SD-30700-120.



SCOOP PROOF RIBS FOR CIRCUIT SIZES 14 THRU 20 ONLY.

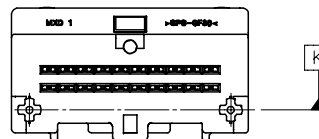
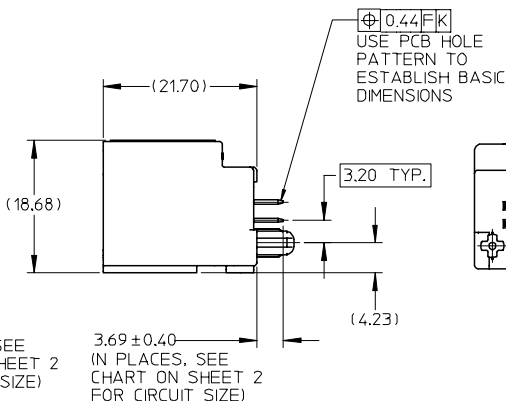
CIRCUIT 1



0.80 x 0.60 (N PLACES SEE CHART ON SHEET 2 FOR CIRCUIT SIZES)

1.16 A B C AT BLADE TIP

CIRCUIT N (N PLACES, SEE CHART ON SHEET 2 FOR CIRCUIT SIZE)



NOTES:

- MATERIAL: HOUSING: SPS, GLASS FILLED, COLOR: SEE CHART. TERMINAL: COPPER ALLOY C26000.
- FINISHES: TERMINAL: TIN(Sn) OVERALL, NICKEL (Ni) UNDERPLATE OVERALL.
- PRODUCT SPECIFICATION: PS-30700-0001
- PACKAGING SPECIFICATION: PK-30907-227
- MATES WITH: SERIES 30700, SEE SALES DRAWING SD-30700-120.
- DATECODE DESCRIPTION:
 - 1ST DIGIT: MACHINE ID# (ALWAYS WILL BE '2')
 - 2ND THROUGH 4TH DIGIT: DAY # OF THE CALENDAR YEAR (EXAMPLE: FEB. 3RD = '034')
 - 5TH DIGIT: LAST DIGIT OF THE CALENDAR YEAR (EXAMPLE: 1999 = '9')
 - 6TH THROUGH 7TH DIGIT: HOUR OF THE DAY.
- RECOMMENDED OPTIONAL SCREW: M2 x 0.89, 6mm IN LENGTH, PAN COLLAR HEAD, 6 LOBE. TORQUE: 7 NEWTON CENTIMETERS

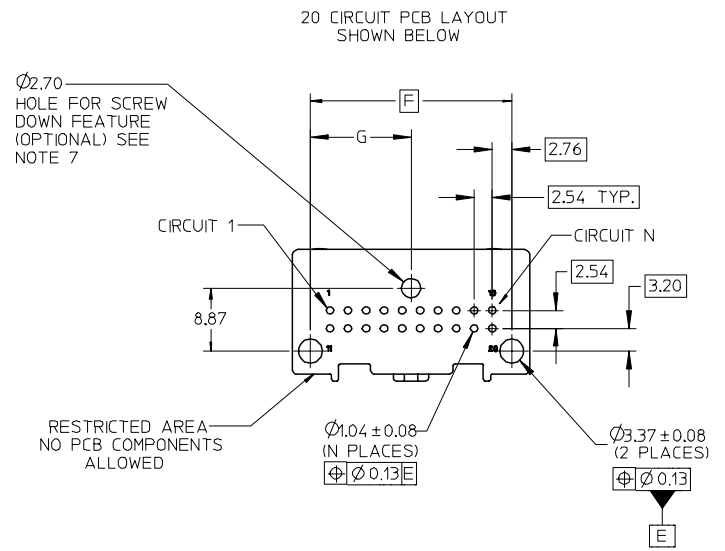
20 CIRCUIT VERTICAL HEADER ASSEMBLY SHOWN

SEE ECN# UAU2001-0258 EC NO: UAU2007-0542 DRWN:BDICK01 2007/03/06 CHKD: 2007/03/06 APPR: SMARCEA0007/03/07	QUALITY SYMBOLS	GENERAL TOLERANCES (UNLESS SPECIFIED)		SCALE 2:1	DESIGN UNITS METRIC	THIRD ANGLE PROJECTION	REVISE ON CAD ONLY
	DESCRIPTION ▽=0 ▽=0		m	INCH	DIMENSION STYLE MM ONLY		TITLE
		4 PLACES	± ---	± ---	DRAWN BY DATE		6-20 CIRCUIT VERTICAL HEADER ASSEMBLY MOLEX INCORPORATED
	3 PLACES	± ---	± ---	RCARLSON 01/03/20			
	2 PLACES	± 0.13	± ---	CHECKED BY DATE		MATERIAL NO. DOCUMENT NO. SHEET NO. ENTER-PART SD-30700-420 1 OF 3	
	1 PLACE	± 0.25	± ---	CKRISHNA 01/03/27			
	ANGULAR ± 1 °		APPROVED BY DATE		THIS DRAWING CONTAINS INFORMATION THAT IS PROPRIETARY TO MOLEX INCORPORATED AND SHOULD NOT BE USED WITHOUT WRITTEN PERMISSION		
	DRAFT WHERE APPLICABLE		LGEIB 01/03/28				
	MUST REMAIN WITHIN DIMENSIONS						

PACKAGING		POLARIZATION OPTIONS & CIRCUIT SIZE		PRODUCT DIMENSIONS					
ASSEMBLY P/N TRAY PACKED	ASSEMBLY P/N TUBE PACKED	VERTICAL HEADER ASSEMBLY (POLARIZATION OPTIONS)	CIRCUIT SIZE	(A)	B	(C)	D	E	HOUSING COLOR
30700-4200	30700-4204	POLARIZATION OPTION #1	20	33.38	22.86	31.14	28.38	12.57	GRAY
30700-4201	30700-4205	POLARIZATION OPTION #2	20	33.38	22.86	31.14	28.38	15.57	BLACK
30700-4202	30700-4206	POLARIZATION OPTION #3	20	33.38	22.86	31.14	28.38	18.57	NATURAL (CREAM)
30700-4180	30700-4184	POLARIZATION OPTION #1	18	30.85	20.32	28.60	25.84	11.30	GRAY
30700-4181	30700-4185	POLARIZATION OPTION #2	18	30.85	20.32	28.60	25.84	14.30	BLACK
30700-4182	30700-4186	POLARIZATION OPTION #3	18	30.85	20.32	28.60	25.84	17.30	NATURAL (CREAM)
30700-4160	30700-4164	POLARIZATION OPTION #1	16	28.31	17.78	26.06	23.30	10.03	GRAY
30700-4161	30700-4165	POLARIZATION OPTION #2	16	28.31	17.78	26.06	23.30	13.03	BLACK
30700-4162	30700-4166	POLARIZATION OPTION #3	16	28.31	17.78	26.06	23.30	16.03	NATURAL (CREAM)
30700-4140	30700-4144	POLARIZATION OPTION #1	14	25.77	15.24	23.52	20.76	8.76	GRAY
30700-4141	30700-4145	POLARIZATION OPTION #2	14	25.77	15.24	23.52	20.76	11.76	BLACK
30700-4142	30700-4146	POLARIZATION OPTION #3	14	25.77	15.24	23.52	20.76	14.76	NATURAL (CREAM)
30700-4120	30700-4124	POLARIZATION OPTION #1	12	23.23	12.70	20.98	18.22	7.49	GRAY
30700-4121	30700-4125	POLARIZATION OPTION #2	12	23.23	12.70	20.98	18.22	10.49	BLACK
30700-4122	30700-4126	POLARIZATION OPTION #3	12	23.23	12.70	20.98	18.22	13.49	NATURAL (CREAM)
30700-4100	30700-4104	POLARIZATION OPTION #1	10	20.69	10.16	18.44	15.68	6.22	GRAY
30700-4101	30700-4105	POLARIZATION OPTION #2	10	20.69	10.16	18.44	15.68	9.22	BLACK
30700-4102	30700-4106	POLARIZATION OPTION #3	10	20.69	10.16	18.44	15.68	12.22	NATURAL (CREAM)
30700-4080	30700-4084	POLARIZATION OPTION #1	8	18.15	7.62	15.90	13.14	4.95	GRAY
30700-4081	30700-4085	POLARIZATION OPTION #2	8	18.15	7.62	15.90	13.14	7.95	BLACK
30700-4082	30700-4086	POLARIZATION OPTION #3	8	18.15	7.62	15.90	13.14	10.95	NATURAL (CREAM)
30700-4060	30700-4064	POLARIZATION OPTION #1	6	15.61	5.08	13.36	10.60	3.68	GRAY
30700-4061	30700-4065	POLARIZATION OPTION #2	6	15.61	5.08	13.36	10.60	6.68	BLACK
30700-4062	30700-4066	POLARIZATION OPTION #3	6	15.61	5.08	13.36	10.60	9.68	NATURAL (CREAM)

31390 SERIES DENOTES HDAC WITH SIDE STRAIN RELIEF WINGS AS SHOWN ON SHEET 3

PACKAGING		POLARIZATION OPTIONS & CIRCUIT SIZE		PRODUCT DIMENSIONS					
ASSEMBLY P/N TRAY PACKED	ASSEMBLY P/N TUBE PACKED	VERTICAL HEADER ASSEMBLY (POLARIZATION OPTIONS)	CIRCUIT SIZE	(A)	B	(C)	D	E	HOUSING COLOR
31390-4101	31390-4105	POLARIZATION OPTION #2	10	20.69	10.16	18.44	15.68	9.22	BLACK



PCB LAYOUT: COMPONENT SIDE
RECOMMENDED PCB THICKNESS: 1.57±0.17

PCB LAYOUT DIMENSIONS		
CIRCUIT SIZE (N)	F	G
20	28.38	14.19
18	25.84	12.92
16	23.30	11.65
14	20.76	10.38
12	18.22	9.11
10	15.68	7.84
8	13.14	6.57
6	10.60	5.30

SEE ECN# UAU2001-0258 EC NO: UAU2007-0542 DRWN: BICK01 2007/03/06 CHKD: 2007/03/06 APPR: SMARCEA007/03/07	QUALITY SYMBOLS	GENERAL TOLERANCES (UNLESS SPECIFIED) DIMENSION STYLE MM ONLY 4 PLACES ± --- ± --- 3 PLACES ± --- ± --- 2 PLACES ± 0.13 ± --- 1 PLACE ± 0.25 ± --- ANGULAR ± 1 ° DRAFT WHERE APPLICABLE MUST REMAIN WITHIN DIMENSIONS	SCALE 2:1	DESIGN UNITS METRIC	THIRD ANGLE PROJECTION	REVISE ON CAD ONLY	
	DESCRIPTION		TITLE	6-20 CIRCUIT VERTICAL HEADER ASSEMBLY			
	REV		DRAWN BY DATE RCARLSON 01/03/20 CHECKED BY DATE CKRISHNA 01/03/27 APPROVED BY DATE LGEIB 01/03/28		MOLEX INCORPORATED MATERIAL NO. DOCUMENT NO. SHEET NO. ENTER-PART SD-30700-420 2 OF 3		
	C1		THIS DRAWING CONTAINS INFORMATION THAT IS PROPRIETARY TO MOLEX INCORPORATED AND SHOULD NOT BE USED WITHOUT WRITTEN PERMISSION				

