

New Jersey Semi-Conductor Products, Inc.

20 STERN AVE.
 SPRINGFIELD, NEW JERSEY 07081
 U.S.A.

TELEPHONE: (973) 376-2922
 (212) 227-6005
 FAX: (973) 376-8960

PARAMETERS

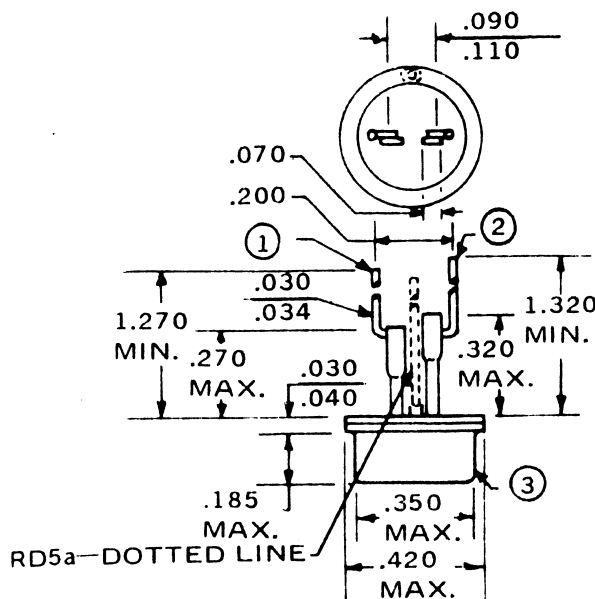
2N4166

SCR, V(DRM) = 600 V TO 699.9 V

Description: SCR, V(DRM) = 600 V to 699.9 V

Manufacturer.....	many
Mil/High-Rel? (Y/N).....	
V(drm) Max.....	600
It(stat) Max. (A).....	5.0
@Temp. (test) (°C).....	70#
Supp Curr. I(TSM).....	100¼
Firing Char-Igt Max.....	60m#
Firing Char-Vgt Max.....	2.5#
Id(off) Max. (A).....	2.0m
@Temp. (test) (°C).....	100#
I(h) Max. (A).....	60m#
V(T) Max.....	2.0
@It (A).....	15
Dv/Dt Worst Case.....	
t(switch) Off Typ. Time (S)...	
@It (test) (A).....	
t(switch) Off Typ. Time (S)...	
Oper. Temp (°C) Min.....	-40
Oper. Temp (°C) Max.....	100#
Pkg Style.....	Press-9
Surface Mounted (Y/N).....	N

Case Temperature # It(rms) # Measured at < 25°C
 ¼ For less than ½ cycle



NJ Semi-Conductors reserves the right to change test conditions, parameter limits and package dimensions without notice. Information furnished by NJ Semi-Conductors is believed to be both accurate and reliable at the time of going to press. However NJ Semi-Conductors assumes no responsibility for any errors or omissions discovered in its use. NJ Semi-Conductors encourages customers to verify that datasheets are current before placing orders.