

NOTES: UNLESS OTHERWISE SPECIFIED

1. INTERFACE COMPLIANT TO SMPTE 304 SPECIFICATION.

2. MATERIAL SPECIFICATIONS:

CONTACTS: COPPER ALLOY  
ALIGNMENT PINS: BRASS PER ASTM B16  
CRIMP SLEEVE: PHOS. BRONZE  
O-RINGS AND STRAIN RELIEF: SILICONE RUBBER  
ALL PLASTIC PARTS: 20% GLASS FILLED POLYPROPYLENE  
ALL OTHER METAL PARTS: 303 STAINLESS STEEL PER ASTM A582

3. FINISH SPECIFICATIONS:

STAINLESS STEEL PARTS: PASSIVATE  
CONTACTS: .000100 MIN GOLD PER ASTM B488 OVER  
.000080 MIN NICKEL PER AMS-QQN-290 (RoHS)  
CRIMP SLEEVE: .000100 MIN NICKEL PER AMS-QQ-N-290 OVER  
COPPER FLASH PER ASTM B734 (RoHS)

4. ELECTRICAL SPECIFICATIONS:

LOW VOLTAGE CONTACTS: 42 - 60 VAC, 1 AMP  
AUX ELECTRICAL CONTACTS: 600 VAC, 10 AMP

5. ENVIRONMENTAL:

OPERATING TEMPERATURE RATING: -40°C TO 75°C  
NON-OPERATING/STORAGE TEMPERATURE RATING: -40°C TO 85°C  
HUMIDITY: <95 RH (AT 40°C)

6. OPTICAL:

WAVELENGTH: 1100nm - 1350nm  
INSERTION LOSS: 0.3dB TYPICAL, 0.5dB MAX  
RETURN LOSS: > -45dB, -50dB TYPICAL

7. REPLACEMENT KITS:

CONTACT KIT: 7760-000-00709Z

8. CABLE PREPARATION AND STRIPPING PROCEDURE: CAP-E05.

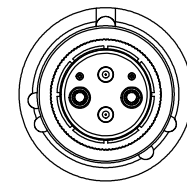
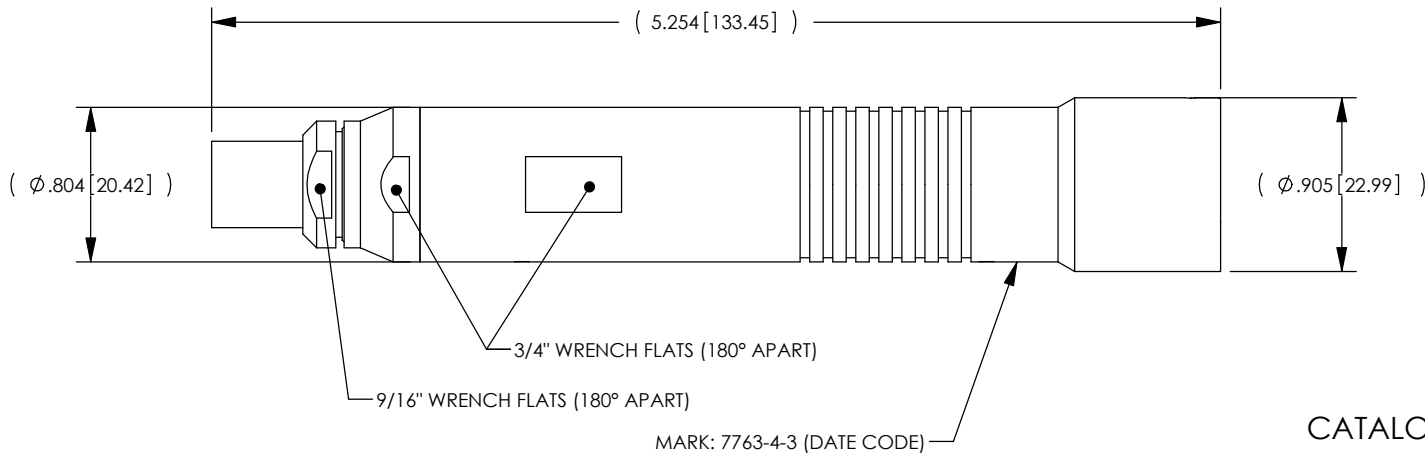
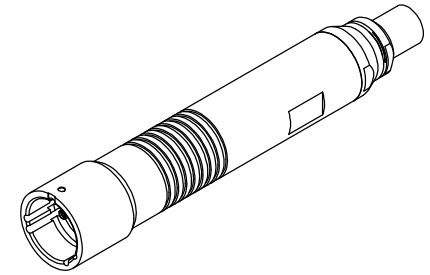
9. OPTIONAL ENVIRONMENTAL BOOT 7760-000-00705Z SOLD SEPARATELY.

10. RED LDPE DUST CAP INCLUDED (NOT SHOWN)

11. CRIMP TOOLING:

FOR FACTORY APPLICATION USE HAND TOOL KTH-1000 AND DIE KTH-2035  
FOR FIELD APPLICATION USE HAND TOOL KTH-5000 AND DIE KTH-5018

| REV | DESCRIPTION         | BY DATE         | APPD |
|-----|---------------------|-----------------|------|
| 05  | REVISED PER ER30231 | KFC<br>01/07/10 | XXX  |

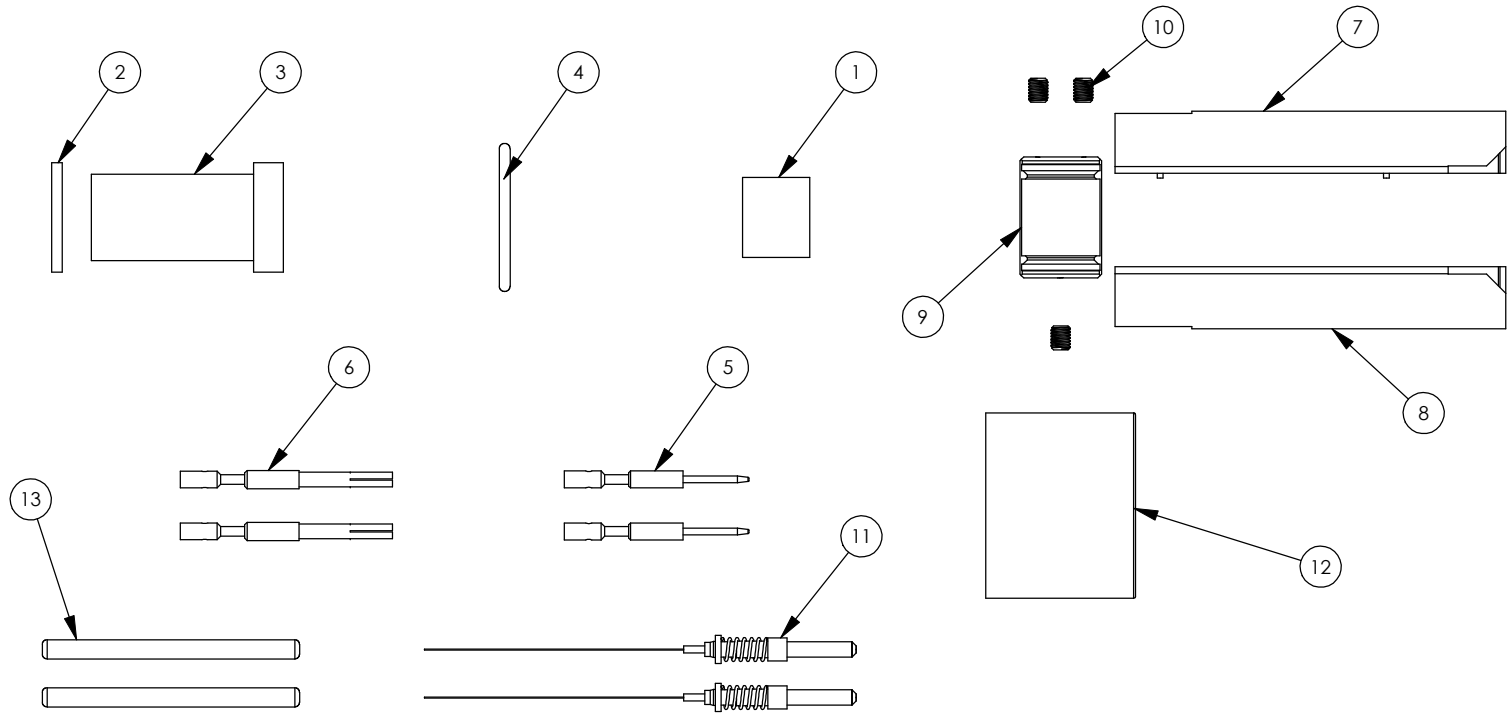


CATALOG P/N: 7763-4-3

|  |          |          |          |                              |            |   |         |           |
|--|----------|----------|----------|------------------------------|------------|---|---------|-----------|
| PER ASME Y14.5M-1994<br>UNLESS OTHERWISE SPECIFIED:<br>DIMENSIONS ARE IN INCHES [MM]<br>TOLERANCES:<br>DECIMAL: .XX [X.X] ± .01 [0.3]<br>.XXX [X.XX] ± .005 [0.13]<br>.XXXX [X.XXX] ± .XXXX<br>ANGLES: ± 2° SCALE: 1:1 |          |          |          | by WINCHESTER<br>ELECTRONICS |            | Winchester Electronics Corporation<br>62 Barnes Industrial Road North<br>Wallingford, Connecticut 06492 |         |           |
| CUSTOMER SALES DRAWING   |          |          |          | THIRD ANGLE                  |            | TRI-LOC, SMPTE 304, RECEPTACLE<br>PRE-POLISHED  |         |           |
| DRAWN  | DATE     | APPROVED | DATE     | <b>A</b>                     | SD7763-4-3 | SHT<br>1  | OF<br>2 | REV<br>05 |
| PSM  | 04/06/10 | WPM      | 04/07/10 |                              |            |   |         |           |
| APPROVED   | DATE     | APPROVED | DATE     |                              |            |   |         |           |
| JCF  | 04/07/10 | XXX      | XX/XX/XX |                              |            |   |         |           |

| REV | DESCRIPTION         | BY DATE         | APPD |
|-----|---------------------|-----------------|------|
| 05  | REVISED PER ER30231 | KFC<br>01/07/10 | XXX  |

# REPLACEMENT COMPONENT ORDERING NUMBERS



| 13       | VNFP01-900-34   | SPLICE PROTECTOR SLEEVE, 34MM       | 50              |
|----------|-----------------|-------------------------------------|-----------------|
| 12       | VNSC-748U       | RED LDPE DUST CAP                   | 25              |
| 11       | 7760-000-00711Z | FIBER OPTIC CONNECTOR STUB          | 2               |
| 10       | 78-0102U        | #4-40 HEX SET SCREW                 | 10              |
| 9        | 78-1012U        | STRENGTH MEMBER SUPPORT CLAMP       | 10              |
| 8        | 78-3011U        | JACK INSULATOR HALF SIDE "B"        | 25              |
| 7        | 78-3010U        | JACK INSULATOR HALF SIDE "A"        | 25              |
| 6        | 78-4204U        | JACK MALE CRIMP CONTACT             | 50              |
| 5        | 78-4203U        | JACK FEMALE CRIMP CONTACT           | 50              |
| 4        | 78-0705U        | REAR O-RING                         | 25              |
| 3        | 78-0701U        | REAR CABLE SEAL                     | 25              |
| 2        | 78-0301U        | WASHER FOR REAR CABLE SEAL          | 25              |
| 1        | 1-8156U         | CRIMP SLEEVE (CABLE SHIELD FERRULE) | 25              |
| ITEM NO. | PART NO.        | Description                         | PLATING CODE(S) |

CATALOG P/N: 7763-4-3

|  |  |  |                              |
|--|--|--|------------------------------|
| <small>PER ASME Y14.5M-1994<br/>UNLESS OTHERWISE SPECIFIED:<br/>DIMENSIONS ARE IN INCHES [MM]<br/>TOLERANCES:<br/>DECIMAL: .XX [X.X] ± .01 [0.3]<br/>.XXX [X.XX] ± .005 [0.13]<br/>.XXXX [X.XXX] ± .0005 [0.025]<br/>ANGLES: ± 2° SCALE: 1:1</small> |  | <br>by WINCHESTER Electronics Corporation<br>62 Barnes Industrial Road North<br>Wallingford, Connecticut 06492 |                              |
| <b>CUSTOMER SALES DRAWING</b>  |  | <b>TRI-LOC, SMPTE 304, RECEPTACLE PRE-POLISHED</b>   |                              |
| <small>DRAWN DATE</small><br>PSM 04/06/10  | <small>APPROVED DATE</small><br>WPM 04/07/10 | <small>THIRD ANGLE</small><br>   | <small>REV</small><br>05     |
| <small>APPROVED DATE</small><br>JCF 04/07/10   | <small>APPROVED DATE</small><br>XXX XX/XX/XX | <b>A</b>   | <small>SHT OF</small><br>2 2 |
|  |  | <b>SD7763-4-3</b>  | <small>REV</small><br>05     |