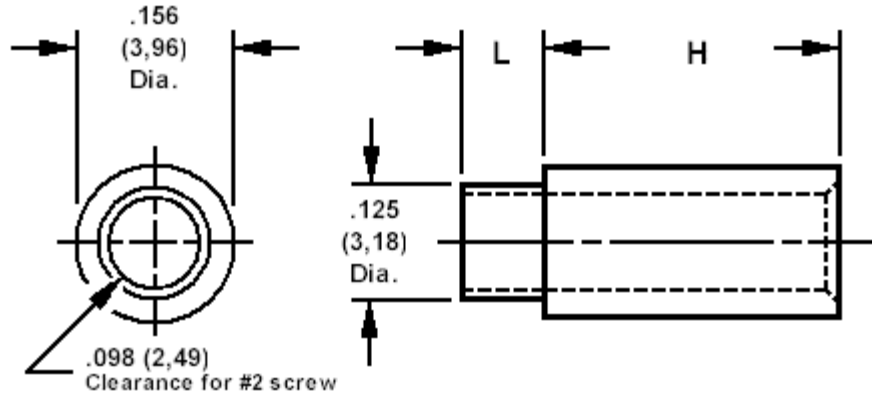


350-7406 Spacer/Stand-off, round, thru hole, swage mount



How to order code

350-7406-XX-YY-00

Basic Part No XX = H & L dimensions, YY = Plating Finish

DIMENSIONS (XX)								
Basic Part #	(XX)						H	Swage Anvil
350-7406	-01	-09	-17	-25	-33	-41	.125 (3,18)	A
	-02	-10	-18	-26	-34	-42	.188 (4,78)	A
	-03	-11	-19	-27	-35	-43	.250 (6,35)	B
	-04	-12	-20	-28	-36	-44	.375 (9,53)	B
	-05	-13	-21	-29	-37	-45	.500 (12,70)	C
	-06	-14	-22	-30	-38	-46	.625 (15,88)	C
	-07	-15	-23	-31	-39	-47	.750 (19,05)	D
	-08	-16	-24	-32	-40	-48	1.000 (25,40)	D
L	.062 (1,57)	.094 (2,39)	.125 (3,18)	.156 (3,96)	.219 (5,56)	.281 (7,14)		
For Board Thickness	.031 (0,79)	.062 (1,59)	.094 (2,38)	.125 (3,18)	.188 (4,76)	.250 (6,35)		

MATERIALS		
Component	Material	Finish (YY)
		-19
Spacer/Stand-Off	Aluminium	Clear Chromate

SWAGE TOOLING		
Recommended Swaging Tools:-		
Punch		435-6638-01-00-00
Anvil	A	435-6439-01-00-00
	B	435-6439-02-00-00
	C	435-6439-03-00-00
	D	435-6439-04-00-00