

*New Jersey Semi-Conductor Products, Inc.*

20 STERN AVE.  
 SPRINGFIELD, NEW JERSEY 07081  
 U.S.A.

TELEPHONE: (973) 376-2922  
 (212) 227-6005  
 FAX: (973) 376-8960

PARAMETERS

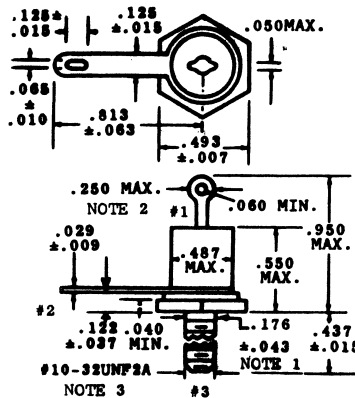
1N2577

SI RECTIFIER,  $10A < I(O)/I(F) \leq 20A$

Description: Si Rectifier,  $10A < I(O)/I(F) \leq 20A$

Manufacturer.....	
Mil/High-Rel? (Y/N).....	
I(out) (If AVG) Max.....	12
@Temp. (test) (°C).....	150#
VRRM.....	100
1-Cycle Surge Current (A).....	250
Vf Max.....	1.2
@If (test).....	20
@Temp. (test) for Vf).....	25#
Ir @25°C.....	8.0u
@Volts (test) (V).....	100
Ir @ Diff. Temp (A).....	1.0m
@Temp (test) (°C).....	150#
Oper. Temp (°C) Max.....	150#
Pkg Style.....	DO-10
Surface Mounted (Y/N).....	N

# Case Temperature     $\text{It(rms)}$



NOTES:

1. Complete threads to extend to within 2-1/2 threads of seating plane.
2. Angular orientation of terminals is undefined. Square or radius on ends of terminals is optional.
3. 10-32 UNF-2A. Maximum pitch diameter of plated threads shall be basic pitch diameter (.1697) reference (screw thread standards for federal services 1957).