

**SINGLE-PHASE GLASS PASSIVATED
MINI SUPER FAST SURFACE MOUNT BRIDGE RECTIFIER**
VOLTAGE RANGE 50 to 200 Volts CURRENT 0.5 Ampere

FEATURES

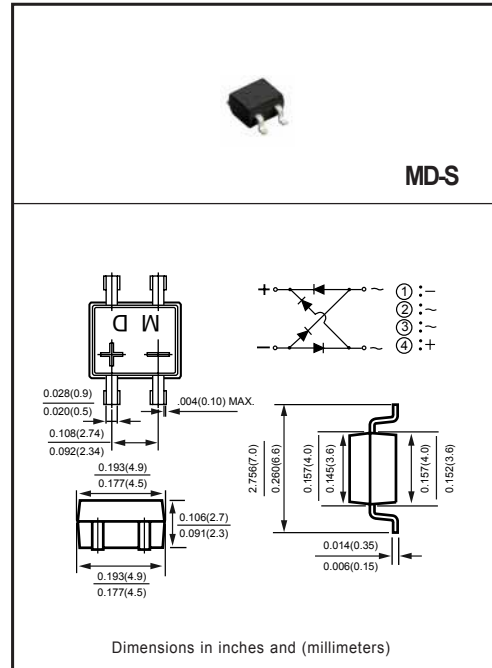
- * Surge overload rating - 20 amperes peak
- * Ideal for printed circuit board
- * Reliable low cost construction utilizing molded
- * Glass passivated device
- * Polarity symbols molded on body
- * Mounting position: Any
- * Weight: 0.5 gram

MECHANICAL DATA

- * Epoxy: Device has UL flammability classification 94V-O

MAXIMUM RATINGS AND ELECTRICAL CHARACTERISTICS

Ratings at 25 °C ambient temperature unless otherwise specified.
Single phase, half wave, 60 Hz, resistive or inductive load.
For capacitive load, derate current by 20%.



MAXIMUM RATINGS (At $T_A = 25^\circ\text{C}$ unless otherwise noted)

RATINGS	SYMBOL	EMD1S	EMD2S	EMD3S	EMD4S	UNITS
Maximum Recurrent Peak Reverse Voltage	V_{RRM}	50	100	150	200	Volts
Maximum RMS Bridge Input Voltage	V_{RMS}	35	70	105	140	Volts
Maximum DC Blocking Voltage	V_{DC}	50	100	150	200	Volts
Maximum Average Forward Output Current at $T_A = 30^\circ\text{C}$ -on glass-epoxy P.C.B. (Note 2) -on aluminum substrate (Note 3)	I_O	0.5 0.8				Amps
Peak Forward Surge Current 8.3 ms single half sine-wave superimposed on rated load (JEDEC method)	I_{FSM}	20				Amps
Typical Junction Capacitance (Note 4)	C_J	15				pF
Operating and Storage Temperature Range	T_J, T_{STG}	-55 to + 150				$^\circ\text{C}$

ELECTRICAL CHARACTERISTICS (At $T_A = 25^\circ\text{C}$ unless otherwise noted)

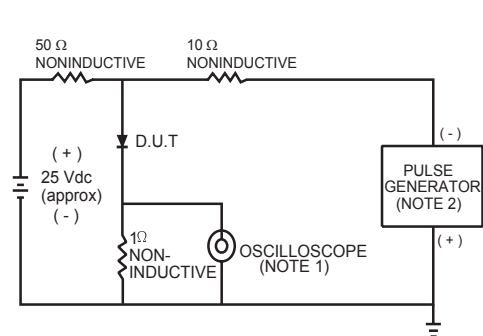
CHARACTERISTICS	SYMBOL	EMD1S	EMD2S	EMD3S	EMD4S	UNITS
Maximum Forward Voltage Drop per Bridge Element at 0.5A DC	V_F	1.05				Volts
Maximum Reverse Current at Rated	I_R	@ $T_A = 25^\circ\text{C}$ 10				μAmps
DC Blocking Voltage per element		@ $T_A = 125^\circ\text{C}$ 0.5				mAmps
Maximum Reverse Recovery Time (Note 5)	t_{rr}	50				nS

Note: 1. "Fully ROHS compliant", "100% Sn plating(Pb-free).

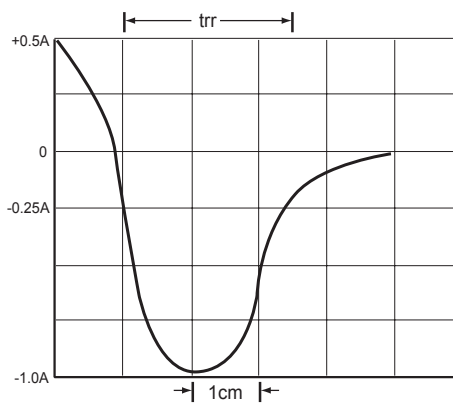
2. On glass-epoxy P.C.B. mounted on 0.05 X 0.05" (1.3 X 1.3mm) pads.
3. On aluminum substrate P.C.B. with an area of 0.8 X 0.8 X 0.25" (20 X 20 X 6.4mm) mounted on 0.05 X 0.05" (1.27 X 1.27mm) solder pad.
4. Measure at 1MHz and applied reverse voltage of 4.0 volts.
5. Test Condition : $I_F=0.5\text{A}$, $I_R= -1.0\text{A}$, $I_{RR}= -0.25\text{A}$.

2007-08

RATING AND CHARACTERISTICS CURVES (EMD1S THRU EMD4S)



- NOTES: 1 Rise Time = 7ns max. Input Impedance = 1 megohm. 22pF.
2 Rise Time = 10ns max. Source Impedance = 50 ohms.



SET TIME BASE FOR 20/1 ns/cm

FIG.1 TEST CIRCUIT DIAGRAM AND REVERSE RECOVERY TIME CHARACTERISTIC

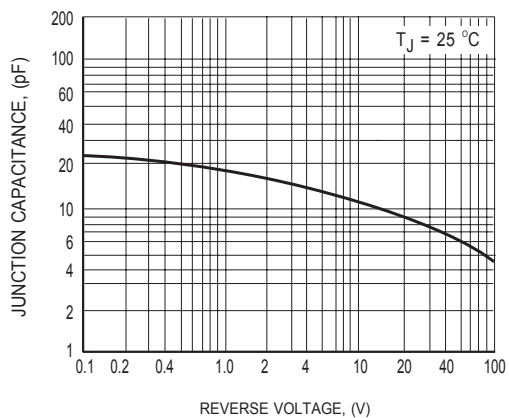


FIG.2 TYPICAL JUNCTION CAPACITANCE

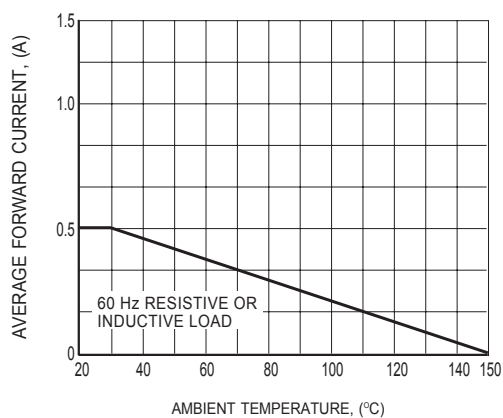


FIG.3 TYPICAL FORWARD CURRENT DERATING CURVE

RATING AND CHARACTERISTICS CURVES (EMD1S THRU EMD4S)

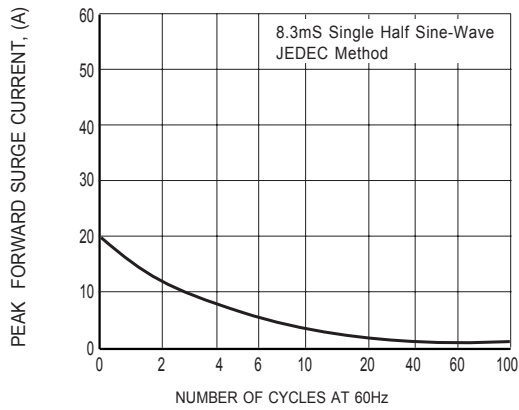


FIG. 4 MAXIMUM NON-REPETITIVE FORWARD SURGE CURRENT

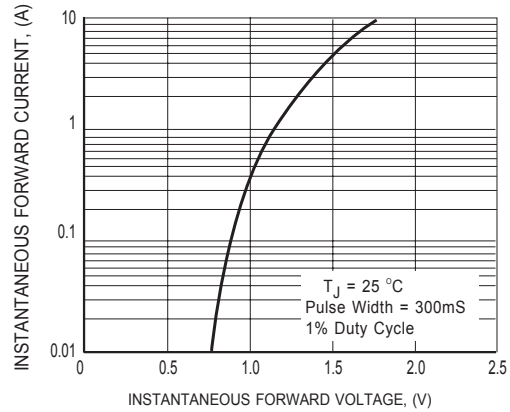


FIG.5 TYPICAL INSTANTANEOUS FORWARD CHARACTERISTICS

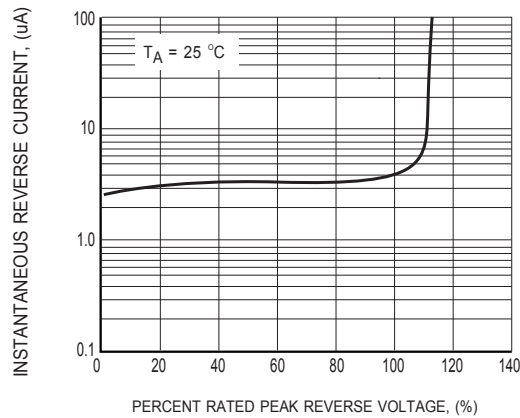
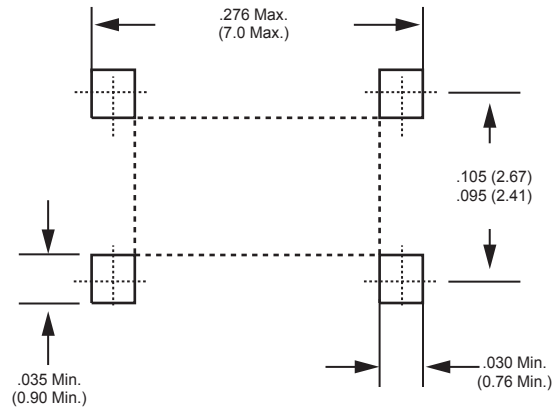


FIG.6 TYPICAL REVERSE CHARACTERISTICS

Mounting Pad Layout



Dimensions in inches and (millimeters)

DISCLAIMER NOTICE

Rectron Inc reserves the right to make changes without notice to any product specification herein, to make corrections, modifications, enhancements or other changes. Rectron Inc or anyone on its behalf assumes no responsibility or liability for any errors or inaccuracies. Data sheet specifications and its information contained are intended to provide a product description only. "Typical" parameters which may be included on RECTRON data sheets and/ or specifications can and do vary in different applications and actual performance may vary over time. Rectron Inc does not assume any liability arising out of the application or use of any product or circuit.

Rectron products are not designed, intended or authorized for use in medical, life-saving implant or other applications intended for life-sustaining or other related applications where a failure or malfunction of component or circuitry may directly or indirectly cause injury or threaten a life without expressed written approval of Rectron Inc. Customers using or selling Rectron components for use in such applications do so at their own risk and shall agree to fully indemnify Rectron Inc and its subsidiaries harmless against all claims, damages and expenditures.