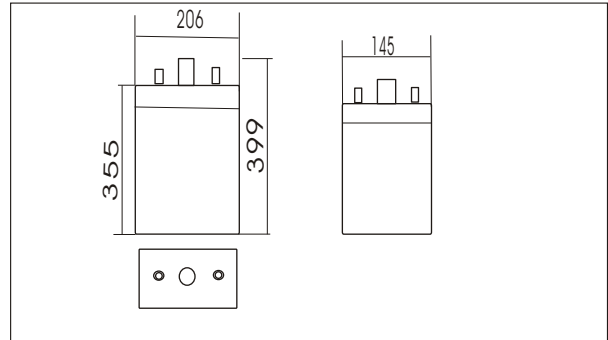




# 60PzV300 (2V300Ah)



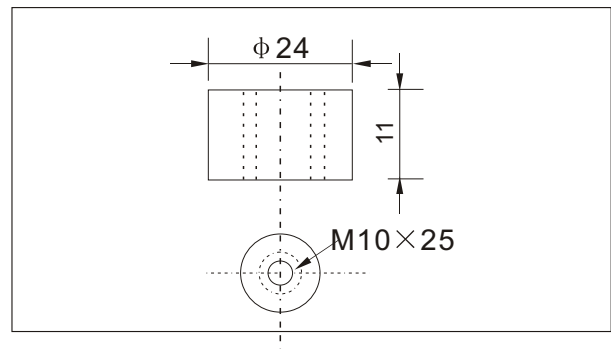
### Outer dimensions (mm)



### Specifications

Nominal Voltage	2 V	
Rated capacity (10 hour rate)	300 Ah	
Dimensions	Total Height	399 Mm ( 15.7 Inches)
	Height	355mm (13.98inches)
	Length	145 mm (5.71 inches)
	Width	206 mm (8.11inches)
Weight Approx	27.0Kg (59.4lbs)	

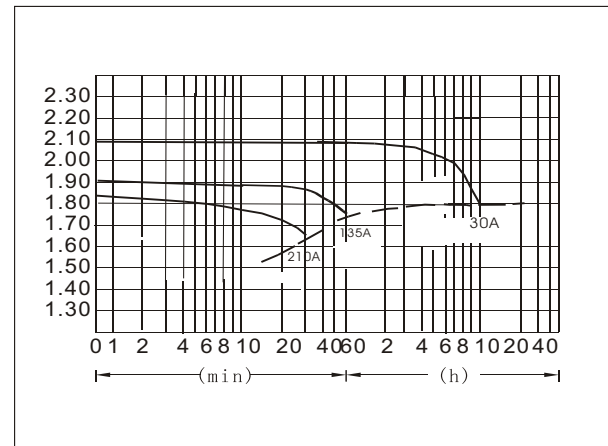
### Terminal Type (mm)



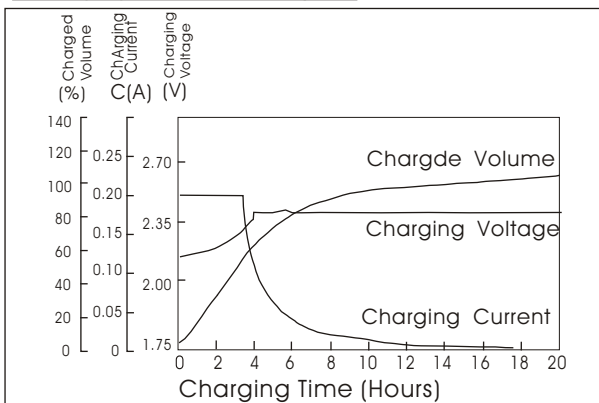
### Characteristics

Capacity 25°C(77°F)	10 hour rate(30 A)	300Ah
	1 hour rate(135A)	135 Ah
	0.5 hour rate(210A)	105Ah
Capacity affected by Temperature (10hour rate)	40°C(104°F)	102%
	25°C(77°F)	100%
	0°C(32°F)	85%
	-15°C(5°F)	65%
Self-Discharge at 25°C(77°F)	Capacity after 3 month storage	91%
	Capacity after 6 month storage	82%
	Capacity after 12 month storage	64%
Terminal quantity	2	
Charge (constant Voltage)	Initial Charging Current less than 60.0A Voltage 2.25-2.40V	

### Discharge Curves 25°C(77°F)



### Charging characteristics(25°C)



### Cycling Curves

