

New Jersey Semi-Conductor Products, Inc.

20 STERN AVE.
 SPRINGFIELD, NEW JERSEY 07081
 U.S.A.

TELEPHONE: (201) 376-2922
 (212) 227-6005
 FAX: (201) 376-8960

PARAMETERS

1N200AR
 SI RECTIFIER, I(O)/I(F) s 100mA

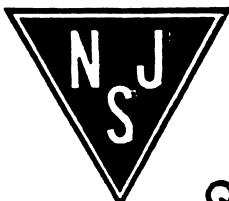
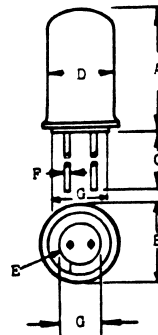
Description: Si Rectifier, I(O)/I(F) s 100mA

Manufacturer.....
 Mil/High-Rel? (Y/N).....
 I(out) (If AVG) Max..... 85m
 @Temp. (test) (x C).....
 VRRM..... 6.8
 1-Cycle Surge Current (A).....
 Vf Max..... 1.0
 @If (test)..... 50m
 @Temp. (test) for Vf).....
 Ir @25xC..... .50u
 @Volts (test) (V)..... 6.8
 Ir @ Diff. Temp (A)..... 5.0u
 @Temp (test) (x C)..... 100
 Oper. Temp (x C) Max..... 150
 Pkg Style..... Can
 Surface Mounted (Y/N)..... N

6.8 volts Double Anode

C1

	A	B	C	D	E	F	G
C1	.350	.210	1.128	.180	.045	.019	NA
	.370	.230		.200	.055	.021	
C1a	.334	.248	1.38		.070	.018	NA
C1a	.310	.255	1.30	.228	.100	.018	NA
C1b	.351	.284	1.48	.204	.083	.017	NA
	MAX	MAX	MIN	MAX			
C1c	.418	.220	1.48	.220	.083	.017	NA
	MAX	.232	MIN	.232			
C1d	.388	.252	1.57		.083	.017	NA
			MIN				
C1e	.430	.270	1.20	.270	.083	.017	NA
			MIN				
C1f	.433	.282	1.28	.238	.058	.020	.138
C1g	.408	.282	1.18	.238	.071	.020	.157
C1h	.437	.217	1.082			.020	



Quality Semi-Conductors