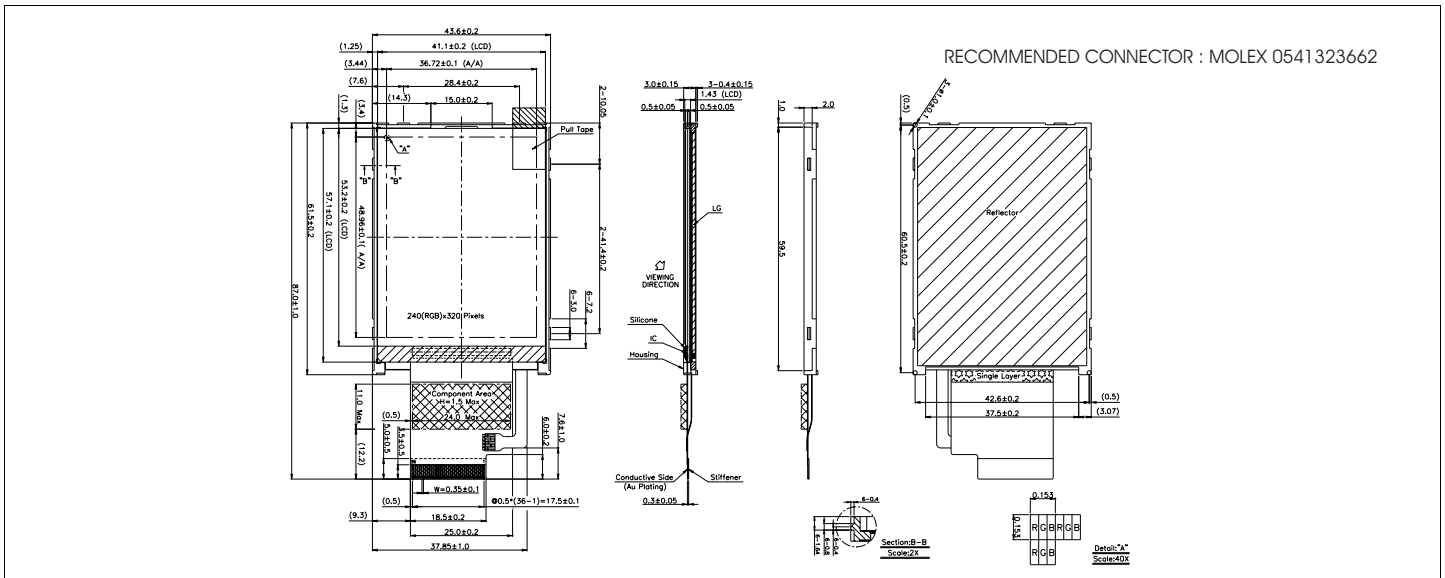


HDA240A

Dimensional Drawing

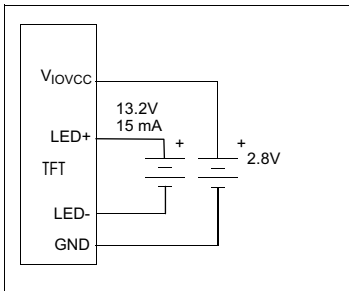
2.4" ,240 X 320 (TFT) Color Graphics ,LED(White) Backlight



Features
 Viewing Angle(U/D/R/L).....60/45/60/60 degrees
 High Contrast.....300:1
 Fast Response Time30 ms
 Built-in DC-DC Converter
 Built-in Controller.....ILI9325

Physical Data
 Module Size.....43.6W x87.0H x3.0T mm
 Viewing Area Size.....41.1W x53.2 H mm
 Pitch Size.....0.153W x 0.153H mm
 Weight.....11.0g

Power Supply



Absolute Maximum Ratings

PARAMETER	SYMBOL	MIN	MAX	UNIT
SUPPLY VOLTAGE	V_{IOCC}	-0.3	4.6	V
BACKLIGHT FORWARD CURRENT	I_{FI}	~	20	mA
INPUT VOLTAGE	V_{IN}	-0.3	V_{CC}	V
OPERATING TEMPERATURE	T_{OP}	-20	70	°C
STORAGE TEMPERATURE	T_{STG}	-30	80	°C

Electrical Characteristics (VDD=2.8±0.115V 25°C)

PARAMETER	SYM	CONDITION	MIN	TYP	MAX	UNIT
OPERATING VOLTAGE	V_{IOVCC}	-	-	2.8	-	V
INPUT HIGH VOLTAGE	V_{IH}	-	$0.8V_{CC}$	-	V_{CC}	V
INPUT LOW VOLTAGE	V_{IL}	-	-0.3	-	0.2V	V
OPERATING CURRENT	I_{DD}	-	-	5.5	7.7	mA
LED FORWARD VOLTAGE	V_F	at $I_f = 15 \text{ mA}$	-	13.2	-	V
LED FORWARD CURRENT	I_F	at $V_f = 13.2V$	-	15	-	mA
BRIGHTNESS	L	Average	-	135	-	cd/m ²

Pin Connections

PIN NO.	SYMBOL	FUNCTION
1	LED-A	I LED Anode
2	LED-A	I LED Anode
3	LED-K	I LED Cathode
4	LED-K	I LED Cathode
5	NC	- No Connection
6	VSS	I Ground
7	NC	- No Connection
8	NC	- No Connection
9-11	NC	- No Connection
12	nRESET	L Reset Input
13	D17	H/L
14	D16	H/L
15	D15	H/L
16	D14	H/L
17	D13	H/L
18	D12	H/L
19	D11	H/L
20	D10	H/L
21	D09	H/L
22	D08	H/L
23	D07	H/L
24	D06	H/L
25	D05	H/L
26	D04	H/L
27	D03	H/L
28	D02	H/L
29	D01	H/L
30	D00	H/L
31	nRD	Li Read Strobe Input
32	nWR/SCL	L or H/L Write Strobe Input or Clock for SPI Mode
33	RS	H/L Control-Index Select Input
34	nCS	L Chip Select Input
35	VCI	I Power Supply Voltage (Analog)
36	VCC	I Power Supply Voltage