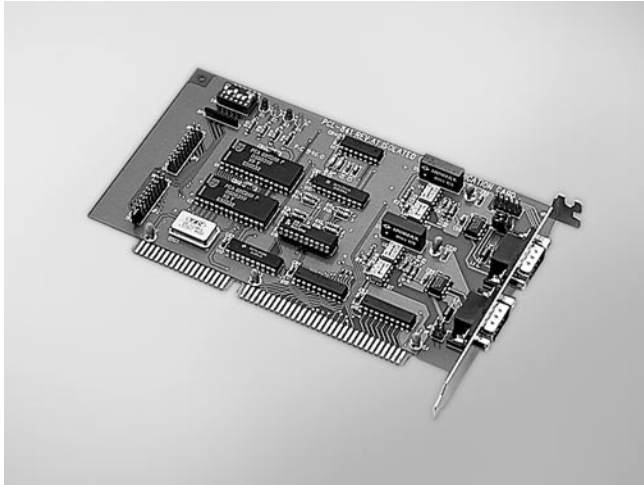


# PCL-841

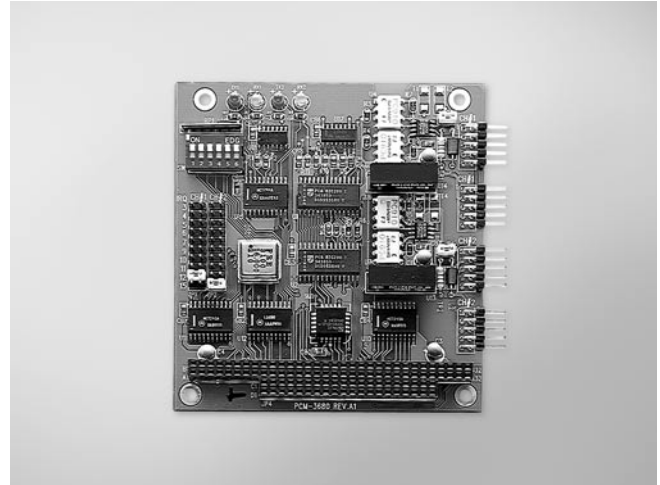
# PCM-3680

## 2-port CAN-bus ISA Card with Isolation Protection

## 2-port CAN-bus PC/104 Module with Isolation Protection



PCL-841



PCM-3680



### Features

- Operates two separate CAN networks at the same time
- High speed transmission up to 500 kbps
- 16 MHz CAN controller frequency
- Optical isolation protection of 1000 V<sub>DC</sub> ensures system reliability
- Wide IRQ selection for each port: IRQ 3, 4, 5, 6, 7, 9, 10, 11, 12, 15
- LEDs indicate Transmit/Receive status on each port
- Direct memory mapping enables very fast access to the CAN controllers
- Windows® DLL library and examples included
- Supports Windows 2000/XP/Vista and Linux

### Specifications

#### General

- Card Interface: ISA
- Certifications: CE
- Connectors: 2 x DB9-M
- Dimensions: 185 x 100 mm (7.3" x 3.9") (PCL-841)
- Ports: 2
- Power Consumption: +5 V @ 400 mA typical, 950 mA max.
- Weight (Gross): 0.6 kg (1.3 lb)

#### Communications

- CAN Controller: SJA-1000
- CAN Transceiver: 82C250
- Protocol: CAN2.0 A/B
- IRQ: 3, 4, 5, 6, 7, 9, 10, 11, 12 or 15
- Memory Segment Base Address: From C800H to EF00H
- Signal Support: CAN\_H, CAN\_L

#### Protection

- Isolation Protection: 1,000 V<sub>DC</sub>

#### Environment

- Operating Temperature: 0 ~ 50° C (32 ~ 122° F)

### Ordering Information

- PCL-841: Dual-port Isolated CAN-bus Interface Card

### Features

- Operates two separate CAN networks at the same time
- High speed transmission up to 500 kbps
- 16 MHz CAN controller frequency
- Optical isolation protection of 1000 V<sub>DC</sub> ensures system reliability
- Wide IRQ selection for each port: IRQ 3, 4, 5, 6, 7, 9, 10, 11, 12, 15
- LEDs indicate Transmit/Receive status on each port
- Direct memory mapping enables very fast access to the CAN controllers
- Windows DLL library and examples included
- Supports Windows 2000/XP/Vista and Linux

### Specifications

#### General

- Card Interface: PC/104
- Certifications: CE
- Connectors: 2 x DB9-M w/cable
- Dimensions: 90 x 96 mm (3.6" x 3.8")
- Ports: 2
- Power Consumption: +5 V @ 400 mA

#### Communications

- CAN Controller: SJA-1000
- CAN Transceiver: 82C250
- Protocol: CAN2.0 A/B
- IRQ: 3, 4, 5, 6, 7, 9, 10, 11, 12 or 15
- Memory Segment Base Address: From C800H to EF00H
- Signal Support: CAN\_H, CAN\_L

#### Protection

- Isolation Protection: 1,000 V<sub>DC</sub>

#### Environment

- Operating Temperature: 0 ~ 65° C (32 ~ 122° F)

### Ordering Information

- PCM-3680: Dual-port Isolated CAN Interface Module