

10

9

8

7

6

5

4

3

2

1

NOTES :

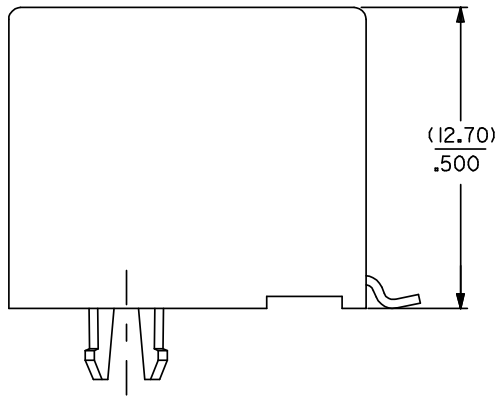
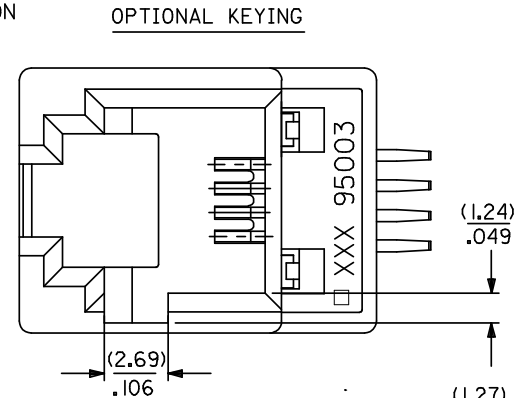
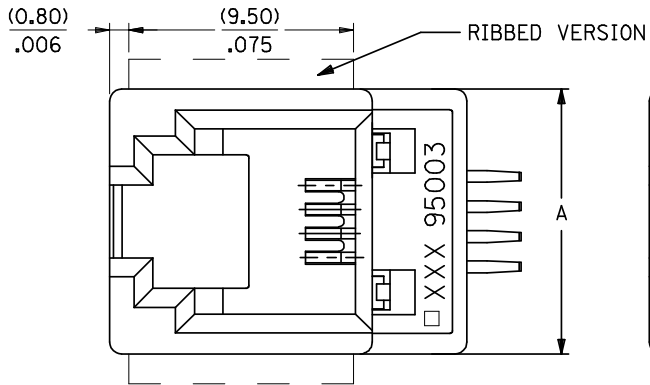
1- MATERIAL:

-HOUSING: L C P FIBER GLASS FILLED UL 94-V0
COLOR BLACK

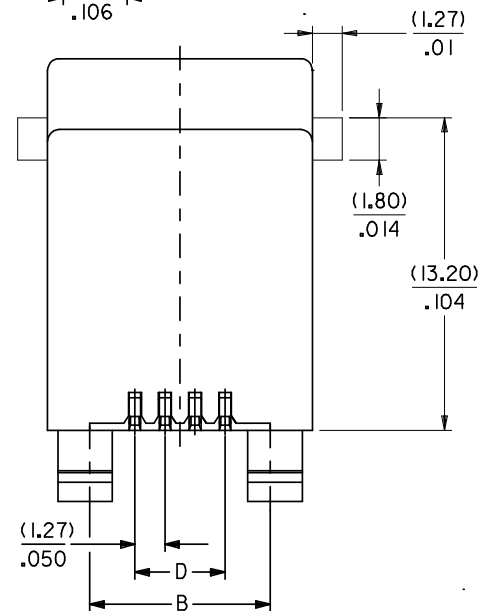
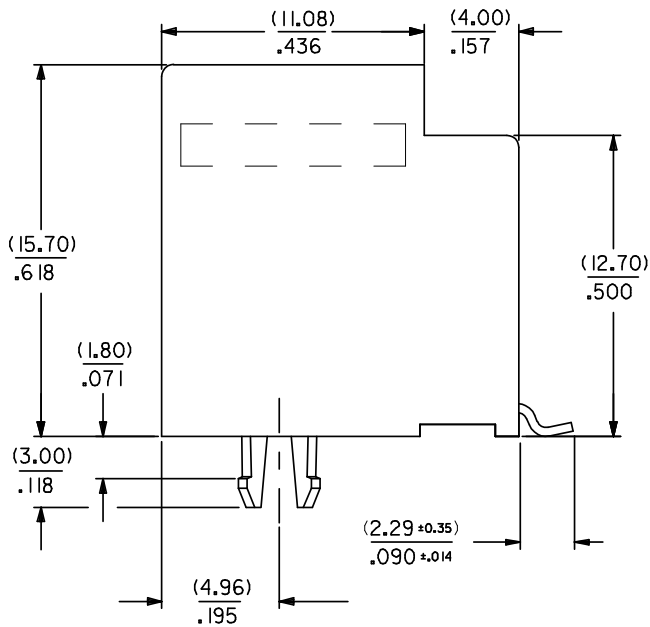
2- APPLICATION SPECIFICATION: AS-85513-001 (SMT)

3- SEE OTHER NOTES SHEET 1.

4- COPLANARITY OF SIGNAL TAILS 0.1mm MAX
RELEVANT TO EACH OTHER.



SHORT VERSION



DIM.	TYPE	POS. 4	POS. 6		POS. 8
		4 CKTS.	4 CKTS.	6 CKTS.	8 CKTS.
A		(11.18) / .440	(13.21) / .520	(13.21) / .520	(15.24) / .600
B		(7.62) / .300	(10.16) / .400	(10.16) / .400	(11.43) / .450
D		(3.81) / .150	(3.81) / .150	(6.35) / .250	(8.89) / .350

ADDED NOTE 4. EC NO: E2008-0585 DRWINGBYRNES 2008/04/22 CHKD: 2008/04/22 APPR: EDMAHONY 2008/04/22	QUALITY SYMBOLS	GENERAL TOLERANCES (UNLESS SPECIFIED)	DIMENSION STYLE	SCALE	DESIGN UNITS	THIRD ANGLE PROJECTION															
	$\nabla=0$ $\nabla=0$	<table border="1"> <tr> <th></th> <th>mm</th> <th>INCH</th> </tr> <tr> <td>4 PLACES</td> <td>± ---</td> <td>± ---</td> </tr> <tr> <td>3 PLACES</td> <td>± ---</td> <td>± .006</td> </tr> <tr> <td>2 PLACES</td> <td>± 0.15</td> <td>± .010</td> </tr> <tr> <td>1 PLACE</td> <td>± 0.25</td> <td>± ---</td> </tr> </table>		mm	INCH	4 PLACES	± ---	± ---	3 PLACES	± ---	± .006	2 PLACES	± 0.15	± .010	1 PLACE	± 0.25	± ---	MM/IN	5:1	METRIC	
		mm	INCH																		
	4 PLACES	± ---	± ---																		
3 PLACES	± ---	± .006																			
2 PLACES	± 0.15	± .010																			
1 PLACE	± 0.25	± ---																			
DESCRIPTION	DRAFT WHERE APPLICABLE MUST REMAIN WITHIN DIMENSIONS	DRAWN BY: TMART IN CHECKED BY: FCARABETTA APPROVED BY: KNOLLER DATE: 2005/06/19	TITLE: LOW PROFILE T/E JACK (SMT VERSION) MATERIAL NO.: SEE SHT. 4, 5 DOCUMENT NO.: SD-95503-003																		

DRAWN BY: TMART IN CHECKED BY: FCARABETTA APPROVED BY: KNOLLER DATE: 2005/06/19	TITLE: LOW PROFILE T/E JACK (SMT VERSION) MATERIAL NO.: SEE SHT. 4, 5 DOCUMENT NO.: SD-95503-003	SHEET NO.: 2 OF 5
--	--	-------------------

Molex INCORPORATED THIS DRAWING CONTAINS INFORMATION THAT IS PROPRIETARY TO MOLEX INCORPORATED AND SHOULD NOT BE USED WITHOUT WRITTEN PERMISSION

9

8

7

6

5

4

3

2

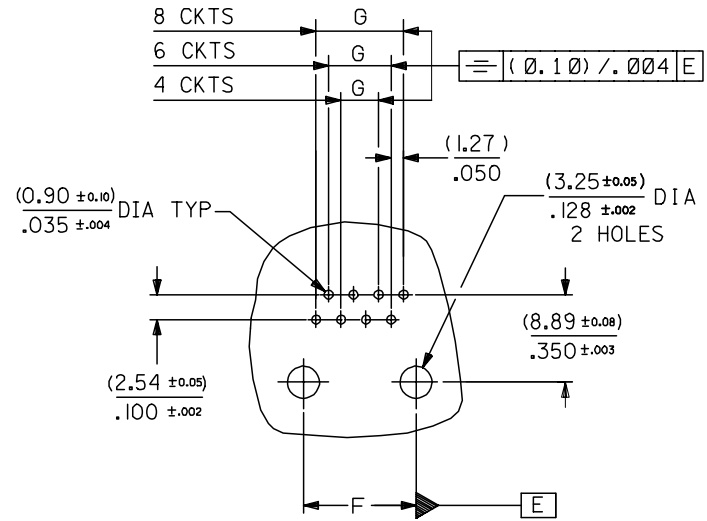
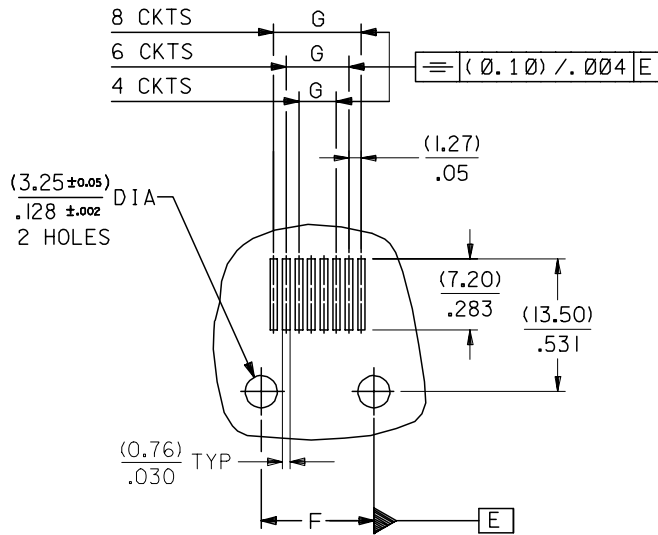
1

TYPE DIM.	POS. 4	POS. 6		POS. 8
	4 CKTS.	4 CKTS.	6 CKTS.	8 CKTS.
F $(\pm 0.05)/\pm .002$	(7.62) / .300	(10.16) / .400	(10.16) / .400	(11.43) / .450
G $(\pm 0.05)/\pm .002$	(3.81) / .150	(3.81) / .150	(6.35) / .250	(8.89) / .350

P.C.B. MOUNTING PATTERNS - SEE FROM COMPONENT SIDE

FOR SMT JACK (SURFACE MOUNT)

FOR STANDARD JACK (THROUGH HOLE)



REV	DESCRIPTION
C	CHANGED TABLE
	EC NO: E2008-0267
	DRWN:DBYRNES 2007/11/27
	CHKD: 2007/11/28
	APPR:EDMAHONY 2007/11/28

QUALITY SYMBOLS	DESCRIPTION
▽=0	
△=0	

GENERAL TOLERANCES (UNLESS SPECIFIED)	
mm	INCH
4 PLACES ± ---	± ---
3 PLACES ± ---	± .006
2 PLACES ± 0.15	± .010
1 PLACE ± 0.25	± ---
ANGULAR ± .5 °	

DIMENSION STYLE	
MM/IN	DATE
DRAWN BY	T MARTIN
CHECKED BY	F CARABETTA
APPROVED BY	KNOLLER

SCALE	DESIGN UNITS	THIRD ANGLE PROJECTION
2:1	METRIC	☉
TITLE: LOW PROFILE T/E JACK		
MATERIAL NO. MOLEX INCORPORATED		
DOCUMENT NO. SD-95503-003		SHEET NO. 3 OF 5
DRAFT WHERE APPLICABLE MUST REMAIN WITHIN DIMENSIONS		
SIZE A3 THIS DRAWING CONTAINS INFORMATION THAT IS PROPRIETARY TO MOLEX INCORPORATED AND SHOULD NOT BE USED WITHOUT WRITTEN PERMISSION		

