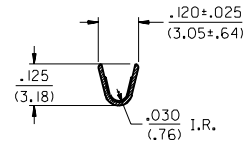


SECTION A-A



SECTION B-B

- NOTES:
- △ THESE TERMINALS ARE FOR USE WITH THE 1461-\* SERIES HOUSINGS.
  - THE -1\* GROUP CRIMPS #18 TO #22 AWG WIRE WITH INSULATION DIAMETERS OF .061/(1.55) TO .102/(2.59).
  - THE -2\* GROUP CRIMPS #14 TO #16 AWG WIRE WITH AN INSULATION DIAMETER OF .140/(3.56) MAX.
  - △ THESE TERMINALS ARE PRODUCED ONLY FOR EXPORT TO JAPAN.
  - △ CARRIER CUT OFF DIMENSION: .007/(.18) MAX.
  - △ PRODUCT SPECIFICATION PS 50-36 APPLIES.
  - △ A 4° ANGLE IS ALLOWED.

MATERIAL:  
260 BRASS

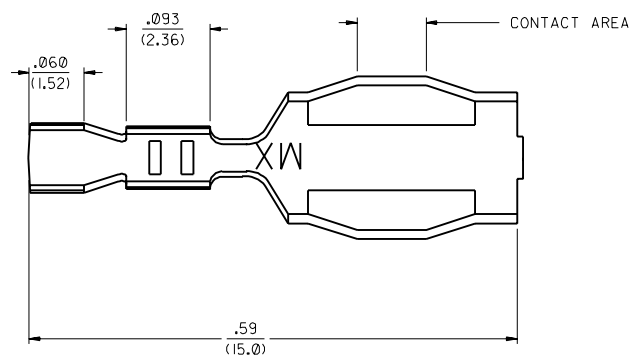
PART NO.	ENG. NO.	DIM. C	DIM. D	DIM. E	FORM	PLATING PER SD5-
05-02-0047	1457-1	.145±.025	.135	.045	CHAIN	88-P901
05-02-0048	1457-1L	.145±.025	(3.68±.64)	(1.14)	LOOSE	TIN
05-02-0056	1457-1G	.145±.025	.135	.045	CHAIN	88-P550
05-02-0057	1457-1GL	(3.68±.64)	(3.43)	(1.14)	LOOSE	SEL. GOLD
05-02-0058	1457-1(P555)	.145±.025	.135	.045	CHAIN	88-P555
	1457-1(P555)L	(3.68±.64)	(3.43)	(1.14)	LOOSE	SEL. GOLD
05-02-0049	1457-2	.21±.03	.185±.015	.060	CHAIN	88-P901
05-02-0050	1457-2L	(5.3±.8)	(4.70±.38)	(1.52)	LOOSE	TIN

3	S
2	S
1	S
MFG. SH. REV.	

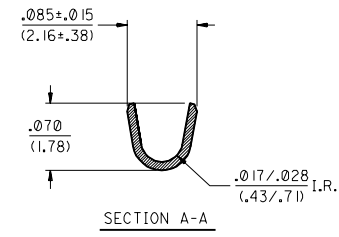
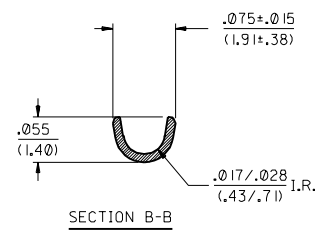
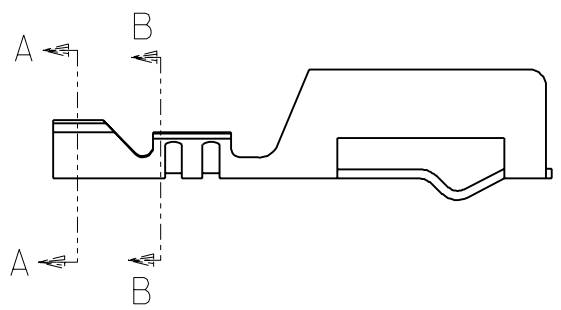
S	REV ADD -6* ECR U60463 12-19-95 SAMIEC	DIMENSIONS SHOWN METRIC ( ) INCH UNLESS OTHERWISE SPECIFIED TOLERANCES: ANGULAR ± .5°		▽ = 0 ▼ = 0 REVISE ONLY ON CAD SYSTEM	
	RI	ADDED OPTION ECN #13,0016 01-14-93 RHR	INCH METRIC 3 PLACE ±.010 --- 2 PLACE ±.014 ±0.25 1 PLACE --- ±0.35	TITLE TERMINAL, COMMONING, CRIMP (1457-1* AND 1457-2*)	
R	ADD OPTION & REDRAW ECN #10538 02-11-91 A.GUZIK	DRAFT WHERE APPLICABLE MUST REMAIN WITHIN DIMENSIONS		PART NO. MOLEX INCORPORATED SHEET NO. DATE L15LEJLL 60532 U.S.A. 1 OF 3 02/11/91	
LTR.	REVISIONS	LTR.	REVISIONS	DRWG. NO. SD-1457-*	SEE CHART
APP'D BY GWF		CHK'D BY RHR		FILE NAME SD1457X1	THIS DRAWING CONTAINS INFORMATION THAT IS PROPRIETARY TO MOLEX INC. AND SHOULD NOT BE USED WITHOUT WRITTEN PERMISSION.
SCALE 4 : 1		DIV. CP		SIZE C	

13 12 11 10 9 8 7 6 1457 4 3 2 1

J  
I  
H  
G  
F  
E  
D  
C  
B  
A



NOTES:  
 1. FOR ALL OTHER DIMENSIONS SEE SHEET 1.  
 2. THE -6\* GROUP CRIMPS #24 TO #30 AWG WIRE WITH AN INSULATION DIAMETER OF .050/(1.27)



PART NO.	ENG. NO.	FORM	PLATING
05-02-0091	1457-6	CHAIN	TIN PER
05-02-0092	1457-6L	LOOSE	SDES-88

SEE SHEET 1	DIMENSIONS SHOWN (METRIC) INCH UNLESS OTHERWISE SPECIFIED TOLERANCES ANGLES ARE ± UNLESS SHOWN OTHERWISE	▽ = 0	▼ = 0	REVISE ONLY ON CAD SYSTEM
SEE SHEET 1		TITLE		
SEE SHEET 1		TERMINAL, COMMONING, CRIMP		
SEE SHEET 1		(1457-6*)		
S SEE SHEET 1		MOLEX INCORPORATED	SHEET NO. 3	DATE 02/11/91
R1 SEE SHEET 1		SEE CHART	SD-1457-*	
R SEE SHEET 1		FILE NAME SD1457X3	THIS DRAWING CONTAINS INFORMATION THAT IS PROPRIETARY TO MOLEX INC. AND SHOULD NOT BE USED WITHOUT WRITTEN PERMISSION	
LTR. REVISIONS	LTR. REVISIONS	DRWG. BY AFG	CHK'D. BY RHR	DIV. SIZE
		APP'D. BY GWF	SCALE 4:1	CP C

13 12 11 10 9 8 7 6 5 4 3 2 1