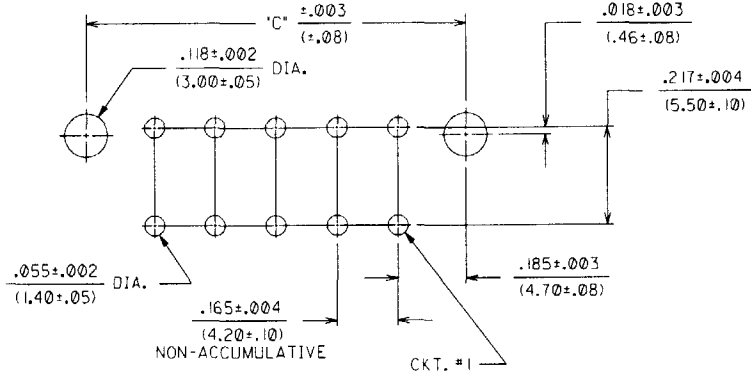
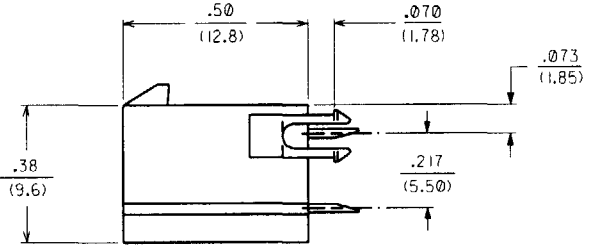
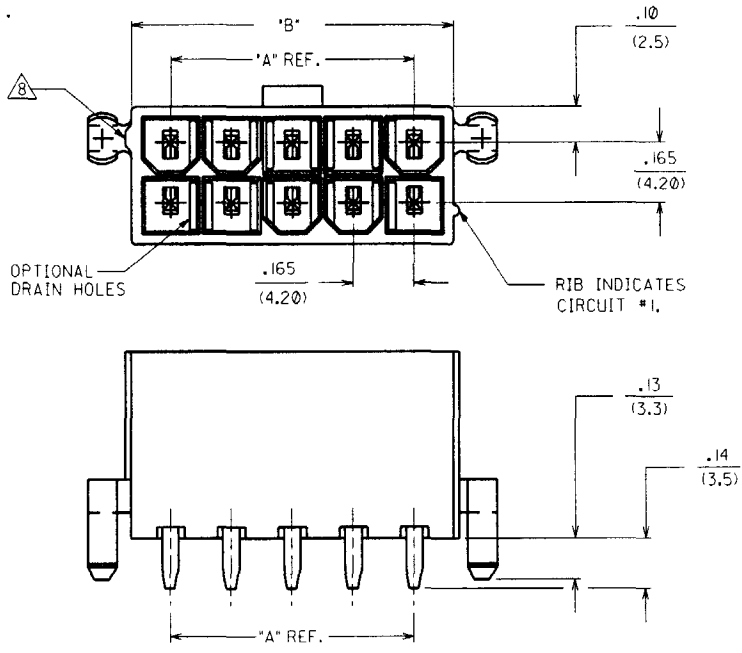


13 12 11 10 9 8 7 6 5566 4 3 2 1



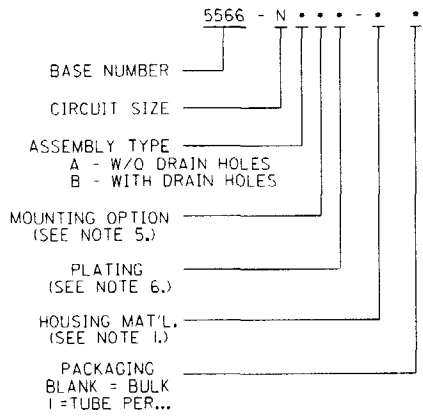
RECOMMENDED HOLE LAYOUT FOR .070/(1.78) MAX. THICK P. C. BOARD

(SEE NOTE 4.)

NOTES:

- 1) HOUSING MATERIAL:
 - *BLANK* - NYLON 6/6, U.L. 94V-2, COLOR: NATURAL.
 - 210 - NYLON 6/6, U.L. 94V-0, COLOR: NATURAL.
 - BL - NYLON 6/6, U.L. 94V-2, COLOR: DYED BLACK.
 - 2) TERMINAL MATERIAL: BRASS ALLOY 260
 - 3) PART MATES WITH MINI-FIT JR. RECEPTACLE #5557.
 - 4) PART IS DESIGNED IN METRIC.
 - 5) MOUNTING OPTIONS:
 - *BLANK* - NO MOUNTING AND -NB SERIES DWGS.
 - 2 - PEG MOUNT (SEE SD-5566-NA)
 - 6) TERMINAL PLATING:
 - *BLANK* - .000035/(.00090) MIN. TIN OVER .000020/(.00050) MIN. COPPER.
 - GS - .000030/(.00076) MIN. SELECT GOLD .000100/(.00254) MIN. SELECT TIN-LEAD OVER .000050/(.00127) MIN. NICKEL.
 - GS2 - .000015/(.00038) MIN. SELECT GOLD AND .000100/(.00254) MIN. SELECT TIN-LEAD OVER .000050/(.00127) MIN. NICKEL.
 - S - .000100/(.00254) MIN. TIN OVER .000050/(.00127) MIN. NICKEL.
 - 7) THIS PART CONFORMS TO MOLEX PRODUCT SPECIFICATION NO. PS-5556-0001.
- △ ANTI-SHINGLING RIB WILL APPEAR ON ALL HOUSINGS MOLDED AFTER 1-1-96.

LEGEND:



CIRCUIT SIZE	DIM. 'A'	DIM. 'B'	DIM. 'C'
2	—	.21 (5.4)	.370 (9.40)
4	.17 (4.2)	.38 (9.6)	.535 (13.60)
6	.33 (8.4)	.54 (13.8)	.701 (17.80)
8	.50 (12.6)	.71 (18.0)	.866 (22.00)
10	.66 (16.8)	.87 (22.2)	1.031 (26.20)
12	.83 (21.0)	1.04 (26.4)	1.197 (30.40)
14	.99 (25.2)	1.20 (30.6)	1.362 (34.60)
16	1.16 (29.4)	1.37 (34.8)	1.528 (38.80)
18	1.32 (33.6)	1.54 (39.0)	1.693 (43.00)
20	1.49 (37.8)	1.70 (43.2)	1.858 (47.20)
22	1.65 (42.0)	1.87 (47.4)	2.024 (51.40)
24	1.82 (46.2)	2.03 (51.6)	2.189 (55.60)

MFG.	SH.	REV.	LTR.	REVISIONS
4	M2	M3		REVISED
3	M2			UCR2000-0649
				WANG 00-03-22
2	M3			REVISED
1	M3	M2		UCR1999-0544
				99/02/23 LEM

DIMENSIONS SHOWN (METRIC) INCH UNLESS OTHERWISE SPECIFIED TOLERANCES: ANGULAR ± 1/2°

1 PLACE	± .15	—
2 PLACE	—	± .38
3 PLACE	—	—

DRAFT WHERE APPLICABLE MUST REMAIN WITHIN DIMENSIONS

DRW. BY: RJF DWG. BY: GT
APP'D. BY: RAS SCALE: 4:1

THIS DRAWING CONTAINS INFORMATION THAT IS PROPRIETARY TO MOLEX INC. AND SHOULD NOT BE USED WITHOUT WRITTEN PERMISSION

MOLEX INCORPORATED
SHEET NO. 1 OF 4
DATE 1/9/87

SEE SHTS 2-4 SDA-5566-N*2**

FILE NAME: SASS566X1.DGN
COP. SIZE: CP C

13 12 11 10 9 8 7 6 5 4

	13	12	11	10	9	8	7	6	5566	4	3	2	1
J	PLATING: 100 M.I. TIN			PLATING: 100 M.I. TIN			PLATING: 15 M.I. SELECT GOLD			PLATING: 15 M.I. SELECT GOLD			
	DRAIN HOLES: WITHOUT DRAIN HOLES			DRAIN HOLES: WITHOUT DRAIN HOLES			DRAIN HOLES: WITHOUT DRAIN HOLES			DRAIN HOLES: WITHOUT DRAIN HOLES			
	MTG. OPTION: WITH PEGS			MTG. OPTION: WITH PEGS			MTG. OPTION: WITH PEGS			MTG. OPTION: WITH PEGS			
	HOUSING MAT'L: NYLON 6/6 94V-2 NATURAL			HOUSING MAT'L: NYLON 6/6 94V-2 NATURAL			HOUSING MAT'L: NYLON 6/6 94V-2 NATURAL			HOUSING MAT'L: NYLON 6/6 94V-2 NATURAL			
	PACKAGING: BULK			PACKAGING: BULK			PACKAGING: BULK			PACKAGING: BULK			
I	PART NO.	ENG NO.	CKTS	PART NO.	ENG NO.	CKTS	PART NO.	ENG NO.	CKTS	PART NO.	ENG NO.	CKTS	
	39-30-6025	5566 -02A2S	2	39-30-6026	5566 -02A2S-210	2	39-30-0026	5566 -02A2GS2	2	39-30-0027	5566 -02A2GS2-210	2	
	39-30-6045	5566 -04A2S	4	39-30-6046	5566 -04A2S-210	4	39-30-0046	5566 -04A2GS2	4	39-30-0047	5566 -04A2GS2-210	4	
	39-30-6065	5566 -06A2S	6	39-30-6066	5566 -06A2S-210	6	39-30-0066	5566 -06A2GS2	6	39-30-0067	5566 -06A2GS2-210	6	
	39-30-6085	5566 -08A2S	8	39-30-6086	5566 -08A2S-210	8	39-30-0086	5566 -08A2GS2	8	39-30-0087	5566 -08A2GS2-210	8	
	39-30-6105	5566 -10A2S	10	39-30-6106	5566 -10A2S-210	10	39-30-0106	5566 -10A2GS2	10	39-30-0107	5566 -10A2GS2-210	10	
	39-30-6125	5566 -12A2S	12	39-30-6126	5566 -12A2S-210	12	39-30-0126	5566 -12A2GS2	12	39-30-0127	5566 -12A2GS2-210	12	
	39-30-6145	5566 -14A2S	14	39-30-6146	5566 -14A2S-210	14	39-30-0146	5566 -14A2GS2	14	39-30-0147	5566 -14A2GS2-210	14	
	39-30-6165	5566 -16A2S	16	39-30-6166	5566 -16A2S-210	16	39-30-0166	5566 -16A2GS2	16	39-30-0167	5566 -16A2GS2-210	16	
	39-30-6185	5566 -18A2S	18	39-30-6186	5566 -18A2S-210	18	39-30-0186	5566 -18A2GS2	18	39-30-0187	5566 -18A2GS2-210	18	
	39-30-6205	5566 -20A2S	20	39-30-6206	5566 -20A2S-210	20	39-30-0206	5566 -20A2GS2	20	39-30-0207	5566 -20A2GS2-210	20	
	39-30-6225	5566 -22A2S	22	39-30-6226	5566 -22A2S-210	22	39-30-0226	5566 -22A2GS2	22	39-30-0227	5566 -22A2GS2-210	22	
	39-30-6245	5566 -24A2S	24	39-30-6246	5566 -24A2S-210	24	39-30-0246	5566 -24A2GS2	24	39-30-0247	5566 -24A2GS2-210	24	

G	PLATING: 100 M.I. TIN			PLATING: 100 M.I. TIN			PLATING: 15 M.I. SELECT GOLD			PLATING: 15 M.I. SELECT GOLD		
	DRAIN HOLES: WITH DRAIN HOLES			DRAIN HOLES: WITH DRAIN HOLES			DRAIN HOLES: WITH DRAIN HOLES			DRAIN HOLES: WITH DRAIN HOLES		
	MTG. OPTION: WITH PEGS			MTG. OPTION: WITH PEGS			MTG. OPTION: WITH PEGS			MTG. OPTION: WITH PEGS		
	HOUSING MAT'L: NYLON 6/6 94V-2 NATURAL			HOUSING MAT'L: NYLON 6/6 94V-2 NATURAL			HOUSING MAT'L: NYLON 6/6 94V-2 NATURAL			HOUSING MAT'L: NYLON 6/6 94V-2 NATURAL		
	PACKAGING: BULK			PACKAGING: BULK			PACKAGING: BULK			PACKAGING: BULK		
F	PART NO.	ENG NO.	CKTS	PART NO.	ENG NO.	CKTS	PART NO.	ENG NO.	CKTS	PART NO.	ENG NO.	CKTS
	39-30-6027	5566 -02B2S	2	39-30-6028	5566 -02B2S-210	2	39-30-0028	5566 -02B2GS2	2	39-30-0029	5566 -02B2GS2-210	2
	39-30-6047	5566 -04B2S	4	39-30-6048	5566 -04B2S-210	4	39-30-0048	5566 -04B2GS2	4	39-30-0049	5566 -04B2GS2-210	4
	39-30-6067	5566 -06B2S	6	39-30-6068	5566 -06B2S-210	6	39-30-0068	5566 -06B2GS2	6	39-30-0069	5566 -06B2GS2-210	6
	39-30-6087	5566 -08B2S	8	39-30-6088	5566 -08B2S-210	8	39-30-0088	5566 -08B2GS2	8	39-30-0089	5566 -08B2GS2-210	8
	39-30-6107	5566 -10B2S	10	39-30-6108	5566 -10B2S-210	10	39-30-0108	5566 -10B2GS2	10	39-30-0109	5566 -10B2GS2-210	10
	39-30-6127	5566 -12B2S	12	39-30-6128	5566 -12B2S-210	12	39-30-0128	5566 -12B2GS2	12	39-30-0129	5566 -12B2GS2-210	12
	39-30-6147	5566 -14B2S	14	39-30-6148	5566 -14B2S-210	14	39-30-0148	5566 -14B2GS2	14	39-30-0149	5566 -14B2GS2-210	14
	39-30-6167	5566 -16B2S	16	39-30-6168	5566 -16B2S-210	16	39-30-0168	5566 -16B2GS2	16	39-30-0169	5566 -16B2GS2-210	16
	39-30-6187	5566 -18B2S	18	39-30-6188	5566 -18B2S-210	18	39-30-0188	5566 -18B2GS2	18	39-30-0189	5566 -18B2GS2-210	18
	39-30-6207	5566 -20B2S	20	39-30-6208	5566 -20B2S-210	20	39-30-0208	5566 -20B2GS2	20	39-30-0209	5566 -20B2GS2-210	20
	39-30-6227	5566 -22B2S	22	39-30-6228	5566 -22B2S-210	22	39-30-0228	5566 -22B2GS2	22	39-30-0229	5566 -22B2GS2-210	22
	39-30-6247	5566 -24B2S	24	39-30-6248	5566 -24B2S-210	24	39-30-0248	5566 -24B2GS2	24	39-30-0249	5566 -24B2GS2-210	24

C																																																																																																																																						
B																																																																																																																																						
A																																																																																																																																						
	<table border="1"> <tr> <td colspan="12">DIMENSIONS SHOWN (METRIC) INCH</td> </tr> <tr> <td colspan="12">UNLESS OTHERWISE SPECIFIED TOLERANCES: ANGULAR ± 1/2°</td> </tr> <tr> <td colspan="12"> <table border="1"> <tr> <td>3 PLACE</td><td>± .010</td><td>---</td></tr> <tr> <td>2 PLACE</td><td>± .015</td><td>± 0.25</td></tr> <tr> <td>1 PLACE</td><td>---</td><td>± 0.38</td></tr> </table> </td> </tr> <tr> <td colspan="12">DRAFT WHERE APPLICABLE MUST REMAIN WITHIN DIMENSIONS</td> </tr> <tr> <td>DRW. BY</td><td>LEM</td><td>DRW. BY</td><td>MAB</td><td colspan="8"></td><td>DATE</td><td>9/9/02/17</td> </tr> <tr> <td>APP'D. BY</td><td>RRE</td><td>SCALE</td><td>2:1</td><td colspan="8"></td><td>FILE NAME</td><td>60532</td> </tr> <tr> <td colspan="12"> <table border="1"> <tr> <td colspan="12">REVISIONS</td> </tr> <tr> <td>LTR.</td><td></td><td></td><td></td><td></td><td></td><td></td><td></td><td></td><td></td><td></td><td></td><td></td> </tr> </table> </td> </tr> </table>												DIMENSIONS SHOWN (METRIC) INCH												UNLESS OTHERWISE SPECIFIED TOLERANCES: ANGULAR ± 1/2°												<table border="1"> <tr> <td>3 PLACE</td><td>± .010</td><td>---</td></tr> <tr> <td>2 PLACE</td><td>± .015</td><td>± 0.25</td></tr> <tr> <td>1 PLACE</td><td>---</td><td>± 0.38</td></tr> </table>												3 PLACE	± .010	---	2 PLACE	± .015	± 0.25	1 PLACE	---	± 0.38	DRAFT WHERE APPLICABLE MUST REMAIN WITHIN DIMENSIONS												DRW. BY	LEM	DRW. BY	MAB									DATE	9/9/02/17	APP'D. BY	RRE	SCALE	2:1									FILE NAME	60532	<table border="1"> <tr> <td colspan="12">REVISIONS</td> </tr> <tr> <td>LTR.</td><td></td><td></td><td></td><td></td><td></td><td></td><td></td><td></td><td></td><td></td><td></td><td></td> </tr> </table>												REVISIONS												LTR.												
DIMENSIONS SHOWN (METRIC) INCH																																																																																																																																						
UNLESS OTHERWISE SPECIFIED TOLERANCES: ANGULAR ± 1/2°																																																																																																																																						
<table border="1"> <tr> <td>3 PLACE</td><td>± .010</td><td>---</td></tr> <tr> <td>2 PLACE</td><td>± .015</td><td>± 0.25</td></tr> <tr> <td>1 PLACE</td><td>---</td><td>± 0.38</td></tr> </table>												3 PLACE	± .010	---	2 PLACE	± .015	± 0.25	1 PLACE	---	± 0.38																																																																																																																		
3 PLACE	± .010	---																																																																																																																																				
2 PLACE	± .015	± 0.25																																																																																																																																				
1 PLACE	---	± 0.38																																																																																																																																				
DRAFT WHERE APPLICABLE MUST REMAIN WITHIN DIMENSIONS																																																																																																																																						
DRW. BY	LEM	DRW. BY	MAB									DATE	9/9/02/17																																																																																																																									
APP'D. BY	RRE	SCALE	2:1									FILE NAME	60532																																																																																																																									
<table border="1"> <tr> <td colspan="12">REVISIONS</td> </tr> <tr> <td>LTR.</td><td></td><td></td><td></td><td></td><td></td><td></td><td></td><td></td><td></td><td></td><td></td><td></td> </tr> </table>												REVISIONS												LTR.																																																																																																														
REVISIONS																																																																																																																																						
LTR.																																																																																																																																						

PLATING:		35 M.I. TIN		PLATING:		35 M.I. TIN		PLATING:		PLATING:	
DRAIN HOLES:		WITHOUT DRAIN HOLES		DRAIN HOLES:		WITHOUT DRAIN HOLES		DRAIN HOLES:		DRAIN HOLES:	
MTG. OPTION:		WITH PEGS		MTG. OPTION:		WITH PEGS		MTG. OPTION:		MTG. OPTION:	
HOUSING MAT'L:		NYLON 6/6 94V-2 (BLACK)		HOUSING MAT'L:		94V-2 NATURAL		HOUSING MAT'L:		HOUSING MAT'L:	
PACKAGING:		BULK		PACKAGING:		TUBE		PACKAGING:		PACKAGING:	
PART NO.	ENG NO.	CKTS		PART NO.	ENG NO.	CKTS		PART NO.	ENG NO.	CKTS	
39-31-9028	5566 -02A2-BL	2		39-34-8028	5566 -02A2-1	2					
39-31-9048	5566 -04A2-BL	4		39-34-8048	5566 -04A2-1	4					
39-31-9068	5566 -06A2-BL	6		39-34-8068	5566 -06A2-1	6					
39-31-9088	5566 -08A2-BL	8		39-34-8088	5566 -08A2-1	8					
39-31-9108	5566 -10A2-BL	10		39-34-8108	5566 -10A2-1	10					
39-31-9128	5566 -12A2-BL	12		39-34-8128	5566 -12A2-1	12					
39-31-9148	5566 -14A2-BL	14		39-34-8148	5566 -14A2-1	14					
39-31-9168	5566 -16A2-BL	16		39-34-8168	5566 -16A2-1	16					
39-31-9188	5566 -18A2-BL	18		39-34-8188	5566 -18A2-1	18					
39-31-9208	5566 -20A2-BL	20		39-34-8208	5566 -20A2-1	20					
39-31-9228	5566 -22A2-BL	22		39-34-8228	5566 -22A2-1	22					
39-31-9248	5566 -24A2-BL	24		39-34-8248	5566 -24A2-1	24					

PLATING:				PLATING:				PLATING:		PLATING:	
DRAIN HOLES:				DRAIN HOLES:				DRAIN HOLES:		DRAIN HOLES:	
MTG. OPTION:				MTG. OPTION:				MTG. OPTION:		MTG. OPTION:	
HOUSING MAT'L:				HOUSING MAT'L:				HOUSING MAT'L:		HOUSING MAT'L:	
PACKAGING:				PACKAGING:				PACKAGING:		PACKAGING:	
PART NO.	ENG NO.	CKTS		PART NO.	ENG NO.	CKTS		PART NO.	ENG NO.	CKTS	

PLATING:				PLATING:				PLATING:		PLATING:	
DRAIN HOLES:				DRAIN HOLES:				DRAIN HOLES:		DRAIN HOLES:	
MTG. OPTION:				MTG. OPTION:				MTG. OPTION:		MTG. OPTION:	
HOUSING MAT'L:				HOUSING MAT'L:				HOUSING MAT'L:		HOUSING MAT'L:	
PACKAGING:				PACKAGING:				PACKAGING:		PACKAGING:	
PART NO.	ENG NO.	CKTS		PART NO.	ENG NO.	CKTS		PART NO.	ENG NO.	CKTS	

DIMENSIONS SHOWN (METRIC INCH)		UNLESS OTHERWISE SPECIFIED TOLERANCES: ANGULAR ± 1/2°		REVISIONS		REVISIONS		DIMENSIONS SHOWN (METRIC INCH) $\nabla = 0$ $\blacktriangledown = 0$ REVISE ONLY ON CAD SYSTEM TITLE: MINI-FIT JR. VERT. HEADER ASSEMBLIES W/MTG. PEGS AND DRAIN HOLE OPTION. DATE: 99/02/17 PART NO.: SEE CHART. DRWG. NO.: SDA-5566-N*2*- FILE NAME: E:\5566X2.DWG DIV.: CO C SIZE:		
3 PLACE	± .010	2 PLACE	± .015 ± 0.25	M2	SEE SHEET #1	J2	SEE SHEET #1	I	SEE SHT. 1	
1 PLACE	± 0.30			G	SEE SHT. 1	D	SEE SHT. 1			
DRAFT WHERE APPLICABLE MUST REMAIN WITHIN DIMENSIONS				DRWG. BY: LEM	CHK'D. BY: MAB	APP'D. BY: RRE	SCALE: 2:1			