

## FEATURES AND SPECIFICATIONS

### Features and Benefits

- 6 to 72 circuits
- Holds wires for secure, reliable contact
- Modular construction reduces inventory
- High flammability rating

### Reference Information

UL : File No. E48521  
 Guide No. XCFR2  
 CSA: File No. 025562



**5.08mm (.200") Pitch  
 Beau Eurostyle®  
 Low Profile, Three Level  
 Terminal Block**

### Electrical

Voltage: 300 V  
 Maximum Current: 17.5 Amp  
 Insulation Resistance: >5,000 Megaohms

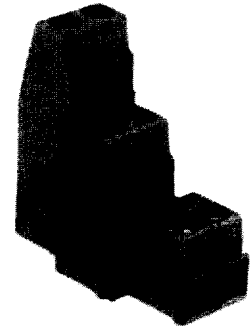
### Mechanical

Rec. Tightening Torque: 5 in. lbs., .56 Nm  
 Operating Temperature: 110°C  
 Wire Strip Length: 1/4" or 6mm

### Physical

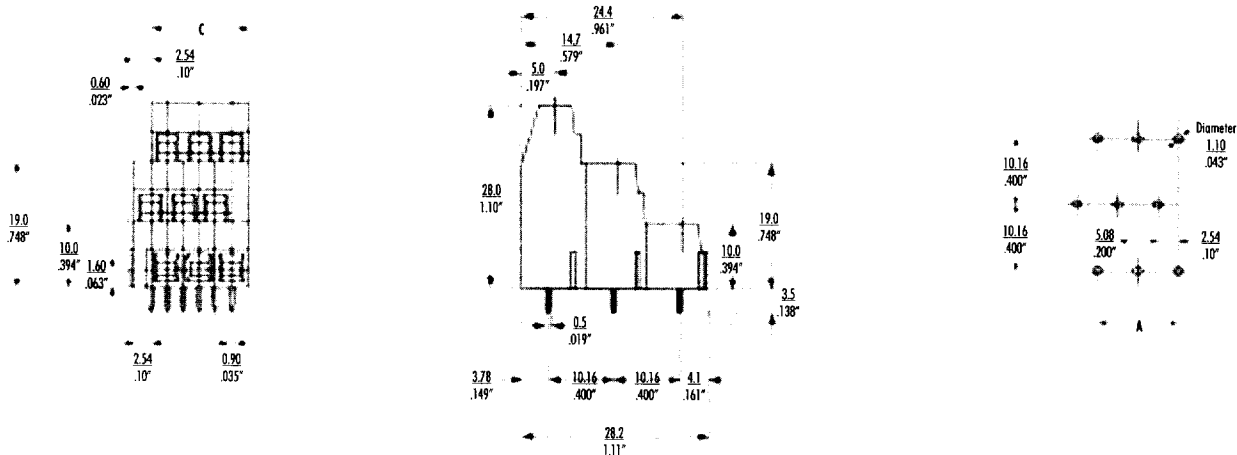
Housing: Polyamide, UL94 V-0, black  
 Screws: Bronze  
 Screw Plating: Nickel  
 Contacts: Copper Alloy  
 Contact Plating: Tin  
 Pressure Clamp: Brass  
 Pressure Clamp Plating: Nickel  
 Wire Range: 14 to 26 AWG, 1.5 to 0.2mm<sup>2</sup>

**39880  
 Modular**



**88 Series**

## CATALOG DRAWING (FOR REFERENCE ONLY)



## ORDERING INFORMATION AND DIMENSIONS

Order # (Engineering #) Replace XX with # of circuits, 06-72

**Tin Plated**  
**39880-08XX (8831XX)**

# of Circuits	A		C		# of Circuits	A		C	
	in	mm	in	mm		in	mm	in	mm
6	.20	5.1	.42	10.2	42	2.60	66.0	2.82	71.1
9	.40	10.2	.62	15.2	45	2.80	71.1	3.02	76.2
12	.60	15.2	.82	20.3	48	3.00	76.2	3.22	81.3
15	.80	20.3	1.02	25.4	51	3.20	81.3	3.42	86.4
18	1.00	25.4	1.22	30.5	54	3.40	86.4	3.62	91.4
21	1.20	30.5	1.42	35.6	57	3.60	91.4	3.82	96.5
24	1.40	35.6	1.62	40.6	60	3.80	96.5	4.02	101.6
27	1.60	40.6	1.82	45.7	63	4.00	101.6	4.22	106.7
30	1.80	45.7	2.02	50.8	66	4.20	106.7	4.42	111.8
33	2.00	50.8	2.22	55.9	69	4.40	111.8	4.62	116.8
36	2.20	55.9	2.42	61.0	72	4.60	116.8	4.82	121.9
39	2.40	61.0	2.62	66.0					

\*Consult factory for imprinting and other options