

**PLEASE CHECK WWW.MOLEX.COM FOR LATEST PART INFORMATION**

**Part Number:** [0350729902](#)  
**Status:** **Active**  
**Description:** MP-Lock™ Quick Disconnect, Female, for 10-14 AWG (5.26-2.08mm<sup>2</sup>), Metal Strip, Tab 6.35 by 0.81mm (.250 by .031"), Pre-Tin Plated

**Documents:**

[Drawing \(PDF\)](#) [RoHS Certificate of Compliance \(PDF\)](#)  
[Product Specification PS-35960-001 \(PDF\)](#)

**Agency Certification**

CSA LR95446  
 UL E92853

**General**

Product Family Quick Disconnects  
 Series [35072](#)  
 Crimp Quality Equipment Yes  
 Product Name MP-Lock™  
 Type Quick Disconnect

**Physical**

Barrel Type Open  
 Gender Female  
 Glow-Wire Compliant No  
 Insulation None  
 Lock to Mating Part Yes  
 Material - Metal Brass  
 Material - Plating Mating Tin  
 Material - Plating Termination Tin  
 Orientation Straight  
 Packaging Type Reel  
 Plating min: Mating (µin) 32.00  
 Plating min: Mating (µm) 0.800  
 Plating min: Termination (µin) 32.00  
 Plating min: Termination (µm) 0.80  
 Polarized to Mating Part Yes  
 Tab Thickness 0.81mm (.032")  
 Tab Width 6.35mm (.250")  
 Temperature Range - Operating -40°C to +105°C  
 Termination Interface: Style Crimp or Compression  
 Wire Insulation Diameter 3.00-5.10mm (.118-.201")  
 Wire Size AWG 10, 12, 14  
 Wire Size mm<sup>2</sup> 2.08 - 5.26

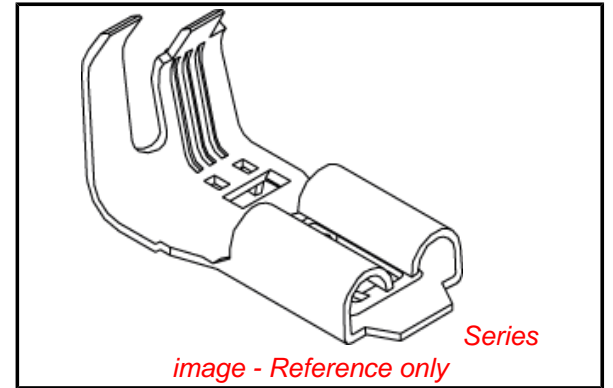
**Electrical**

Voltage - Maximum 300V

**Material Info**

**Reference - Drawing Numbers**

Product Specification PS-35960-001  
 Sales Drawing SD-35072-9702



**EU RoHS**

**ELV and RoHS Compliant**  
**REACH SVHC Contains SVHC: No**  
**Halogen-Free Status**

**China RoHS**



**Need more information on product environmental compliance?**

Email [productcompliance@molex.com](mailto:productcompliance@molex.com)  
 For a multiple part number RoHS Certificate of Compliance, [click here](#)

Please visit the [Contact Us](#) section for any non-product compliance questions.

**Search Parts in this Series**

[35072Series](#)

**Use With**

[35196](#) , [35959](#)

**Application Tooling | FAQ**

*Tooling specifications and manuals are found by selecting the products below. Crimp Height Specifications are then contained in the Application Tooling Specification document.*

**Global**

| Description                                   | Product #                  |
|---|----------------------------|
| Hand Tool for .250 MP-Lock Crimp Terminals    | <a href="#">0638196500</a> |
| Extraction Tool for MP-Lock™ Quick Disconnect | <a href="#">0638135500</a> |

**Japan**

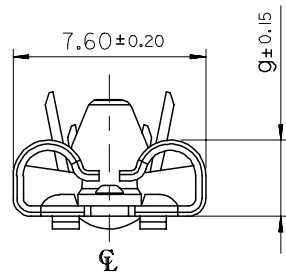
| Description         | Product #                  |
|---------------------|----------------------------|
| End-Feed Applicator | <a href="#">0573713100</a> |

This document was generated on 04/15/2010

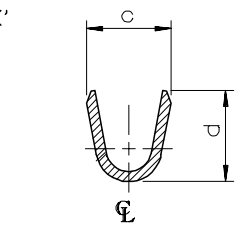
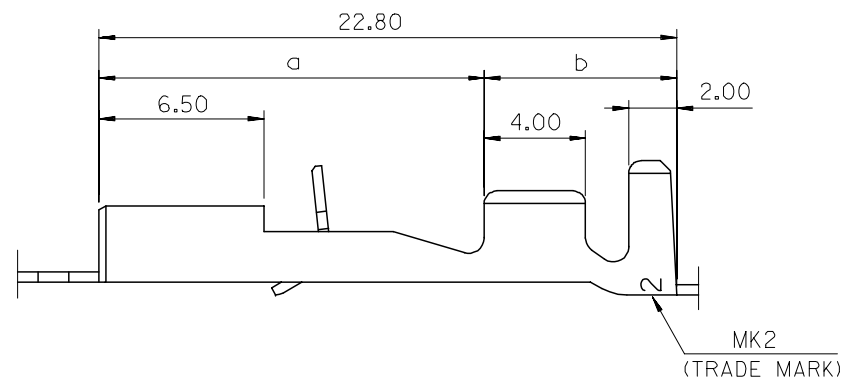
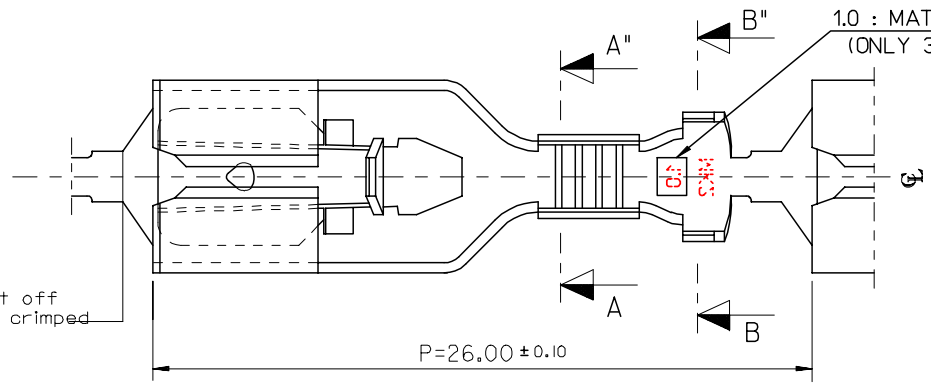
**PLEASE CHECK [WWW.MOLEX.COM](http://WWW.MOLEX.COM) FOR LATEST PART INFORMATION**

DWG. NO. SD-35072-9702  
 PROJECT NO.  
 SIMILAR ITEM  
 DO NOT SCALE DRAWING DIMENSION IN METRIC

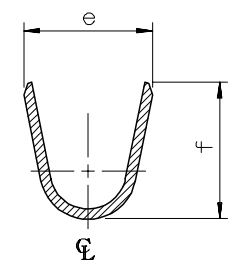
8 7 6 5 4 3 2 1



This part is cut off when wires are crimped



SECTION:A-A'



SECTION:B-B'

| ENG.NO.    | a    | b   | c   | d   | e   | f   | g    | WIRE SIZE | INSUL.DIA. | MATING TAB THICK' |
|------------|------|-----|-----|-----|-----|-----|------|-----------|------------|-------------------|
| 35072-9702 | 15.1 | 7.7 | 2.6 | 3.2 | 4.8 | 4.8 | 2.92 | AWG#22-18 | 1.5-3.1    | 0.8 t             |
| 35072-9802 | 15.1 | 7.7 | 3.7 | 3.6 | 5.0 | 5.5 |      | AWG#18-14 | 2.2-3.4    |                   |
| 35072-9902 | 14.4 | 8.4 | 4.6 | 5.4 | 6.8 | 6.2 |      | AWG#14-10 | 3.0-5.1    |                   |
| 35072-9712 | 15.1 | 7.7 | 2.6 | 3.2 | 4.8 | 4.8 | 3.00 | AWG#22-18 | 1.5-3.1    | 1.0 t             |

- NOTES
- MATERIAL: TIN-PLATED BRASS 0.4mm THICK'
  - APPLICABLE HOUSING: 35196-0110
  - MATING TAB WIDTH : 6.35mm

|   |   |   |  |   |  |   |                           |
|---|---|---|--|---|--|---|---------------------------|
| REDRAWN<br>ECN NO. KOR2006-0031<br>DRWN: J.B.JIN 05/08/30<br>CHK: W.Y.YANG<br>APPR: C.W.LEE | DESCRIPTION<br>MAJOR<br>CRITICAL<br>C=0 | QUALITY SYMBOLS   | GENERAL TOLERANCES:<br>(UNLESS SPECIFIED)  | SCALE<br>5:1  | DESIGN UNITS<br><input checked="" type="checkbox"/> mm <input type="checkbox"/> INCH   | THIRD ANGLE PROJECTION<br><input type="checkbox"/> mm <input type="checkbox"/> INCH <input checked="" type="checkbox"/> mm ONLY | SHT<br>REV                |
|   |   | 4 PLACES ±0.     ±-   | 5:1  | <input type="checkbox"/> mm <input type="checkbox"/> INCH <input checked="" type="checkbox"/> mm ONLY | DRAWN BY & DATE<br>W.Y.YANG 96/03/19   | TITLE:<br>.250 MP-LOCK<br>RECEPTACLE TERMINAL   | REVISE ON<br>CAD ONLY     |
|   |   | 3 PLACES ±0.     ±-   | 3:1  | <input type="checkbox"/> mm <input type="checkbox"/> INCH <input checked="" type="checkbox"/> mm ONLY | CHECKED BY & DATE<br>B.K.CHOI 96/03/19   | MOLEX<br>MOLEX INCORPORATED   | SHEET NO.<br>1 OF 1       |
|   |   | 2 PLACES ±0.30     ±-   | 2:1  | <input type="checkbox"/> mm <input type="checkbox"/> INCH <input checked="" type="checkbox"/> mm ONLY | APPROVED BY & DATE<br>C.W.LEE 96/03/19   | CAD FILENAME<br>W.Y.YANG 93/03/19   | MATERIAL NO.<br>SEE TABLE |
| 1 PLACE ±0.30     ±-  | 1:1                                     | <input type="checkbox"/> mm <input type="checkbox"/> INCH <input checked="" type="checkbox"/> mm ONLY | ANGULAR: ± 1 °   | DRAWING NO.<br>SD-35072-9702  | THIS DRAWING CONTAINS INFORMATION THAT IS PROPRIETARY TO MOLEX INCORPORATED AND SHOULD NOT BE USED WITHOUT WRITTEN PERMISSION. | SIZE<br>B   |                           |
| A1  | REV                                     | DRAFT WHERE APPLICABLE MUST REMAIN WITHIN DIMENSIONS  | THIS DRAWING CONTAINS INFORMATION THAT IS PROPRIETARY TO MOLEX INCORPORATED AND SHOULD NOT BE USED WITHOUT WRITTEN PERMISSION. | KOREA   | MX-A3  |   |                           |

8 7 6 5 4 3 2 1 KOREA MX-A3