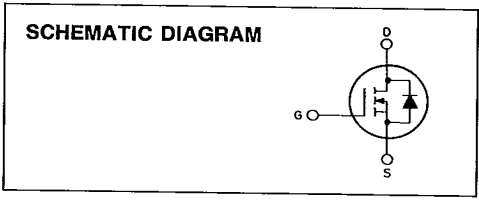


**N - CHANNEL ENHANCEMENT MODE
POWER MOS TRANSISTOR IN DIE FORM**

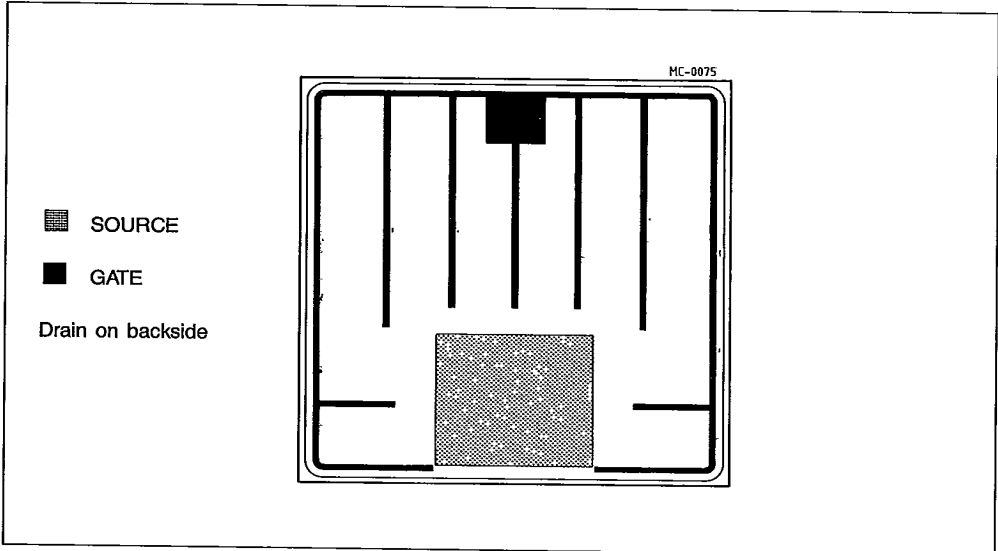
- DIE SIZE: 170 × 170 mils
- METALLIZATION:
 - Top Al
 - Back Au/Cr/Ni/Au
- BACKSIDE THICKNESS: 6100 Å
- DIE THICKNESS: 16 ± 2 mils
- PASSIVATION: P-Vapox
- BONDING PAD SIZE:
 - Source 47 × 51 mils
 - Gate 15 × 18 mils
- RECOMMENDED WIRE BONDING:
 - Sóurce Al - max 20 mils
 - Gate Al - max 5 mils



V_{DS}	$R_{DS(on)}$	I_D^*
50 V	0.04 Ω	30 A

N-channel enhancement mode POWER MOS field effect transistor. Easy drive and very fast switching times make this POWER MOS ideal for high speed switching applications.

Die geometry



* With R_{thj-c} max. 1.67°C/W

GUARANTEED PROBED ELECTRICAL CHARACTERISTICS ($T_j = 25^\circ\text{C}$, Note 1)

Parameters		Test Conditions		Min.	Typ.	Max.	Unit
$V_{(BR)DSS}$	Drain-source breakdown voltage	$I_D = 250 \mu\text{A}$	$V_{GS} = 0$	50			V
I_{DSS}	Zero gate voltage drain current	$V_{DS} = \text{Max Rating}$ $V_{DS} = \text{Max Rating} \times 0.8$ $T_j = 125^\circ\text{C}$		T-39-11		250 1000	μA μA
I_{GSS}	Gate-body leakage current	$V_{GS} = \pm 20 \text{ V}$				100	nA
$V_{GS(th)}$	Gate threshold voltage	$V_{DS} = V_{GS}$	$I_D = 1 \text{ mA}$	2.1		4	V
$R_{DS(on)}$	Static drain-source on resistance	$V_{GS} = 10 \text{ V}$	$I_D = 1 \text{ A}$			0.04	Ω

NOTES: 1 - Due to probe testing limitations dc parameters only are tested. They are measured using pulse techniques: pulse width $< 300 \mu\text{s}$, duty cycle $< 2\%$

2 - For detailed device characteristics please refer to the discrete device datasheet