

**PLEASE CHECK WWW.MOLEX.COM FOR LATEST PART INFORMATION**

**Part Number:** **0681451615**  
**Status:** **Active**  
**Description:** 1.02mm (.040") Pitch Wire-to-Board Header, 1.02mm (.040") Tab Type, Vertical, 16 Circuits, Gray

**Documents:**

[3D Model](#) [Product Specification PS-68145-002 \(PDF\)](#)  
[Drawing \(PDF\)](#) [RoHS Certificate of Compliance \(PDF\)](#)  
[Product Specification PS-68145-001 \(PDF\)](#)

**General**

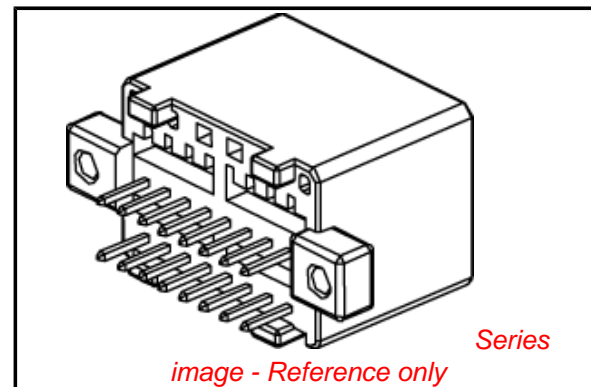
Product Family	PCB Headers
Series	<a href="#">68145</a>
Application	Wire-to-Board
Product Name	N/A

**Physical**

Breakaway	No
Circuits (Loaded)	16
Circuits (maximum)	16
Color - Resin	Gray
Durability (mating cycles max)	50
First Mate / Last Break	No
Glow-Wire Compliant	No
Guide to Mating Part	No
Keying to Mating Part	None
Lock to Mating Part	Yes
Material - Metal	Brass
Material - Plating Mating	Tin
Material - Plating Termination	Tin
Material - Resin	Polyester
Number of Rows	2
Orientation	Vertical
PC Tail Length (in)	0.146 In
PC Tail Length (mm)	3.70 mm
PCB Locator	Yes
PCB Retention	Yes
PCB Thickness Recommended (in)	0.062 In
PCB Thickness Recommended (mm)	1.60 mm
Packaging Type	Tray
Pitch - Mating Interface (in)	0.098 In
Pitch - Mating Interface (mm)	2.50 mm
Plating min: Mating (µin)	32
Plating min: Mating (µm)	0.80
Plating min: Termination (µin)	32
Plating min: Termination (µm)	0.80
Shrouded	Partial
Stackable	No
Surface Mount Compatible (SMC)	No
Temperature Range - Operating	-30°C to +85°C
Termination Interface: Style	Through Hole

**Electrical**

Current - Maximum per Contact	5A
Voltage - Maximum	13V



**EU RoHS**

**ELV and RoHS Compliant**  
**REACH SVHC**  
 Not Reviewed  
**Halogen-Free Status**

**China RoHS**



**Need more information on product environmental compliance?**

Email [productcompliance@molex.com](mailto:productcompliance@molex.com)  
 For a multiple part number RoHS Certificate of Compliance, [click here](#)

Please visit the [Contact Us](#) section for any non-product compliance questions.

**Search Parts in this Series**

[68145Series](#)

**Mates With**

[35563 Crimp Housing](#)

**Material Info**

**Reference - Drawing Numbers**

Product Specification

Sales Drawing

PS-68145-001, PS-68145-002

SD-68145-001

This document was generated on 04/07/2010

**PLEASE CHECK [WWW.MOLEX.COM](http://WWW.MOLEX.COM) FOR LATEST PART INFORMATION**

DWG. NO. SD-68145-001

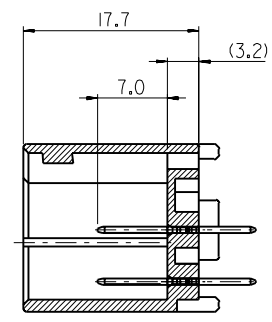
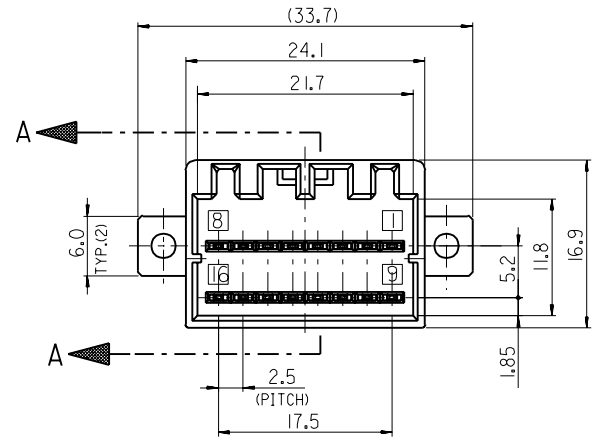
SIMILAR ITEM

PROJECT NO.

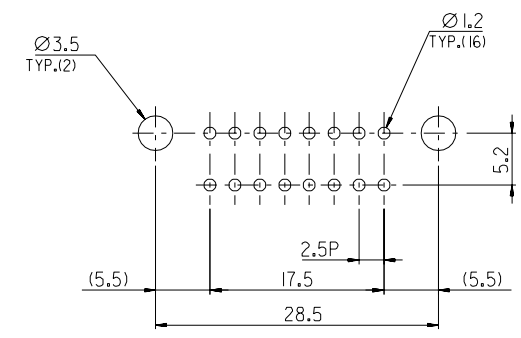
C

B

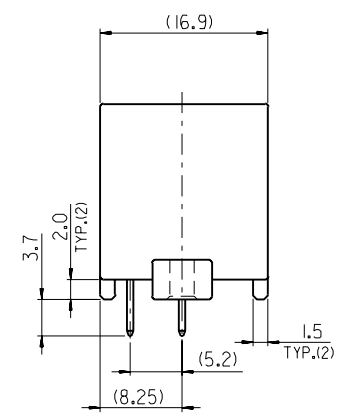
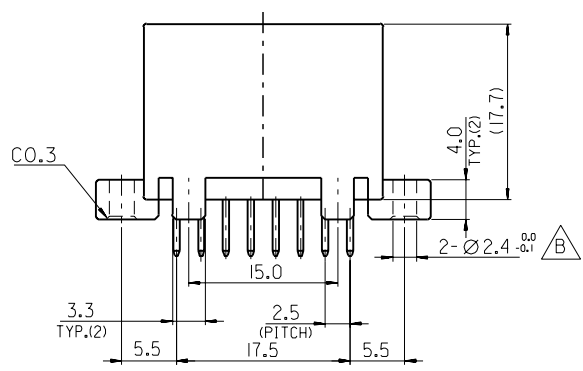
DO NOT SCALE DRAWING  
DIMENSION IN METRIC



SECT.A-A



RECOMMENED P.C.B HOLE DIM.(MOUNT SIDE)



NOTES

- 1.APPLICABLE FEMALE HOUSING : 35563-1615
- 2.WARPAGE OF HOOD TO BE 0.2 MAX. OTHER WARPAGE TO BE 0.1 MAX.
- 3.MATERIAL:HOUSING-POLYESTER (PBT),COLOR-GRAY  
TERMINAL-BRASS, FINISH-TIN PLATING

REVISED	EC NO. KOR2005-0008 DRWN: S.M.KIM 04/11/24 CHK: B.C.YOON 04/11/24 APPR: C.W.LEE	QUALITY SYMBOLS MAJOR -0 CRITICAL C-0	GENERAL TOLERANCES: (UNLESS SPECIFIED)		SCALE 2:1	DESIGN UNITS <input checked="" type="checkbox"/> mm <input type="checkbox"/> INCH	THIRD ANGLE PROJECTION	DIMENSIONS: <input type="checkbox"/> mm <input type="checkbox"/> INCH <input checked="" type="checkbox"/> mm ONLY		SHT	REV
			mm	INCH	DRAWN BY & DATE Y.SIK,KIM 99/05/12	TITLE: 040 WIRE TO BOARD CONNECTOR 16P HEADER ASS'Y (VTL)	MATERIAL NO. 68145-1615	DRAWING NO. SD-68145-001	SHEET NO. 1 OF 1	SIZE B	
B	REV	DESCRIPTION	DRAFT WHERE APPLICABLE MUST REMAIN WITHIN DIMENSIONS		APPROVED BY & DATE C.W.LEE 99/05/13		MATERIAL NO. 68145-1615		DRAWING NO. SD-68145-001		SHEET NO. 1 OF 1

THIS DRAWING CONTAINS INFORMATION THAT IS PROPRIETARY TO MOLEX INCORPORATED AND SHOULD NOT BE USED WITHOUT WRITTEN PERMISSION.