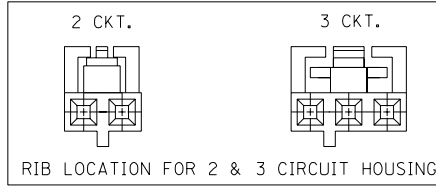


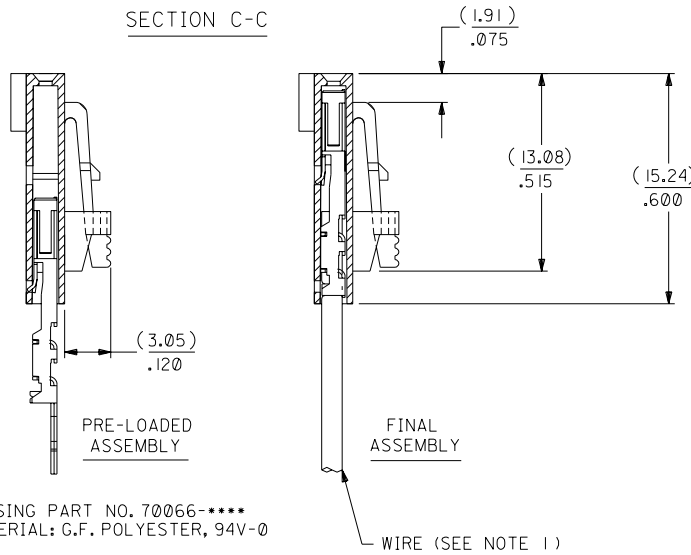
# OPTION G

## NOTES:

- TO BE USED WITH (28) AWG. STRANDED WIRE WITH (1.35)/.053 DIA. MAX. INSULATION.
- SEE CHART FOR CIRCUIT SIZES.
- STANDARD PACKAGING PER PK-70873-0001. OPTIONAL PACKAGING MAY BE AVAILABLE, REQUEST DWG. PK-70400
- PARTS STACKABLE END TO END ON (2.54)/.100 CENTERS.
- REFER TO PRODUCT SPECIFICATION: PS-70400.
- SEE DWG. SDA-70400-\*\*\*\* (SHT. 5) FOR OPTIONAL HOUSING DETAILS.
- 4 CIRCUIT SHOWN. 4 - 25 CKT'S. HAVE (2) RIBS.
- TO MATE WITH MOLEX PART NO'S.: A-70373-\*\*\*\*, A-70389-\*\*\*\*, A-70391-\*\*\*\*, 70107-\*\*\*\*, 70018-\*\*\*\*, A-70543-\*\*\*\*, A-70553-\*\*\*\*, A-70541-\*\*\*\*, A-70551-\*\*\*\*, A-70545-\*\*\*\*, A-70555-\*\*\*\*.
- 2 CIRCUIT ASSEMBLIES SUPPLIED AS GROUPED PAIRS.



## SECTION C-C



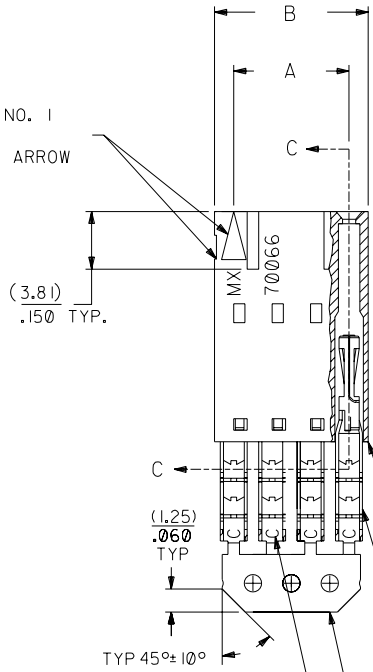
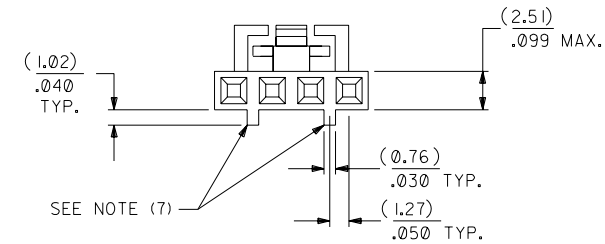
HOUSING PART NO. 70066-\*\*\*\*  
MATERIAL: G.F. POLYESTER, 94V-0

TERMINAL PART NO. 70028-\*\*\*\*  
MATERIAL: PHOSPHOR BRONZE  
PLATING PER ES-88-\*\*\*

30 GOLD - .000030 MIN. GOLD IN SELECT AREA WITH .000075 MIN. TIN IN SELECT AREA OVER .000050 MIN. NICKEL OVER-ALL.

\*THE PRIMARY SHIPPING CARTON WILL BE LABELED "COMPLIANT TO ROHS DIRECTIVE 2002/95/EC AND ELV ANNEX II OF DIRECTIVE 2000/53/EC". CARTONS WITHOUT THIS LABEL MAY CONTAIN PRODUCT WITH LEAD.

CIRCUIT NO. 1  
SLOT OR ARROW



| I.D. SLOT CODE TO WIRE GAUGE CHART |            |
|------------------------------------|------------|
| I.D. SLOT CODE                     | WIRE GAUGE |
| C                                  | 28 AWG.    |

| PLATING CODE (STRIPE ON CARRIER STRIP) |       |
|----------------------------------------|-------|
| PLATING                                | COLOR |
| 30 GOLD                                | RED   |

| CKT. SIZE | A                  | B                  | EDP. NO.   | ENG. NO.     |
|-----------|--------------------|--------------------|------------|--------------|
| 2         | ( 2.54 )<br>.100   | ( 5.05 )<br>.199   | 14-56-3023 | A-70400-1541 |
| 3         | ( 5.08 )<br>.200   | ( 7.59 )<br>.299   | 14-56-3033 | A-70400-1542 |
| 4         | ( 7.62 )<br>.300   | ( 10.13 )<br>.399  | 14-56-3043 | A-70400-1543 |
| 5         | ( 10.16 )<br>.400  | ( 12.67 )<br>.499  | 14-56-3053 | A-70400-1544 |
| 6         | ( 12.70 )<br>.500  | ( 15.21 )<br>.599  | 14-56-3063 | A-70400-1545 |
| 7         | ( 15.24 )<br>.600  | ( 17.75 )<br>.699  | 14-56-3073 | A-70400-1546 |
| 8         | ( 17.78 )<br>.700  | ( 20.29 )<br>.799  | 14-56-3083 | A-70400-1547 |
| 9         | ( 20.32 )<br>.800  | ( 22.83 )<br>.899  | 14-56-3093 | A-70400-1548 |
| 10        | ( 22.86 )<br>.900  | ( 25.37 )<br>.999  | 14-56-3103 | A-70400-1549 |
| 11        | ( 25.54 )<br>1.000 | ( 27.91 )<br>1.099 | 14-56-3113 | A-70400-1550 |
| 12        | ( 27.94 )<br>1.100 | ( 30.45 )<br>1.199 | 14-56-3123 | A-70400-1551 |
| 13        | ( 30.48 )<br>1.200 | ( 32.99 )<br>1.299 | 14-56-3133 | A-70400-1552 |
| 14        | ( 33.02 )<br>1.300 | ( 35.53 )<br>1.399 | 14-56-3143 | A-70400-1553 |
| 15        | ( 35.56 )<br>1.400 | ( 38.07 )<br>1.499 | 14-56-3153 | A-70400-1554 |
| 16        | ( 38.01 )<br>1.500 | ( 40.61 )<br>1.599 | 14-56-3163 | A-70400-1555 |
| 17        | ( 40.64 )<br>1.600 | ( 43.15 )<br>1.699 | 14-56-3173 | A-70400-1556 |
| 18        | ( 43.18 )<br>1.700 | ( 45.69 )<br>1.799 | 14-56-3183 | A-70400-1557 |
| 19        | ( 45.72 )<br>1.800 | ( 48.23 )<br>1.899 | 14-56-3193 | A-70400-1558 |
| 20        | ( 48.26 )<br>1.900 | ( 50.77 )<br>1.999 | 14-56-3203 | A-70400-1559 |
| 21        | ( 50.80 )<br>2.000 | ( 53.31 )<br>2.099 | 14-56-3213 | A-70400-1560 |
| 22        | ( 53.34 )<br>2.100 | ( 55.85 )<br>2.199 | 14-56-3223 | A-70400-1561 |
| 23        | ( 55.88 )<br>2.200 | ( 58.39 )<br>2.299 | 14-56-3233 | A-70400-1562 |
| 24        | ( 58.42 )<br>2.300 | ( 60.93 )<br>2.399 | 14-56-3243 | A-70400-1563 |
| 25        | ( 60.96 )<br>2.400 | ( 63.47 )<br>2.499 | 14-56-3253 | A-70400-1564 |

| LTR. | REVISIONS | LTR. | REVISIONS |
|------|-----------|------|-----------|
|      |           |      |           |

| DRWG. BY | CHK'D. BY | SCALE |
|----------|-----------|-------|
| WAZ      | WAZ       | 4:1   |

| DIMENSIONS SHOWN (METRIC) INCH UNLESS OTHERWISE SPECIFIED TOLERANCES: ANGULAR ± 1/2° |            | REVISE ONLY ON CAD SYSTEM                              |  |
|--------------------------------------------------------------------------------------|------------|--------------------------------------------------------|--|
| 3 PLACE ± .010                                                                       | METRIC --- | TITLE                                                  |  |
| 2 PLACE ± .014                                                                       | ± 0.25     | ASSEMBLY, SL CONNECTOR (SINGLE ROW - (2.54)/.100 GRID) |  |
| 1 PLACE ---                                                                          | ± 0.35     | MOLEX INCORPORATED SHEET NO. DATE 10/11/4              |  |
| DRAFT WHERE APPLICABLE MUST REMAIN WITHIN DIMENSIONS                                 |            | PART NO. SDA-70400-1541-1564                           |  |
| FILE NAME 570400GX9                                                                  |            | DIV. DA                                                |  |