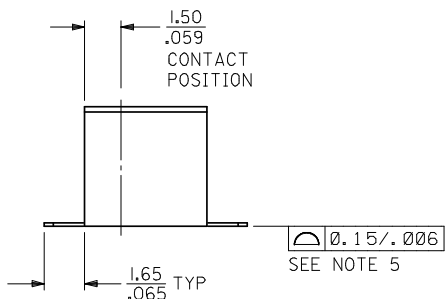
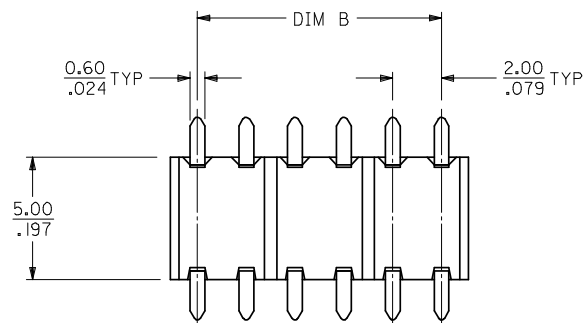
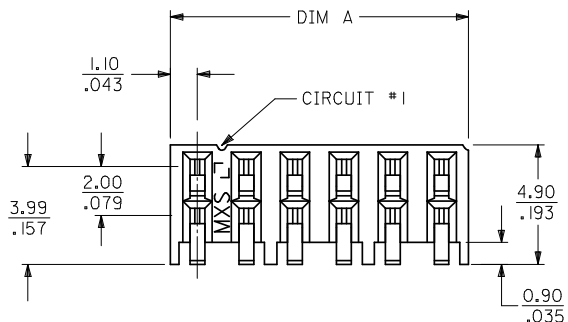
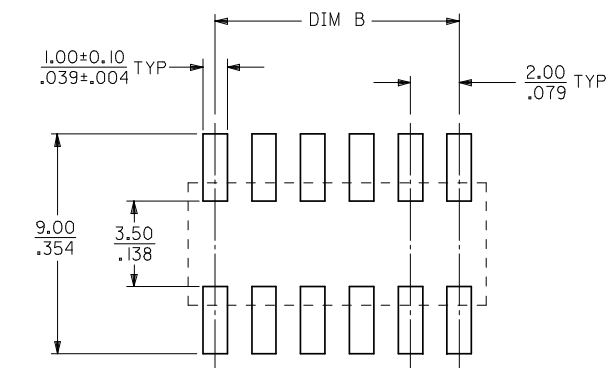


PART NUMBER IN TAPE/REEL	PART NUMBER IN TAPE/REEL	CKT. SIZE	DIM A	DIM B	W	EMBOSSED TYPE
0.76um/30u" GOLD	0.38um/15 u" GOLD					
-	87368-1110	10	10.20/0.402	8.00/0.315	24.00/0.945	A
-	87368-1112	12	12.20/0.480	10.00/0.394	24.00/0.945	A
87368-0320	87368-1120	20	20.20/0.795	18.00/0.709	32.00/1.260	B
-	87368-1140	40	40.20/1.583	38.00/1.496	56.00/2.205	C
-	87368-1150	50	50.20/1.976	48.00/1.890	72.00/2.835	B



- NOTE:
- MATERIAL: HOUSING - NYLON, GLASS FILLED, UL94V-0
COLOR: BLACK
TERMINAL - PHOSPHOR BRONZE
 - FINISHES: TERMINAL - SELECTIVE GOLD IN THE CONTACT AREA:
THICKNESS = SEE TABLE
2.54um/100Mn MIN. SELECTIVE TIN IN THE PC SOLDER TAIL AREA
BOTH OVER 1.27um/50Mn MIN. NICKEL OVERALL
 - PRODUCT SPECIFICATION: PS-87264
 - CIRCUIT SIZE 12 IS SHOWN FOR ILLUSTRATION ONLY, SEE CHART FOR AVAILABLE CIRCUIT SIZES.
 - COPLANARITY OF SOLDER TAIL IS TO BE MEASURED BY RESTING THE PART ON A FLAT GAUGE SURFACE.
 - PART MATEABLE TO ALL MILLI-GRID HEADERS WITH MATING PIN LENGTH BETWEEN 2.50mm AND 4.20mm.
 - PART IS PACK IN TAPE AND REEL.
 - PARTS SHALL BE PACKED IN MOISTURE BARRIER BAG.

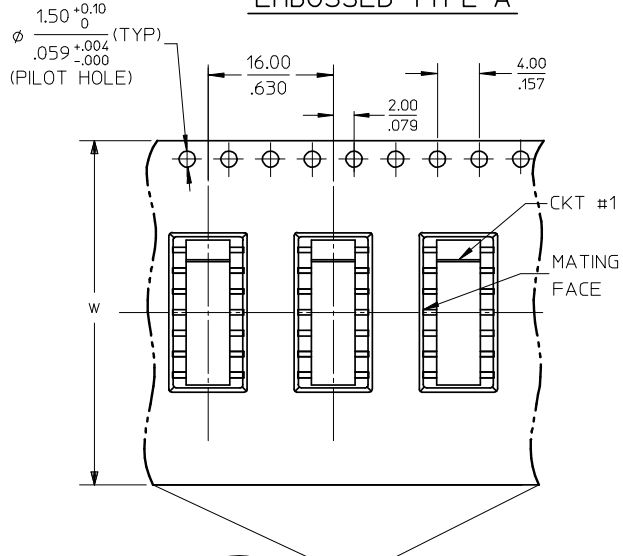


RECOMMENDED PC BOARD LAYOUT

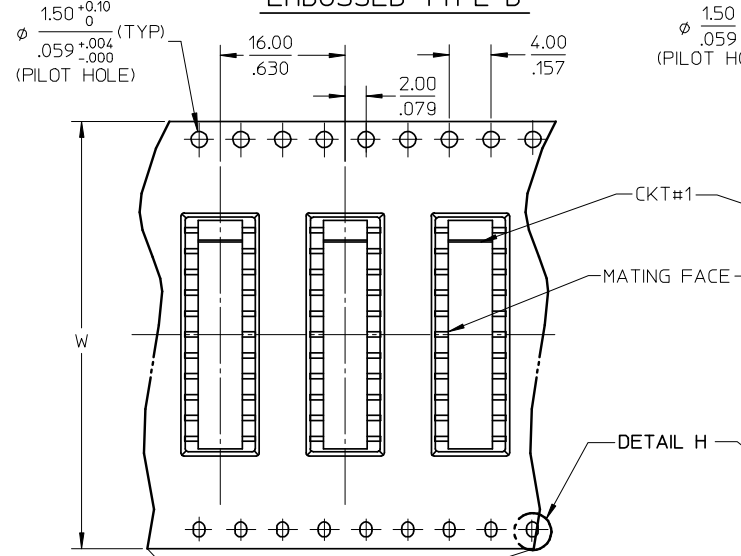
ADD EMBOSSED TYPE 'C'	REV	DESCRIPTION	QUALITY SYMBOLS	GENERAL TOLERANCES (UNLESS SPECIFIED)		DIMENSION STYLE		SCALE	DESIGN UNITS	THIRD ANGLE PROJECTION	
				mm	INCH	MM/IN	NTS	METRIC	PROJECTION		
D3			▽=0	4 PLACES	± ---	± ---	DRAWN BY	DATE	TITLE		
			∇=0	3 PLACES	± ---	± .008	JSGOH	1999/02/12	MGRID SIDE ENTRY RECEPTACLE SMT		
				2 PLACES	± 0.20	± ---	CHECKED BY	DATE	MOLEX INCORPORATED		
				1 PLACE	± ---	± ---	LCHANG	1999/06/10	DOCUMENT NO.		
					ANGULAR ± 3 °		APPROVED BY	DATE	SHEET NO.		
				DRAFT WHERE APPLICABLE MUST REMAIN WITHIN DIMENSIONS		JLIM	1999/06/17	SEE TABLE		SD-87368-001	
						MATERIAL NO.		THIS DRAWING CONTAINS INFORMATION THAT IS PROPRIETARY TO MOLEX INCORPORATED AND SHOULD NOT BE USED WITHOUT WRITTEN PERMISSION			

10 9 8 7 6 5 4 3 2 1

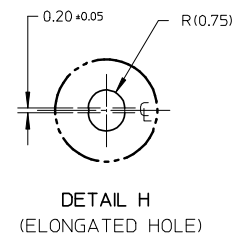
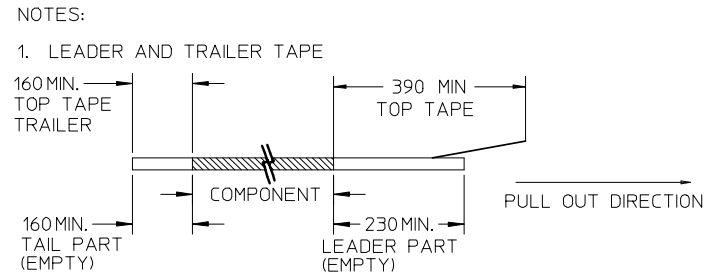
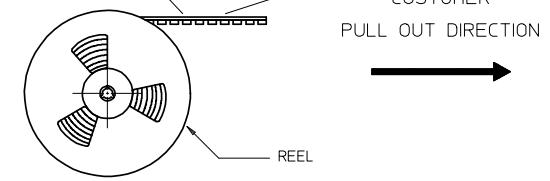
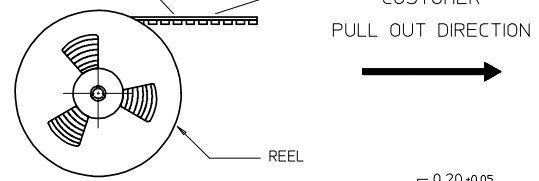
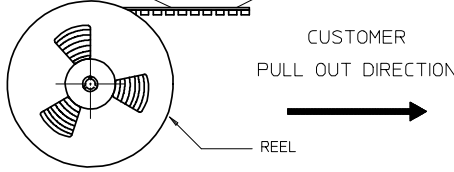
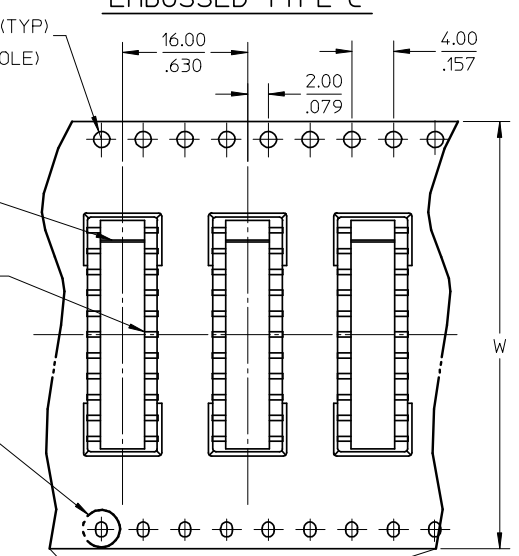
EMBOSSED TYPE A



EMBOSSED TYPE B



EMBOSSED TYPE C



- PEELING OFF FORCE OF THE TOP TAPE: 20-80gf.
(PEELING DIRECTION AS SHOWN IN FOLLOWING FIGURE)
-
- PACKAGING STANDARD IS AS PER EIA-481.
 - TAPE & REEL QUANTITY = 750PCS/REEL

ADD EMBOSSED TYPE 'C' EC NO: S2008-0640 DRWN:ATSEE CHKD:SKANG APPR:MLONG 2008/01/25 2008/01/25 2008/01/28	DESCRIPTION D3	REV	QUALITY SYMBOLS ▽=0 ▽=0	GENERAL TOLERANCES (UNLESS SPECIFIED)		DIMENSION STYLE MM/IN		SCALE NTS	DESIGN UNITS METRIC	THIRD ANGLE PROJECTION				
				4 PLACES ± --- ± ---	3 PLACES ± --- ± .008	2 PLACES ± 0.20 ± ---	1 PLACE ± --- ± ---	ANGULAR ± 3 °		DRAWN BY JSGOH	DATE 1999/02/12	TITLE MGRID SIDE ENTRY RECEPTACLE SMT		
				DRAFT WHERE APPLICABLE MUST REMAIN WITHIN DIMENSIONS		SIZE A3	THIS DRAWING CONTAINS INFORMATION THAT IS PROPRIETARY TO MOLEX INCORPORATED AND SHOULD NOT BE USED WITHOUT WRITTEN PERMISSION			APPROVED BY JLIM	DATE 1999/06/17	MOLEX INCORPORATED		
						SEE TABLE		MATERIAL NO.	DOCUMENT NO.	SD-87368-001			SHEET NO. 2 OF 2	

9 8 7 6 5 4 3 2 1