

PLEASE CHECK WWW.MOLEX.COM FOR LATEST PART INFORMATION

Part Number: [0192020046](#)
Status: **Active**
Description: Funnel Entry Butt Splice for 10-12 AWG Wire

Documents:

[Drawing \(PDF\)](#) [RoHS Certificate of Compliance \(PDF\)](#)

Agency Certification

UL E32244

General

Product Family Splices
 Series [19202](#)
 Crimp Quality Equipment Yes
 Mil-Spec N/A
 Product Name Butt - Funnel Entry

Physical

Barrel Type Closed
 Flammability 94V-0
 Insulation Nylon (PA)
 Packaging Type Adhesive Tape on Reel
 Wire Insulation Diameter 6.65mm (.262") max. Funnel End, 7.01mm (.276") max.
 Wire Size AWG 10, 12

Material Info

Old Part Number CS-952-DK

Reference - Drawing Numbers

Sales Drawing SD-19202-001

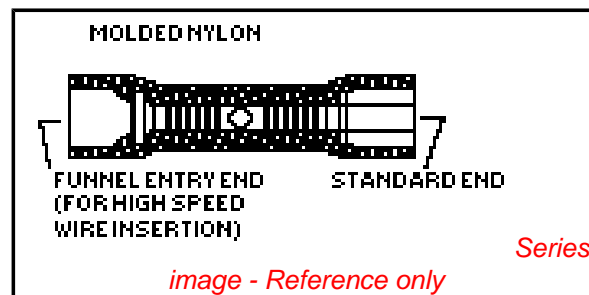


image - Reference only

EU RoHS

**ELV and RoHS
Compliant**

REACH SVHC

Not Reviewed

Halogen-Free

Status

Not Reviewed

China RoHS



**Need more information on product
environmental compliance?**

Email productcompliance@molex.com
 For a multiple part number RoHS Certificate of Compliance, [click here](#)

Please visit the [Contact Us](#) section for any non-product compliance questions.

Search Parts in this Series

[19202Series](#)

Application Tooling | [FAQ](#)

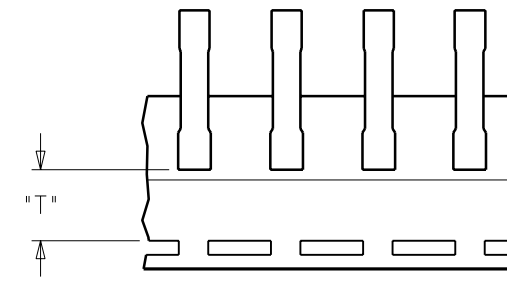
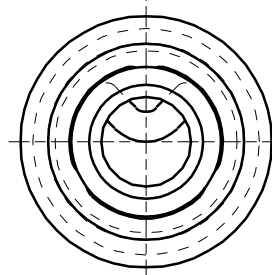
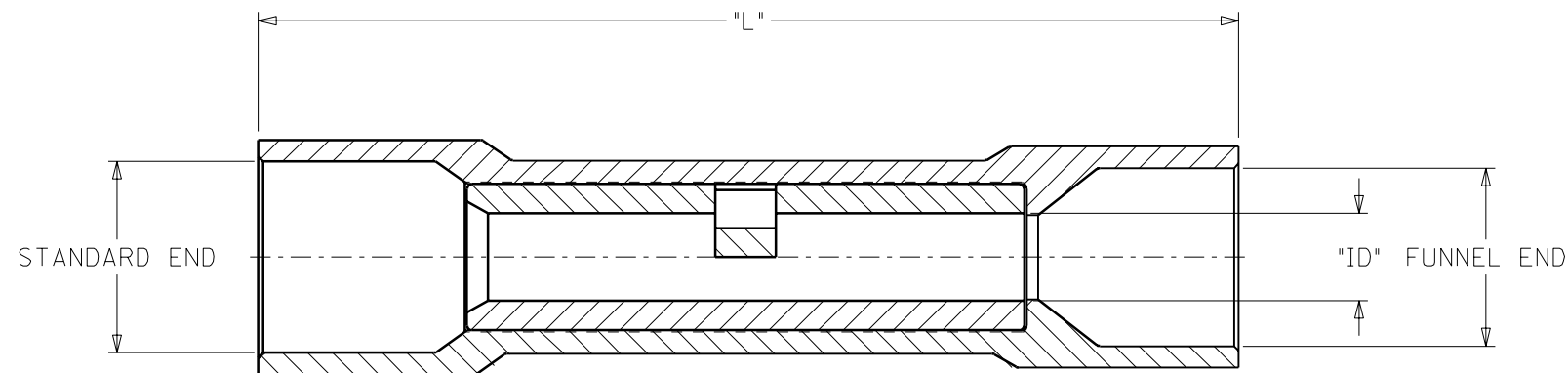
Tooling specifications and manuals are found by selecting the products below. Crimp Height Specifications are then contained in the Application Tooling Specification document.

Global

Description	Product #
Hand Crimp Tool	0640010100
Hand Crimp Tool	0640010300
Hand Crimp Tool	0640015000
Crimp Head for the AT-200™ Pneumatic Hand Tool	0640050100
Crimp Head for the AT-200™ Pneumatic Hand Tool	0640050300
Crimp Head for the AT-200™ Pneumatic Hand Tool	0640055000

PLEASE CHECK WWW.MOLEX.COM FOR LATEST PART INFORMATION

MATERIAL NUMBER	ALTERNATE NUMBER	WIRE SIZE AWG	INSULATION COLOR	CONNECTOR ID	MAX. WIRE INSUL. DIA.		LENTH "L"	TAPE HEIGHT "T"	DESCRIPTION
					STANDARD END	FUNNEL END			
F 192020010	AS-932	22-18	LIGHT RED	.061	.161	.147	1.07	----	LOOSE PIECE
F 192020011	AS-932-DK	22-18	DARK RED	.061	.161	.147	1.07	----	LOOSE PIECE
192020012	AS-932-DKT	22-18	DARK RED	.061	.161	.147	1.07	.480	TAPE MOUNTED
192020026	BS-942	16-14	LIGHT BLUE	.087	.199	.185	1.07	----	LOOSE PIECE
192020030	BS-942T	16-14	LIGHT BLUE	.087	.199	.185	1.07	.480	TAPE MOUNTED
192020027	BS-942-DK	16-14	DARK BLUE	.087	.199	.185	1.07	----	LOOSE PIECE
192020029	BS-942-DKT	16-14	DARK BLUE	.087	.199	.185	1.07	.480	TAPE MOUNTED
192020028	BS-942-DKBT	16-14	DARK BLUE	.087	.199	.185	1.07	.480	TAPE MOUNTED LARGE REEL
E 192020131	BS-942-B	16-14	BLUE	.087	.199	.185	1.07	----	LOOSE PIECE
192020130	BS-932-BBT	16-14	BLUE	.087	.199	.185	1.07	.480	TAPE MOUNTED LARGE REEL
192020045	CS-952	12-10	YELLOW	.138	.276	.262	1.15	----	LOOSE PIECE
192020046	CS-952-DK	12-10	DARK YELLOW	.138	.276	.262	1.15	----	LOOSE PIECE
192020047	CS-952-DKT	12-10	DARK YELLOW	.138	.276	.262	1.15	.440	TAPE MOUNTED
192020048	CS-952-DKBT	12-10	DARK YELLOW	.138	.276	.262	1.15	.440	TAPE MOUNTED LARGE REEL
192020141	CS-952 BULK	12-10	YELLOW	.138	.276	.262	1.15	----	BULK PACKED, 2500 PER PACKAGE
D 192020142	CS-952-DK BULK	12-10	DARK YELLOW	.138	.276	.262	1.15	----	BULK PACKED, 2500 PER PACKAGE



PARTS ON TAPE

NOTES:
 1. MATERIAL: COPPER.
 2. PLATING: ELECTRON-TIN.
 3. INSULATION: 6/6 NYLON

CUSTOMER DRAWING

DIMENSIONS SHOWN (METRIC) INCH		REVISIONS													
UNLESS OTHERWISE SPECIFIED TOLERANCES: ANGULAR ± 1/2°		TITLE													
<table border="1"> <thead> <tr> <th></th> <th>INCH</th> <th>METRIC</th> </tr> </thead> <tbody> <tr> <td>3 PLACE</td> <td>± .005</td> <td>± ---</td> </tr> <tr> <td>2 PLACE</td> <td>± .01</td> <td>± 0.13</td> </tr> <tr> <td>1 PLACE</td> <td>± ---</td> <td>± 0.25</td> </tr> </tbody> </table>			INCH	METRIC	3 PLACE	± .005	± ---	2 PLACE	± .01	± 0.13	1 PLACE	± ---	± 0.25	FUNNEL ENTRY SEAMLESS NYLAKRIMP BUTT CONNECTOR	
	INCH	METRIC													
3 PLACE	± .005	± ---													
2 PLACE	± .01	± 0.13													
1 PLACE	± ---	± 0.25													
DRAFT WHERE APPLICABLE MUST REMAIN WITHIN DIMENSIONS		<table border="1"> <tr> <td colspan="2">molex ETC INC. PINELLAS PARK, FLA. 33781 U.S.A.</td> <td>SHEET NO.</td> <td>DATE</td> </tr> <tr> <td colspan="2"></td> <td>1 OF 1</td> <td>00/07/18</td> </tr> </table>		molex ETC INC. PINELLAS PARK, FLA. 33781 U.S.A.		SHEET NO.	DATE			1 OF 1	00/07/18				
molex ETC INC. PINELLAS PARK, FLA. 33781 U.S.A.		SHEET NO.	DATE												
		1 OF 1	00/07/18												
PART NO. SEE TABLE		DRWG. NO. SD-19202-001													
DRWG. BY: HEB	CHK'D. BY: RWD	THIS DRAWING CONTAINS INFORMATION THAT IS PROPRIETARY TO MOLEX-ETC INC. AND SHOULD NOT BE USED WITHOUT WRITTEN PERMISSION.													
APP'D. BY: RWD	SCALE: NO:NE	FILE NAME: SD19202001 DGN	DIV. ET SIZE B												

A	RELEASE NEW DOC. ETC2001-0075 2000/07/18 HEB
LTR.	REVISIONS