

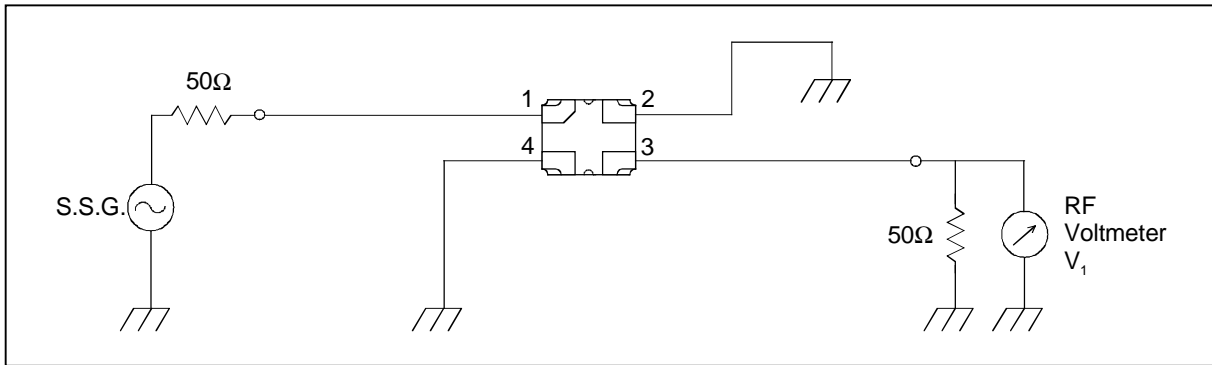
SAW FILTER FOR US-PCS (Tx)

Murata part number : SAFSE1G88KC0T00

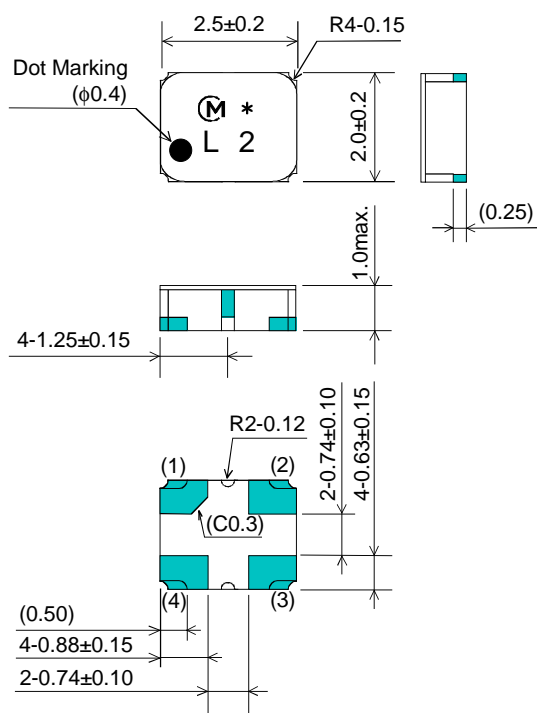
Feature

1. High Attenuation (at 1930 to 1990MHz ; 18 dB min.)
2. Small SMD package (2.5x2.0mm package)

Test Circuit



Package Dimensions



Marking
: Laser Printing

(1) : Input
 (3) : Output
 Others : Ground

Unit : mm

Specification

| Item | Specification | |
|--|---------------|--------|
| | -30 to +85°C | typ. |
| Nominal Center Frequency(f_c) | 1880 MHz | |
| Insertion Loss (1850 to 1910 MHz) | 5.0 dB max. | 3.5 dB |
| Absolute Attenuation | | |
| 1) 0.1 to 1800 MHz | 20 dB min. | 28 dB |
| 2) 1930 to 1990 MHz | 18 dB min. | 27 dB |
| 3) 2100 to 2400 MHz | 25 dB min. | 39 dB |
| 4) 3700 to 3820 MHz | 20 dB min. | 25 dB |
| 5) 5550 to 5730 MHz | 14 dB min. | 18 dB |
| Ripple Deviation (1850 to 1910 MHz) | 3.5 dB max. | 2.0 dB |
| VSWR (1850 to 1910 MHz) | 2.2 max. | 1.9 |
| Input/Output Impedance (nominal) | 50Ω | |

SAW FILTER FOR US-PCS (Tx)

Murata part number : SAFSE1G88KC0T00

Frequency Performance

