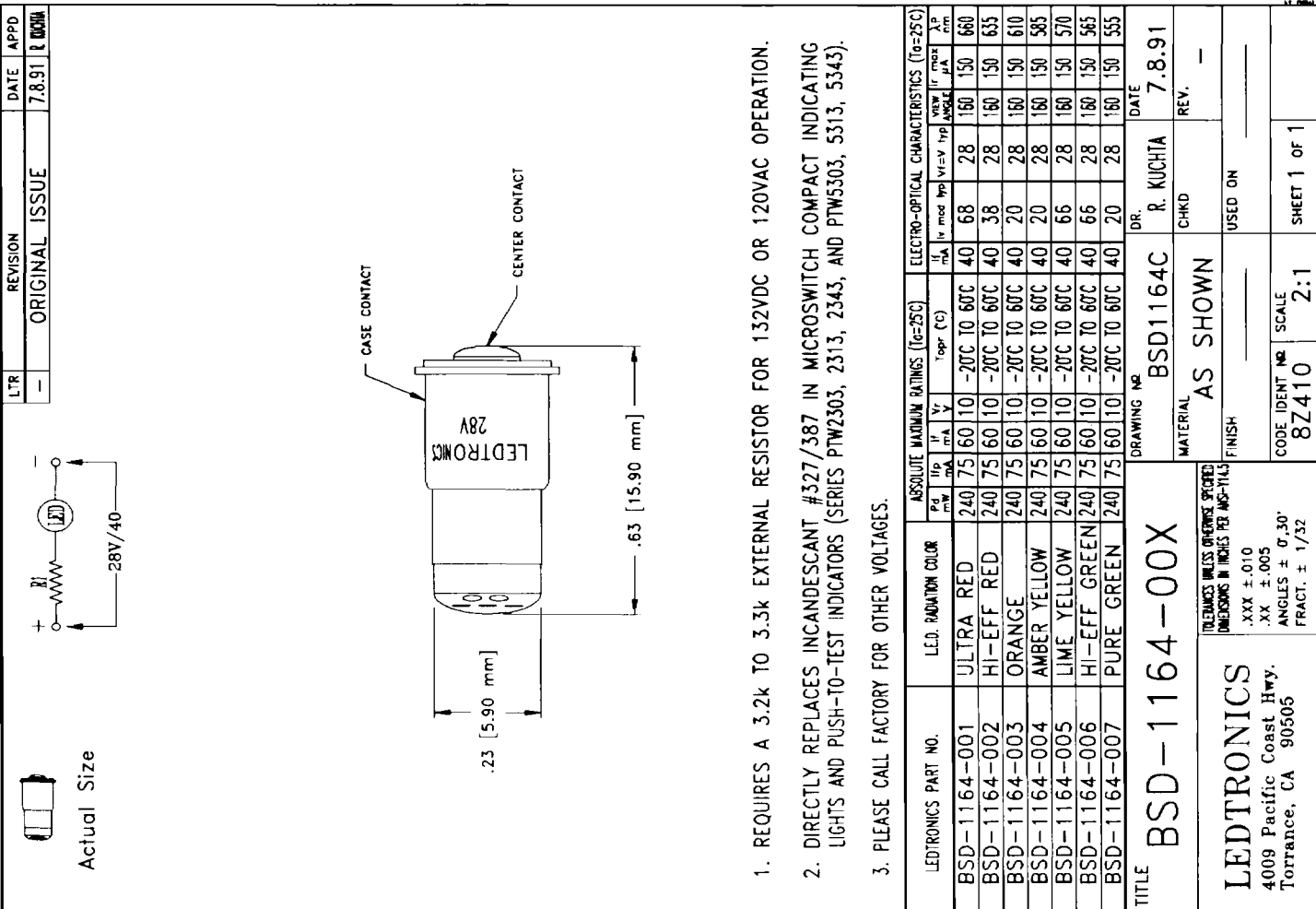


NOTES:

1. RPNL-1030 SERIES RELAMPABLE LED PILOT LIGHTS ARE DESIGNED TO BE DIRECTLY INTERCHANGEABLE WITH GE ET16 PILOT LIGHTS IN 48VDC APPLICATIONS ONLY.
2. RPNL-1030 SERIES HAS MTC. HOLE OF #.625. IT CAN BE USED IN PANEL THICKNESS RANGE OF .040 TO .280.
3. RPNL-1030 SERIES USES A 28V BIPOLAR DC LED CLUSTER LAMP AND IS NOT INTERCHANGEABLE WITH INCANDESCENT NO. 1835.
4. FOR DIRECT VOLTAGE APPLICATIONS REQUIRING 130VDC, 120VAC AND ANY OTHER VOLTAGES, PLEASE CALL FACTORY FOR COMPLETE PART NUMBERS.
5. LAMP HOLDER UL LISTED INDUSTRIAL CONTROL ED E68568.



1. REQUIRES A 3.2k TO 3.3k EXTERNAL RESISTOR FOR 132VDC OR 120VAC OPERATION.
2. DIRECTLY REPLACES INCANDESCENT #327/387 IN MICROSWITCH COMPACT INDICATING LIGHTS AND PUSH-TO-TEST INDICATORS (SERIES PTW3303, 2313, 2343, AND PTW5303, 5313, 5343).
3. PLEASE CALL FACTORY FOR OTHER VOLTAGES.

LEDTRONICS PART NO.	LED RADIATION COLOR	ABSOLUTE MAXIMUM RATINGS [(Ta=25°C)]			ELECTRO-OPTICAL CHARACTERISTICS [(Ta=25°C)]							
		Pd mW	I _F mA	V _F V	I _F mod mA	V _F mod V	I _F mod mA	Yp cm				
BSD-1164-001	ULTRA RED	240	75	60	10	-20°C TO 60°C	40	68	28	160	150	660
BSD-1164-002	HI-EFF RED	240	75	60	10	-20°C TO 60°C	40	38	28	160	150	635
BSD-1164-003	ORANGE	240	75	60	10	-20°C TO 60°C	40	20	28	160	150	610
BSD-1164-004	AMBER YELLOW	240	75	60	10	-20°C TO 60°C	40	20	28	160	150	585
BSD-1164-005	LIME YELLOW	240	75	60	10	-20°C TO 60°C	40	66	28	160	150	570
BSD-1164-006	HI-EFF GREEN	240	75	60	10	-20°C TO 60°C	40	66	28	160	150	565
BSD-1164-007	PURE GREEN	240	75	60	10	-20°C TO 60°C	40	20	28	160	150	555

TITLE: **BSD-1164-00X**
 DRAWING NO: **BSD1164C**
 MATERIAL: **AS SHOWN**
 FINISH: **AS SHOWN**
 DR: **R. KUCHTA**
 DATE: **7.8.91**
 CHECKED: **CHKD**
 USED ON: **USED ON**
 CODE IDENT NO: **8Z410**
 SCALE: **2:1**
 SHEET 1 OF 1

LEDTRONICS
 4009 Pacific Coast Hwy.
 Torrance, CA 90505

PRECISION UNITS OTHERWISE SPECIFIED
 DIMENSIONS IN INCHES PER ANSI-Y14.5
 .XXX ± .010
 .XX ± .005
 ANGLES ± 0.30°
 FRACT. ± 1/32