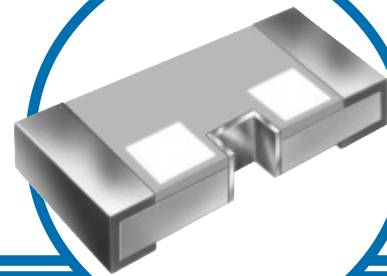


# Thin Film Surface Mount Attenuators

## PFC A1206 Attenuator Series

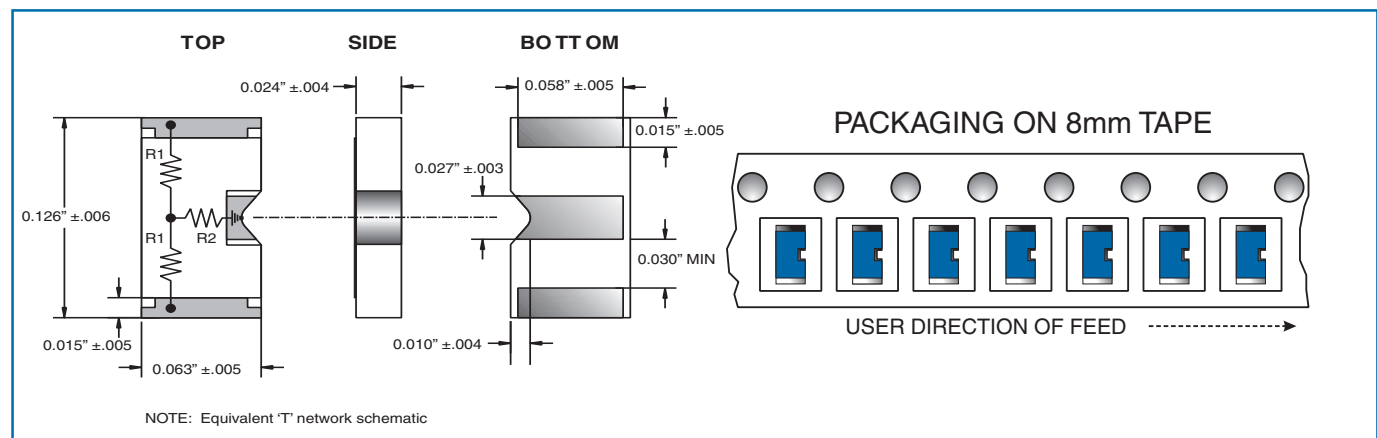
- Excellent high frequency characteristics
- Ultra-reliable TaNFilm® element
- Available in 50Ω impedance
- Absolute TCR  $\pm 100\text{ppm}/^\circ\text{C}$



## Electrical Data

Attenuation	Impedance	Tolerance (typical from 0 to 6GHz)	TCR (ppm/°C)	Power
1dB	50Ω	$\pm 0.5\text{dB}$	$\pm 100$	0.125W
2dB	50Ω	$\pm 0.5\text{dB}$	$\pm 100$	0.125W
3dB	50Ω	$\pm 0.5\text{dB}$	$\pm 100$	0.125W
4dB	50Ω	$\pm 0.5\text{dB}$	$\pm 100$	0.125W
5dB	50Ω	$\pm 0.5\text{dB}$	$\pm 100$	0.125W
6dB	50Ω	$\pm 0.5\text{dB}$	$\pm 100$	0.125W
7dB	50Ω	$\pm 0.5\text{dB}$	$\pm 100$	0.125W
8dB	50Ω	$\pm 0.5\text{dB}$	$\pm 100$	0.125W
9dB	50Ω	$\pm 0.5\text{dB}$	$\pm 100$	0.125W
10dB	50Ω	$\pm 0.5\text{dB}$	$\pm 100$	0.125W
20dB	50Ω	$\pm 0.5\text{dB}$	$\pm 100$	0.125W

## Outline and Packaging Data



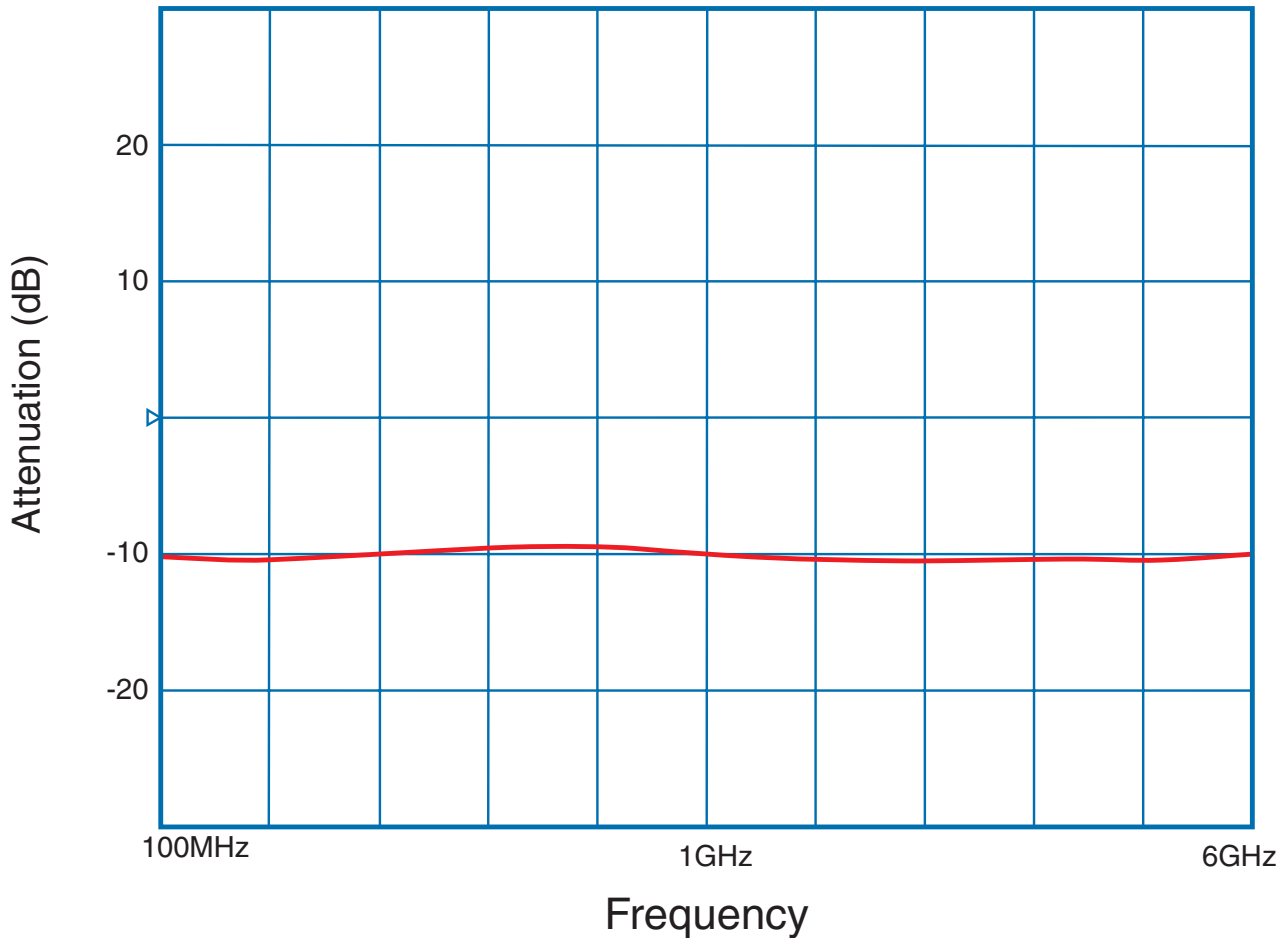
### General Note

IRC reserves the right to make changes in product specification without notice or liability. All information is subject to IRC's own data and is considered accurate at time of going to print.

© IRC Advanced Film Division • Corpus Christi Texas 78411 USA  
 Telephone: 361 992 7900 • Facsimile: 361 992 3377 • Email: afdsales@ircct.com • Website: www.ircct.com

# Thin Film Surface Mount Attenuators

Insertion Loss ( $S_{21}$ ) at -10dB Attenuation



## Ordering Data

Prefix . . . . . **PFC** - **A1206** - **01** - **50R0** - **10D0** - **D**

Model . . . . .  
A1206

TCR Code . . . . .  
01 =  $\pm 100$ ppm/ $^{\circ}$ C

Impedance Code . . . . .  
50R0 = 50 $\Omega$

• Attenuation Tolerance  
D =  $\pm 0.5$ dB

• Attenuation Code  
1D00 = 1dB, 2D00 = 2Db, 3D00 = 3dB,  
4D00 = 4dB, 5D00 = 5Db, 6D00 = 6dB,  
7D00 = 7dB, 8D00 = 8Db, 9D00 = 9dB,  
10D0 = 10dB, 20D0 = 20dB

For additional information or to discuss your specific requirements, please contact our Applications Team using the contact details below.