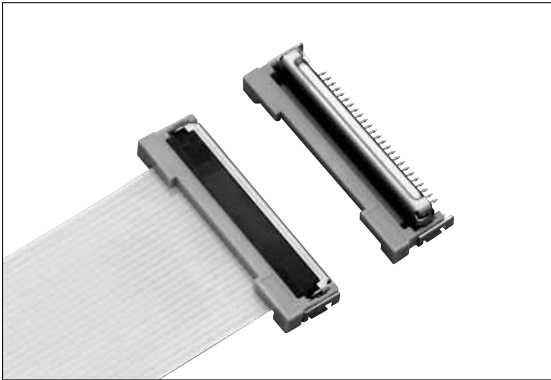


FPC Connector

EC-10 Series 1.0mm Spacing, Easy Flip Lock Type (SMT)



■ Features

1. The FPC-fixation lever is of our own easy flip lock system where the locking action is completed by sliding the cover with the rotating lever, resulting in better operability (a structure where the cover moves in conjunction with the lever).
2. Provision of a prevention mechanism for an unintentional FPC/FFC disconnection and incomplete insertion.
3. Convenient bottom contact design.
4. Only 3.5mm high when mounted.
5. Of the ZIF structure.
6. Supplied in emboss-tape packaging for automatic mounting.

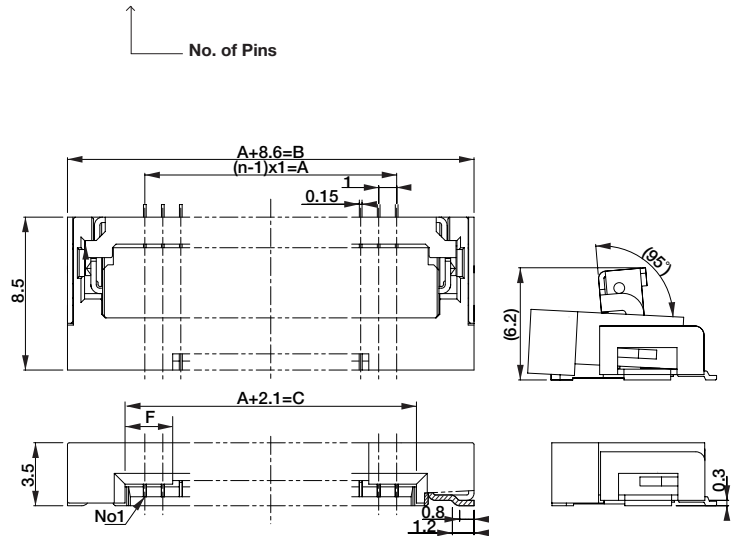
■ Specifications

1. Rating : 1.0A, 50V AC/DC
2. Contact Resistance : 30m Ω, max., initially
3. Insulation Resistance : 1000M Ω, min. at 500V DC
4. Withstanding Voltage : 500V AC for one minute
5. Operating Temperature Range : -30°C to +105°C

■ Material and Plating

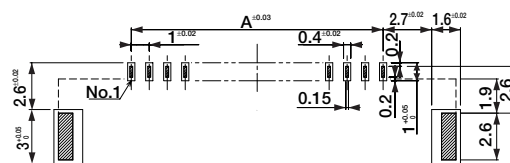
- Housing : Polyphenylene Sulfide (PPS), BLACK, 94V-0
- Cover : Polyphenylene Sulfide (PPS), 94V-0
- Lever : Use Steel Stainless (SUS)
- Contact : Cu Alloy, Au Plating
- Hold-down : Cu Alloy, Sn Alloy Plating

● CFP84 -0452F

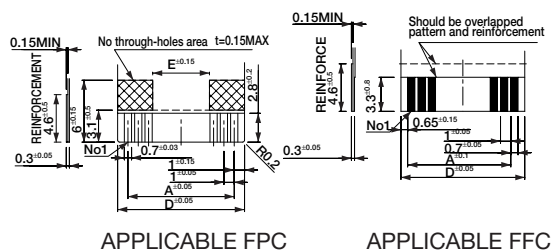


<input type="checkbox"/> <input type="checkbox"/> No. of Pins	A	B	C	D	E	F
8	7.0	15.6	9.1	9.0	2.7	3
11	10.0	18.6	12.1	12.0	5.7	3
16	15.0	23.6	17.1	17.0	10.7	3
20	19.0	27.6	21.1	21.0	14.7	3
22	21.0	29.6	23.1	23.0	14.7	4
25	24.0	32.6	26.1	26.0	17.7	4
30	29.0	37.6	31.1	31.0	22.7	4

■ P.C. Board Dimension



■ Applicable FPC/FFC Dimension (t=0.3±0.05)



- FPC plating to recommend : Au plating