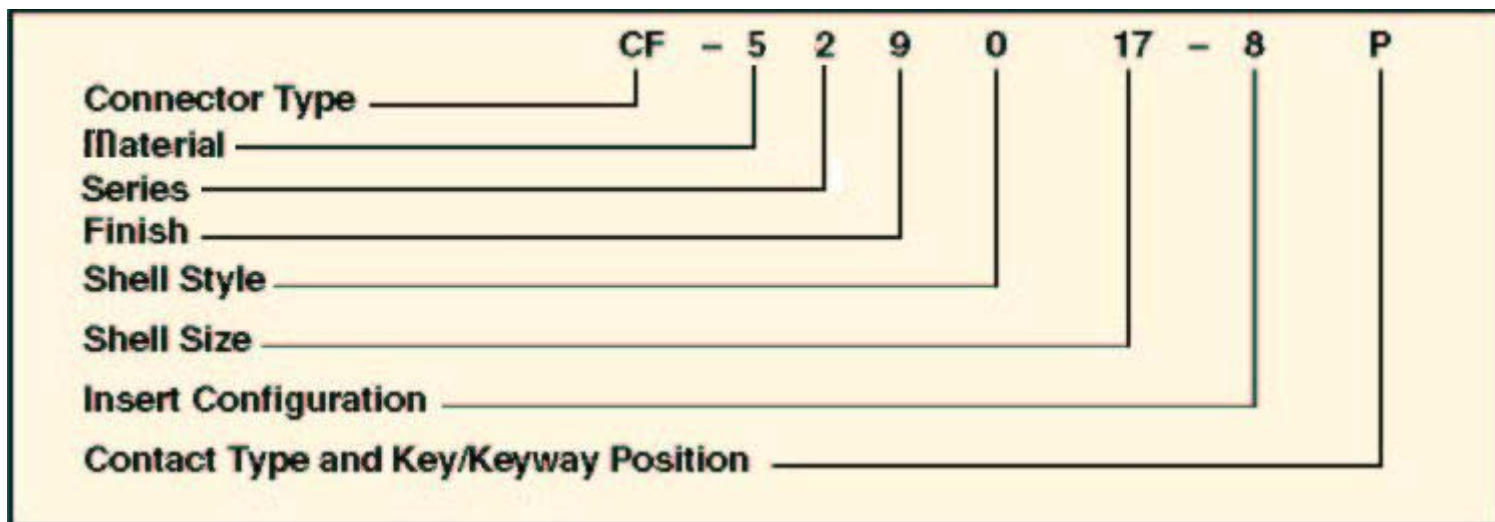


Multi-Channel Fiber Optic Cylindrical Connectors



Connector Type:

CF designates Multi-Channel Fiber Optic Connector

Material:

5 designates aluminum shell
 6 designates composite shell
 8 designates stainless steel shell

Series:

0 designates Tight Tolerance Connector
 2 designates D38999 Enhanced Fiber Optic Connector
 7 designates ARINC 801 Style Connector
 9 designates Cylindrical MT Style Connector

Finish:

4 designates electroless nickel
 5 designates unplated composite
 6 designates stainless steel
 9 designates O.D. cadmium

Shell Style:

0 designates wall mount receptacle
 2 designates box mount receptacle
 6 designates straight plug
 7 designates jam nut receptacle

Shell Size

See Insert Availability (preceding pages)

Insert Configuration

See Insert Availability (preceding pages)

Contact Type and Key/Keyway Position

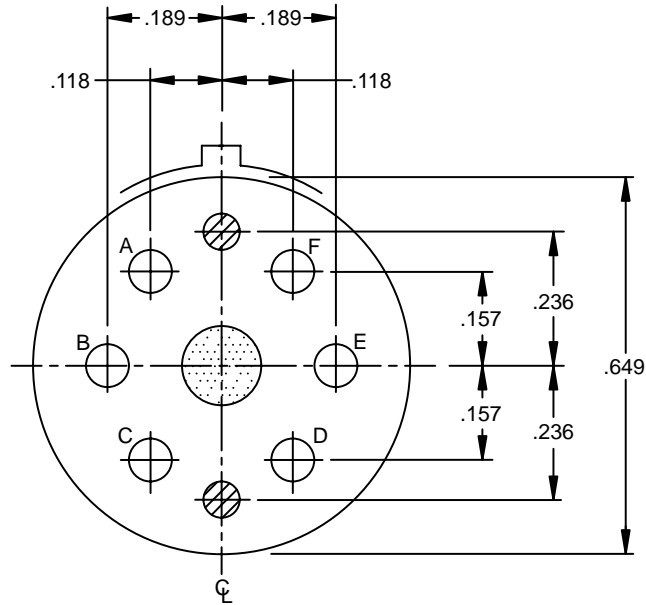
P designates pin contacts
 S designates socket contacts



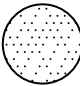
For key/keyway positioning choose alternate rotation suffix letter from the chart below.

Alternate Position Suffix

Alternate Position	Suffix Letter	
	Pins	Sockets
Normal	P	S
A	G	H
B	I	J
C	K	L
D	M	N
E	R	T

BCAG	F	BD&SG	N	BH	N						
NEW DESIGN APPROVAL: P=PARTIAL, F=FULL, N=NONE											



-  LOCATION OF FIBER OPTIC TERMINUS
-  LOCATION OF ALIGNMENT PIN
-  LOCATION OF HOLE FOR SLEEVE HOLDER MOUNTING SCREW

INSERT ARRANGEMENT 15-06

TECHNICAL CHANGES IDENTIFIED BY REVISION BAR.

DATE 30-APR-2003 REV (A) 09-JUN-2003

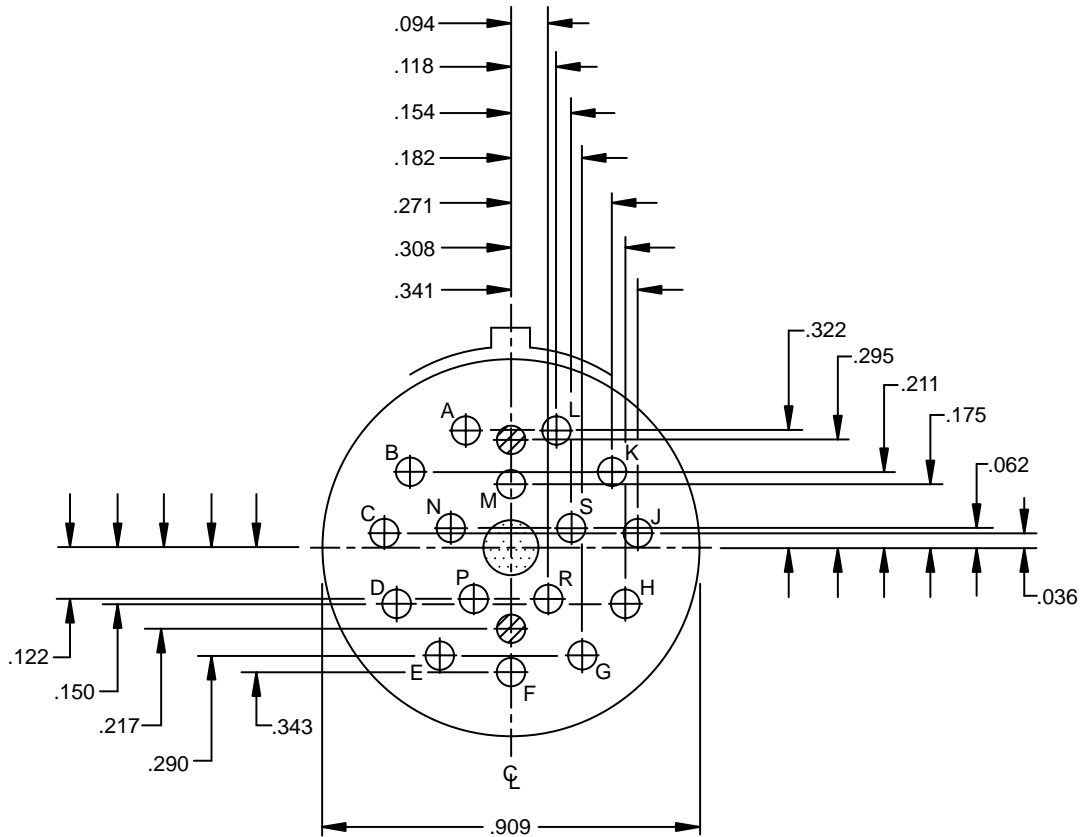
CAGE CODE 81205



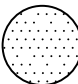
BAC110AT
SH 1 OF 3

**INSERT ARRANGEMENT,
CONNECTOR, FIBER OPTIC,
CIRCULAR**

BAC110AT
SH 1 OF 3

FOR STATUS OF INACTIVATION
SEE APPLICABILITY BLOCK



-  LOCATION OF FIBER OPTIC TERMINUS
-  LOCATION OF ALIGNMENT PIN
-  LOCATION OF THREADED HOLE FOR SLEEVE INSERT MOUNTING SCREW

INSERT ARRANGEMENT 21-16

DIMENSIONING AND TOLERANCING PER ANSI Y14.5M-1994.
TOLERANCES: $\pm .002$ UNLESS OTHERWISE SPECIFIED.
DIMENSIONS IN INCHES UNLESS OTHERWISE NOTED.

TABLE I

INSERT ARRANGEMENT NUMBER	SHELL SIZE	NUMBER OF TERMINI
15-06	15	6
21-16	21	16

DATE 30-APR-2003 REV (A) 09-JUN-2003

CAGE CODE 81205

BAC110AT
SH 2

**INSERT ARRANGEMENT,
CONNECTOR, FIBER OPTIC,
CIRCULAR**

BAC110AT
SH 2