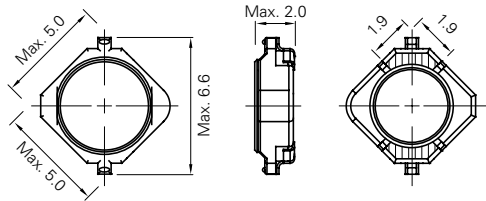


SMD TYPE CDC Series Inductors for EL Driver

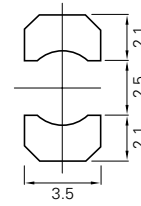
OUTLINE

SMD type small size inductors.

CDC4D20



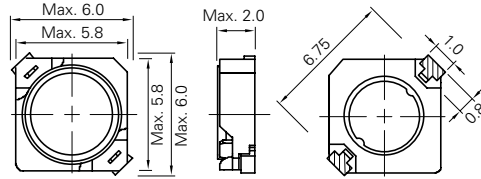
LAND PATTERNS (mm)



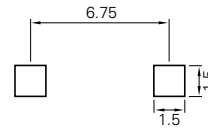
CONSTRUCTION



CDC5D20



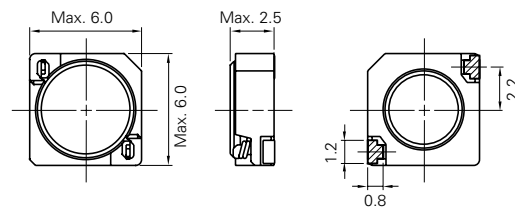
LAND PATTERNS (mm)



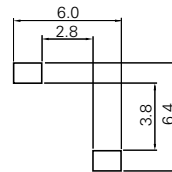
CONSTRUCTION



CDC5D23B



LAND PATTERNS (mm)



CONSTRUCTION



TYPE : CDC4D20, CDC5D20, CDC5D23B

Parts No.	L (H)	CDC4D20		CDC5D20		CDC5D23B	
		D.C.R.(Ω) : Max.	Rated Current (A) *1	D.C.R.(Ω) : Max.(Typ.)	Rated Current (A) *1	D.C.R.(Ω) : Max.(Typ.)	Rated Current (A) *1
2R2	2.2μ					39m(30m)	2.16
2R7	2.7μ					44m(34m)	2.08
3R3	3.3μ					49m(38m)	1.90
3R9	3.9μ					56m(43m)	1.84
4R7	4.7μ					62m(48m)	1.60
5R6	5.6μ					78m(60m)	1.44
6R8	6.8μ					91m(70m)	1.36
8R2	8.2μ					103m(87m)	1.12
100	10μ					133m(102m)	1.04
120	12μ					148m(114m)	960m
150	15μ					166m(128m)	880m
180	18μ					213m(164m)	770m
220	22μ					248m(191m)	730m
270	27μ					328m(252m)	640m
330	33μ					378m(291m)	580m
390	39μ					438m(337m)	540m
470	47μ					546m(420m)	490m
560	56μ					621m(478m)	450m
680	68μ					715m(550m)	410m
820	82μ					1.00(772m)	350m
101	100μ	1.77	230m			1.07(820m)	330m
121	120μ	1.97	220m			1.25(960m)	320m
151	150μ	2.61	195m			1.66(1.28)	260m
181	180μ	2.73	195m			1.90(1.46)	230m
221	220μ	3.20	180m			2.44(1.88)	210m
271	270μ	3.66	165m			2.73(2.10)	190m
331	330μ	5.16	135m				
391	390μ	5.66	135m				
471	470μ	7.30	110m	5.8(4.5)	140m		
561	560μ	8.40	105m	7.0(5.4)	125m		
681	680μ	9.60	90m	8.6(6.6)	115m		
821	820μ	14.1	75m	11.0(9.0)	105m		
102	1.0m	16.2	70m	13.0(10.0)	100m		
122	1.2m	18.6	65m	15.0(11.0)	90m		
152	1.5m	23.8	55m	21.0(16.0)	70m		
182	1.8m	27.1	55m				
222	2.2m	31.6	50m	27.0(21.0)	65m		
272	2.7m	38.9	45m	36.0(28.0)	55m		
332	3.3m	43.7	40m	41.0(31.0)	50m		
392	3.9m	50.9	40m	50.0(38.0)	45m		
472	4.7m	72.1	35m	62.0(47.0)	40m		
562	5.6m			74.0(57.0)	35m		

Measuring Freq. (L)

CDC4D20 1kHz
 CDC5D20 100kHz
 CDC5D23B 100kHz

Tolerance of Inductance

CDC4D20 100μH - 4.7mH ± 10% (K)
 CDC5D20 470μH - 5.6mH ± 10% (K)
 CDC5D23B 2.2μH - 8.2μH ± 20% (M), 10μH - 12μH ± 15% (L), 15μH - 270μH ± 10% (K)

Rated Current

*1 It is either the inductance is 10% lower than its initial value in D.C. saturation characteristics or temperature raise becomes ΔT=40°C (Ta=20°C), whichever is lower.

About Lead-free products

· Lead-free products are now available for sale
 · To order a lead-free product, please add " NP " after the product type
 e.g. Ordering code of lead product : Type name-△△△○×
 Ordering code of lead-free product : Type name NP △△△○×

Ordering Code

CDC4D20 - △△△○×

△ : Parts No. ○ : Tolerance of inductance × : Packing
 K (10%) C (Carrier tape)
 L (15%) B (Box)
 M (20%)