

DATA SHEET

LEADED POWER RESISTORS

KP – Stand off wirewound

UP TO 8.0 W



Product Specification – Jun. 18, 2003 V.0



Power Wirewound Resistors
radial, fibre glass core, coated

Specification

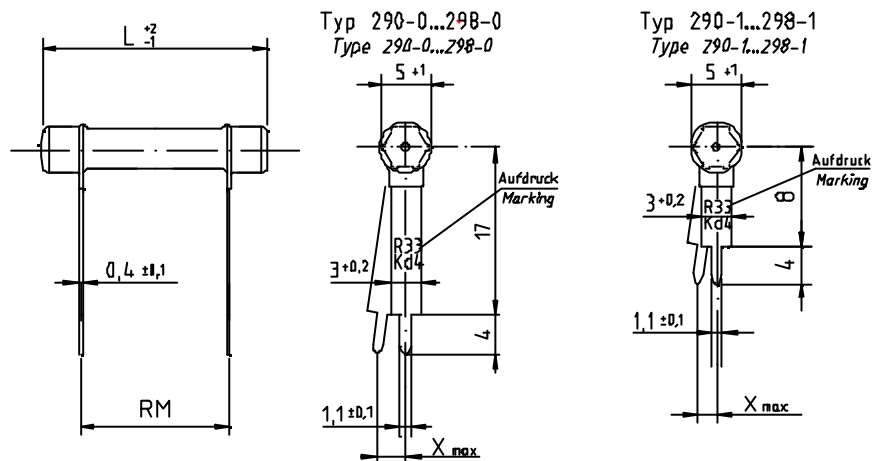
Type		KP290	KP292	KP294	KP296	KP298
Style		0518	0523	0533	0543	0553
Power rating P_{70}	W	2,0	4,0	5,0	6,5	8,0
Resistance range	Ω	0R10...7K5	0R15...11K	0R27...20K	0R39...27K	0R47...36K
E-series		E 24/E 12	E 24/E 12	E 24/E 12	E 24/E 12	E 24/E 12
Tolerance	%	± 10 $\pm 5 \geq R20$	± 10 $\pm 5 \geq R30$	± 10 $\pm 5 \geq R47$	± 10 $\pm 5 \geq R68$	± 10 $\pm 5 \geq R91$
Temperature coefficient	$10^{-6} * K^{-1}$			- 80 ... + 500		
max. cont. working voltage	V_{RMS}		$\sqrt{P_{70} \cdot R}$	for all styles		
Insulation voltage (1min.)	V_{RMS}			max. 75		
Insulation resistance	Ω			not insulated		
Derating linear	$^{\circ}C$			70 ... 350 (0W)		
Climatic category				55/200/56		
Temperature range	$^{\circ}C$			- 55 ... 350		
Thermal resistance	KW^{-1}	110	70	60	50	40
Failure rate (Total, ϑ_0 max. 60% conf. lev.)	$10^{-9} * h^{-1}$			appr. 100, depends on value		
Endurance (P_{70} , 70 $^{\circ}C$, 1000h)	$\left[\frac{\Delta R}{R} \right]$ %			$\pm 3,0$ average		
Damp heat, steady state (40 $^{\circ}C$, 93% r. h., 56d)	$\left[\frac{\Delta R}{R} \right]$ %			$\pm 2,0$		
Climatic sequence	$\left[\frac{\Delta R}{R} \right]$ %			$\pm 2,0$		
Terminal strength	$\left[\frac{\Delta R}{R} \right]$ %			$\pm 1,0$		

Series KP

Power Wirewound Resistors radial, fibre glass core, coated

Type		KP290	KP292	KP294	KP296	KP298
Terminal tensile strength	N	40				
Resistance to soldering heat (260°C, 10s)	$\left[\frac{\Delta R}{R}\right]$ %	± 0,2 typ.				
Solderability		solderable according to IEC 60068-2-20Ta				
Marking		on termination; value 3 digits, Tolerance, Production date code				

Dimensions in mm:

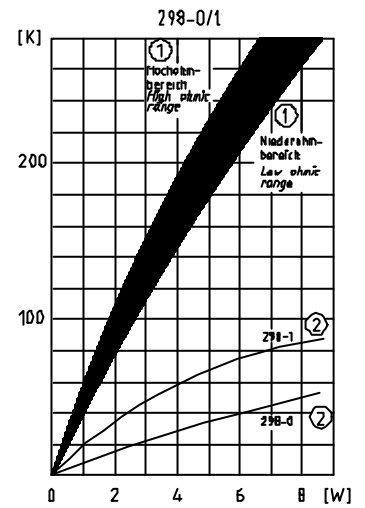
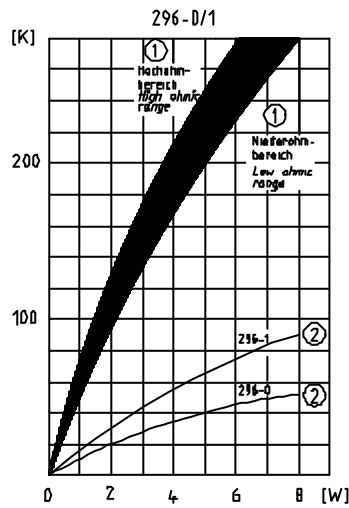
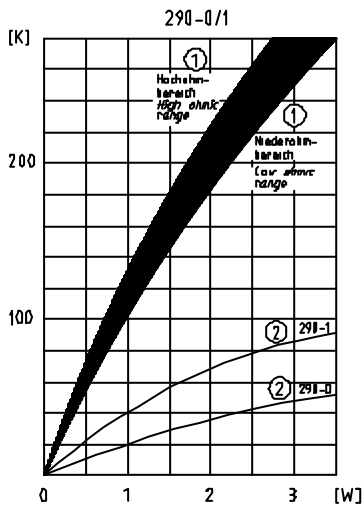
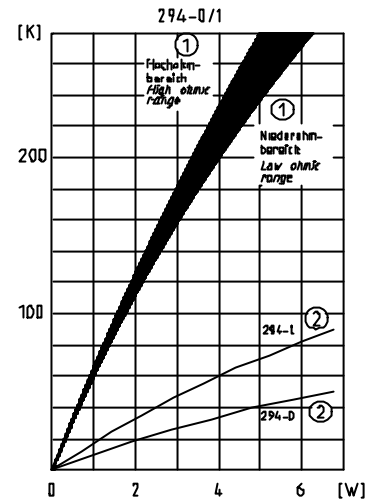
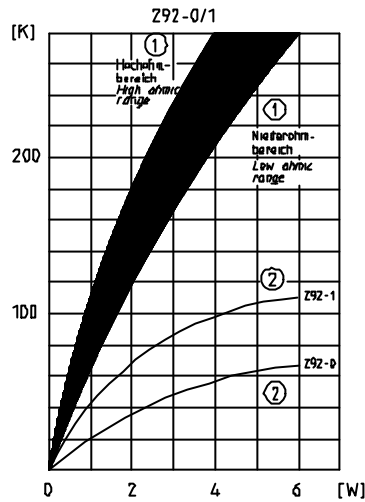
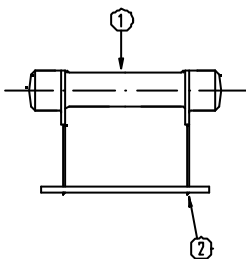


type	L	RM
KP290-0/1	18,2	10
KP292-0/1	23,3	15
KP294-0/1	33,4	25
KP296-0/1	43,5	35
KP298-0/1	53,7	45

Type	RM Tolerance	X _{max} .
KP29x-0	± 1,0	3,0
KP29x-1	± 0,8	1,7

Power Wirewound Resistors
 radial, fibre glass core, coated

Temperatur rise:
 (hot-spot + solder joints)



Series KP

Power Wirewound Resistors radial, fibre glass core, coated

Packaging:

Type	Packaging	Pieces	Pack.-Code
KP290-0 KP290-1	bulk	250 450	B
KP292-0 KP292-1	bulk	200 300	B
KP294-0 KP294-1	bulk	100 200	B
KP296-0 KP296-1	bulk	100 125	B
KP298-0 KP298-1	bulk	75 100	B

Ordering example: KP 294-1 5 B 1K3
 Type Tolerance Pack.-Code R-Value