

DESIGNED & DIMENSIONED
IN MILLIMETERS [INCHES]

ADP5-01SP1-13GJ1

IMPEDENCE
5: 50 OHM

-01SP1: SMA STRAIGHT PLUG

END2
-13GJ1: GRF STRAIGHT JACK

DO NOT
SCALE FROM
THIS PRINT

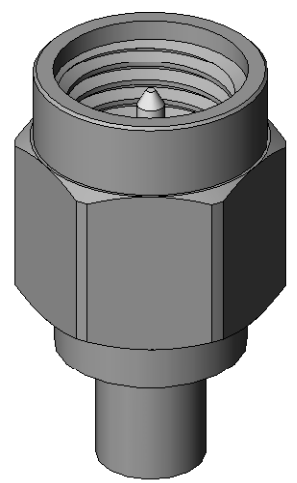
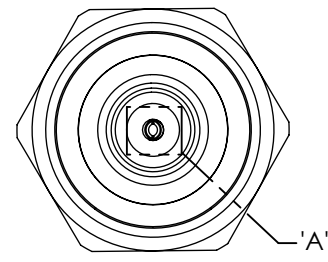
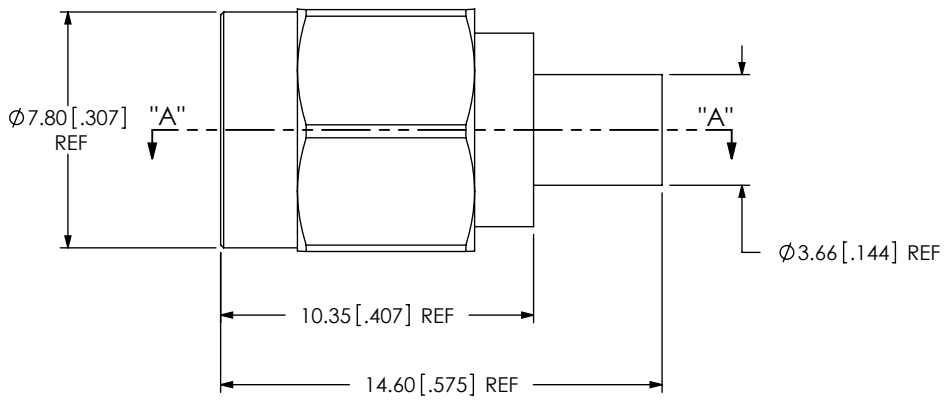
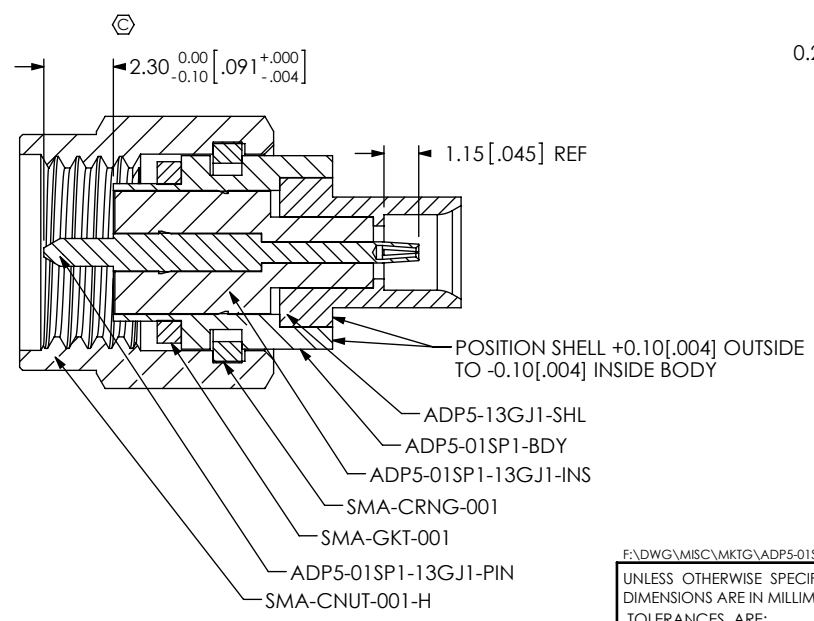
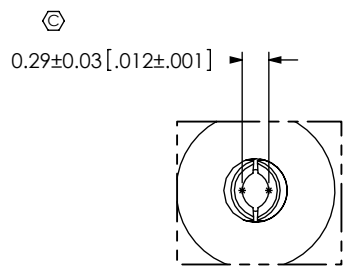


FIG. 1
ADP5-01SP1-13GJ1



SECTION "A"- "A"



DETAIL 'A'
SCALE 12:1

- NOTES:
1. Ⓢ REPRESENTS A CRITICAL DIMENSION.
 2. PUSHOUT FORCE FOR CENTER CONTACT: 26.69 N [6.00 LB] MIN.
 3. SEE PLATING STANDARD #CO-PL-FRM-7001-M.

F:\DWG\MISC\MKTG\ADP5-01SP1-13GJ1-MKT.SLDDRW

UNLESS OTHERWISE SPECIFIED,
DIMENSIONS ARE IN MILLIMETERS.
TOLERANCES ARE:
DECIMALS ANGLES
X.X: ±0.3 [.01] 2°
X.XX: ±0.05 [.002]
X.XXX: ±0.025 [.0010]

PROPRIETARY NOTE
THIS DOCUMENT CONTAINS INFORMATION
CONFIDENTIAL AND PROPRIETARY TO
SAMTEC, INC. AND SHALL NOT BE REPRODUCED
OR TRANSFERRED TO OTHER DOCUMENTS OR
DISCLOSED TO OTHERS OR USED FOR ANY
PURPOSE OTHER THAN THAT WHICH IT WAS
OBTAINED WITHOUT THE EXPRESSED WRITTEN
CONSENT OF SAMTEC, INC.

**THIS PRODUCT MANUFACTURED
WITH LEAD-FREE PROCESSING**

samtec

520 PARK EAST BLVD., NEW ALBANY, IN 47150
PHONE: 812-944-6733 FAX: 812-948-5047
e-Mail: info@SAMTEC.com code 55322

MATERIAL: DO NOT SCALE DRAWING SHEET SCALE: 4:1
BODY: BeCu
CONTACT: COPPER ALLOY
DIELECTRIC: PTFE

DESCRIPTION:
SMA STR PLUG TO GRF STR JACK, 50 OHM

DWG. NO. ADP5-01SP1-13GJ1

BY: ALVIN W 06/27/2010 SHEET 1 OF 1