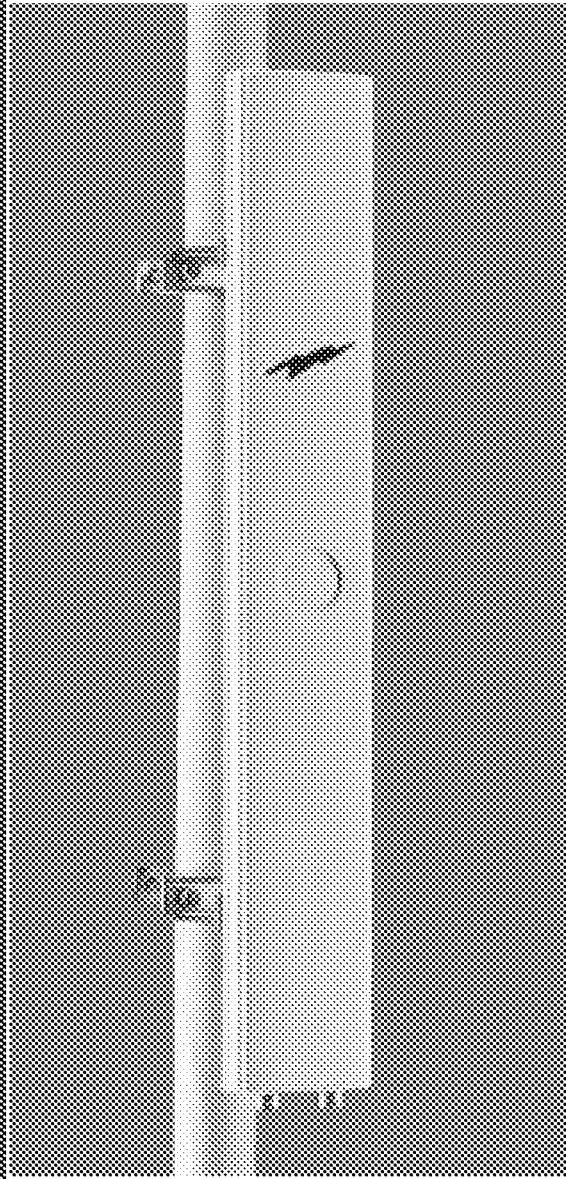


Base Station Antennas



Dual Polarized Panel Antennas for Polarization Diversity

Dual Polarized Panel Antennas are the high performance solution to cell coverage, especially where aesthetics are of primary importance.

PCSD Panel Antennas from Andrew are designed for modern PCS base stations. New technology brings high performance and a trim profile enhances antenna aesthetics.

Dual Polarization allows for receive diversity without the need for large structures on top of the tower.

Polarization diversity is a proven attractive alternative to space diversity techniques.

Key Performance Advantages of Andrew PCSD 1800/1900 Panel Antennas include:

Superior main-lobe/side difference:

- *Better carrier signal to interference ratio (C/I)*

Mechanical Features:

- *Low weight and low wind load for ease of installation*
- *Slim profile for aesthetic acceptability*





Base Station Antennas

Dual Polarized Panel Antennas Characteristics

Model Numbering System

For example:

PCSD19SA - 06814 - xyz

① ② ③

PCSD19SA - 06814 -0DW

- ① application and frequency band: 18 = 1710-1880, 19 = 1850 - 1990 MHz product revision code: A, B, C etc.
- ② azimuth 3dB beamwidth: 068, nominal gain (dBd): 14, 16, etc.
- ③ x = electrical downtilt (degrees): 0° to 9°, A (10°), B (11°), etc.
y = connector: D (7-16 DIN).
z = color - w = white, other colors optional.

Environmental Characteristics

Humidity: Up to 100%
Lightning Protection: DC ground

Electrical Characteristics

Frequency Range: 1710 - 1990 MHz
Impedance: 50 ohms
Return Loss (VSWR): <15
Azimuth Beamwidths: 3 dB at 68° or 3 dB at 85°
Elevation Upper Sidelobes: <18 dB
Power: Continuous >200 W
Peak >4 kW

PCS 1800 Dual Polarized Panel Antennas

Model Number*	Az Beamwidth degrees	EI Beamwidth degrees	Nominal Gain dBd (dBi)	Downtilt degrees	Weight lbs (kg)	Length in (mm)	Width in (mm)	Depth in (mm)
PCSD18SB-06813-0DZ	68	9.5	13.3 (15.4)	0	5.5 (2.5)	43.3 (1100)	5.1 (130)	2.8 (70)
PCSD18SB-06816-0DZ	68	5.5	15.6 (17.7)	0	11.0 (5.0)	68 (1730)	5.1 (130)	2.8 (70)
PCSD18SB-06816-2DZ	68	5.5	15.6 (17.7)	2	11.0 (5.0)	68 (1730)	5.1 (130)	2.8 (70)
PCSD18SB-06816-4DZ	68	5.5	15.4 (17.5)	4	11.0 (5.0)	68 (1730)	5.1 (130)	2.8 (70)
PCSD18SB-08512-0DZ	85	9.5	12.3 (14.4)	0	5.5 (2.5)	43.3 (1100)	5.1 (130)	2.8 (70)
PCSD18SB-08514-0DZ	85	5.5	14.6 (16.7)	0	11.0 (5.0)	68 (1730)	5.1 (130)	2.8 (70)
PCSD18SB-08514-2DZ	85	5.5	14.6 (16.7)	2	11.0 (5.0)	68 (1730)	5.1 (130)	2.8 (70)
PCSD18SB-08514-4DZ	85	5.5	14.4 (16.5)	4	11.0 (5.0)	68 (1730)	5.1 (130)	2.8 (70)

* Part number shown reflects 7-16 DIN connectors

PCS 1900 Dual Polarized Panel Antennas

Model Number*	Az Beamwidth degrees	EI Beamwidth degrees	Nominal Gain dBd (dBi)	Downtilt degrees	Weight lbs (kg)	Length in (mm)	Width in (mm)	Depth in (mm)
PCSD19SB-06813-0DZ	68	9.5	13.3 (15.4)	0	5.5 (2.5)	43.3 (1100)	5.1 (130)	2.8 (70)
PCSD19SB-06816-0DZ	68	5.5	15.6 (17.7)	0	11.0 (5.0)	68 (1730)	5.1 (130)	2.8 (70)
PCSD19SB-06816-2DZ	68	5.5	15.6 (17.7)	2	11.0 (5.0)	68 (1730)	5.1 (130)	2.8 (70)
PCSD19SB-06816-4DZ	68	5.5	15.4 (17.5)	4	11.0 (5.0)	68 (1730)	5.1 (130)	2.8 (70)
PCSD19SB-08512-0DZ	85	9.5	12.3 (14.4)	0	5.5 (2.5)	43.3 (1100)	5.1 (130)	2.8 (70)
PCSD19SB-08514-0DZ	85	5.5	14.6 (16.7)	0	11.0 (5.0)	68 (1730)	5.1 (130)	2.8 (70)
PCSD19SB-08514-2DZ	85	5.5	14.6 (16.7)	2	11.0 (5.0)	68 (1730)	5.1 (130)	2.8 (70)
PCSD19SB-08514-4DZ	85	5.5	14.4 (16.5)	4	11.0 (5.0)	68 (1730)	5.1 (130)	2.8 (70)

* Part number shown reflects 7-16 DIN connectors

