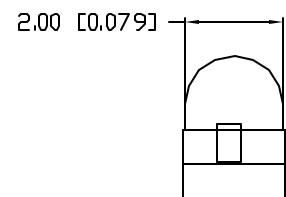
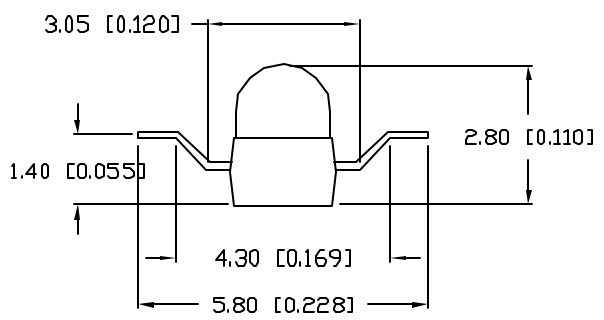


ELECTRO-OPTICAL CHARACTERISTICS  $T_A=25^\circ\text{C}$

PARAMETER	SYMBOL	TEST CONDITION	MIN	TYP	MAX	UNIT
OPEN CIRCUIT VOLTAGE	$V_{oc}$	$E_e=5\text{mw/cm}^2$		0.42		V
SHORT CIRCUIT CURRENT	$I_{sc}$	$E_e=5\text{mw/cm}^2$		15		$\mu\text{A}$
DARK CURRENT	$I_d$	$V_r=10\text{V}$			10	nA
TERMINAL CAPACITANCE	$C_t$	$V_r=5\text{V}, F=1\text{MHz}$		5		pF
RESPONSE TIME	$T_r/T_f$	$V_r=10\text{V}, R_l=100\Omega$		6/6		nS
SPECTRAL SENSITIVITY	$\lambda$			730~1200		nm
PEAK WAVELENGTH	$\lambda_p$			980		nm
HALF ANGLE	$\Delta\theta$			$\pm 20$		DEG
LENS COLOR:				BLACK		



LIMITS OF SAFE OPERATION AT 25°C

PARAMETER	MAX	UNITS
REVERSE VOLTAGE	32	V
POWER DISSIPATION	150	mW
OPERATING TEMP.	-25 TO +85	°C
STORAGE TEMP.	-40 TO +85	°C
SOLDERING TEMP.	+260	°C
2.0mm FROM BODY		3 SEC. MAX

\*UNLESS OTHERWISE SPECIFIED TOLERANCES PER DECIMAL PRECISION ARE: X=±1 (±0.039), XX=±0.5 (±0.020), XXX=±0.25 (±0.010), XXXX=±0.127 (±0.005). LEAD SIZE=±0.05 (±0.002), LEAD LENGTH=±0.75 (±0.030). MIN= +DECIMAL PRECISION -0.00 MAX.= +0.00 -DECIMAL PRECISION

REV.	PART NUMBER OED-SPA227B40-TR21
------	-----------------------------------

**CONFIDENTIAL INFORMATION**  
THE INFORMATION CONTAINED IN THIS DOCUMENT IS THE PROPERTY OF LUMEX INC. EXCEPT AS SPECIFICALLY AUTHORIZED IN WRITING BY LUMEX INC., THE HOLDER OF THIS DOCUMENT SHALL KEEP ALL INFORMATION CONTAINED HEREIN CONFIDENTIAL AND SHALL PROTECT SAME IN WHOLE OR IN PART FROM DISCLOSURE AND DISSEMINATION TO ALL THIRD PARTIES.

**RELIABILITY NOTE**  
OUR MANY YEARS OF EXPERIENCE DATA ACCUMULATION INDICATE THAT SOLDER HEAT IS A MAJOR CAUSE OF EARLY AND FUTURE FAILURE. PLEASE PAY ATTENTION TO YOUR SOLDERING PROCESS.



290 E. HELEN ROAD  
PALATINE, IL 60067-6976  
PHONE: +1.847.359.2790  
US WEB: www.lumex.com  
TW WEB: www.lumex.com.tw

T- 1.7mm LEADS PHOTODIODE, Z-BEND,  
WITH DAYLIGHT FILTER.

DRAWN BY: GB	CHECKED BY:	APPROVED BY:	DATE: 7.23.02 PAGE: 1 OF 1 SCALE: N/A
-----------------	-------------	--------------	---