

## Weatherproof Patchcord Assemblies

### FOC 91 FEMALE RECEPTACLE (square flange mounting)



### FOC 91 MALE PLUG



# NEW

## Features

The Amphenol FOC 91 is a weatherproof (IP 67) 2 singlemode or multimode channels optical connector. This optical connector uses the proven mechanism of C91D. The locking system is the standard IEC 103-9 (metal screw coupling).

## Applications

- Outside telecommunication network, Links Base Station
- Video
- CATV
- Multimedia
- Industrial

MAIN CHARACTERISTICS

### FOC 91 FEMALE RECEPTACLE (rear mounting)



This product uses the standard termini ( $\varnothing$  2.5 mm) which is designed to provide a high reliability performance and economical cost for outside telecom application.

## Technical description

- Typical insertion loss :
  - Singlemode fiber : 0,5 dB
  - Multimode fiber : 0,5 dB
- Typical return loss :
  - Singlemode fiber : - 45 dB
  - Multimode fiber : - 20 dB
- Durability : 200 mating/ unmating cycles (change for <0.2dB)
- Operating temperature : -40°C, +85°C
- Locking system : metal screw coupling (IEC 103-9)
- Termini : zirconium PC ferrule ( $\varnothing$  2.5 mm)
- Weatherproof IP 67

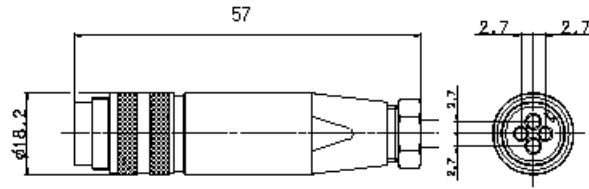
## Amphenol

# FOC 91

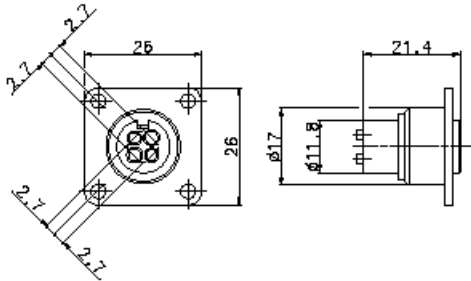
# FOC Series

## Line Drawings ( dimensions in mm )

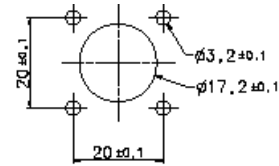
**Plug**



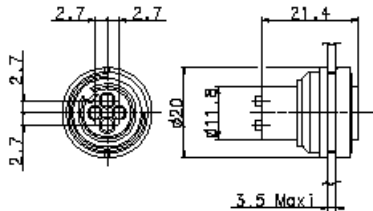
**Square flange receptacle**



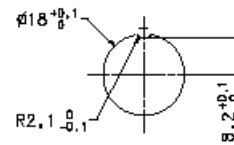
**Panel Mounting Receptacle For Square flange receptacle**



**Rear Mounting receptacle**



**Panel Mounting Receptacle For Rear Mounting Receptacle**



## How to order :

**FOC - XXX - XXXX - XX.X - XXX - XXX - XXX**

2 channel plug : 0P2  
 2 channel square flange receptacle : SR2  
 2 channel rear mounting receptacle : RR2

Multimode PC 50/125 : 50PC  
 Multimode PC 62.5/125 : 62PC  
 Singlemode PC 9/125 : 09PC  
 Singlemode APC 9/125 : 09AP

Length in meter (example 5m : 05,0)

PPC : Plug protective cap  
 RPC : Receptacle protective cap

953 : ST connector  
 954 : SC connector  
 944 : FC connector  
 0P2 : 2 channel plug

Cable :  
 600 : 6 mm only for plug  
 300 : 3 mm only for receptacle  
 009 : 0.9 mm only for receptacle

**Amphenol**