

PLEASE CHECK WWW.MOLEX.COM FOR LATEST PART INFORMATION

Part Number: [0334821202](#)
Status: **Active**
Overview: [mx150 sealed connector system](#)
Description: 3.50mm (.138") Pitch MX150™ Sealed Male Connector, Dual Row, 12 Circuits, Polarization B, without Connector Position Assurance, Gray

Documents:

3D Model	Product Specification PS-33472-000 (PDF)
Application Specification (PDF)	RoHS Certificate of Compliance (PDF)
Drawing (PDF)	



General

Product Family	Crimp Housings
Series	33482
Comments	No Connector Position Assurance (CPA)
More Detailed Tech Information	http://ewcap.uscarteams.org
Overview	mx150 sealed connector system
Product Name	MX150™

Physical

Circuits (maximum)	12
Circuits Detail	12
Color - Resin	Black, Gray (Light), Natural
Gender	Male
Glow-Wire Compliant	No
Keying to Mating Part	Yes
Lock to Mating Part	Yes
Material - Resin	Modified Polystyrene Alloy
Number of Rows	2
Packaging Type	Bag
Panel Mount	No
Pitch - Mating Interface (in)	0.138 In
Pitch - Mating Interface (mm)	3.50 mm
Polarized to Mating Part	Yes
Stackable	No
Temperature Range - Operating	-40°C to +125°C

Electrical

Current - Maximum per Contact	22A
-------------------------------	-----

Material Info

Reference - Drawing Numbers

Application Specification	AS-33472-100
Packaging Specification	PK-30907-811, PK-31300-635
Product Specification	PS-33472-000
Sales Drawing	SD-33482-121

EU RoHS ELV and RoHS Compliant REACH SVHC Contains SVHC: No Halogen-Free Status Not Reviewed	China RoHS 
---	--

Need more information on product environmental compliance?

Email productcompliance@molex.com
 For a multiple part number RoHS Certificate of Compliance, [click here](#)

Please visit the [Contact Us](#) section for any non-product compliance questions.

Search Parts in this Series

[33482Series](#)

Mates With

[33472](#) Female Dual Row Sealed Connector

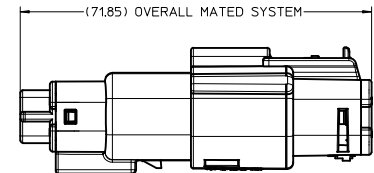
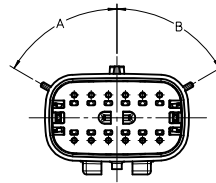
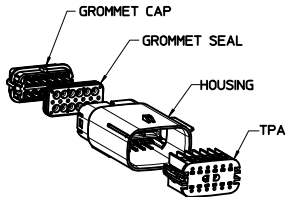
Use With

[33000](#) MX150™ Tin (Sn) Male Terminal,
[33011](#) Gold (Au) Male Terminal

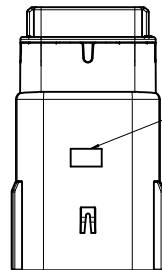
ASSEMBLY PART NUMBER	COLOR	KEYING OPTION	DIMENSIONS		CAVITY TYPE & STATUS (X = PLUGGED)																		
			A	B	1	2	3	4	5	6	7	8	9	10	11	12							
33482-1201	BLACK	A	60	60																			
33482-1202	LT.GRAY	B	25	60																			
33482-1203	BROWN	C	60	25																			
33482-1204	GREEN	D	25	25																			
33482-1205	CUSTOM	TBD																					
33482-1206	BLACK	A	60	60																		X	
33482-1207	LT.GRAY	B	25	60																		X	
33482-1208	BROWN	C	60	25																		X	
33482-1209	GREEN	D	25	25																		X	
33482-1210	CUSTOM	TBD																				X	
33482-1211	BLACK	A	60	60																		X	X
33482-1212	LT.GRAY	B	25	60																		X	X
33482-1213	BROWN	C	60	25																		X	X
33482-1214	GREEN	D	25	25																		X	X
33482-1215	CUSTOM	TBD																				X	X
33482-1216	BLACK	A	60	60	X																	X	X
33482-1217	LT.GRAY	B	25	60	X																	X	X
33482-1218	BROWN	C	60	25	X																	X	X
33482-1219	GREEN	D	25	25	X																	X	X
33482-1220	CUSTOM	TBD			X																	X	X
33482-1221	BLACK	A	60	60	X																	X	X
33482-1222	LT.GRAY	B	25	60	X																	X	X
33482-1223	BROWN	C	60	25	X																	X	X
33482-1224	GREEN	D	25	25	X																	X	X
33482-1225	CUSTOM	TBD			X																	X	X
33482-1226	BLACK	A	60	60																		X	X
33482-1227	BLACK	A	60	60	X	X	X	X	X	X	X	X	X	X	X	X	X	X	X	X	X	X	X
33482-1228	LT.GRAY	B	25	60	X	X	X	X	X	X	X	X	X	X	X	X	X	X	X	X	X	X	X
33482-1229	BROWN	C	60	25	X	X	X	X	X	X	X	X	X	X	X	X	X	X	X	X	X	X	X
33482-1230	GREEN	D	25	25	X	X	X	X	X	X	X	X	X	X	X	X	X	X	X	X	X	X	X
33482-1231	CUSTOM	TBD			X	X	X	X	X	X	X	X	X	X	X	X	X	X	X	X	X	X	X
33482-1232	BLACK	A	60	60																		X	X
33482-1233	BLACK	A	60	60	X	X																X	X
33482-1234	BLACK	A	60	60																		X	X
33482-1235	BLACK	A	60	60																		X	X
33482-1236	LT.GRAY	B	25	60	X																	X	X
33482-1237	BLACK	A	60	60																		X	X
33482-1238	LT.GRAY	B	25	60	X																	X	X
33482-1239	BLACK	A	60	60	X																	X	X
33482-1240	BLACK	A	60	60																		X	X
33482-1241	BLACK	A	60	60																		X	X
33482-1242	BLACK	A	60	60																		X	X
33482-1243	BLACK	A	60	60	X																	X	X
33482-1244	BLACK	A	60	60	X																	X	X
33482-1245	BLACK	A	60	60																		X	X
33482-1246	BLACK	A	60	60																		X	X
33482-1247	BLACK	A	60	60																		X	X
33482-1248	BLACK	A	60	60	X																	X	X
33482-1249	BLACK	A	60	60																		X	X
33482-1250	BLACK	A	60	60																		X	X
33482-1251	BLACK	A	60	60																		X	X
33482-1252	BLACK	A	60	60																		X	X

NOTES: UNLESS OTHERWISE SPECIFIED

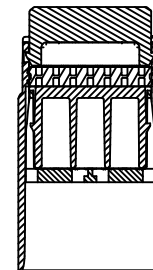
- DESIGNED TO MATE WITH RECEPTACLE HOUSING ASSEMBLY SPECIFIED IN MOLEX CHARTED DRAWING SD-33472-121.
- ASSEMBLY SHIPPED WITH BLADE INSERT IN PRE-LOCK POSITION SEE SECTION C-C. PRE-LOCK. UPON FULL TERMINAL ASSEMBLY, EACH BLADE INSERT MUST BE SNAPPED INTO ITS FINAL-LOCK POSITION.
- FOR BLADE TERMINALS TO BE USED WITH THIS ASSEMBLY, SEE DRAWING SD-33000-001.
- SYSTEM TO BE USED WITH WIRE WITHIN DIAMETER RANGE OF 1.5mm TO 2.5mm.
- MATERIAL: SPS/NYLON BLEND, 20% GLASS FILLED.
- SHALL CONFORM TO PACKAGING SPECIFICATION PK-30907-811.
- SHALL CONFORM TO PRODUCT SPECIFICATION PS-33472-000.
- ASSEMBLY CONFORMS TO SAE/USCAR-2 REV 4 WITH THE FOLLOWING EXCEPTIONS:
 - TERMINAL INSERTION FORCE FOR WIRE SIZE ABOVE 2.5mm NOT EXCEEDING 2.69mm SHALL NOT EXCEED 45 NEWTONS.



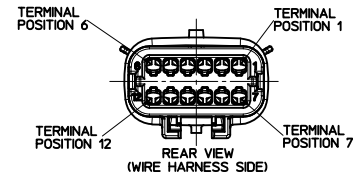
SCALE 1:1



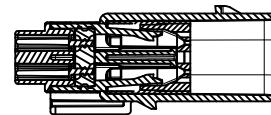
OPTIONAL TRACEABILITY INFORMATION LOCATED IN THIS AREA



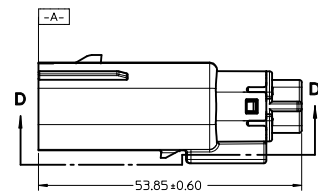
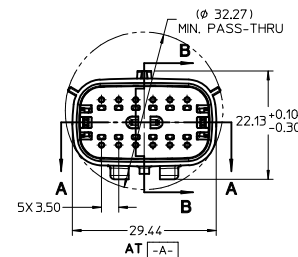
SECTION A-A



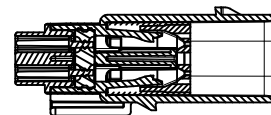
REAR VIEW (WIRE HARNESS SIDE)



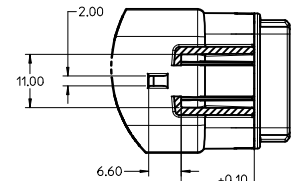
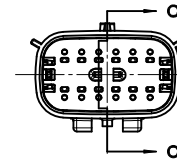
SECTION B-B (BLADE SHOWN IN FULL-LOCK POSITION) SEE NOTE 2



SECTION D-D



SECTION C-C (BLADE SHOWN IN PRE-LOCK POSITION) SEE NOTE 2



ENTER DESCRIPTION IEC NO: UAU2010-1289 DRAWN: H01 2010/01/13 CHK'D: DRJFF/THS 2010/01/14 APPR: W/OSHY 2010/01/18	QUALITY SYMBOLS ∇=0 ∇=0 ∇=0	GENERAL TOLERANCES (UNLESS SPECIFIED):		DIMENSION STYLE MM ONLY		SCALE 2:1	DESIGN UNITS METRIC	THIRD ANGLE PROJECTION	
		4 PLACES ± --- + --- 3 PLACES ± --- + --- 2 PLACES ± 0.10 + --- 1 PLACE ± 0.3 + ---	mm INCH	DRAWN BY DRJFF/THS	DATE 05-16-03	TITLE MX150 BLADE CONNECTOR ASSEMBLY 2 ROW SEALED 12 WAY			
		ANGULAR ± 3 °	DRAFT WHERE APPLICABLE MUST REMAIN WITHIN DIMENSIONS	APPROVED BY DRJFF/THS	DATE 05-16-03	MOLEX INCORPORATED MATERIAL NO. SD-33482-121 DOCUMENT NO.			
		SEE TABLE	THIS DRAWING CONTAINS INFORMATION THAT IS PROPRIETARY TO MOLEX INCORPORATED AND SHOULD NOT BE USED WITHOUT WRITTEN PERMISSION	SHEET NO. 1 OF 2					

20 19 18 17 16 15 14 13 12 11 10 9 8 7 6 5 4 3 2 1

ASSEMBLY PART NUMBER	COLOR	KEYING OPTION	DIMENSIONS		CAVITY TYPE & STATUS (X = PLUGGED)												
			A	B	1	2	3	4	5	6	7	8	9	10	11	12	
33482-1253	BLACK	A	60	60		X	X	X	X	X	X	X			X	X	X
33482-1254	BLACK	A	60	60		X	X	X	X						X	X	X
33482-1255	BLACK	A	60	60		X	X	X	X	X	X				X	X	X
33482-1256	BLACK	A	60	60	X					X	X		X				

ENTER DESCRIPTION IEC NO. UAU2010-1289 DRAWN BY W CHYKDRFFIHS 2010/01/14 APPR:VKOSHY 2010/01/18	QUALITY SYMBOLS	GENERAL TOLERANCES (UNLESS SPECIFIED)	DIMENSION STYLE	SCALE	DESIGN UNITS	THIRD ANGLE PROJECTION	
	▽=0	mm INCH	MM ONLY	2:1	METRIC		
	▽=0	4 PLACES ± --- ± --- 3 PLACES ± --- ± --- 2 PLACES ± 0.10 ± --- 1 PLACE ± 0.3 ± ---	DRAWN BY DATE DGRIFFIHS 05-16-03 CHECKED BY DATE DGRIFFIHS 05-16-03 APPROVED BY DATE DGRIFFIHS 05-16-03	TITLE MX150 BLADE CONNECTOR ASSEMBLY 2 ROW SEALED 12 WAY			
	▽=0	ANGULAR ± 3 °	MATERIAL NO. SEE TABLE	DOCUMENT NO. SD-33482-121			
DRAFT WHERE APPLICABLE MUST REMAIN WITHIN DIMENSIONS		THIS DRAWING CONTAINS INFORMATION THAT IS PROPRIETARY TO MOLEX INCORPORATED AND SHOULD NOT BE USED WITHOUT WRITTEN PERMISSION					

19 18 17 16 15 14 13 12 11 10 9 8 7 6 5 4 3 2 1