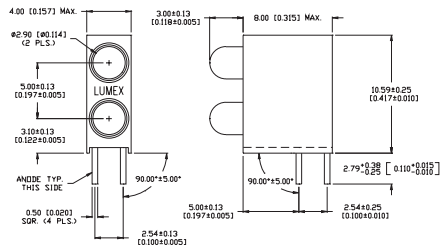




SSF-LXH241 Series T-3mm Dual Tower with Stand-off, Bottom LED Center 0.125" from PCB



FEATURES / OPTIONS

- ▶ State-of-the-Art, Chip Technology
- ▶ Easy Drop-In Board Installation
- ▶ Right Angle to the Board Position
- ▶ Choice of Colors and Lens Finishes
- ▶ Low Current Versions Available
- ▶ Color or Intensity Sorting Available
- ▶ Blinking LED
- ▶ With Internal Resistor for 5V and 12V Operation
- ▶ Black or Gray Holders for High Contrast
- ▶ Color Combinations

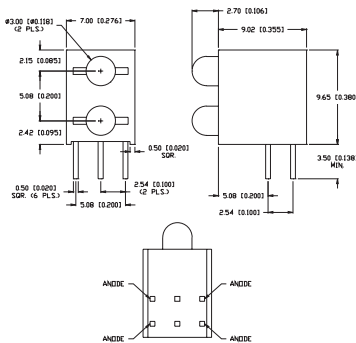
APPLICATIONS / USES

- ▶ Board Level Status Indicators
- ▶ Board Level Fault Indicators
- ▶ Circuit Troubleshooting Indicators
- ▶ Warning/Alarm Lights
- ▶ Backlighting of Overlays
- ▶ Post Lighting Switches and Keypads

| Lumex Part Number | Die Material | Emitted Color | Peak (nm) | Lens | Operating Current (mA) | Operating TYP. Vf (V) | Brightness TYP. Mcd | @ mA | View Angle° 2θ | Component LED Used |
|------------------------|--------------|--------------------------|-----------|-----------------|------------------------|-----------------------|---------------------|------|----------------|--------------------|
| HIGH BRIGHTNESS | | | | | | | | | | |
| SSF-LXH241SISID | AlInGaP | Super High Intensity Red | 636 | Red Diffused | 5-25 | 2 | 100 | 20 | 60 | SSL-LX3044SID |
| SSF-LXH241SOSOD | AlInGaP | Super Orange | 610 | Orange Diffused | 5-25 | 2 | 100 | 20 | 60 | SSL-LX3044SOD |
| SSF-LXH241SUGSUGD | AlInGaP | Super Ultra Green | 574 | Green Diffused | 5-25 | 2.2 | 60 | 20 | 60 | SSL-LX3044SUGD |
| SSF-LXH241SYSYD | AlInGaP | Super Yellow | 590 | Yellow Diffused | 5-25 | 2 | 100 | 20 | 60 | SSL-LX3044SYD |
| SSF-LXH241USBUSBD | InGaN/SiC | Ultra Super Blue | 470 | Blue Diffused | 5-25 | 3.5 | 200 | 20 | 60 | SSL-LX3044USBD |

SSF-LXH2109 Series

T-3mm 3-Leaded, Dual Tower, Bi-Color



FEATURES / OPTIONS

- ▶ State-of-the-Art, Chip Technology
- ▶ Easy Drop-In Board Installation
- ▶ Right Angle to the Board Position
- ▶ Choice of Colors and Lens Finishes
- ▶ Low Current Versions Available
- ▶ Color or Intensity Sorting Available
- ▶ Blinking LED
- ▶ With Internal Resistor for 5V and 12V Operation
- ▶ Black or Gray Holders for High Contrast
- ▶ Color Combinations
- ▶ Common Anode Version

APPLICATIONS / USES

- ▶ Board Level Status Indicators
- ▶ Board Level Fault Indicators
- ▶ Circuit Troubleshooting Indicators
- ▶ Warning/Alarm Lights
- ▶ Backlighting of Overlays
- ▶ Post Lighting Switches and Keypads

| Lumex Part Number | Die Material | Emitted Color | Peak (nm) | Lens | Operating Current (mA) | Operating TYP. Vf (V) | Brightness TYP. Mcd | @ mA | View Angle° 2θ | Component LED Used |
|-------------------|--------------|--------------------------|-----------|-------------|------------------------|-----------------------|---------------------|------|----------------|--------------------|
| SSF-LXH2109SISUGW | AlInGaP | Super High Intensity Red | 636 | Milky White | 5-25 | 2 | 350 | 20 | 60 | SSL-LX3059SISUGW |
| | AlInGaP | Super Ultra Green | 574 | Diffused | 5-25 | 2.2 | 130 | 20 | | |
| SSF-LXH2109SISYW | AlInGaP | Super High Intensity Red | 636 | Milky White | 5-25 | 2 | 250 | 20 | 60 | SSL-LX3059SISYW |
| | AlInGaP | Super Yellow | 590 | Diffused | 5-25 | 2 | 250 | 20 | | |
| SSF-LXH2109SYSUGW | AlInGaP | Super Yellow | 590 | Milky White | 5-25 | 2 | 250 | 20 | 60 | SSL-LX3059SYSUGW |
| | AlInGaP | Super Ultra Green | 574 | Diffused | 5-25 | 2.2 | 80 | 20 | | |



USA/Canada +1-800-278-5666
Europe +49-6081-964380
Asia +886-3-5821124



www.lumex.com



USA/Canada +1-847-359-8904
Europe +49-6081-964381
Asia +886-3-5821154