

## SPECIFICATIONS

### Mechanical

**Retention Force:** 0.454 kgf min.  
**Mating Force:** 100G max per contact pair.  
**Unmating Force:** 15G min per contact pair.  
**Durability:** 500 Cycles.

### Electrical

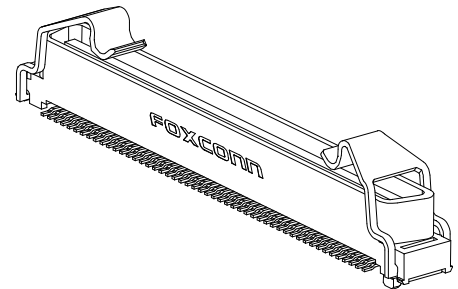
**Voltage Rating:** 250V.  
**Current Rating:** 3.0A per pin max.  
**Contact Resistance:** 30mW max.  
**Dielectric Withstanding Voltage:** 500V AC.  
**Insulation Resistance:** 1000MW min.

### Physical

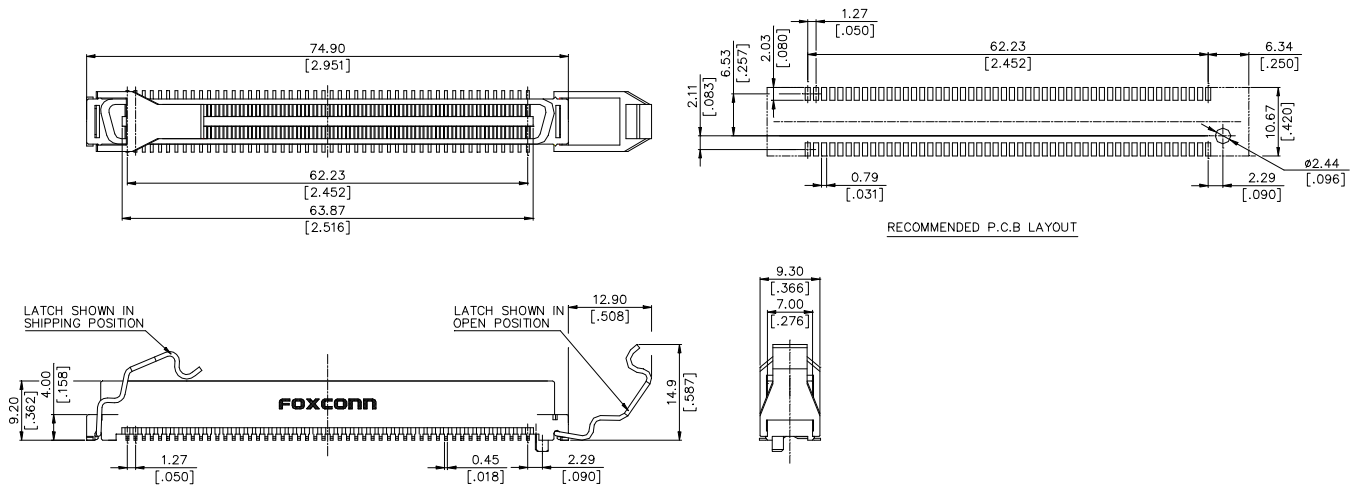
**Housing:** Thermoplastic, UL 94V-0 rated in Black Color  
**Contact:** Copper alloy  
**Plating:** See "ORDERING INFORMATION"  
**Operating Temperature:** -55 to +105

## FBBI Connector

**LZ Series**  
**Vertical Type, SMT**  
**Plug**  
**1.27mm [.050"] Pitch**  
**100 Pos.**



## DRAWING



## ORDERING INFORMATION

PRODUCT NO.: L Z 12 50 \* - L12 P

FBBI \_\_\_\_\_  
 Plug \_\_\_\_\_  
 Moutig End Type \_\_\_\_\_  
 2=Vertical \_\_\_\_\_  
 No. Of Pos \_\_\_\_\_  
 50=100 Pos \_\_\_\_\_  
 Contact Area Plating \_\_\_\_\_  
 3 = 30μ" Gold \_\_\_\_\_  
 H = 30μ" Gold with RoHS Compliance \_\_\_\_\_

Housing Material  
 P=PA6T  
 None=LCP

L12= With Latch