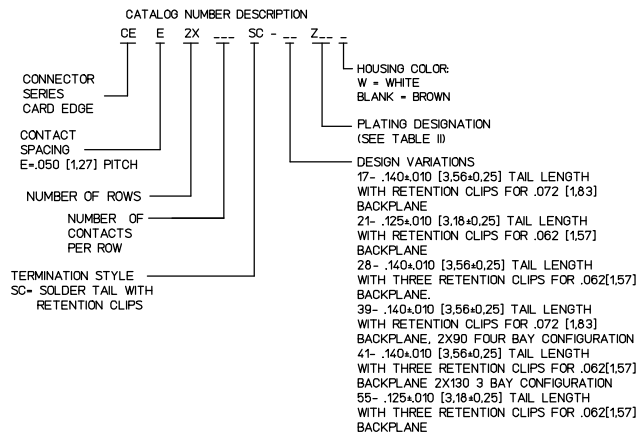


CATALOG NO	CONTACTS PER ROW	TOTAL NO CONTACTS	NO. OF CONTACT PAIRS		D	E	G ±.008 [0,20]
			BAY A	BAY B			
CEE2X23SC-17Z...	23	46	11	12	.590 [14,99]	.640 [16,26]	1.490 [37,85]
CEE2X40SC-17Z...	40	80	11	29	.590 [14,99]	1.490 [37,85]	2.340 [59,44]
CEE2X45SC-17Z...	45	90	11	34	.590 [14,99]	1.740 [44,20]	2.590 [65,79]
CEE2X56SC-17Z...	56	112	11	45	.590 [14,99]	2.290 [58,17]	3.140 [79,76]
CEE2X60SC-17Z...	60	120	11	49	.590 [14,99]	2.490 [63,25]	3.340 [84,84]
CEE2X91SC-21Z...	91	182	42	49	2.140 [54,36]	2.490 [63,25]	4.890 [124,21]

PLATING DESIGNATION	DESCRIPTION
Z14	GOLD FLASH OVER 40 MICRONS [1,02 MICRONS] PALLADIUM-NICKEL OVER 50 MICRONS [1,27 MICRONS] MIN NICKEL UNDERPLATE IN CRITICAL CONTACT AREA AND 100 MICRONS [2,54 MICRONS] SOLDER OVER NICKEL UNDERPLATE ON SOLDER TAILS.
Z22	30 MICRONS [0,76 MICRONS] MIN GOLD OVER 50 MICRONS [1,27 MICRONS] MIN NICKEL UNDERPLATE IN CRITICAL CONTACT AREA AND 100 MICRONS [2,54 MICRONS] SOLDER OVER NICKEL UNDERPLATE ON SOLDER TAILS.
Z51	GOLD FLASH OVER 15 MICRONS [0,38 MICRONS] PALLADIUM-NICKEL OVER 50 MICRONS [1,27 MICRONS] MIN NICKEL UNDERPLATE IN CRITICAL CONTACT AREA AND 100 MICRONS [2,54 MICRONS] SOLDER OVER NICKEL UNDERPLATE ON SOLDER TAILS.

DESIGN VARIATION	SOLDER TAIL LENGTH ±.010 [0,25]	RETENTION CLIP LENGTH ±.010 [0,25]	APPLICABLE BACKPLANE BOARD THICKNESS ±.008 [0,20]
17	.140 [3,56]	.162 [4,11]	.072 [1,83]
21	.125 [3,18]	.155 [3,94]	.062 [1,57]
28	.140 [3,56]	.155 [3,94]	.062 [1,57]
39	.140 [3,56]	.162 [4,11]	.072 [1,83]
41	.140 [3,56]	.155 [3,94]	.062 [1,57]
55	.125 [3,18]	.155 [3,94]	.062 [1,57]



- NOTES: UNLESS OTHERWISE SPECIFIED,
- INTERPRET THIS DRAWING IN ACCORDANCE WITH ANSI Y14.5M - 1982.
  - SEE SHEETS 3, 4, 5, 6 AND 7 FOR RECOMMENDED MATING P.C. BOARD CONTACT PAD AND BACKPLANE LAYOUTS.

- MATING P.C. BOARD MATERIAL:  
P.C. BOARD: FR-4 WITH 1 OZ. [28,35 GRAMS] MIN COPPER PADS
- PAD PLATING: 30 MICRONS [0,76 MICRONS] MIN GOLD PER MIL-G-45204 TYPE 1 CLASS 1 GRADE C. OVER 100 MICRONS [2,54 MICRONS] MIN NICKEL PER QQ-N-290
- V-GROOVE STABILIZER CARD SLOT.

MATERIALS:  
BODY - GLASS FILLED THERMOPLASTIC, RATED UL94V-0  
COLOR - NATURAL (BROWN)

CONTACTS - COPPER ALLOY

FINISH:  
PLATING - SEE TABLE II

PERFORMANCE CHARACTERISTICS:

CONTACT RESISTANCE - MIL-STD-1344, METHOD 3002. 30 MILLIOHMS MAX. (LOW SIGNAL LEVEL) OR EXCEEDING LOW LEVEL CONTACT RESISTANCE INITIAL, 10 MILLIOHMS MAX INCREASE THROUGH TESTING.

CURRENT RATING - 1 AMP. PER EACH POWER CONTACT.

CONTACT NORMAL FORCE - 1.76 OZ FORCE [0,49 N] MINIMUM END OF LIFE.

DURABILITY - 100 MATING CYCLES WITHOUT PHYSICAL DAMAGE; OR EXCEEDING LOW LEVEL CONTACT RESISTANCE REQUIREMENT WHEN MATED WITH RECOMMENDED CARD EDGE.

INSULATION RESISTANCE - MIL-STD-202, METHOD 302, CONDITION B, 1000 MEGAOHMS MINIMUM.

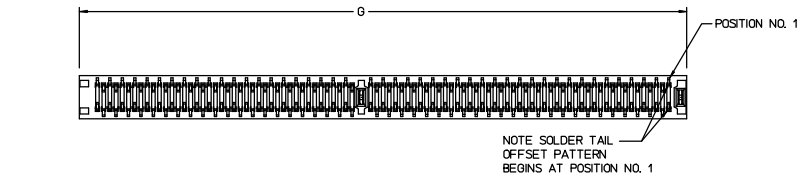
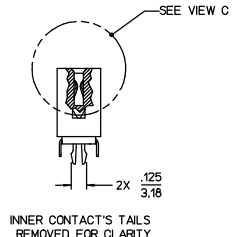
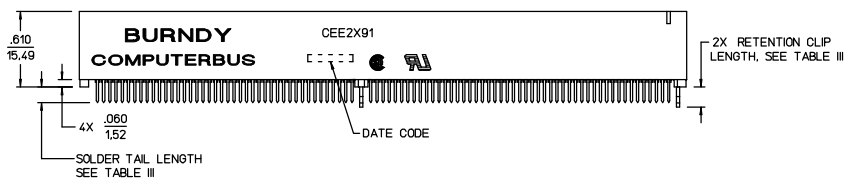
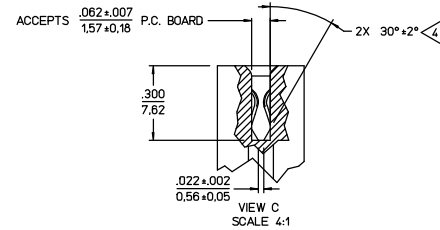
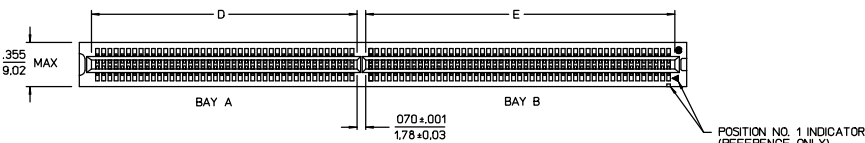
OPERATING TEMPERATURE -40°F TO 221°F [-40°C TO 105°C]

THERMAL SHOCK - MIL-STD-1344, METHOD 1003, -67°F TO 185°F [-55°C TO 85°C], 5 CYCLES.

CAPACITANCE - 2 PICOFARADS, MAX @ 1 MEGAHERTZ

COMPATIBLE WITH WAVE SOLDERING AND VAPOR-PHASE SOLDERING TECHNIQUES.

MATING FORCE - MIL-STD-1344, METHOD 2013, 6 OZ.-FORCE [1,7 N] MAX. AVERAGE PER OPPOSING PAIR USING GAUGE PER MIL-STD-G-21097 EXCEPT .062 [1,57] THICK WITH 20° LEAD-IN ANGLE



CEE2X91SC-21Z... SHOWN

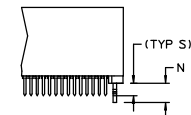
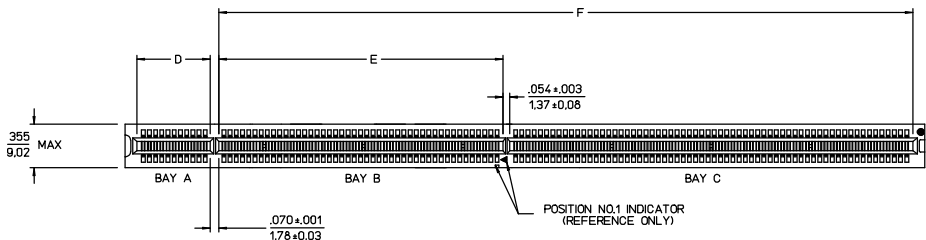
REV	REVISION DESCRIPTION	BY	CHKD	DATE
	COMPUTERBUS CARD EDGE CONNECTOR (CLIP VERSION)			
CAT NO. CEE2X...SC...Z... (SEE TABLE)				
DWG RELEASED TO CENTRAL FILE 03-19-98				
CAGE NO 09922   DON XXX   PC 822				
FRAMATOME CONNECTORS USA INC.				
DRAWING SCALE 2 : 1				
DRAWING NO. SE96859				
REV 0				
SHEET 1 OF 6				

LINEAR MEASURE:	INCH	INCH (mm)
THIRD ANGLE PROJECTION		
- TOLERANCES -		
UNLESS OTHERWISE SPECIFIED		
NO. OF DECIMAL PLACES IN INCHES	INCH (mm)	
ONE PLACE	±.1 (.3)	
TWO PLACES	±.02 (.05)	
THREE PLACES	±.005 (.013)	
ANGLES ±°		

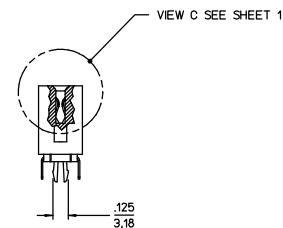
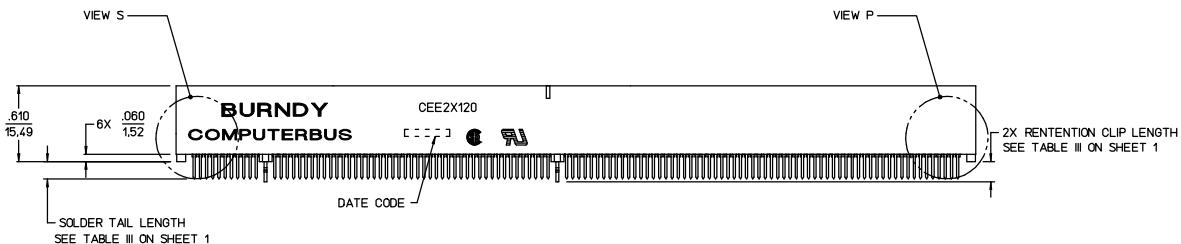


CATALOG NO.	CONTACTS PER ROW	TOTAL NO CONTACTS	NUMBER OF CONTACT PAIRS			DIMENSIONS			
			BAY A	BAY B	BAY C	D	E	F	G ±.008[0,20]
CEE2X66SC-17Z...	66	132	11	45	10	.590[14,99]	2.288[58,12]	2.890[73,41]	3.740[95,00]
CEE2X70SC-V17Z...	70	140	11	45	14	.590[14,99]	2.288[58,12]	3.090[78,47]	3.940[100,08]
CEE2X97SC-V17Z...	97	194	42	45	10	2.140[54,36]	2.288[58,12]	2.890[73,41]	5.290[134,37]
CEE2X106SC-V28Z...	106	212	40	40	26	2.040[51,82]	2.038[51,77]	3.440[87,38]	5.740[145,80]
CEE2X120SC-17Z...	120	240	11	45	64	.590[14,99]	2.288[58,12]	5.590[141,99]	6.440[163,58]
CEE2X130SC-V41Z...	130	260	42	45	43	2.140[54,36]	2.288[58,12]	4.540[115,32]	6.940[176,28]

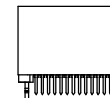
NOTES: SEE SHEET 1



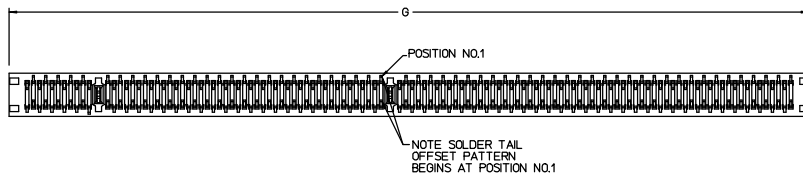
VIEW P  
ADDITIONAL CLIP REQUIREMENT  
FOR CEE2X106SC-V28Z...



INNER CONTACTS' TAILS  
REMOVED FOR CLARITY



VIEW S  
ADDITIONAL CLIP REQUIREMENT  
FOR CEE2X130SC-V41Z... ONLY



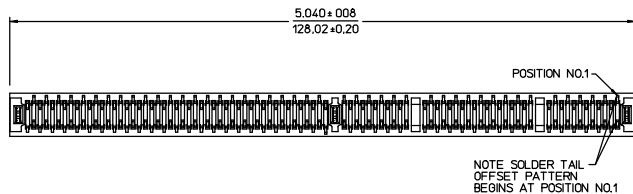
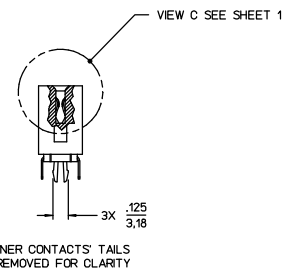
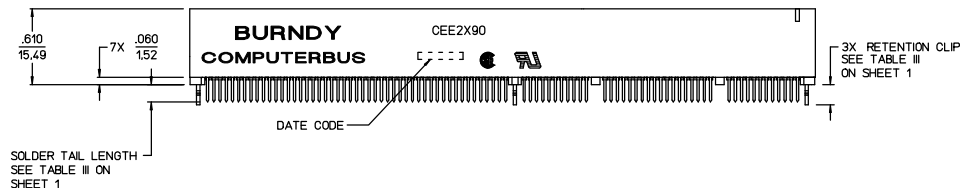
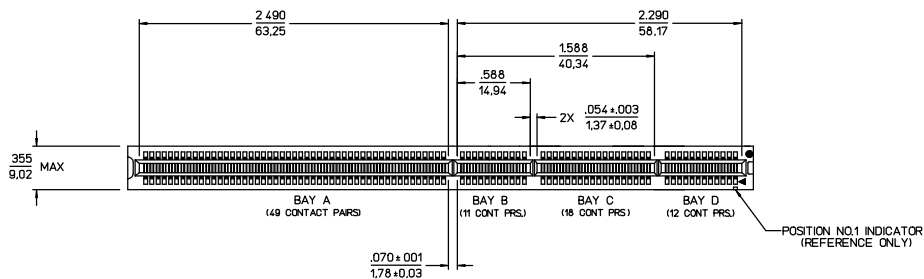
CEE2X120SC-17Z... SHOWN

REV	REVISION DESCRIPTION	BY	CHKD	DATE
	COMPUTERBUS CARD EDGE CONNECTOR (CLIP VERSION)			
	CAT NO. CEE2X...SC-...Z... (SEE TABLE)			

LINEAR MEASURE:	INCH	INCH (mm)
THIRD ANGLE PROJECTION		
- TOLERANCES -		
UNLESS OTHERWISE SPECIFIED		
NO. OF DECIMAL PLACES IN INCHES	INCH (mm)	
ONE PLACE	±.1 (.3)	
TWO PLACES	±.02 (.05)	
THREE PLACES	±.005 (.013)	
ANGLES ±°		

DWG RELEASED TO CENTRAL FILE 03-19-98		A	DRWN	DAF	03-19-98
CAGE NO 09922   DGN XXX   PC 822		P	CHKD	CHK	03-19-98
FRAMATOME CONNECTORS USA INC.		R	DSGN	CHK	03-19-98
		L	MKT	XXX XX-XX-XX	
		L	QC	XXX XX-XX-XX	
		L	DRWING	SCALE 2 : 1	
		L	DRAWING NO.	REV	
		L	SE96859	0	
		L	SHEET 2 OF 8		

NOTES: SEE SHEET 1



CEE2X90SC-V39Z... SHOWN

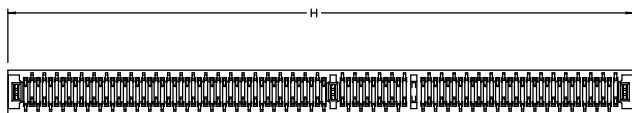
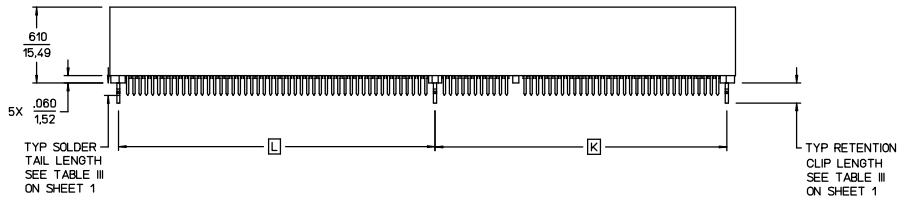
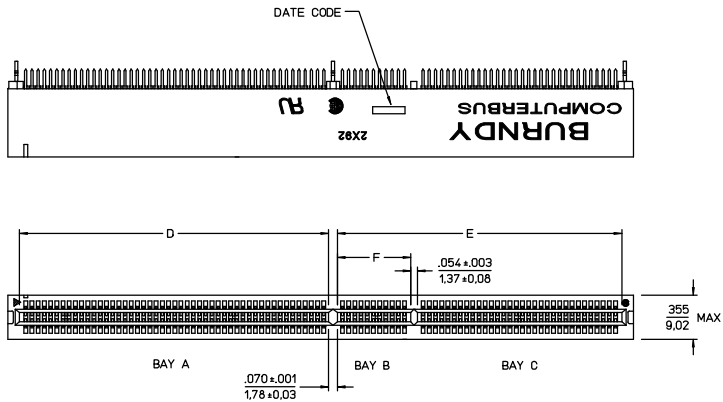
REV	REVISION DESCRIPTION	BY	CHKD	DATE			
COMPUTERBUS CARD EDGE CONNECTOR (CLIP VERSION)							
CAT NO. CEE2X...SC-...Z... (SEE TABLE)							
FRAMATOME CONNECTORS USA INC.							
DWG RELEASED TO CENTRAL FILE 03-19-98				A	DRWN	DAF	03-19-98
CAGE NO 09922   DGN XXX   PC 822				P	CHKD	CHK	03-19-98
				R	DSGN	CHK	03-19-98
				V	MKT	XXX XX-XX-XX	
				L	QC	XXX XX-XX-XX	
				DRAWING SCALE 2 : 1			
				DRAWING NO.		REV	
				SE96859		0	
				SHEET 3 OF 8			



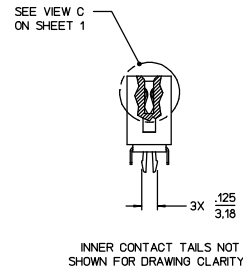
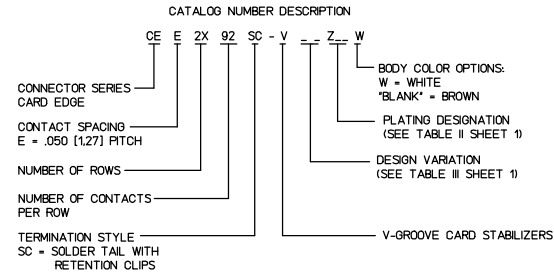
LINEAR MEASURE:	INCH	INCH (mm)
THIRD ANGLE PROJECTION		
- TOLERANCES -		
UNLESS OTHERWISE SPECIFIED		
NO. OF DECIMAL PLACES IN INCHES	INCH (mm)	
ONE PLACE	±.1 (.3)	
TWO PLACES	±.02 (.05)	
THREE PLACES	±.005 (.013)	
ANGLES ±°		

TABLE OF DIMENSIONS											
CATALOG NO.	CONTACTS PER ROW	TOTAL NO CONTACTS	NO. OF CONTACT PAIRS			D	E	F	H ±.008 [0,20]	K	L
			BAY A	BAY B	BAY C						
CEE2X92SC-V55Z_W	92	184	49	11	32	2.490 [63,25]	2.290 [58,17]	.590 [14,99]	5.040 [128,02]	2.350 [59,69]	2.550 [64,77]

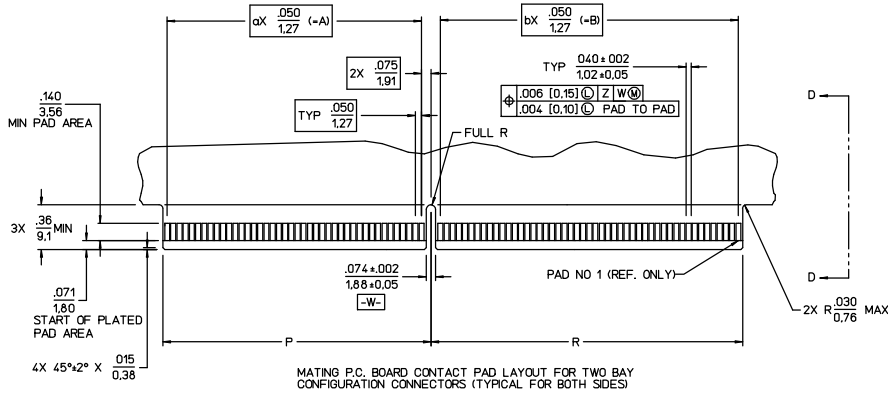
NOTES: SEE SHEET 1.



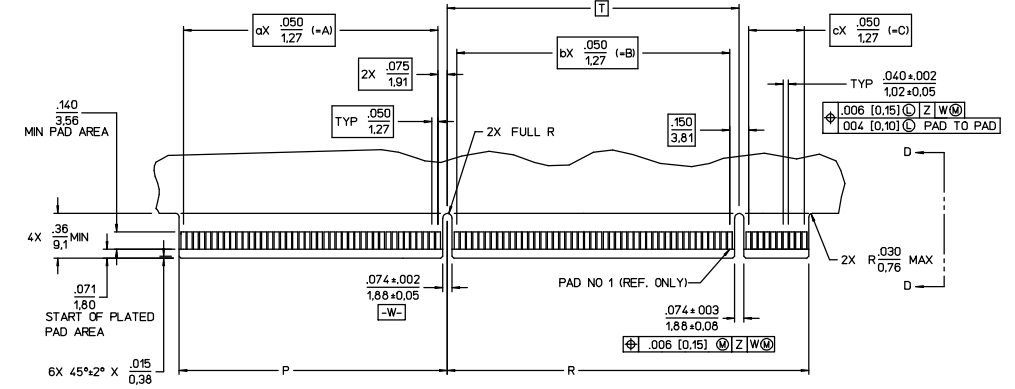
CEE2X92SC-V55Z\_W CONNECTOR SHOWN



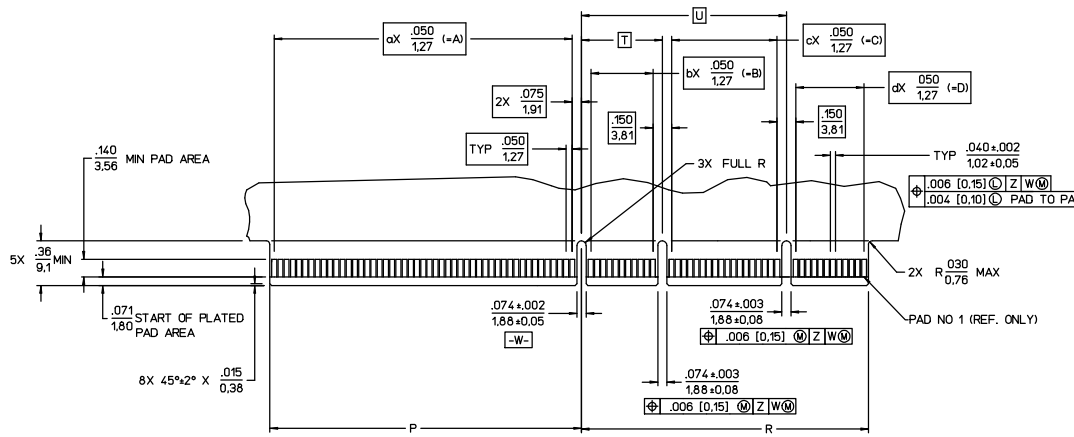
REV	REVISION DESCRIPTION	BY	CHKD	DATE
COMPUTERBUS CARD EDGE CONNECTOR (CLIP VERSION)				
CAT NO. CEE2X_ _SC- _Z_ _ (SEE TABLE)				
DWG RELEASED TO CENTRAL FILE 03-19-98				
CAGE NO 09922   DQN XXX   PC 822				
FRAMATOME CONNECTORS USA INC.				
LINEAR MEASURE: INCH (mm) INCH (mm) THIRD ANGLE PROJECTION 		DRWN DAF 03-19-98 CHKD CWK 03-19-98 DSGN CWK 03-19-98 MKT XXX XX-XX-XX QC XXX XX-XX-XX		
- TOLERANCES -				
UNLESS OTHERWISE SPECIFIED				
NO. OF DECIMAL PLACES IN INCHES		INCH (mm)		
ONE PLACE		±.1 (.3)		
TWO PLACES		±.02 (.05)		
THREE PLACES		±.005 (.013)		
ANGLES ±°				
DRAWING SCALE 2 : 1				REV
DRAWING NO. SE96859				0
SHEET 4 OF 8				



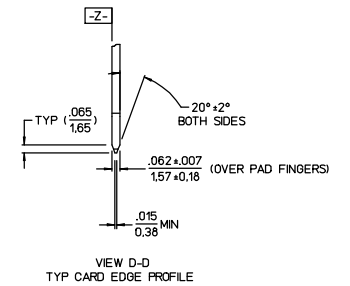
MATING P.C. BOARD CONTACT PAD LAYOUT FOR TWO BAY CONFIGURATION CONNECTORS (TYPICAL FOR BOTH SIDES)



MATING P.C. BOARD CONTACT PAD LAYOUT FOR THREE BAY CONFIGURATION CONNECTORS (TYPICAL FOR BOTH SIDES)



MATING P.C. BOARD CONTACT PAD LAYOUT FOR FOUR BAY CONFIGURATION CONNECTORS (TYPICAL FOR BOTH SIDES)



VIEW D-D  
TYP CARD EDGE PROFILE

TABLE IV EDGE CARD DIMENSIONS

CATALOG NO.	a NO OF SPACES	A	b NO OF SPACES	B	c NO OF SPACES	C	d NO OF SPACES	D	P	R	T	U
CEE2X23SC-17Z...	10	.500 [12.70]	11	.550 [13.97]					.610 [15.49]	.680 [16.76]		
CEE2X40SC-17Z...	10	.500 [12.70]	28	1.400 [35.56]					.610 [15.49]	1.510 [38.35]		
CEE2X45SC-17Z...	10	.500 [12.70]	33	1.650 [41.91]					.610 [15.49]	1.760 [44.70]		
CEE2X56SC-17Z...	10	.500 [12.70]	44	2.200 [55.88]					.610 [15.49]	2.310 [58.67]		
CEE2X60SC-V17Z...	10	.500 [12.70]	48	2.400 [60.96]					.610 [15.49]	2.510 [63.75]		
CEE2X66SC-17Z...	10	.500 [12.70]	44	2.200 [55.88]	9	.450 [11.43]			.610 [15.49]	2.910 [73.91]	2.350 [59.69]	
CEE2X70SC-V17Z...	10	.500 [12.70]	44	2.200 [55.88]	13	.650 [16.51]			.610 [15.49]	3.110 [78.99]	2.350 [59.69]	
CEE2X90SC-V39Z...	48	2.400 [60.96]	10	.500 [12.70]	17	.850 [21.59]	11	.550 [13.97]	2.510 [63.75]	2.310 [58.67]	.650 [16.51]	1.650 [41.91]
CEE2X91SC-21Z...	41	2.050 [52.07]	48	2.400 [60.96]					2.160 [54.86]	2.510 [63.75]		
CEE2X92SC-V55Z...W	48	2.400 [60.96]	10	.500 [12.70]	31	1.550 [39.37]			2.510 [63.75]	2.310 [58.67]	.650 [16.51]	
CEE2X97SC-V17Z...	41	2.050 [52.07]	44	2.200 [55.88]	9	.450 [11.43]			2.160 [54.86]	2.910 [73.91]	2.350 [59.69]	
CEE2X106SC-V28Z...	39	1.950 [49.53]	39	1.950 [49.53]	25	1.250 [31.75]			2.060 [52.32]	3.460 [87.88]	2.100 [53.34]	
CEE2X120SC-17Z...	10	.500 [12.70]	44	2.200 [55.88]	63	3.150 [80.01]			.610 [15.49]	5.610 [142.49]	2.350 [59.69]	
CEE2X130SC-41Z...	41	2.050 [52.07]	44	2.200 [55.88]	42	2.100 [53.34]			2.160 [54.86]	4.610 [117.09]	2.350 [59.69]	

LINEAR MEASURE: INCH (mm) INCH (mm)

THIRD ANGLE PROJECTION

TOLERANCES - UNLESS OTHERWISE SPECIFIED

NO OF DECIMAL PLACES IN INCHES INCH (mm)

ONE PLACE ±.1 (.3)

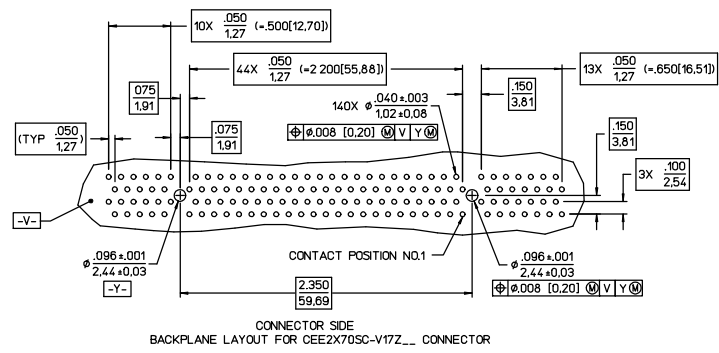
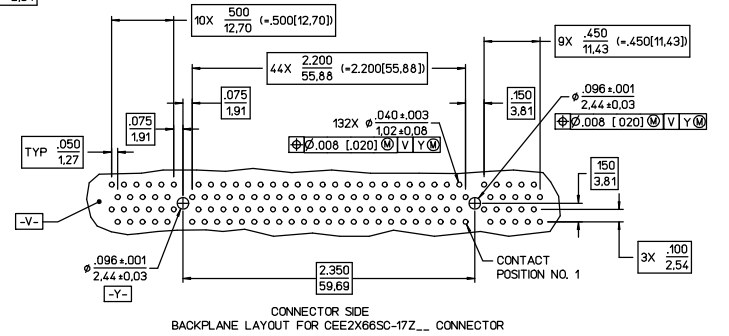
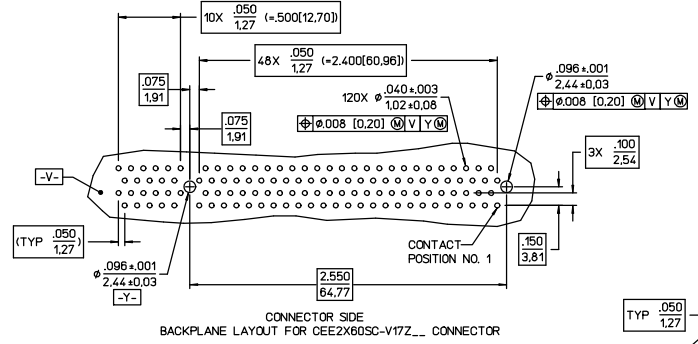
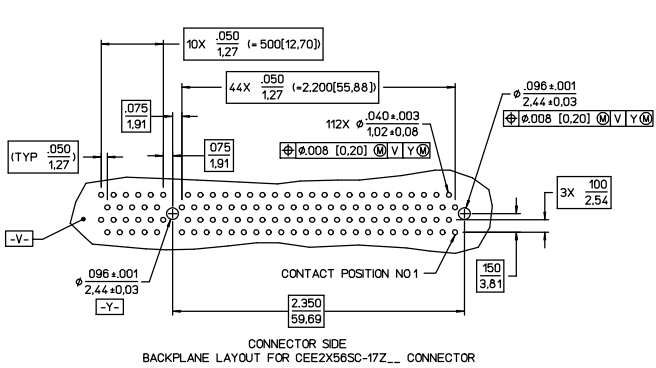
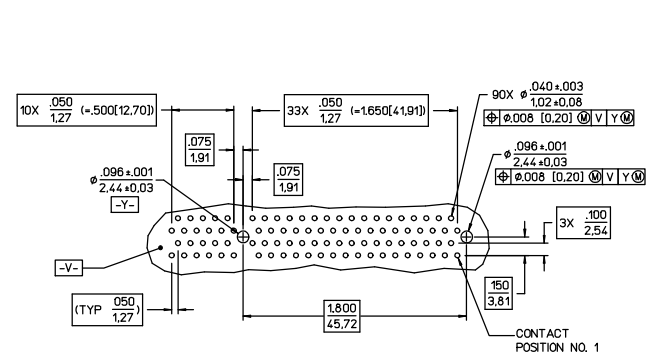
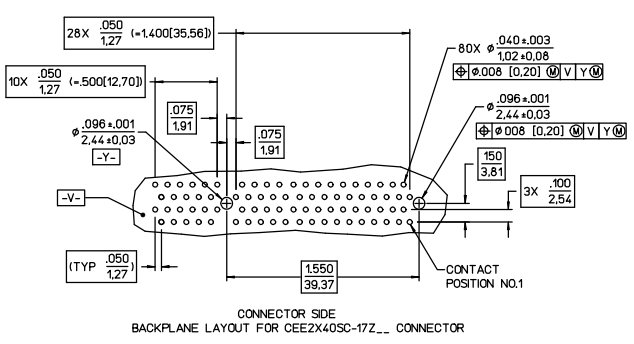
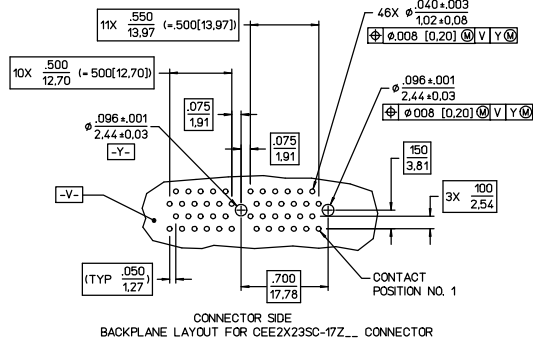
TWO PLACES ±.02 (.05)


THREE PLACES ±.005 (.013)

ANGLES ±1°

REV	REVISION DESCRIPTION	BY	CHKD	DATE
COMPUTERBUS CARD EDGE CONNECTOR (CLIP VERSION)				
CAT NO. CEE2X...SC-...Z... (SEE TABLE)				
DWG RELEASED TO CENTRAL FILE 03-19-98				
CAGE NO 09922   DON XXX   PC 822				
FRAMATOME CONNECTORS USA INC.				
DRAWING SCALE 2 : 1				
DRAWING NO. REV				
SE96859 0				
SHEET 5 OF 8				



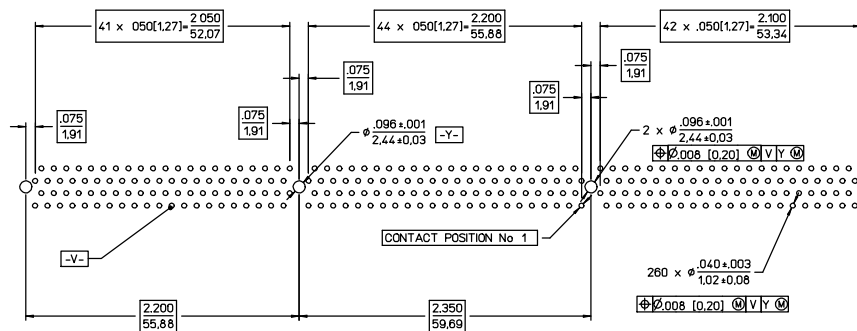


REV	REVISION DESCRIPTION	BY	CHKD	DATE
COMPUTERBUS CARD EDGE CONNECTOR (CLIP VERSION)				
CAT NO. CEE2X...SC-...Z... (SEE TABLE)				
DWG RELEASED TO CENTRAL FILE 03-19-98				
CAGE NO 09922 DGN XXX PC 822				
FRAMATOME CONNECTORS USA INC.				
				
DRAWING SCALE 2:1				REV
DRAWING NO. SE96859				0
SHEET 6 OF 8				

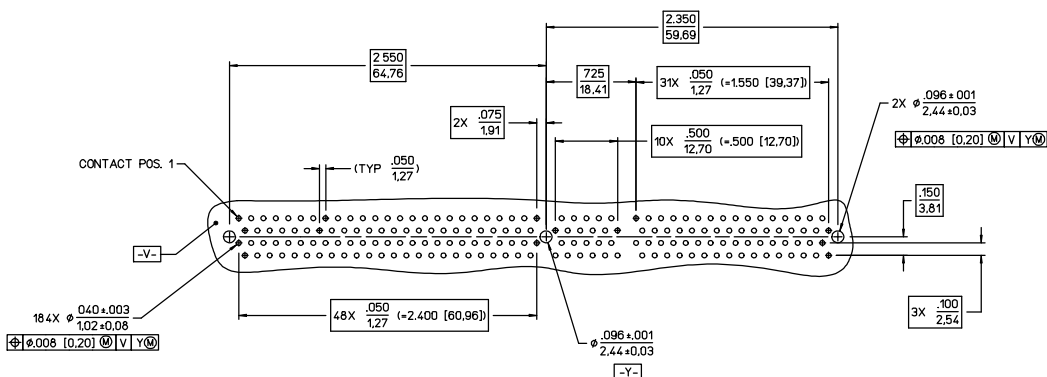
LINEAR MEASURE:	INCH	INCH (mm)
THIRD ANGLE PROJECTION		
- TOLERANCES -		
UNLESS OTHERWISE SPECIFIED		
NO OF DECIMAL PLACES IN INCHES	INCH (mm)	
ONE PLACE	±.1 (.3)	
TWO PLACES	±.02 (.05)	
THREE PLACES	±.005 (.013)	
ANGLES ±°		

DRWVN	DAF	03-19-98
CHKD	CHK	03-19-98
DSGN	CHK	03-19-98
MKT	XXX	XX-XX-XX
QC	XXX	XX-XX-XX





CONNECTOR SIDE  
BACKPLANE LAYOUT FOR CEE2X130SC-V41Z...



CONNECTOR SIDE  
BACKPLANE LAYOUT FOR CEE2X925C-V55Z...W

REV	REVISION DESCRIPTION	BY	CHKD	DATE
COMPUTERBUS CARD EDGE CONNECTOR (CLIP VERSION)				
CAT NO. CEE2X...SC-...Z... (SEE TABLE)				

LINEAR MEASURE:	INCH	INCH (mm)
THIRD ANGLE PROJECTION		
- TOLERANCES -		
UNLESS OTHERWISE SPECIFIED		
NO. OF DECIMAL PLACES IN INCHES	INCH (mm)	
ONE PLACE	±.1 (.3)	
TWO PLACES	±.02 (.05)	
THREE PLACES	±.005 (.013)	
ANGLES ±°		

DWG RELEASED TO CENTRAL FILE 03-19-98		A	DRWN	DAF	03-19-98
CAGE NO 09922   DGN XXX   PC 822		P	CHKD	CHK	03-19-98
FRAMATOME CONNECTORS USA INC.		R	DSGN	CHK	03-19-98
		V	MKT	XXX XX-XX-XX	
		L	QC	XXX XX-XX-XX	
			DRAWING SCALE 2 : 1		
			DRAWING NO.	REV	
			SE96859	0	
			SHEET 8 OF 8		

