



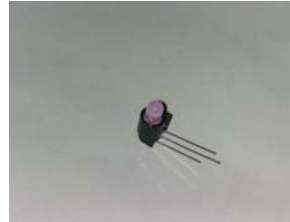
Technical Data Sheet

5.0mm Round Type LED Lamps

A1479-1B/UYUYW/S530-A3

■ Features :

- Low power consumption
- High efficiency and low cost
- Good control and free combinations on the colors of LED lamps
- Good lock and easy to assembly
- Stackable and easy to assembly
- Stackable vertically and easy to assembly
- Versatile mounting on P.C board or panel
- Stackable horizontally and easy to assembly
- Pb free



■ Descriptions :

- ARRAY=Plastic Holder+Combinations of Lamps
- The array will easily mount the applicable lamps on any panel up to

■ Applications :

- 1.Used as indicators of indicating the Degree, Functions, Positions etc, in electronic instruments.

PART NO.	Chip		Lens Color
	Material	Emitted Color	
339-1UYUYW/S530-A3	AlGaInP	Super Yellow	White Diffused

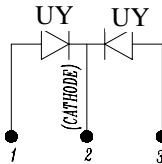
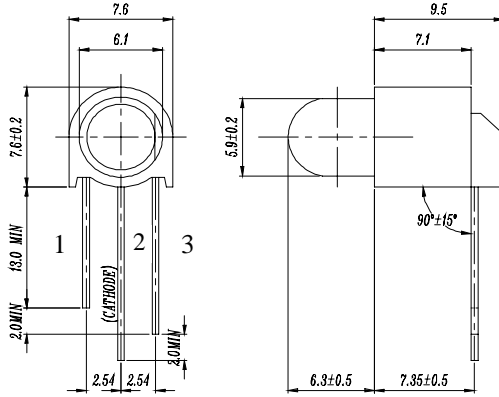


Technical Data Sheet

5.0mm Round Type LED Lamps

A1479-1B/UYUYW/S530-A3

Package Dimensions



- Notes:** 1. All dimensions are in millimeters, tolerance is 0.25mm except being specified
 2. Lead spacing is measured where the lead emerge from the package

Absolute Maximum Ratings at Ta = 25°C

Parameter	Symbol	Rating	Unit	
Forward Current	IF	SUR/S530	25	mA
		SUR/S530	25	
Operating Temperature	Topr	-40 to +85	°C	
Storage Temperature	Tstg	-40 to +100	°C	
Soldering Temperature	Tsol	260 ± 5	°C	
Electrostatic Discharge	ESD	SUR/S530	2000	V
		SUR/S530	2000	
Power Dissipation	Pd	SUR/S530	60	mW
		SUR/S530	60	
Peak Forward Current	IF(Peak)	SUR/S530	160	mA
		SUR/S530	160	
Reverse Voltage	VR	5	V	

Note: *1:IFP Conditions --Pulse Width ≤ 1msec and Duty ≤ 1/10.

*2:Soldering time ≤ 5 seconds.



Technical Data Sheet

5.0mm Round Type LED Lamps

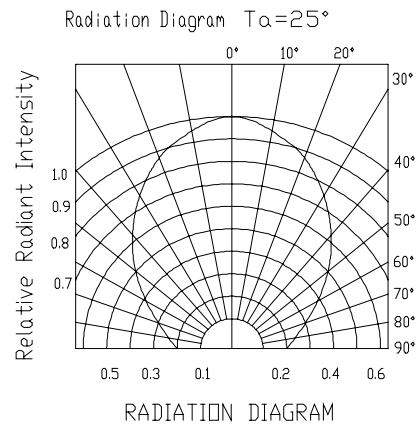
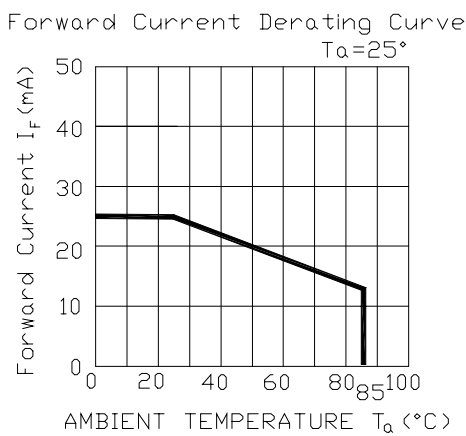
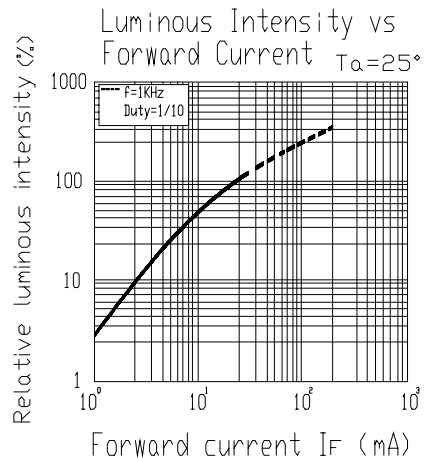
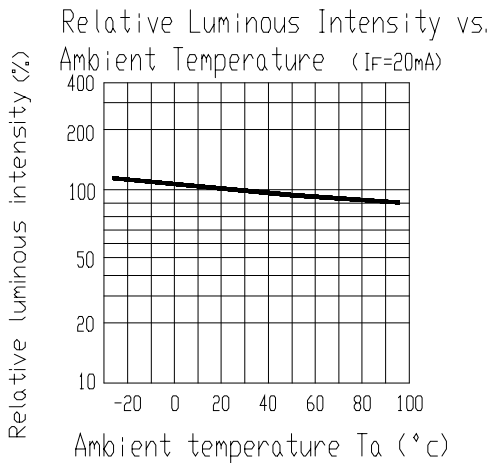
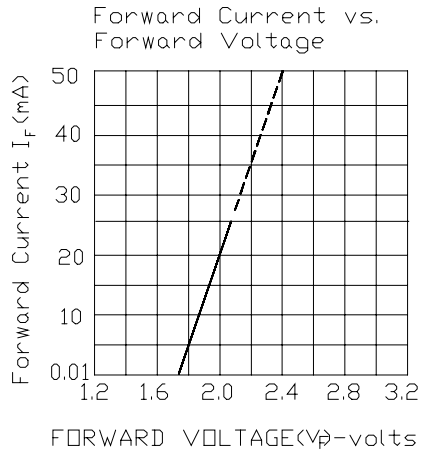
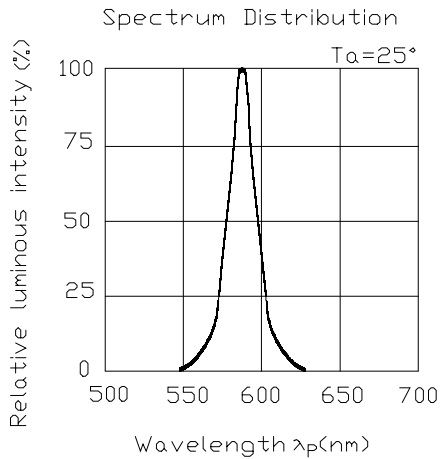
A1479-1B/UYUYW/S530-A3**Electro-Optical Characteristics (Ta=25°C)**

Parameter	Symbol	Min	Typ	Max	Unit	Condition
Luminous	I _v	UY/S530	25	50	/	mcd I _F = 20 mA
		UY/S530	25	50	/	
Viewing Angle	2θ _{1/2}	/	100	/	deg	I _F = 20 mA
Peak Wavelength	λ _p	UY/S530	/	591	/	nm I _F = 20 mA
		UY/S530	/	591	/	
Dominant Wavelength	λ _d	UY/S530	/	589	/	nm I _F = 20 mA
		UY/S530	/	589	/	
Spectrum Radiation Bandwidth	Δλ	UY/S530	/	15	/	nm I _F = 20 mA
		UY/S530	/	15	/	
Forward Voltage	V _F	UY/S530	/	2.0	2.4	V I _F = 20 mA
		UY/S530	/	2.0	2.4	
Reverse Current	I _R	/	/	10	μA	V _R = 5 V

Technical Data Sheet
5.0mm Round Type LED Lamps

A1479-1B/UYUYW/S530-A3

■ Typical Electro-Optical Characteristic Curves:





Technical Data Sheet
5.0mm Round Type LED Lamps

A1479-1B/UYUYW/S530-A3

■ Reliability test items and conditions:

NO	Item	Test Conditions	Test Hours/Cycle	Sample Size	Ac/Re
1	Solder Heat	TEMP : 260°C ± 5 °C	10 SEC	76 PCS	0/1
2	Temperature Cycle	H : +100°C 15min ∫ 5 min L : -40°C 15min	100 CYCLES	76 PCS	0/1
3	Thermal Shock	H : +100°C 5min ∫ 10 sec L : -10°C 5min	100 CYCLES	76 PCS	0/1
4	High Temperature Storage	TEMP : 100°C	1000 HRS	76 PCS	0/1
5	Low Temperature Storage	TEMP : -40°C	1000 HRS	76 PCS	0/1
6	DC Operating Life	TEMP : 25°C IF = 20mA	1000 HRS	76 PCS	0/1
7	High Temperature / High Humidity	85°C / 85% RH	1000 HRS	76 PCS	0/1



Technical Data Sheet

5.0mm Round Type LED Lamps

A1479-1B/UYUYW/S530-A3

Packing Quantity Specification

- 1. 250PCS/1Bog · 4Bag/1Box
- 2. 10Boxes/1Carton

Label Form Specification



CPN: Customer' s Production Number
P/N : Production Number
QTY: Packing Quantity
CAT: Ranks
HUE: Peak Wavelength
REF: Reference
LOT No: Lot Number
MADE IN TAIWAN: Production Place

MADE IN TAIWAN

Notes

- 1. Above specification may be changed without notice. EVERLIGHT will reserve authority on material change for above specification.
- 2. When using this product, please observe the absolute maximum ratings and the instructions for using outlined in these specification sheets. EVERLIGHT assumes no responsibility for any damage resulting from use of the product which does not comply with the absolute maximum ratings and the instructions included in these specification sheets.
- 3. These specification sheets include materials protected under copyright of EVERLIGHT corporation. Please don' t reproduce or cause anyone to reproduce them without EVERLIGHT' s consent.

<i>EVERLIGHT ELECTRONICS CO., LTD.</i>	<i>Tel: 886-2-2267-2000, 2267-9936</i>
<i>Office: No 25, Lane 76, Sec 3, Chung Yang Rd,</i>	<i>Fax: 886-2267-6244, 2267-6189, 2267-6306</i>
<i>Tucheng, Taipei 236, Taiwan, R.O.C</i>	<i>http:\\www.everlight.com</i>