

# LED



## TELEPHONE SLIDE LEDS

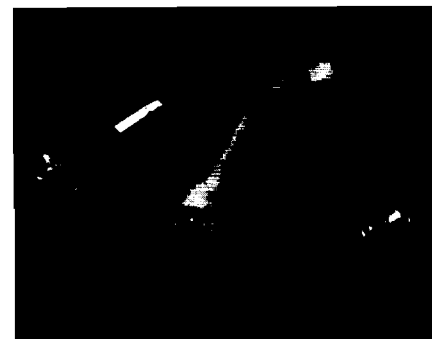
T4.6 / T5.5K / T5.5 T6.8

### FEATURES

#### DIRECTLY REPLACES STANDARD INCANDESCENTS

- 10 YEAR / 100,000 HOURS
- SOLID-STATE - HIGH SHOCK & VIBRATION RESISTANCE
- BUILT-IN CURRENT LIMITING RESISTOR FOR DIRECT AC & DC VOLTAGES. 2V TO 120Vdc / Vac
- HIGH INTENSITY ILLUMINATION
- LOW CURRENT-POWER SAVINGS 100 TO 500% AND MORE...
- IDEAL FOR 2-4 LAMP LIGHTED PUSH-BUTTON SWITCHES, ANNUNCIATORS, RELAMPABLE PANEL INDICATORS
- NVG / SECURE LIGHTING COMPATIBLE
- BURN-IN AVAILABLE
- CHOICE OF 8 COLORS

REPLACES FOLLOWING INCANDESCENTS



PART NO:

**55SB206 CR7 -28V/20-**

MODEL #	LENS/COLOR/BRIGHT	VOLTS/mAmps Typ	POLARITY
<b>MULTICHIP (6-CHIP)</b> 46SB206 55KSB206 55SB206 68SB206	CR3K,CR7,CR6,CO6,CY6, CLY6,CG6,CPG6,CB6,CW6  SPECIALS: CRPG = BICOLOR R/G COPG = BICOLOR O/G	4Vf, 6Vf = EXT. RES. REQ.  5V/60,6V/60,12V/30,14V/30, 24V/20,28V/20,36V/15,48V/15, 60V/12,120VAC/8  Other Voltage/mAmps Available	CENTER CONTACT STD = LEAVE BLOCK BP = BIPOLAR AC = VAC
<b>DUAL CHIP</b> 55KSB202 55SB202 68SB202	CWR3K,CR5,CO5,CY5,CG5, CWG5	4Vf = EXT. RES. REQ.  5V/30,6V/30,12V/30,14V/30, 24V/30,28V/30  Other Voltage/mAmps Available	CENTER CONTACT STD = LEAVE BLOCK BP = BIPOLAR AC = VAC
<b>SINGLE CHIP</b> 46SB200 55KSB200 55SB200 68SB200	CWR5K,CWR3K,CWR1K, CWR900,CR6,CR5,CO5,CY5, CLY5,CG5,CPG5,CB5, CY5,CLY5,CG5,CPG5, TR3K,TR6,TR5,TR900,T05, TY5,TLY5,TC5,TPG5,	2Vf = EXT. RES. REQ.  5V/30,6V/30,12V/30,14V/30, 24V/20,28V/20  Other Voltage/mAmps Available	CENTER CONTACT STD = LEAVE BLOCK BP = BIPOLAR AC = VAC

### SPECIALS:

- FLASHING/BLINKING LEDS
- SUNLIGHT VISIBLE GaAlAs HI-ULTRA REDS
- LOW CURRENT 1mA TO 5mA LEDS FOR BATTERY OPERATION
- BICOLOR LEDS
- INFRARED 850, 880 & 940nm

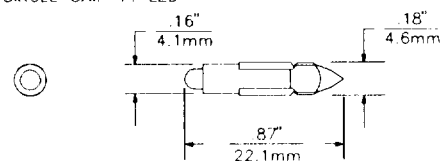
LENS TYPE: C=CLEAR, CW=WATERCLEAR, T= TRANSLUCENT (DIFFUSED)  
 COLOR CODES: R=RED, O=ORANGE, A=AMBER YELLOW, LY=LIME YELLOW, G=GREEN,  
 PG=PURE GREEN, B=BLUE, W=WHITE (RED/GREEN)

BRIGHTNESS CODES: 900=900mcd WIDE RED, 3K=3Kmcd NARROW RED, 5K=5Kmcd NARROW RED,  
 7=HI ULTRA RED ONLY, 6=ULTRA, 5=SUPER BRIGHT, 3/4= HI EFFICIENCY.

NOTE: WHEN PLACING ORDERS OR REQUESTING SAMPLES, PLEASE INDICATE INCANDESCENT LAMP  
 NUMBER BEING REPLACED WHEN SELECTING THE LED COLOR, MATCH EXISTING LENS COLOR TO  
 LED COLOR.

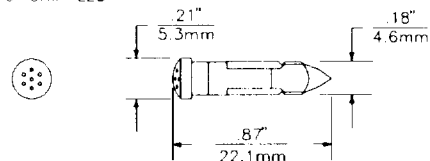
46SB (T4.6)

SINGLE CHIP T1 LED



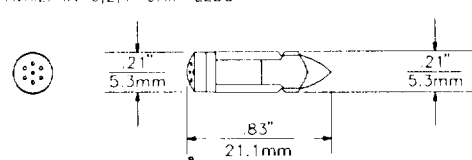
46SB206 (T4.6)

6-CHIP LED



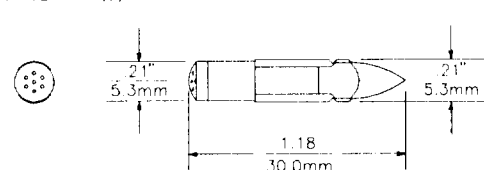
55KSB (T5.5K)

AVAIL. IN 6,2,1-CHIP LEDS



55SB (T5.5)

AVAIL. IN 6,2,1-CHIP LEDS



68SB (T6.8)

AVAIL. IN 6,2,1-CHIP LEDS

