

PLEASE CHECK WWW.MOLEX.COM FOR LATEST PART INFORMATION

Part Number: [0687690027](#)
Status: **Active**
Overview: [ieee 1394](#)
Description: IEEE 1394B Beta 9-pin-to-9pin Cable Assembly, 1.0m (3.28') Length

Documents:

[Drawing \(PDF\)](#) [RoHS Certificate of Compliance \(PDF\)](#)
[Product Specification PS-68769-001 \(PDF\)](#)

General

Product Family	Cable Assemblies
Series	68769
Connector to Connector	IEEE1394b-2002 Both Ends
Overview	ieee 1394
Product Name	IEEE 1394

Physical

Cable Length	1.0m (3.28')
Circuits (Loaded)	9
Color - Resin	Natural
Gender	Male-Male
Lock to Mating Part	Yes
Material - Resin	Low Density Polyethylene
Packaging Type	Bag
Single Ended	No
Wire Insulation Diameter	N/A
Wire Size AWG	N/A
Wire/Cable Type	Round

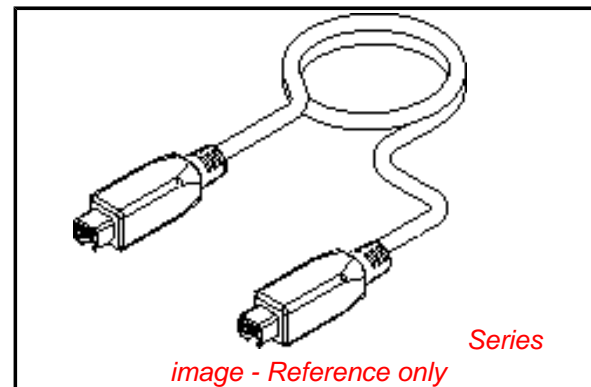
Electrical

Current - Maximum per Contact	1.5A
Impedance	110 ohms
Shielded	Yes
Voltage - Maximum	30V

Material Info

Reference - Drawing Numbers

Product Specification	PS-68769-001
Sales Drawing	SD-68769-027



EU RoHS

**ELV and RoHS
Compliant**
**REACH SVHC
Not Reviewed**
**Halogen-Free
Status**

China RoHS



**Need more information on product
environmental compliance?**

Email productcompliance@molex.com
 For a multiple part number RoHS Certificate of Compliance, [click here](#)

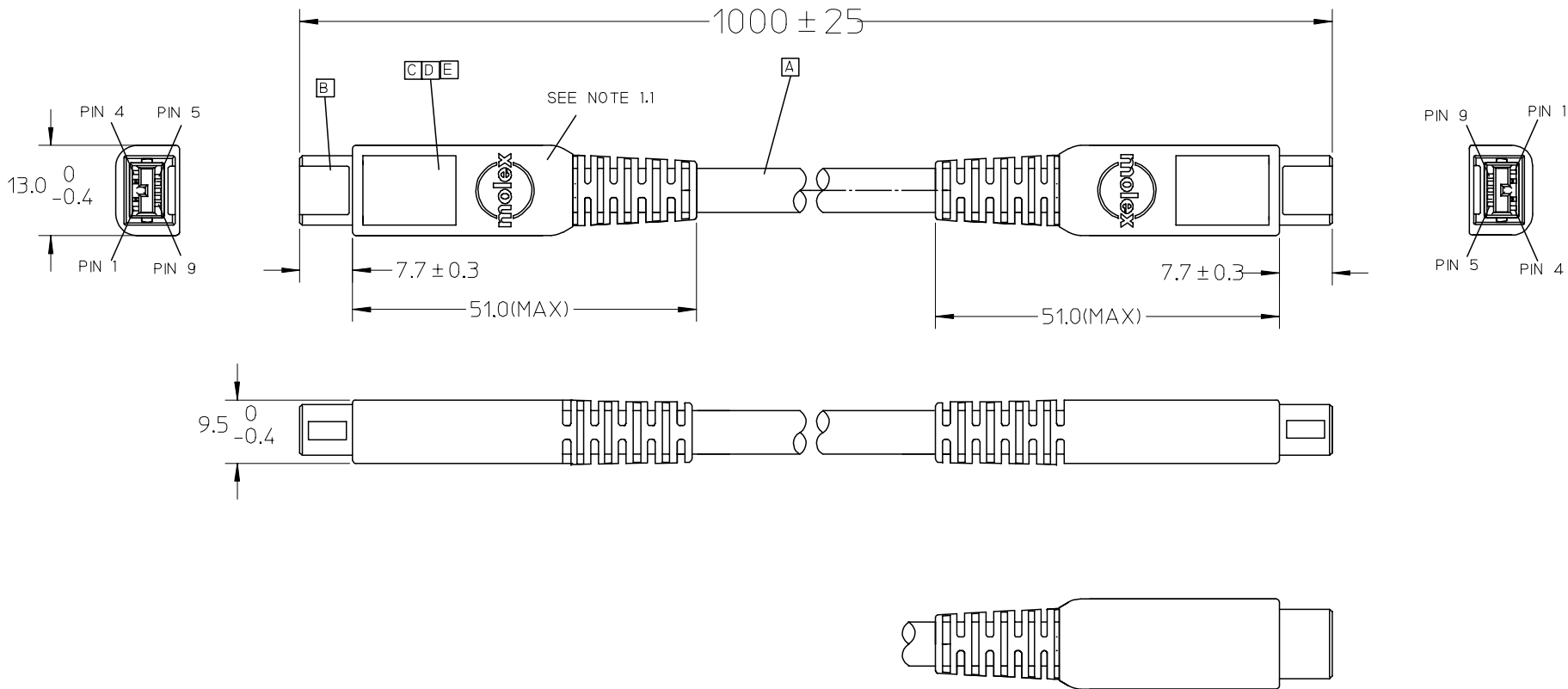
Please visit the [Contact Us](#) section for any non-product compliance questions.

Search Parts in this Series

[68769Series](#)

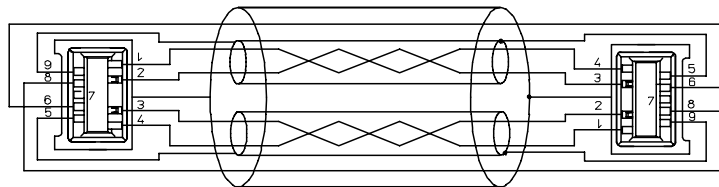
Mates With

[44647](#) IEEE 1394b-2002 Shielded I/O PCB Bilingual Socket



ENTER DESCRIPTION EC NO: DG2006-0086 DRWN: JFZHENG CHKD: APPR: DQLUO 2005/10/15 2005/10/17 2006/08/25	QUALITY SYMBOLS	GENERAL TOLERANCES (UNLESS SPECIFIED)		DIMENSION STYLE MM ONLY		SCALE ---	DESIGN UNITS METRIC	THIRD ANGLE PROJECTION
	$\blacktriangledown = 0$ $\triangle = 0$	mm	INCH	DRAWN BY JFZHENG	DATE 2005/06/20	TITLE 1394B BETA 9P TO 9P 1M GREY CABLE ASS'Y		
		4 PLACES ± ---	± ---	CHECKED BY JFCHENG	DATE 2005/06/20	MOLEX INCORPORATED		
		3 PLACES ± ---	± ---	APPROVED BY DQLUO	DATE 2005/06/20	MATERIAL NO. 687690027	DOCUMENT NO. SD-68769-027	SHEET NO. 1 OF 2
		2 PLACES ± ---	± ---	DRAFT WHERE APPLICABLE MUST REMAIN WITHIN DIMENSIONS				
	1 PLACE ± ---	± ---	SIZE A 4 THIS DRAWING CONTAINS INFORMATION THAT IS PROPRIETARY TO MOLEX INCORPORATED AND SHOULD NOT BE USED WITHOUT WRITTEN PERMISSION					
	ANGULAR ± 1/2°							

WIRING DIAGRAM:



MATERIAL LIST:

E	1394B SOLDER I/O CONN. 172000528		2
D	1394B REAR SHELL,172000530		2
C	1394B FRONT SHELL,172000529		2
B	1394 9PIN BETA PLUG 172000532		2
A	2P*30+2C*26,SHLD,PVC,GY,5,50MM;IEEE1394b,887808510	1M Ref.	1
ITEM	DESCRIPTION	L	QTY.

NOTE:

- OVERMOLD SPECIFICATION
 - 1.1 INNER MOLD WITH PE RESIN 887800008
 - 1.2 OVERMOLD MOLDED WITH GREY PVC RESIN.887800152
- METAL SHELL AND BRAID WIRE SHOULD BE SOLDERED 360 DEG.

PIN OUT TABLE

Plug1: Beta plug contact number	Signal name at plug 1 end;cable as defined in this standard	Plug2: Beta plug contact number
1	TPB*(Twisted pair B Minus) (RED)	3
2	TPB(Twisted pair B Plus) GREEN)	4
3	TPA*(Twisted Pair A minus) (LBUE)	1
4	TPA(Twisted pair A Plus) (ORGANGE)	2
5	TPA(R)(Twisted Par A Ground Rederence)	9
6	VG(Power Ground) (BLACK)	6
7(no connection)	NO connection	7(no connection)
8	Vp(Power Voltage) (WHITE)	8
9	TPB(R)(Twisted Pair B Ground Reference)	5
plug shield	Cable Shield Ground	Plug shield

ENTER DESCRIPTION EC NO: DG2006-0086 DRWN: JFZHENG CHKD: APPR: DQLUO	2005/10/15 2005/10/17 2006/08/25	QUALITY SYMBOLS ▽=0 ▽=0	GENERAL TOLERANCES (UNLESS SPECIFIED)		DIMENSION STYLE	SCALE	DESIGN UNITS	THIRD ANGLE PROJECTION			
					MM ONLY	---	METRIC				
			4 PLACES	± ---	± ---	DRAWN BY	DATE	TITLE			
			3 PLACES	± ---	± ---	JFZHENG	2005/06/20	1394B BETA 9P TO 9P 1M GREY CABLE ASS'Y			
2 PLACES	± ---	± ---	2 PLACES	± ---	± ---	CHECKED BY	DATE				
1 PLACE	± ---	± ---	1 PLACE	± ---	± ---	JFCHENG	2005/06/20				
ANGULAR ±1/2°			APPROVED BY		DATE	MOLEX MOLEX INCORPORATED					
DRAFT WHERE APPLICABLE MUST REMAIN WITHIN DIMENSIONS			MATERIAL NO.		687690027	DOCUMENT NO.		SD-68769-027	SHEET NO.	2 OF 2	
1			SIZE		THIS DRAWING CONTAINS INFORMATION THAT IS PROPRIETARY TO MOLEX INCORPORATED AND SHOULD NOT BE USED WITHOUT WRITTEN PERMISSION						