

PART NAME	NON-METALLIC ENCLOSURE (STYLE B)	PART No.	NBB-10247 & NBB-10267 & NBB-15247 & NBB-22247
-----------	----------------------------------	----------	---

**MATERIAL:**  
UL LISTED INDOOR VERSION  
 SOLID BODY & COVER \_\_\_\_\_ ABS/PC BLENDED PLASTIC  
 UL94-5VB FLAMMABILITY RATING

CLEAR COVER \_\_\_\_\_ POLYCARBONATE PLASTIC  
 UL94V-0 FLAMMABILITY RATING  
 UV STABILIZED

UL LISTED OUTDOOR VERSION  
 SOLID BODY & COVER \_\_\_\_\_ PBT/PC BLENDED PLASTIC  
 UL94-5VA FLAMMABILITY RATING  
 UV STABILIZED

ABS VERSION  
 SOLID BODY & COVER \_\_\_\_\_ ABS  
 UL94-HB FLAMMABILITY RATING

ALL VERSIONS  
 GASKET \_\_\_\_\_ MODIFIED POLYURETHANE

**FINISH:**  
 BODY \_\_\_\_\_ LIGHT GRAY  
 COVER \_\_\_\_\_ LIGHT GRAY OR CLEAR

LATCHES & HINGES \_\_\_\_\_ NON-METALLIC  
 WALL MOUNTING BRACKETS \_\_\_\_\_ STAINLESS STEEL

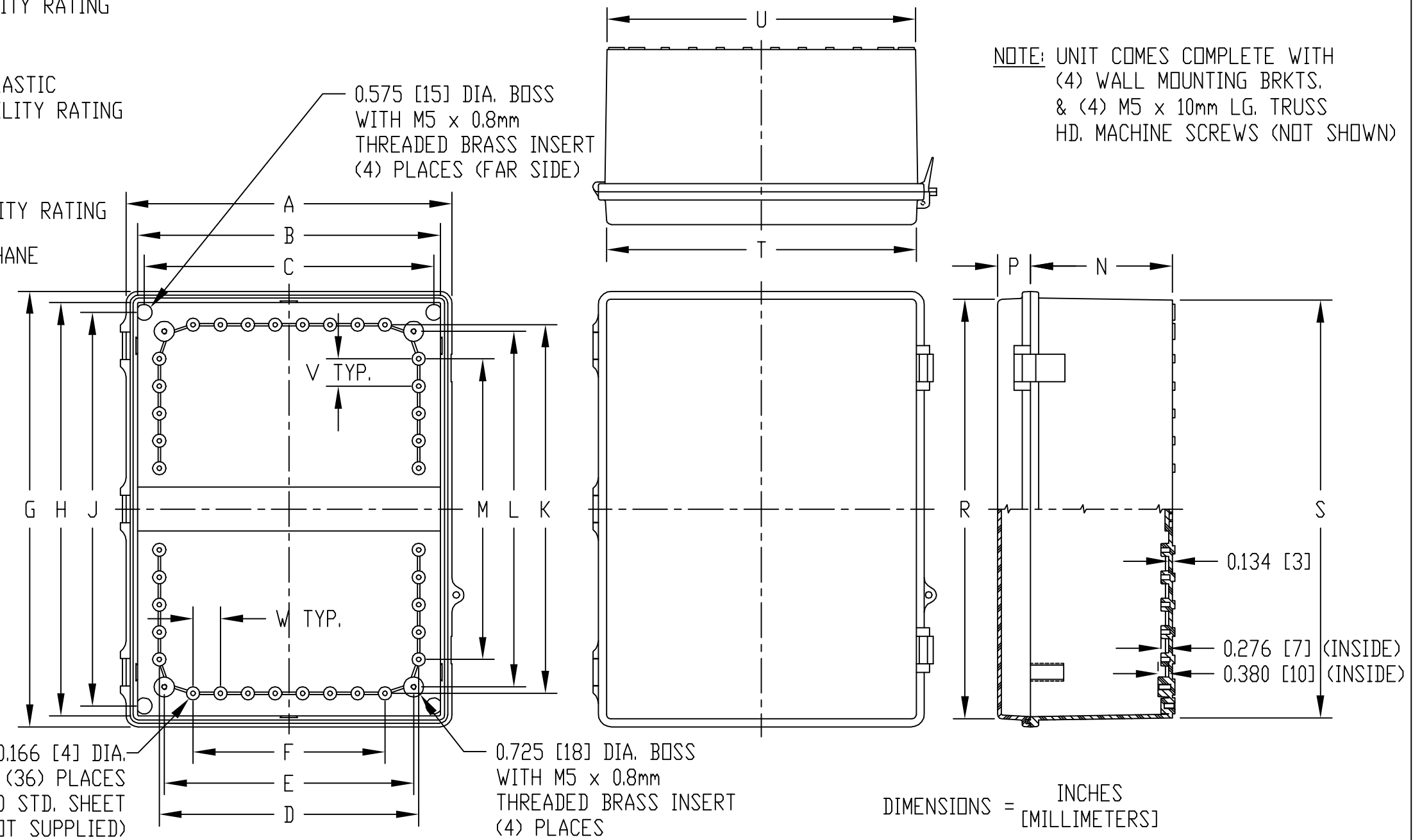
INTERNAL HINGED PANEL MOUNTING BRACKETS, STAINLESS STEEL LOCKING HASP, AIR AND MOISTURE VENTS AND GALVANIZED STEEL INTERNAL PANEL ARE NOT INCLUDED, BUT CAN BE PURCHASED SEPARATELY.

COVER INCLUDES GRAY POLYURETHANE GASKET.

**INDUSTRY STANDARDS:**  
UL LISTED INDOOR VERSION  
 UL508 TYPE 1, 2, 3, 3R, 4, 4X INDOOR, 12 & 13  
 NEMA TYPE 1, 2, 3, 3R, 4, 4X, 12 & 13  
 IEC529-IP65

UL LISTED OUTDOOR VERSION  
 UL508 TYPE 1, 2, 3, 3R, 4, 4X, 12 & 13  
 NEMA TYPE 1, 2, 3, 3R, 4, 4X, 12 & 13  
 IEC529-IP65

ABS VERSION  
 NEMA TYPE 1, 2, 3, 3R, 4, 4X, 12 & 13  
 IEC529-IP65



VIEW LESS COVER

				DIMENSIONS																			
UL LISTED INDOOR VERSION	UL LISTED OUTDOOR VERSION	ABS VERSION		A	B	C	D	E	F	G	H	J	K	L	M	N	P	R	S	T	U	V	W
PART NO.	PART NO.	PART NO.																					
SOLID COVER	CLEAR COVER	SOLID COVER	SOLID COVER																				
NBB-10247	NBB-10267	NBB-15247	NBB-22247	11.727 [298]	10.894 [277]	10.424 [265]	9.335 [237]	8.969 [228]	6.902 [175]	15.680 [398]	14.877 [378]	14.167 [360]	13.265 [337]	12.801 [325]	10.828 [275]	5.110 [130]	1.185 [30]	15.105 [384]	15.035 [382]	11.147 [283]	11.090 [282]	0.986 [25]	0.986 [25]