

PLEASE CHECK WWW.MOLEX.COM FOR LATEST PART INFORMATION

Part Number: [0447690601](#)
Status: **Active**
Overview: [microfit_30](#)
Description: 3.00mm (.118") Pitch Micro-Fit 3.0, BMI™ Receptacle Header, Dual Row, Vertical, with Press-fit Plastic Pegs, 2.54µm (100µ") Tin (Sn), 6 Circuits

Documents:

[3D Model](#) [Product Specification PS-44300-001 \(PDF\)](#)
[Drawing \(PDF\)](#) [RoHS Certificate of Compliance \(PDF\)](#)

Agency Certification

| | |
|-----|-----------|
| CSA | LR19980 |
| TUV | R72081037 |
| UL | E29179 |

General

| | |
|-----------------------------|-------------------------------|
| Product Family | PCB Receptacles |
| Series | 44769 |
| Application | Board-to-Board, Wire-to-Board |
| MolexKits | Yes |
| Overview | microfit_30 |
| Product Literature Order No | USA-106 |
| Product Name | Micro-Fit 3.0 BMI™ |

Physical

| | |
|--------------------------------|-----------------|
| Circuits (Loaded) | 6 |
| Durability (mating cycles max) | 30 |
| Flammability | 94V-0 |
| Glow-Wire Compliant | No |
| Material - Metal | Phosphor Bronze |
| Material - Plating Mating | Tin |
| Material - Plating Termination | Tin |
| Number of Rows | 2 |
| Orientation | Vertical |
| PCB Locator | Yes |
| PCB Retention | Yes |
| PCB Thickness Recommended (in) | 0.062 In |
| PCB Thickness Recommended (mm) | 1.60 mm |
| Packaging Type | Tray |
| Pitch - Mating Interface (in) | 0.118 In |
| Pitch - Mating Interface (mm) | 3.00 mm |
| Plating min: Mating (µin) | 100 |
| Plating min: Mating (µm) | 2.5 |
| Plating min: Termination (µin) | 100 |
| Plating min: Termination (µm) | 2.5 |
| Polarized to PCB | Yes |
| Surface Mount Compatible (SMC) | No |
| Temperature Range - Operating | -40°C to +105°C |
| Termination Interface: Style | Through Hole |

Electrical

| | |
|-------------------------------|------|
| Current - Maximum per Contact | 5A |
| Voltage - Maximum | 250V |

Solder Process Data

| | |
|--|------------------------|
| Duration at Max. Process Temperature (seconds) | 5 |
| Lead-free Process Capability | Wave Capable (TH only) |

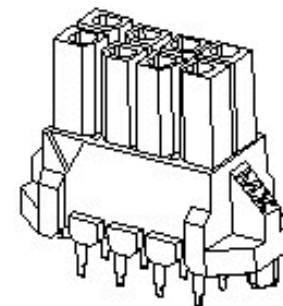


image - Reference only

Series

EU RoHS

ELV and RoHS Compliant

REACH SVHC

Not Reviewed

Halogen-Free

Status

Not Halogen-Free

Need more information on product environmental compliance?

Email productcompliance@molex.com
 For a multiple part number RoHS Certificate of Compliance, [click here](#)

Please visit the [Contact Us](#) section for any non-product compliance questions.

China RoHS



Search Parts in this Series

[44769Series](#)

Mates With

[44428](#) , [44300](#) , [44432](#)

| | |
|---|-----|
| Max. Cycles at Max. Process Temperature | 1 |
| Process Temperature max. C | 260 |

Material Info

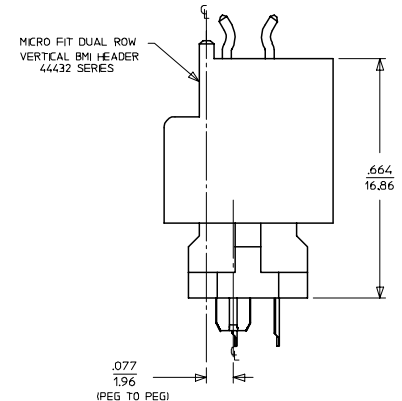
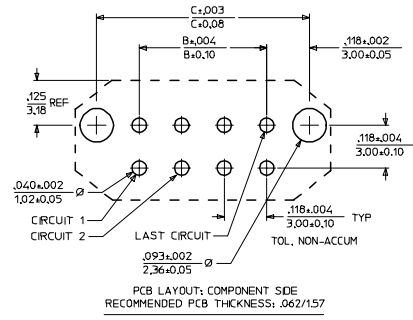
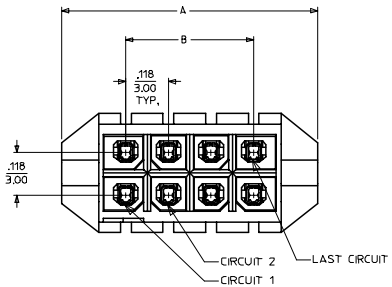
Reference - Drawing Numbers

| | |
|-------------------------|-----------------------------|
| Packaging Specification | PK-44769-001 |
| Product Specification | PS-44300-001, RPS-44300-001 |
| Sales Drawing | SD-44769-001 |

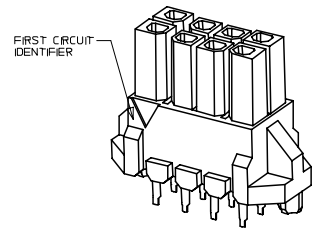
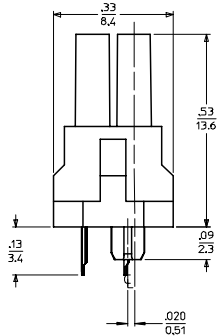
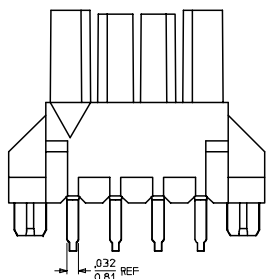
This document was generated on 05/21/2010

PLEASE CHECK WWW.MOLEX.COM FOR LATEST PART INFORMATION

| CIRCUIT SIZE | DIM. "A" | DIM. "B" | DIM. "C" | MATERIAL NUMBER | NUMBER OF POSITIONS | PLATING OPTION |
|--------------|---------------|---------------|---------------|-----------------|---------------------|----------------|
| 4 | .472/(12.00) | .118/(3.00) | .354/(9.00) | 44769-0401 | 04 | A |
| 6 | .591/(15.00) | .236/(6.00) | .472/(12.00) | 44769-0402 | 04 | B |
| 8 | .709/(18.00) | .354/(9.00) | .591/(15.00) | 44769-0403 | 04 | C |
| 10 | .827/(21.00) | .472/(12.00) | .709/(18.00) | 44769-0601 | 06 | A |
| 12 | .945/(24.00) | .591/(15.00) | .827/(21.00) | 44769-0602 | 06 | B |
| 14 | 1.063/(27.00) | .709/(18.00) | .945/(24.00) | 44769-0603 | 06 | C |
| 16 | 1.181/(30.00) | .827/(21.00) | 1.063/(27.00) | 44769-0801 | 08 | A |
| 18 | 1.299/(33.00) | .945/(24.00) | 1.181/(30.00) | 44769-0802 | 08 | B |
| 20 | 1.417/(36.00) | 1.063/(27.00) | 1.299/(33.00) | 44769-0803 | 08 | C |
| 22 | 1.535/(39.00) | 1.181/(30.00) | 1.417/(36.00) | 44769-1001 | 10 | A |
| 24 | 1.654/(42.00) | 1.299/(33.00) | 1.535/(39.00) | 44769-1002 | 10 | B |
| | | | | 44769-1003 | 10 | C |
| | | | | 44769-1201 | 12 | A |
| | | | | 44769-1202 | 12 | B |
| | | | | 44769-1203 | 12 | C |
| | | | | 44769-1401 | 14 | A |
| | | | | 44769-1402 | 14 | B |
| | | | | 44769-1403 | 14 | C |
| | | | | 44769-1601 | 16 | A |
| | | | | 44769-1602 | 16 | B |
| | | | | 44769-1603 | 16 | C |
| | | | | 44769-1801 | 18 | A |
| | | | | 44769-1802 | 18 | B |
| | | | | 44769-1803 | 18 | C |
| | | | | 44769-2001 | 20 | A |
| | | | | 44769-2002 | 20 | B |
| | | | | 44769-2003 | 20 | C |
| | | | | 44769-2201 | 22 | A |
| | | | | 44769-2202 | 22 | B |
| | | | | 44769-2203 | 22 | C |
| | | | | 44769-2401 | 24 | A |
| | | | | 44769-2402 | 24 | B |
| | | | | 44769-2403 | 24 | C |



MATED DIMENSIONS
(FOR ALIGNMENT OF PCB'S IN X & Y DIRECTIONS)



NOTES:
 1. MATERIAL:
 HOUSING: HIGH TEMP. NYLON, GLASS FILLED, UL 94V-0, COLOR - BLACK
 TERMINALS: PHOSPHOR BRONZE ALLOY
 2. FINISH:
 (A) - .000100/0.00254 MIN. TIN OVER
 .000050/0.00127 MIN. NICKEL
 (B) - .000015/0.00039 MIN. SELECTIVE GOLD IN CONTACT AREA,
 .000100/0.00254 MIN. SELECTIVE TIN IN PC TAIL AREA,
 BOTH OVER .000050/0.00127 MIN. NICKEL
 (C) - .000030/0.00076 MIN. SELECTIVE GOLD IN CONTACT AREA,
 .000100/0.00254 MIN. SELECTIVE TIN IN PC TAIL AREA,
 BOTH OVER .000050/0.00127 MIN. NICKEL
 * THE PRIMARY SHIPPING CARTON WILL BE LABELED "COMPLIANT TO"
 RoHS DIRECTIVE 2002/95/EC AND ELV ANNEX I OF DIRECTIVE 2000/53/EC."
 CARTONS WITHOUT THIS LABEL MAY CONTAIN PRODUCT WITH TIN/LEAD
 IN THE PC TAIL AREA.
 3. PRODUCT SPECIFICATIONS: PS-44300-001
 4. PACKAGING SPECIFICATION: PK-44769-001.
 5. MATES WITH MOLEX MICRO-FIT BMI HEADER SERIES 44432, 44428, AND 44300.
 6. MOLEX RECOMMENDS THE USE OF MICRO-FIT TEST PLUG (SERIES 44242) WHENEVER
 CONTINUITY TESTING IS PERFORMED. TEST PLUGS MUST NOT BE USED TO MAKE OR
 BREAK UNDER LOAD. MOLEX DOES NOT RECOMMEND USING STANDARD MATING
 COMPONENTS (SERIES 44432, 44428, OR 44300) FOR TESTING PURPOSES.

| | | | | | | | | |
|---|-----------------------------|--|-----------------------|---------------------------------------|-------------------|--|---|--|
| ADD MATING DIMENSIONS EC NO: UCP2005-2881 DRWN: JLOWE 2005/07/07 CHKD: SSOUSEK 2005/07/13 APPR: ESMITH 2005/07/15 | QUALITY SYMBOLS -0 -0 | GENERAL TOLERANCES (UNLESS SPECIFIED) | | SCALE --- INCH | DESIGN UNITS INCH | THIRD ANGLE PROJECTION REVISE ON CAD ONLY | TITLE MICRO-FIT (3.0) BMI VERT. RECEPTACLE ASS'Y 4 - 24 CIRCUIT | |
| | | mm | INCH | DIMENSION STYLE IN/MM | | | DRAWN BY DATE BURLESON 2000/07/13 | |
| | | 4 PLACES ± --- ± --- | 3 PLACES ± --- ± .010 | CHECKED BY DATE MUELLER 2000/07/13 | | | APPROVED BY DATE EDGLEY 2000/07/13 | |
| | | 2 PLACES ± 0.25 ± .014 | 1 PLACE ± 0.35 ± --- | ANGULAR ±1/2° | | | THIS DRAWING CONTAINS INFORMATION THAT IS PROPRIETARY TO MOLEX INCORPORATED AND SHOULD NOT BE USED WITHOUT WRITTEN PERMISSION | |
| DRAFT WHERE APPLICABLE MUST REMAIN WITHIN DIMENSIONS | | MATERIAL NO. DOCUMENT NO. SHEET NO. SEE CHART SD-44769-001 1 OF 1 | | MOLEX MOLEX INCORPORATED | | MOLEX INCORPORATED | | |