

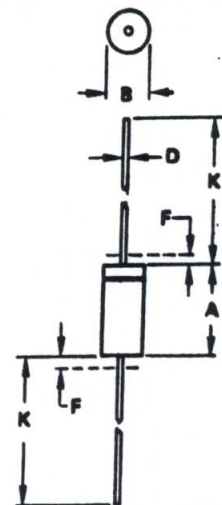
New Jersey Semi-Conductor Products, Inc.

20 STERN AVE.
 SPRINGFIELD, NEW JERSEY 07081
 U.S.A.

TELEPHONE: (973) 376-2922
 (212) 227-6005
 FAX: (973) 376-8960

General Purpose Diodes

Device Type	Case	Av. Rect. Current mA	Working Voltage V	Max. Forward Voltage		Leakage Current	
				V @ IF	nA @ VR		
IS920	DO-35	200	50	1.2	200mA	100	50V
IS921	DO-35	200	100	1.2	200mA	100	100V
IS922	DO-35	200	150	1.2	200mA	100	150V
IS923	DO-35	200	200	1.2	200mA	100	200V
IS924	DO-35	200	300	1.2	200mA	100	300V
IS940	DO-35	50	30	1.5	50mA	5 μ A	30V
IS941	DO-35	50	50	1.5	50mA	5 μ A	50V
IS942	DO-35	50	75	1.5	50mA	5 μ A	75V
OA200	DO-7	160	50	1.15	30mA	100	50V
OA202	DO-7	160	150	1.15	30mA	100	150V
BA155	DO-35	100	150	1.5	50mA	2.5 μ A	150V
BA180	DO-35	50	10	1	4mA	—	—
BA181	DO-35	50	20	1	4mA	5 μ A	10V
IS120	DO-7	200	50	1	200mA	100	50V
IS121	DO-7	200	150	1	200mA	100	150V
IS130	DO-7	200	50	1	200mA	1 μ A	50V
IS134	DO-7	200	400	1	200mA	1 μ A	400V
IS111	DO-7	400	225	1	400mA	200	225V
IS113	DO-7	400	400	1	400mA	200	400V
IS131	DO-7	300	100	1	300mA	1 μ A	100V
IS132	DO-7	300	200	1	300mA	1 μ A	200V
IN645	DO-7	400	225	1	400mA	200	225V
IN646	DO-7	400	300	1	400mA	200	300V
IN645/A	DO-7	400	225	1	400mA	50	60V
IN647	DO-7	400	400	1	400mA	200	400V
BY401	DO-7	500	50	1.1	500mA	500	50V
BY402	DO-7	500	100	1.1	500mA	500	100V
BY403	DO-7	500	200	1.1	500mA	500	200V
BY404	DO-7	500	400	1.1	500mA	500	400V



DIM	MILLIMETERS		INCHES	
	MIN	MAX	MIN	MAX
A	3.05	5.08	0.120	0.200
B	1.52	2.29	0.060	0.090
D	0.48	0.56	0.018	0.022
F	—	1.27	—	0.050
K	25.40	38.10	1.000	1.500

All JEDEC dimensions and notes apply.

NOTES:

1. PACKAGE CONTOUR OPTIONAL WITHIN A AND B. HEAT SLUGS, IF ANY, SHALL BE INCLUDED WITHIN THIS CYLINDER, BUT NOT SUBJECT TO THE MINIMUM LIMIT OF B.
2. LEAD DIAMETER NOT CONTROLLED IN ZONE F TO ALLOW FOR FLASH, LEAD FINISH BUILDUP AND MINOR IRREGULARITIES OTHER THAN HEAT SLUGS.
3. POLARITY DENOTED BY CATHODE BAND.



(DO-35)